

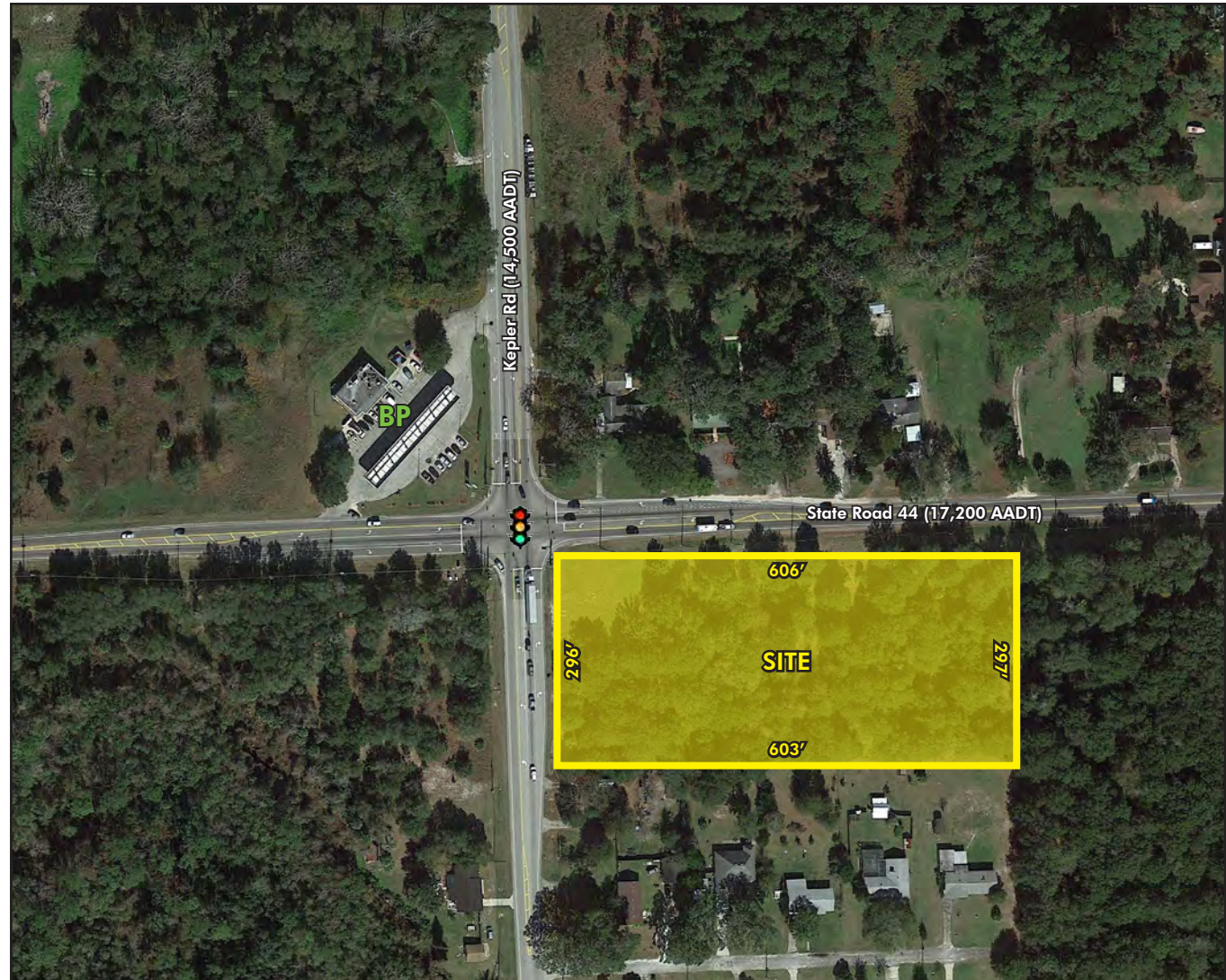
NOW
AVAILABLE

LAND FOR SALE

SEC STATE ROAD 44 & KEPLER ROAD, DELAND, FLORIDA

Retail 24/7.

- Price: \$795,000
- Property Size: 4.12± Acres
- Dimensions: 606' W x 297' D
- Zoning: BPUD (Business Planned Commercial)
- Hard Corner Signalized Intersection
- Traffic Counts:
State Road 44: 17,200 AADT
Kepler Rd: 14,500 AADT
- Far Corner of the Traffic Signal
- Main Thoroughfare in Deland for I-4 Access



FOR MORE
INFORMATION
PLEASE
CONTACT

James Mitchell

Senior Vice President

+1 407 404 5024

james.mitchell@cbre.com

CBRE, Inc. | Licensed Real Estate Broker

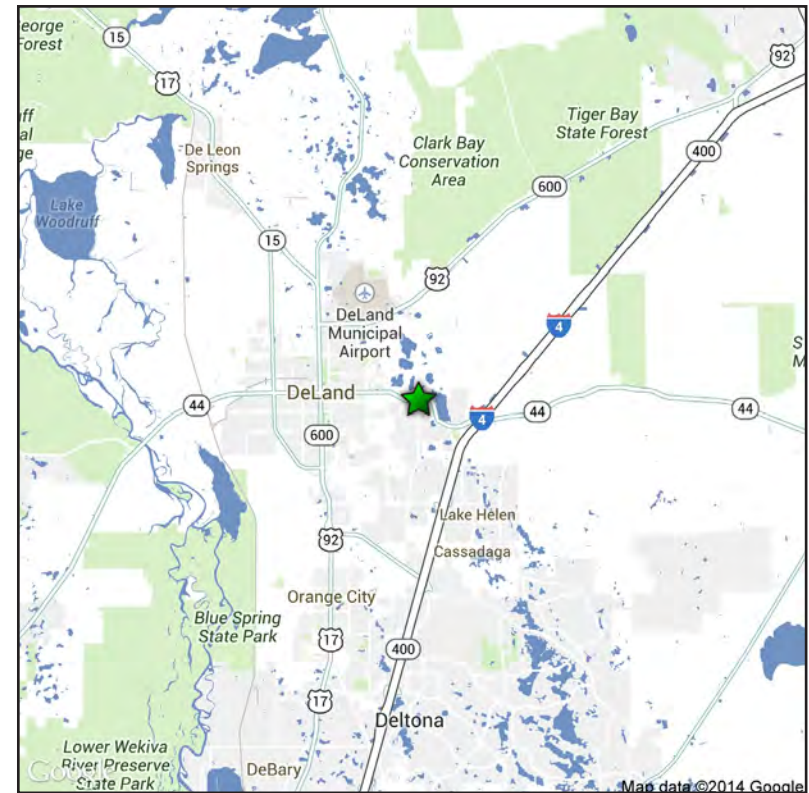
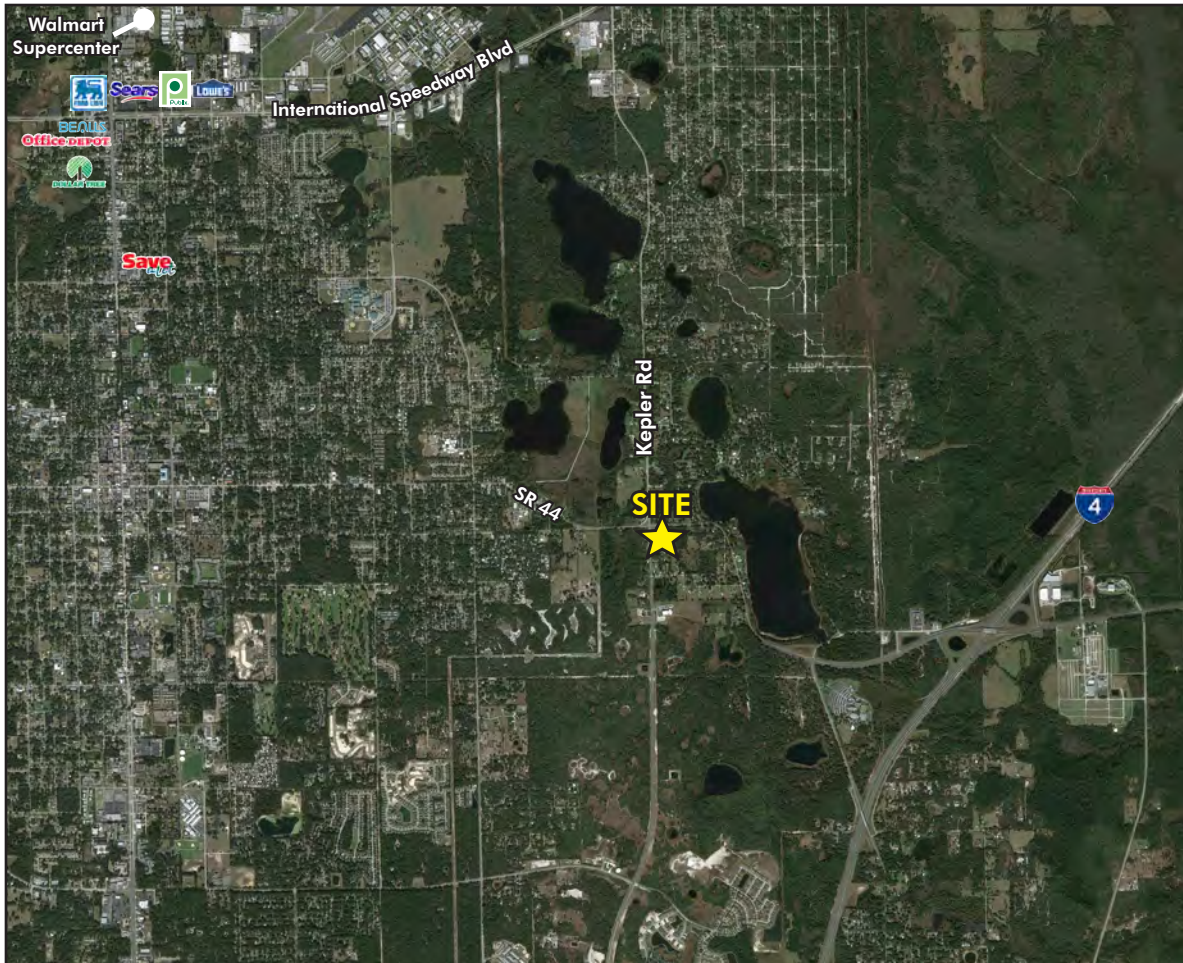
CBRE

NOW
AVAILABLE

LAND FOR SALE

SEC STATE ROAD 44 & KEPLER ROAD, DELAND, FLORIDA

Retail 24/7.



FOR MORE
INFORMATION
PLEASE
CONTACT

James Mitchell

Senior Vice President

+1 407 404 5024

james.mitchell@cbre.com

CBRE, Inc. | Licensed Real Estate Broker

200 S. Orange Avenue | Suite 2100 | Orlando, FL 32801 | www.cbre.com/orlando

| 2014 Estimated Demographics | 1 mile | 3 miles | 5 miles |
|-----------------------------|----------|----------|----------|
| POPULATION | 1,629 | 27,296 | 56,472 |
| HOUSEHOLDS | 696 | 10,619 | 22,155 |
| 2010-2014 GROWTH | 3.43% | 2.42% | 2.52% |
| MEDIAN HOUSEHOLD INCOME | \$42,521 | \$36,081 | \$38,180 |
| AVERAGE HOUSEHOLD INCOME | \$56,590 | \$49,008 | \$49,969 |

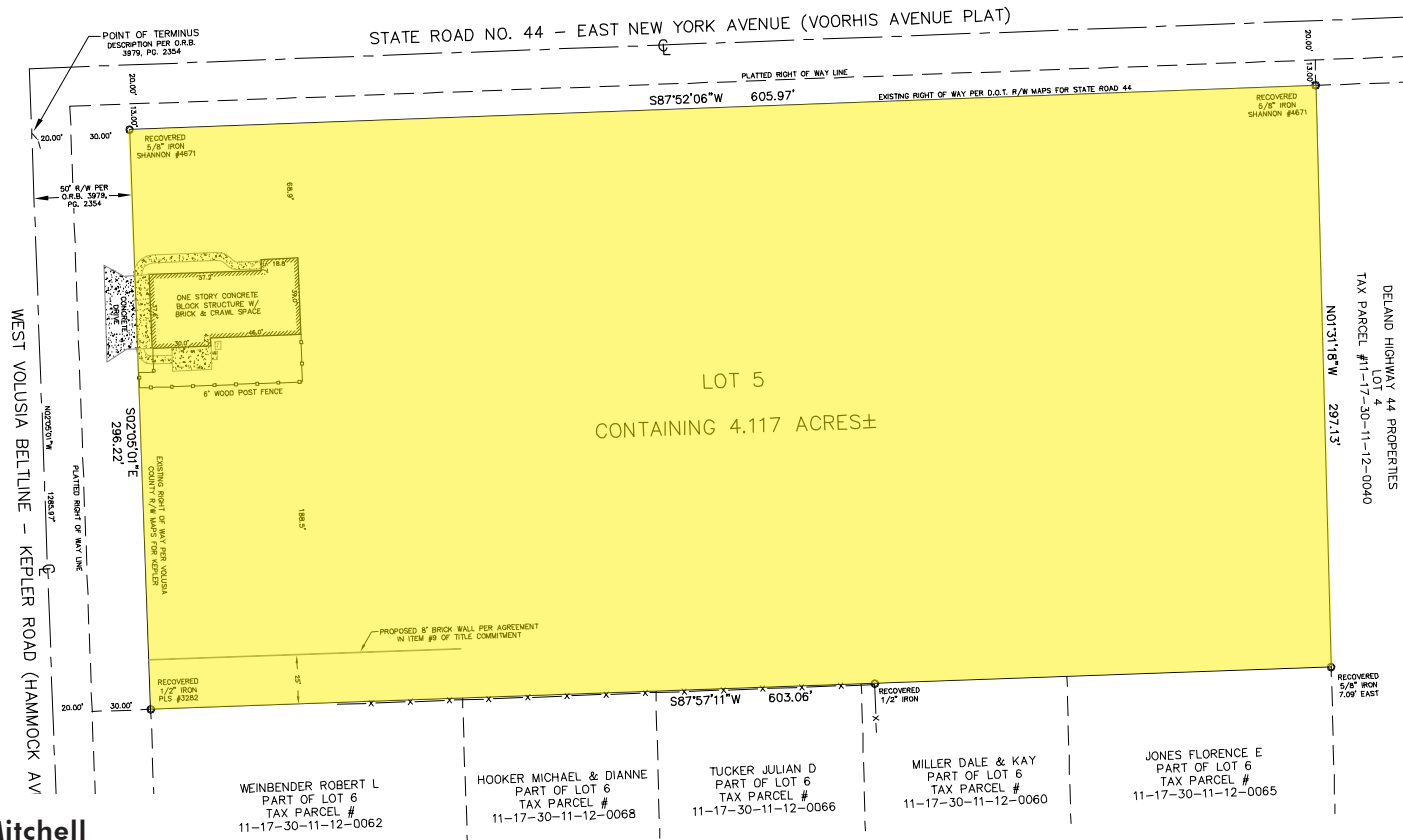


NOW
AVAILABLE

LAND FOR SALE

SEC STATE ROAD 44 & KEPLER ROAD, DELAND, FLORIDA

Retail 24/7.



FOR MORE
INFORMATION
PLEASE
CONTACT

James Mitchell

Senior Vice President

+1 407 404 5024

james.mitchell@cbre.com

CBRE, Inc. | Licensed Real Estate Broker

200 S. Orange Avenue | Suite 2100 | Orlando, FL 32801 | www.cbre.com/orlando

© 2014 CBRE, Inc. This information has been obtained from sources believed reliable. We have not verified it and make no guarantee, warranty or representation about it. Any projections, opinions, assumptions or estimates used are for example only and do not represent the current or future performance of the property. You and your advisors should conduct a careful, independent investigation of the property to determine to your satisfaction the suitability of the property for your needs.

CBRE and the CBRE logo are service marks of CBRE, Inc. and/or its affiliated or related companies in the United States and other countries. All other marks displayed on this document are the property of their respective owners.

CBRE