

2048 NORTH HALSTED STREET

lincoln park / chicago, il

AVAILABLE NOW



MID AMERICA® URBAN

2048 NORTH HALSTED STREET

lincoln park / chicago, il

ADDRESS

2048 North Halsted Street
Southeast Corner of West Dickens Avenue and
North Halsted Street

AVAILABILITY

2,909 SF – Street Level
624 SF – Mezzanine Level
3,533 SF – Total

DEMOGRAPHICS

	.5M	1M	1.5M
AVG HOUSEHOLD INCOME –	\$166,885	\$141,431	\$134,473
POPULATION –	18,164	66,593	140,911
DAYTIME POPULATION –	13,331	50,205	111,609

CO-TENANTS

Lululemon Athletica, Bluemercury, MAC,
Warby Parker, Benefit, BCBG, Club Monaco,
Francesca's, Marine Layer, Bonobos

FEATURES

Halsted & Armitage Boutique Shopping District
Single tenant building
Great presence and visibility on Halsted Street
Situated amongst high volume restaurants Oyster Bah,
Summer House, Café Ba-Ba-Reeba, Athenian Room,
and Pasta Palazzo

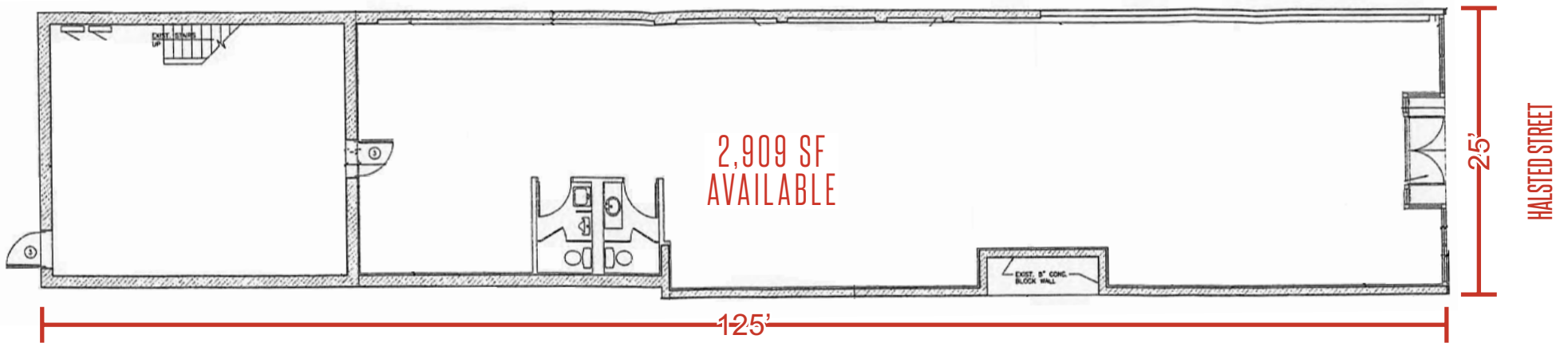
SPACE DETAILS



2048 NORTH HALSTED STREET

lincoln park / chicago, il

FLOOR PLAN



SPACE DETAILS

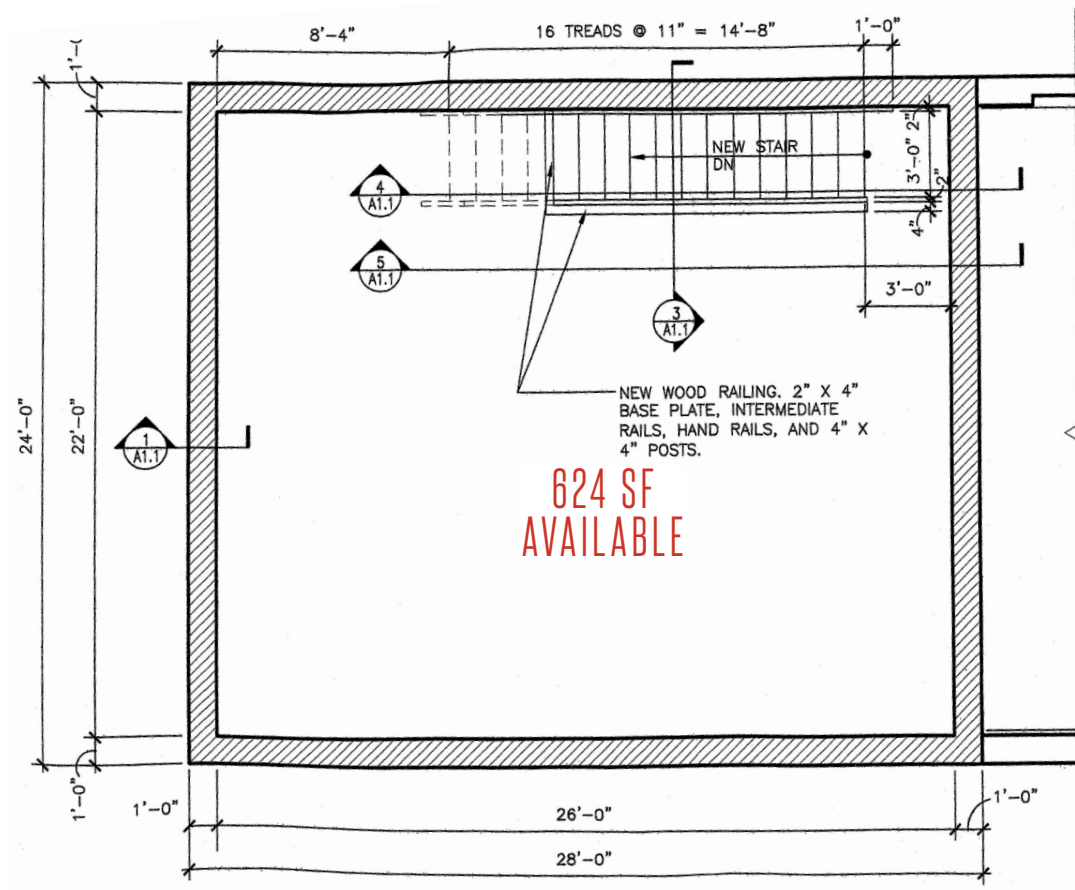
2,909 SF – First Floor



2048 NORTH HALSTED STREET

lincoln park / chicago, il

FLOOR PLAN



SPACE DETAILS

624 SF – Mezzanine





let's talk. **BIG IDEAS?**

GREG BAYER
Mid-America Real Estate Corp.
630.954.7441
GBayer@MidAmericaGrp.com

JOHN BASSI
Mid-America Real Estate Corp.
630.481.4037
JBassi@MidAmericaGrp.com

 **MID-AMERICA[®] URBAN**

