



408 GREENWICH STREET

NORTHWEST CORNER OF HUBERT & GREENWICH

Ground Floor: **1,300 SF** | 2nd Floor: **4,700 RSF** | Cellar Storage: **507 SF**
Frontage: **39' (Greenwich), 26' (Hubert), 135' (Second Floor)**
Term: **Negotiable** | Possession: **January 1, 2019** | Asking Rent: **Please Inquire**





GROUND FLOOR

FLOORS MAY
BE LEASED
SEPARATELY
2ND FLOOR
IS AVAILABLE
FOR SALE

NEIGHBORING RETAILERS

- Sweetgreen
- Citigroup HQ
- Flywheel
- Juice Press
- DigInn
- Wisefish Poke
- Sushi Azabu
- Wichcraft
- The Greenwich Hotel
- Wolfgang's Steakhouse
- The Greek
- Yoga Vida
- Verve Wine Store
- Yves

FEATURES

- Unique corner duplex retail with a commanding presence overlooking Citigroup's Global HQ
- New construction designed by Morris Adjmi
- 65' of wraparound ground floor frontage with an architecturally significant staircase connecting to the entire second floor
- Absolute turnkey condition
- Terrific pedestrian traffic
- Light food users and cafes considered



SECOND FLOOR



SECOND FLOOR



GROUND FLOOR



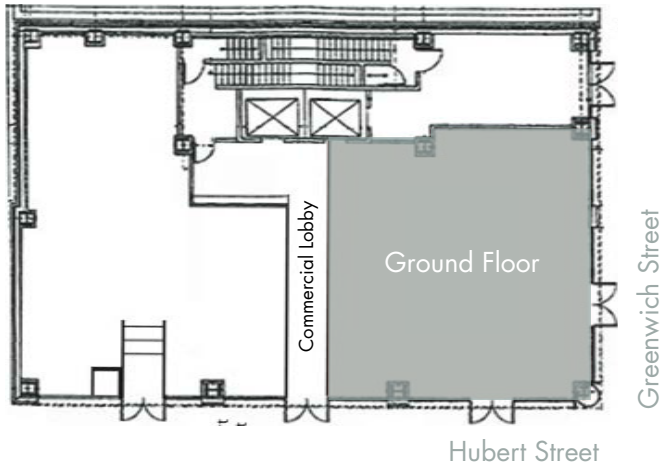
Christopher Owles
212.604.9002
chris@sinvin.com

Randy Kornblatt
646.673.8772
randy@sinvin.com

SINVIN
COMMERCIAL REAL ESTATE & ADVISORY



GROUND FLOOR



408 GREENWICH STREET

NORTHWEST CORNER OF HUBERT & GREENWICH

