

OFFICE SPACE
FOR LEASE



marina heights

310 E Rio Salado Parkway &
600 E Rio Salado Parkway, Suite 102, Tempe

 **TRANSWESTERN[®]**



DOWNTOWN TEMPE

ASU Voted #1 in Innovation

64 Restaurants within
3 miles



\$2 BILLION +
Capital Investment

QUALITY OF LIFE

Thousands of
Recreational
Activities Available



1,783 Acres of City Parks
6 Dog Parks



52 3-5 Star Hotels within
5 mile radius

737,233 Annual Public
Library Visitors



20 Museums

marina heights

**OFFICE SPACE
FOR LEASE**

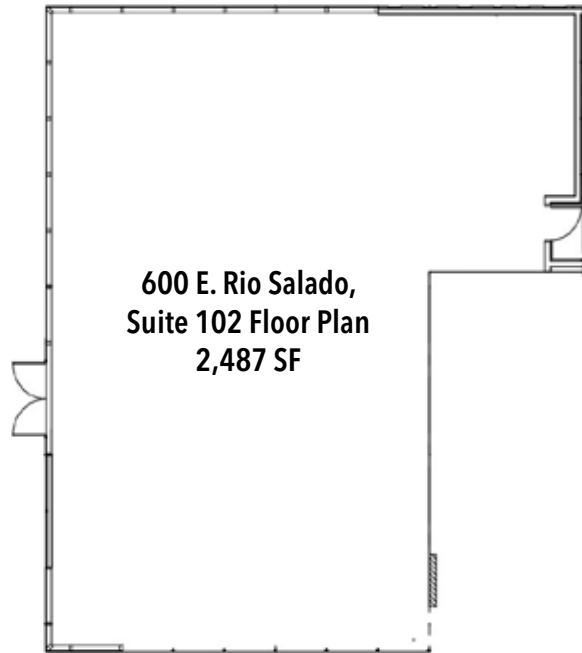


In the heart of the most sought-after corporate campus in the SW region

As part of the world-class, ±43 acre waterfront development along the south shore of Tempe Town Lake, Marina Heights is the finest office campus in Arizona. With a vast array of walkable office amenities, transportation, education, residential, and hospitality, Marina Heights provides tenants with an unparalleled work environment and recruitment advantage.

Amongst the open space and art features, retail amenities include Matt's Big Breakfast, Starbucks Coffee, Cafe 450, Honor Health wellness/medical clinic, and Mountainside Fitness, all overlooking Tempe Town Lake.

Lake Front Views



600 E. Rio Salado,
Suite 102 Floor Plan
2,487 SF

On Site Amenities



cafe 450
CATERING



HONORHEALTH



310 E. Rio Salado Conceptual Floor Plan – 6,700 SF

*“...meticulously
manicured grounds,
art and professional
amenities.”*



600 E Rio Salado Parkway
Suite 120 - 2,487 SF

310 E Rio Salado Parkway
6,700 SF



LEASING INFORMATION

Bill Zurek
Senior Vice President
602.954.9856
william.zurek@transwestern.com

Jim Achen, Jr.
Senior Vice President
602.954.9850
jim.achen@transwestern.com

Brian Zurek
Associate
602.386.1185
brian.zurek@transwestern.com



marina heights



2415 East Camelback Road, Suite 900
Phoenix, Arizona 85016

T 602.956.5000 F 602.956.5333
www.transwestern.com/phoenix