

6427

WESTWOOD BOULEVARD

ORLANDO, FL 32821

**AVISON
YOUNG**

WESTWOOD CENTER



**RETAIL SPACE
FOR LEASE**

**4,000 SF
FULLY EQUIPPED
RESTAURANT SPACE**

Lisa Bailey, SIOR, Principal
D 407.440.6641
M 407.595.9233
lisa.bailey@avisonyoung.com

Emily Zinaich, Senior Vice President
D 407.440.6641
M 407.230.8797
emily.zinaich@avisonyoung.com

This 2-story, 13,300 sf Class A property features a **4,000 sf fully equipped restaurant space with enclosed patio seating**. It is ideally located in the heart of the Tourist Corridor, less than one mile from **Sea World** and the **Orange County Convention Center** and offers excellent access to the Beachline Expressway (SR 528) and Interstate 4 (I-4).

**CANADA BEST
MANAGED
COMPANIES**

Platinum
member

WESTWOOD CENTER

6427 Westwood Boulevard
Orlando, FL 32821

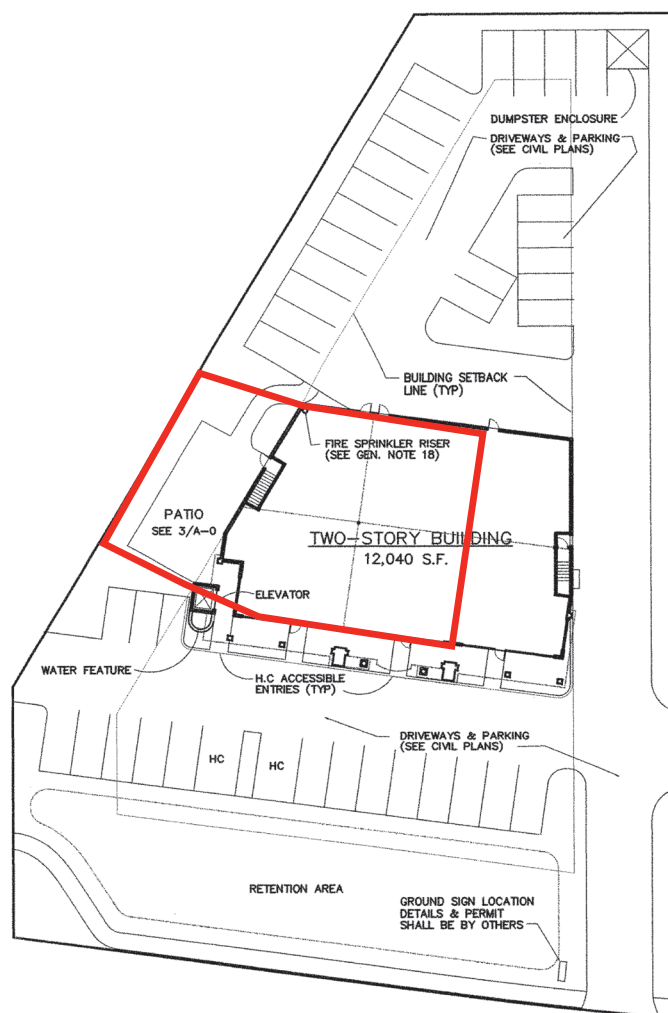
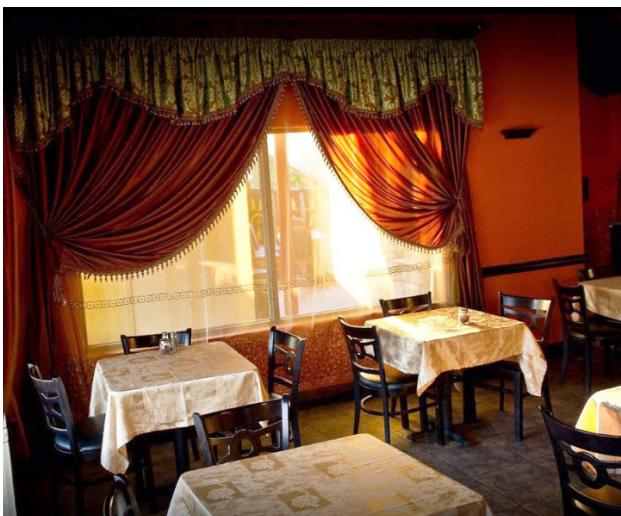


Building Features

- > 13,300 sf on 1 acre
- > Elevator accessible
- > Building and monument signage available
- > Ample parking
- > 3-phase power
- > Masonry construction
- > Zoned P-D

Restaurant Space

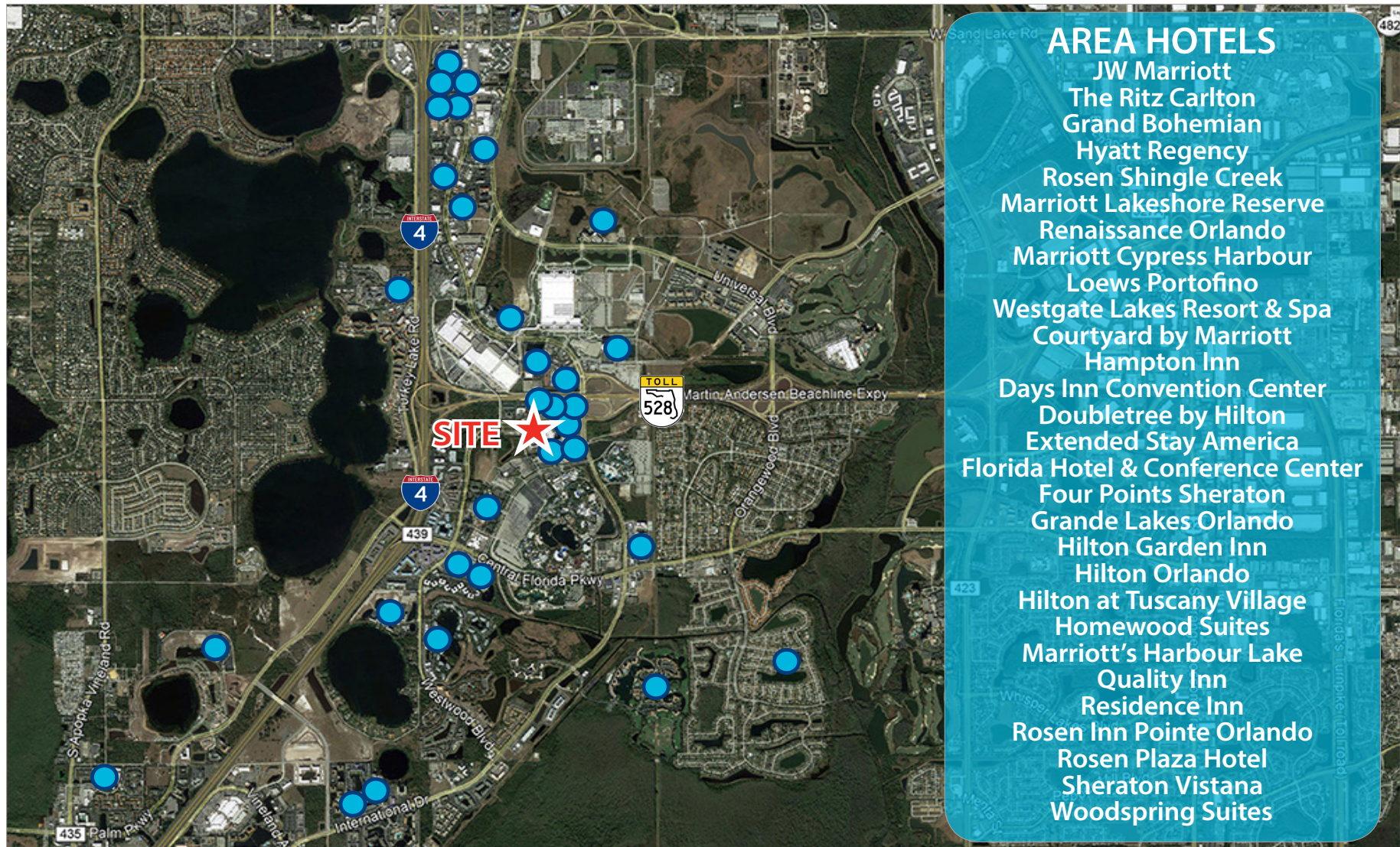
- > 4,000 sf of restaurant space seats 400 people
- > Patio seating
- > Full kitchen with grease trap and gas in place
- > Liquor, health, and fire department licenses available
- > All essential restaurant items (tables, chairs, plates) obtainable



WESTWOOD CENTER

6427 Westwood Boulevard
Orlando, FL 32821

AVISON
YOUNG



WESTWOOD CENTER

6427 Westwood Boulevard
Orlando, FL 32821



Lisa Bailey, SIOR, Principal
D 407.440.6645 | M 407.595.9233
lisa.bailey@avisonyoung.com

Emily Zinaich, Senior Vice President
D 407.440.6641 | M 407.230.8797
emily.zinaich@avisonyoung.com

Avison Young
135 W. Central Boulevard
Suite 700
Orlando, FL 32801

www.avisonyoung.com

Demographics	1 Mile	3 Mile	5 Mile
Population	2,299	39,200	135,229
Average HH Income	\$46,939	\$89,677	\$78,778
Daytime Population	1,186	14,830	48,400
2017 Annual Visitors to Orlando	68 million		
Yearly Conventions Held at Orange County Convention Center (average)	230		