

FOR LEASE

23,991 SF

351-355

HASTINGS DRIVE

Buffalo Grove, IL



MOLTO
PROPERTIES

www.cbre.com

CBRE

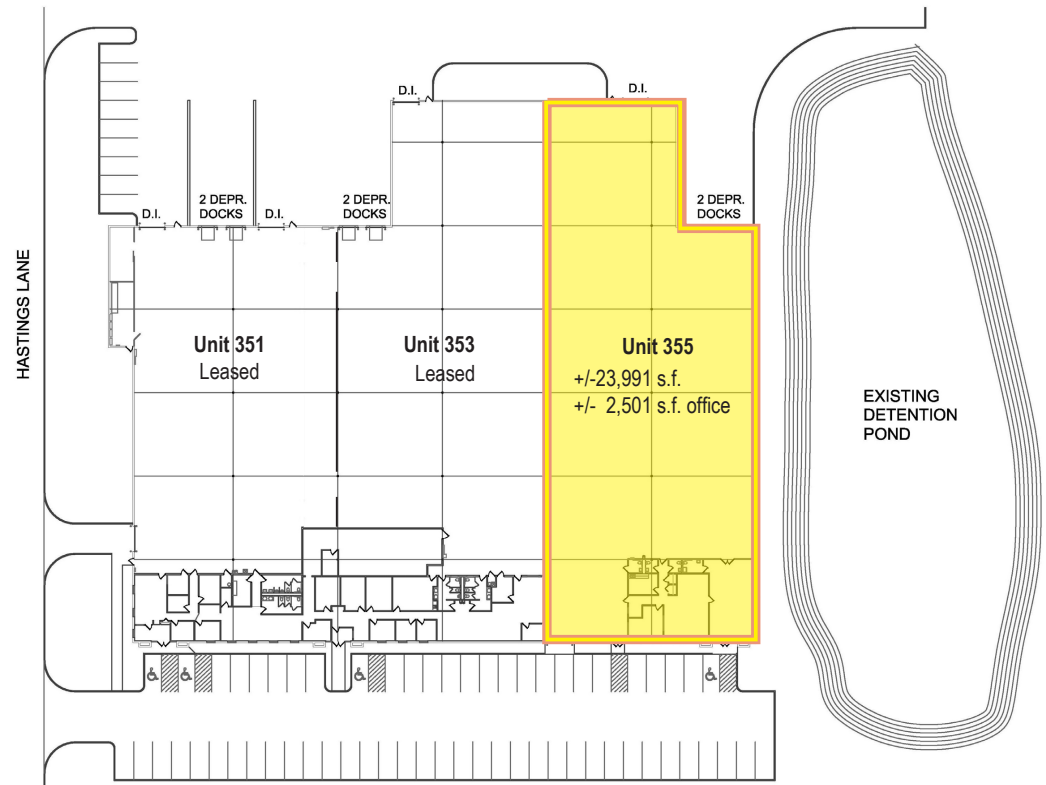
FOR LEASE
23,991 SF

**351-355
 HASTINGS DRIVE**
 Buffalo Grove, IL



BUILDING SPECIFICATIONS

Available:	23,991 SF
Office:	2,501 SF
Total Building:	68,735 SF
Clear Height:	24'
Site Size:	4.36 Acres
Year Built:	1998
Parking:	22 cars
Power:	400 Amps @ 120/208 V 3 Phase 4 Wire
Loading:	2 Exterior Docks 2 Drive-In Doors
Real Estate Taxes:	\$1.53 PSF (2016)
Operating Expenses:	\$0.68 PSF (2016)
Lease Rate:	\$5.75 PSF



©2017 CBRE, Inc. CBRE and the CBRE logo are service marks of CBRE, Inc. and/or its affiliated or related companies in the United States and other countries. We obtained the information herein from sources we believe to be reliable. However, we have not verified its accuracy and make no guarantee, warranty or representation about it. It is submitted subject to the possibility of errors, omissions, change of price, rental or other conditions, prior sale, lease or financing, or withdrawal without notice. We include projections, opinions, assumptions or estimates for example only, and they may not represent current or future performance of the property. You and your tax and legal advisors should conduct your own investigation of the property and transaction. Photos herein are the property of their respective owners and use of these images without the express written consent of the owner is prohibited.



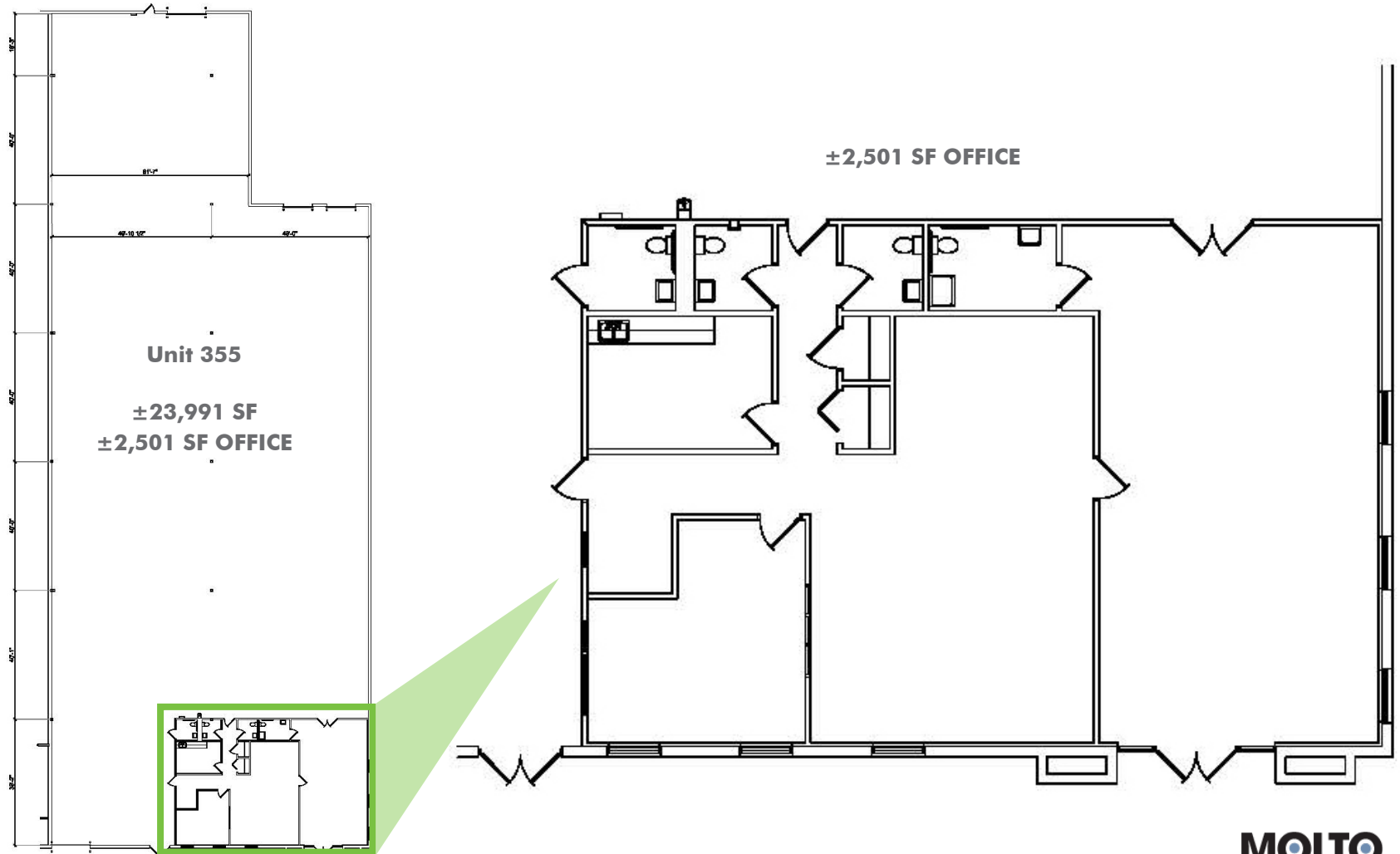
www.cbre.com

CBRE

FOR LEASE
23,991 SF

351-355
HASTINGS DRIVE
Buffalo Grove, IL

 **OFFICE PLAN**



MOLTO
PROPERTIES

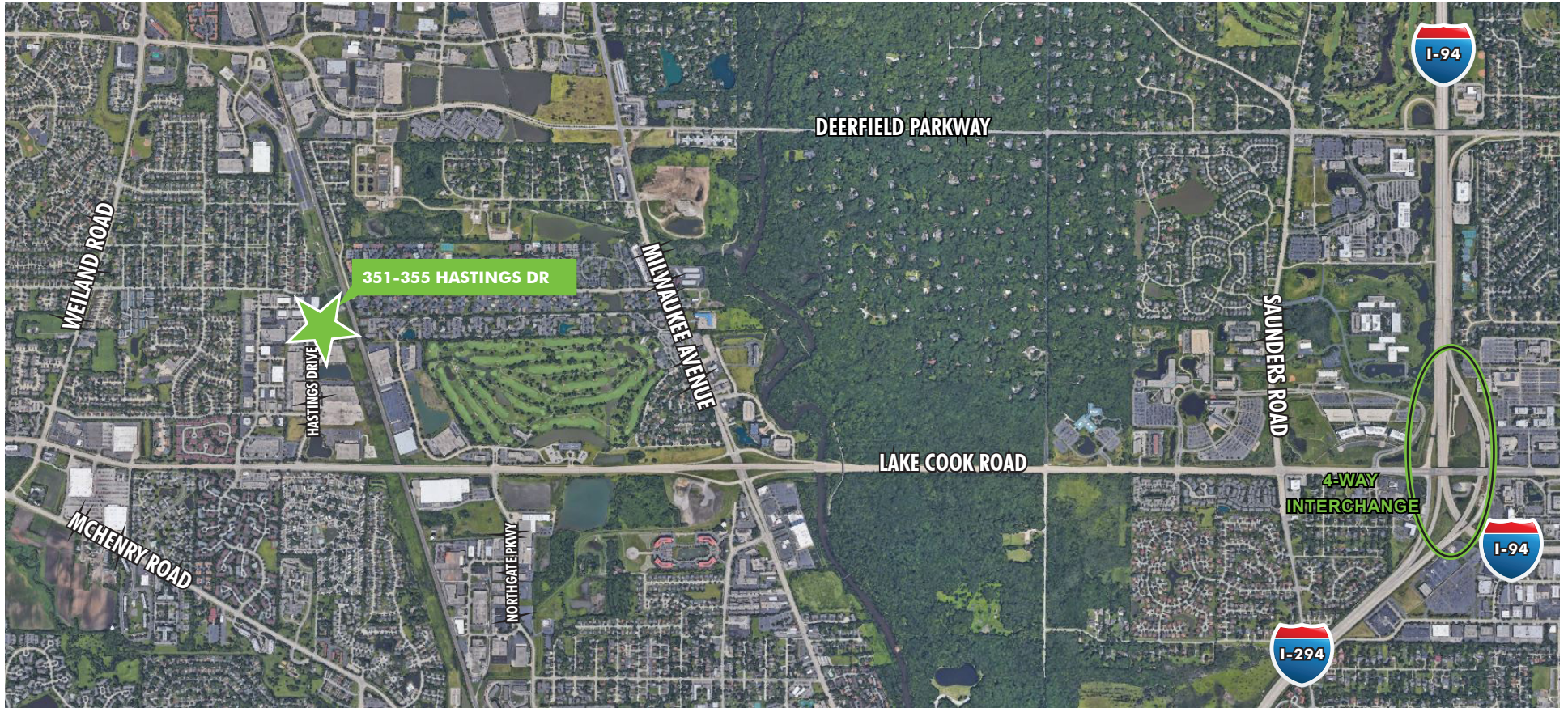
www.cbre.com

CBRE

FOR LEASE
23,991 SF

**351-355
HASTINGS DRIVE**
Buffalo Grove, IL

 **LOCATION MAP**



MOLTO
PROPERTIES

www.cbre.com

CBRE

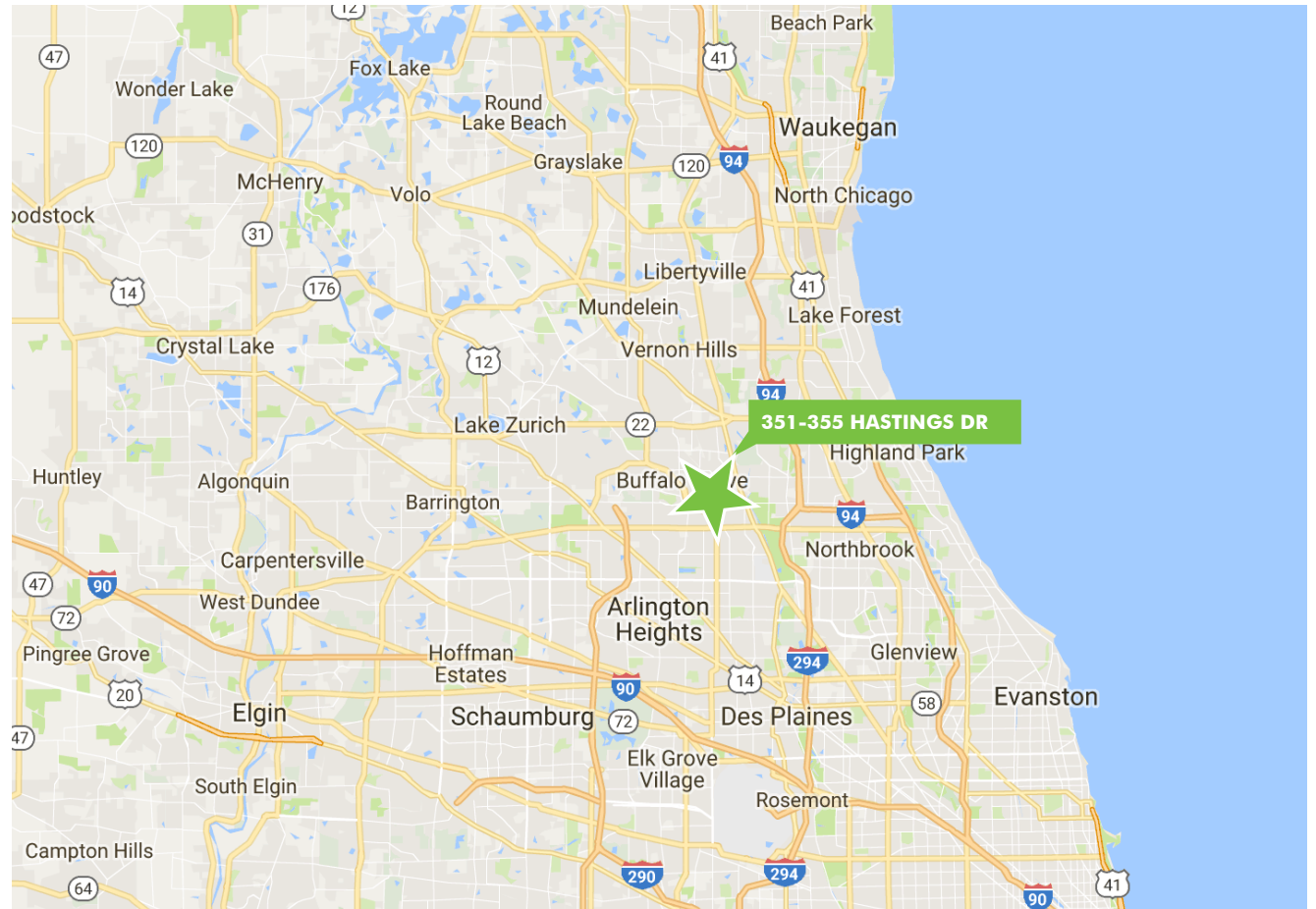
FOR LEASE
23,991 SF

**351-355
HASTINGS DRIVE**
Buffalo Grove, IL



BUILDING FEATURES

- + Easy access to I-294 via Lake Cook Road
- + Premier Business Park setting
- + Drive-through capability
- + Low Lake County taxes



CONTACT US

WHIT R. HEITMAN

Senior Vice President
+1 847 624 4947
whit.heitman@cbre.com

SAM BADGER, SIOR

Senior Vice President
+1 847 310 2099
sam.badger@cbre.com

BRAD WEINER

First Vice President
+1 630 956 3650
brad.weiner@cbre.com

JARED PAFF

Vice President
+1 847 274 1444
jared.paff@cbre.com



www.cbre.com

CBRE