

# CROWN

ENTERPRISES INC

## FOR LEASE - FUEL STATION WITH CONVENIENT STORE

5000 WYOMING, DEARBORN MICHIGAN

**LEASE INCENTIVES AVAILABLE IMMEDIATELY**



- 1,650 sq. ft. Convenient Store
- 1,750 sq. ft. Fuel Lanes
- Four Fuel Pumps
- Four Fuel Lanes
- 24 hour Secure Facility
- FedEx / UPS drop off

### TRAFFIC COUNTS

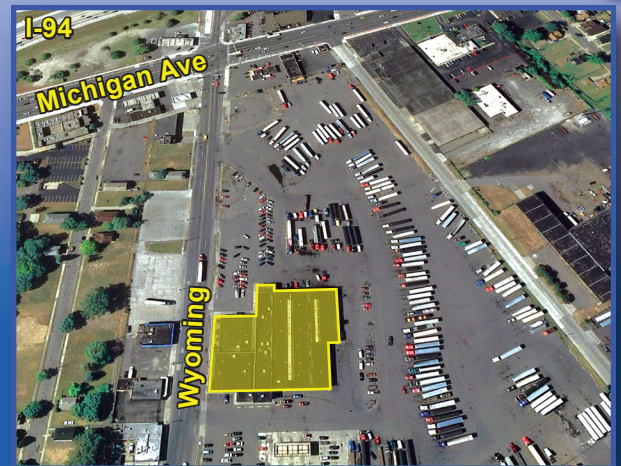
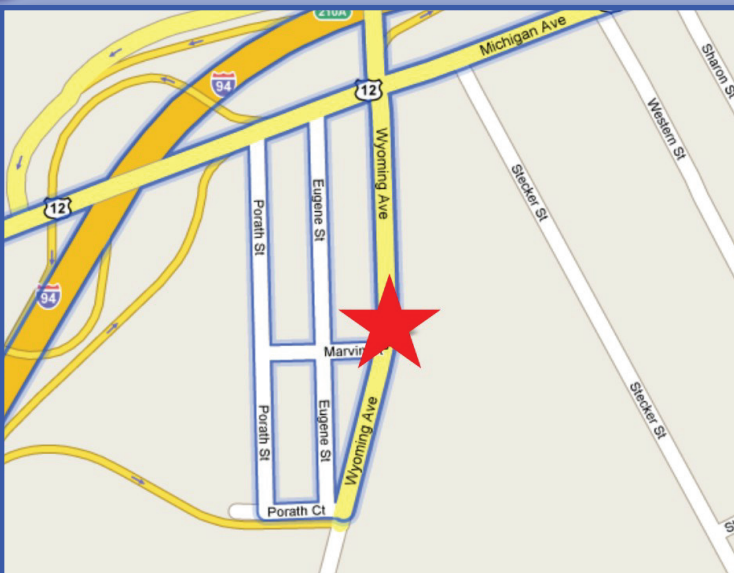
Average Daily Traffic  
at Michigan Ave and  
Wyoming

**22,000**



- Building Lounge with Vending & Game Room
- Fuel Station & Convenience Store
- Building provided Wireless & Phone - Available Soon

### LOCATION AND SITE PHOTO



#### Contact Information:

**DAMON JORDAN** Portfolio Manager  
586.939.7000 x2992 • [djordan@crownterprisesinc.com](mailto:djordan@crownterprisesinc.com)