



# MANSELL

## COURT



New Ownership  
New Renovations

---

10, 20, 30, 50 & 70  
Mansell Court East  
Alpharetta, GA

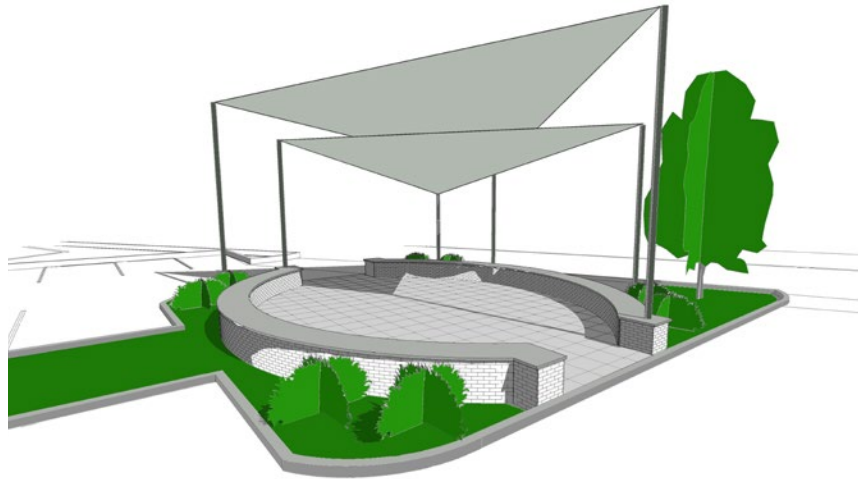
# OFFICE FEATURES

- Creative/Loft style office suites
- 16' ceiling heights available
- Fiber-optic networking
- 5/1000 parking ratio
- Monument signage opportunities
- On-site property management



	10 MANSELL COURT	20 MANSELL COURT	30 MANSELL COURT	50 MANSELL COURT	70 MANSELL COURT
STORIES	1	1	2	1	2
BUILDING SIZE RSF	54,798	57,180	28,478	13,848	34,174
AVAILABLE RSF	22,384	18,052	1,723	Fully Leased	11,977

**EXTERIOR UPDATED**  
**NEW OUTDOOR COURTYARD**  
**NEW SIGNAGE**  
**WEEKLY FOOD TRUCKS**



New Courtyard Concept

## OFFICE LOCATION

AVALON, NORTH POINT MALL AND MANY RETAIL OPTIONS ALONG MANSELL ROAD

- Ideal North Fulton location - just off GA-400
- Easy access from Mansell Road or Old Roswell Road
- Multiple retail and dining options within short walk or quick drive
- Multiple entertainment options within 10 minute drive including Verizon Amphitheatre, Top Golf, Andretti Indoor Karting and Main Event

# AMENITIES

**AMENITIES**

**MANSELL COURT**

**Restaurants:** Flying Biscuit, TINDRUM ASIAN KITCHEN, SPROUTS FARMERS MARKET, BARBERITOS, SUBWAY, CHIPOTLE, Starbucks, Broken Egg Cafe, LONGHORN STEAKHOUSE, Chick-fil-c, Big Pie In the Sky Pizza, The Melting Pot, Salad Express, Pappadeaux Seafood Kitchen, On the Border Mexican Grill & Cantina, Hampton Inn, WINGATE BY WYNDHAM, Ray's AT KILLER CREEK, Lenny's + Subs, Wendy's, P.F. Chang's, Five Guys, ZOE'S KITCHEN, CHIPOTLE, Tanera Bread, Target.

**Hotels:** Hilton Garden Inn, AVALON.

**Other:** Walmart Supercenter, Primrose School, Topgolf, North Point Mall, HomeWood Suites By Hilton, Hyatt Place.

**Map Labels:** Roswell Road, Mansell Road, Westside Parkway, Old Roswell Road, 400.

**Distance Markers:** 70, 50, 30, 20, 10.



## MANSELL COURT

FOR MORE INFORMATION

Heather Lamb  
+1 404 812 5070  
[heather.lamb@cbre.com](mailto:heather.lamb@cbre.com)

Parker Nelson  
+1 404 812 5089  
[parker.nelson@cbre.com](mailto:parker.nelson@cbre.com)

CBRE, Inc.  
+1 404 504 7900  
[cbre.com/atlanta](http://cbre.com/atlanta)

# CBRE