

City Center 19 Mamaroneck Avenue White Plains, NY



Size

Grade Level

6,674 SF

3,700 SF

Second Level

56,000 SF (Existing Toys R Us)

Co-Tenants

Target, ShopRite, Nordstrom Rack, Toys R Us, Blaze Pizza, Barnes & Noble, Showcase Cinemas Deluxe, Buffalo Wild Wings, Morton's Steakhouse, White Plains Performing Arts Center

Neighbors

H&M, Forever21, Sears, JCPenney, Blink Fitness, Macy's Backstage, Walmart, Burlington Coat Factory, Panera Bread, Chipotle, Anthony's Coal Fired Pizza, T.G.I.Friday's



Contact Our Exclusive Agents:

Jeffrey L. Nable

jnable@ripcony.com

516.933.8880

Jeremy Isaacs

jisaacs@ripcony.com

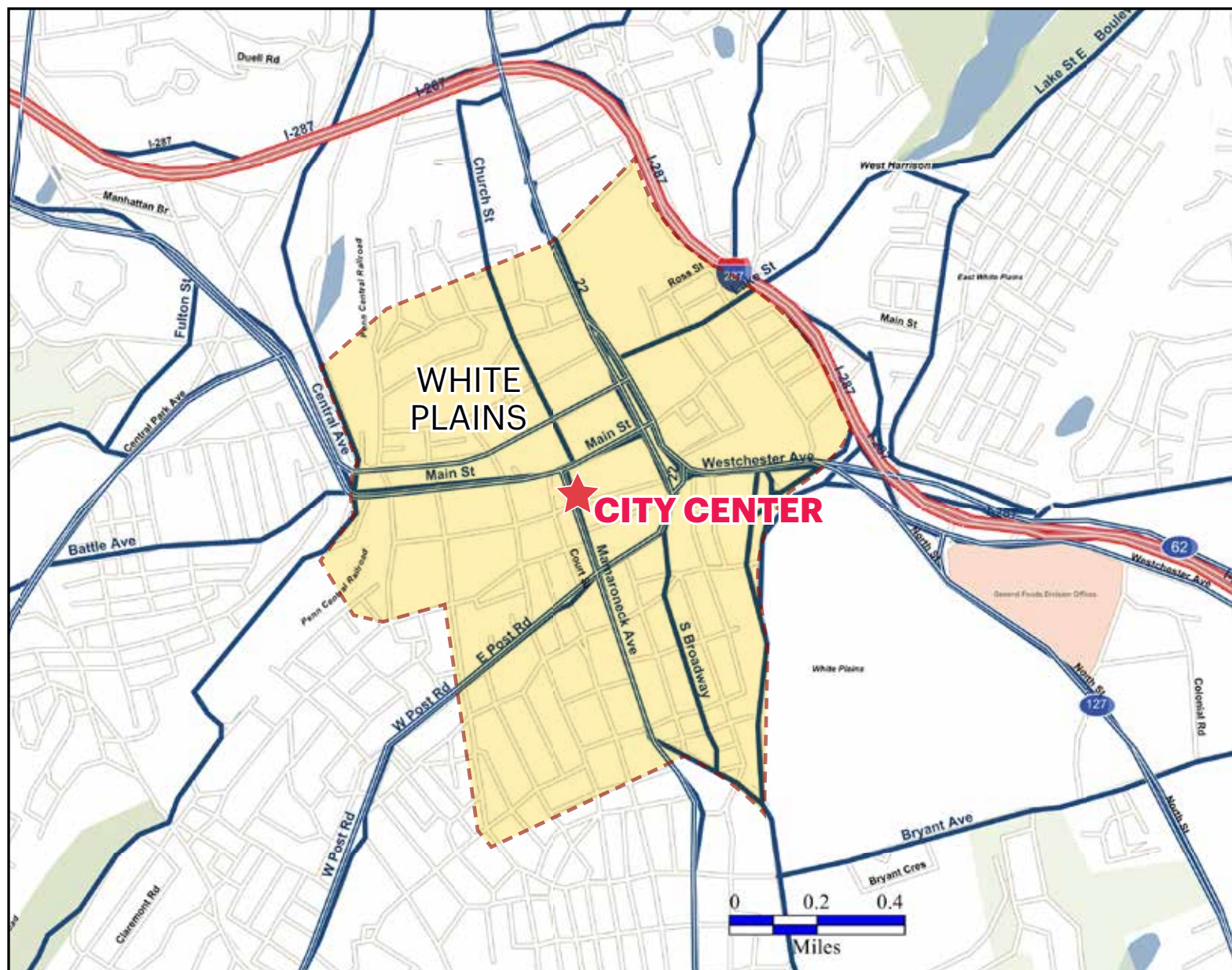
516.933.8880

RIPCO
REAL ESTATE

Owned & Managed By:

KITE
REALTY GROUP

RIPCO
REAL ESTATE



DEMOGRAPHICS

1
mile radius

- Population 39,258
- Households 16,606
- Med HH Income \$78,801
- Daytime Population 43,126

3
mile radius

- Population 110,145
- Households 42,068
- Med HH Income \$114,043
- Daytime Population 88,591

5
mile radius

- Population 206,821
- Households 74,969
- Med HH Income \$135,487
- Daytime Population 176,725



**38,000 EMPLOYEES
TOP COMPANIES**

- Nine West Group
- Allegiance Financial
- ITT Corporation
- Nokia
- Heineken USA
- Alliance Bernstein
- Xylem
- Bunge and Combe
- Dannon
- Fifth Street Finance Corp
- New York Power Authority
- Krasdale Foods



SCHOOLS - OVER 6,000 PUPILS

- COLLEGES/UNIVERSITIES:
- Fordham University Westchester Campus
 - The College of Westchester
 - Berkeley College
- 5 Elementary Schools (K-5)
2 Middle Schools (6-8)
1 High School (9-12)



HOSPITALS

- New York Presbyterian Hospital
- White Plains Hospital



HOSPITALITIES

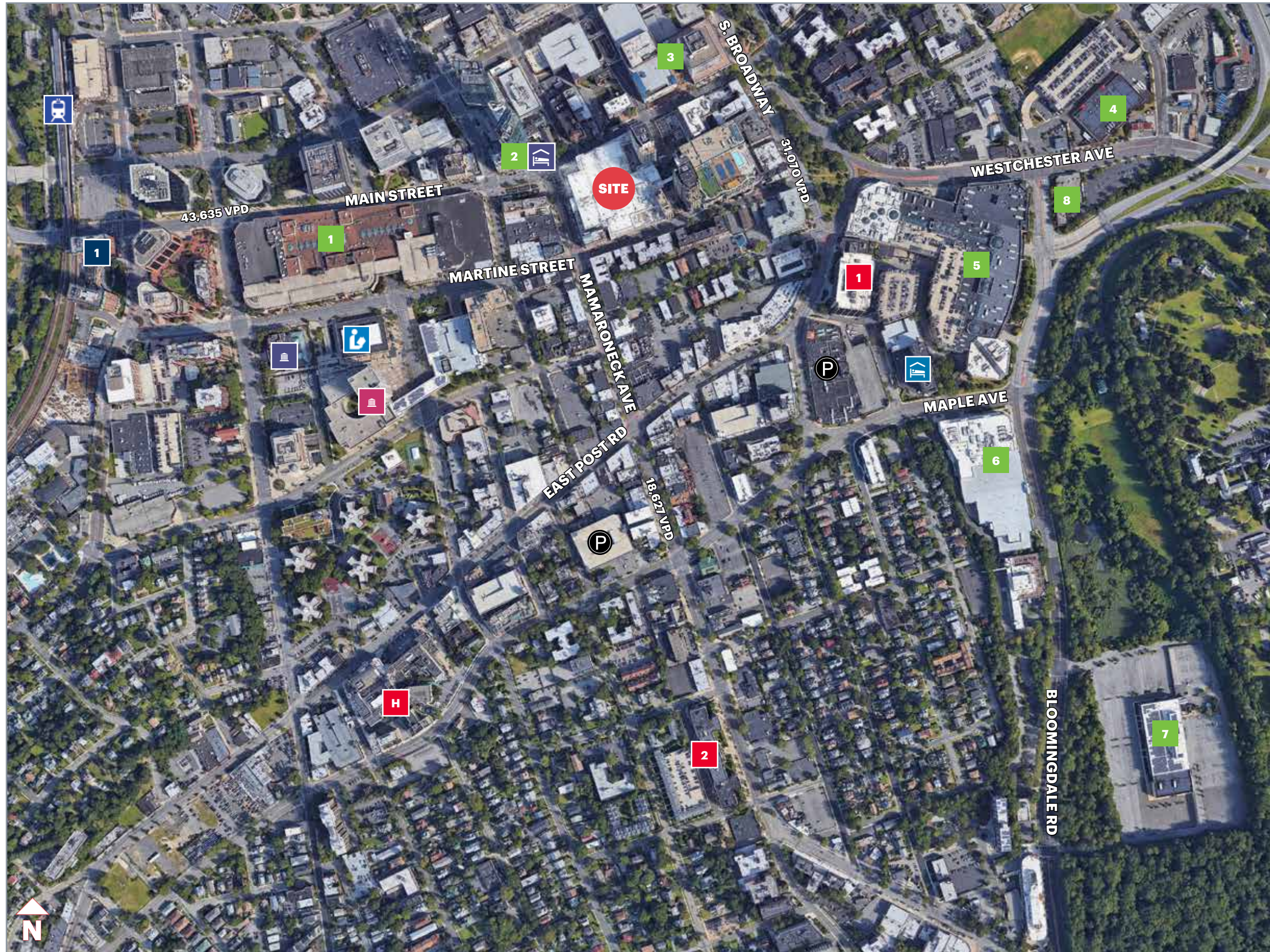
- Ritz Carlton
- Residence Inn White Plains
- Cambria Hotel & Suites
- Crowne Plaza White Plains



PARKS AND RECREATION

- Ebersole Ice Rink
- Maple Moor Golf Course
- Saxon Woods Park
- Silver Lake Preserve
- Westchester Golf Range





SITE

CITY CENTER: TARGET, SHOPRITE, BUFFALO WILD WINGS, NYSC, NORDSTROM RACK, SHOWCASE CINEMAS, BARNES & NOBLE, TOYS R US/BABIES R US

AREA RETAIL

- 1** GALLERIA @ WHITE PLAINS
MACY'S BACKSTAGE, SEARS, JCPENNEY, H&M, FOREVER 21, BLINK FITNESS
- 2** SERAFINA, BLT STEAK
- 3** WALMART, BURLINGTON, PANERA BREAD
- 4** STOP & SHOP
- 5** THE WESTCHESTER: NORDSTROM, TIFFANY & CO., NEIMAN MARCUS, COACH, CRATE & BARREL, GUCCI
- 6** THE SOURCE AT WHITE PLAINS: WHOLE FOODS, DICKS SPORTING GOODS, RAYMOUR & FLANIGAN, CHEESECAKE FACTORY, WILLIAM SONOMA
- 7** BLOOMINGDALES
- 8** THE CONTAINER STORE

OTHER LANDMARKS

- H** WHITE PLAINS HOSPITAL
- T** WHITE PLAINS TRAIN STATION
- C** CITY COURTHOUSE
- CC** WESTCHESTER COUNTY COURTHOUSE
- L** PUBLIC LIBRARY
- R** THE RITZ CARLTON
- CP** CROWNE PLAZA

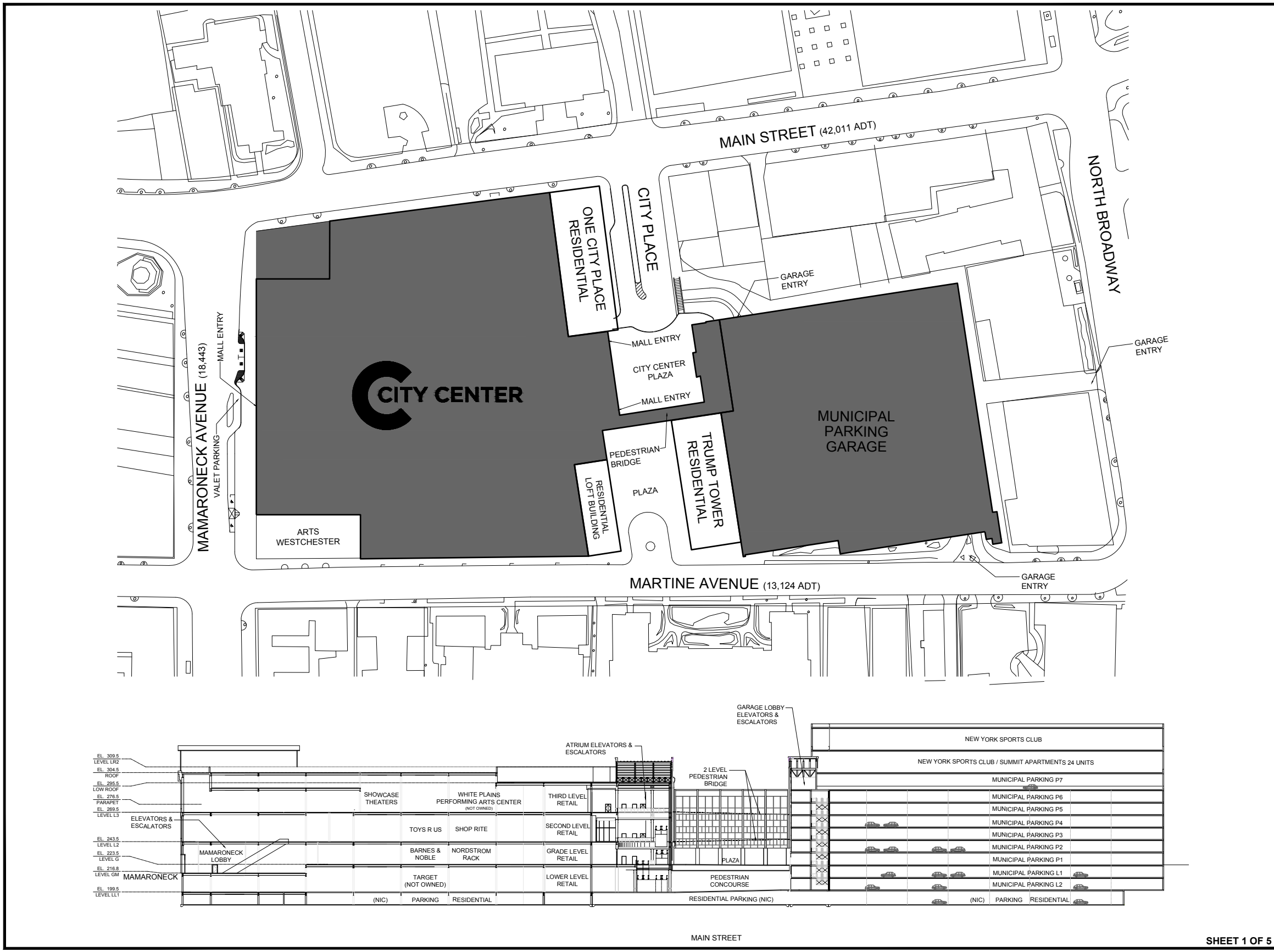
RESIDENTIAL

- 1** 15 BANK APARTMENTS

OFFICE

- 1** ONE WESTCHESTER
- 2** RESIDENCES OF MAMARONECK AVENUE





SITE DATA
 Total GLA 362,456 SF
 New York Sports Club (Not Shown)
 City Owned Parking Garage
 2,038 Spaces

NOTE: Negotiations with the stores listed and others not listed are in progress. No guarantee can be made that the listed stores will open in the center. All conditions and dimensions are subject to variation due to actual field conditions. All dimensions and areas shown should be verified prior to lease execution. This plan is preliminary and subject to change. Sheet size 24x36.

CITY CENTER SECTION WHITE PLAINS, NEW YORK	
Drawn By: eem	CHKD: RM
Date: 01/23/2018	Scale: NTS
CURRENT PLAN	
Project No. 5047	CP



30 S. MERIDIAN STREET
SUITE 1100
INDIANAPOLIS, IN 46204
PHONE 317-577-5600
FAX 317-577-5605



LEVEL DATA

Target (Not Owned) 154,241 SF
Total Level 154,241 SF

Total GLA 362,456 SF
New York Sports Club (Not Shown)
Kiosk Space is Currently Available

City Owned Parking Garage
2,038 Spaces

NOTE: Negotiations with the stores listed and others not listed are in progress. No guarantee can be made that the listed stores will open in the center. All conditions and dimensions are subject to variation due to actual field conditions. All dimensions and areas shown should be verified prior to lease execution. This plan is preliminary and subject to change. Sheet size 24x36.

**CITY CENTER
LOWER LEVEL 2 RETAIL
WHITE PLAINS,
NEW YORK**

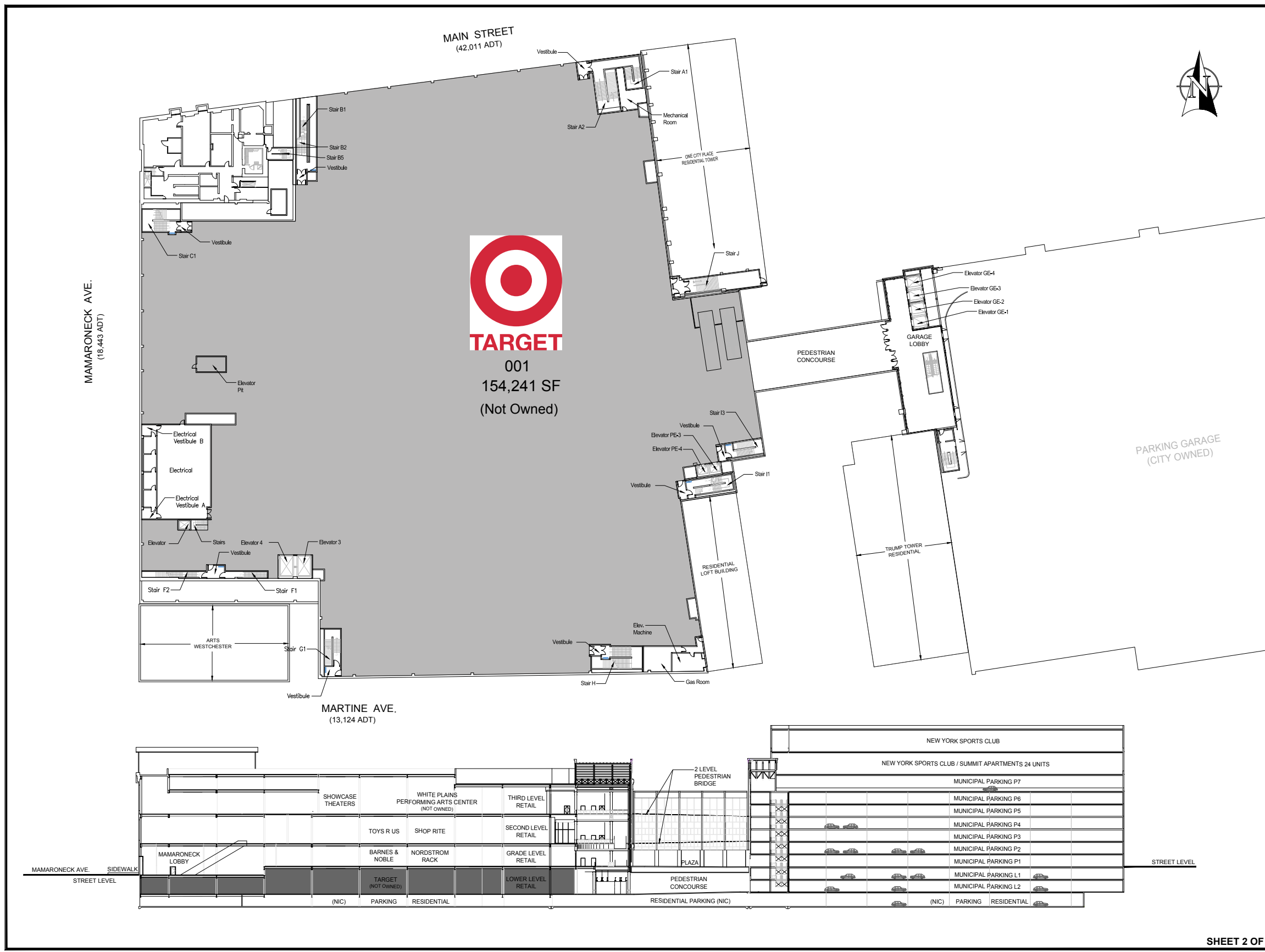
Drawn By: eem CHKD: RM

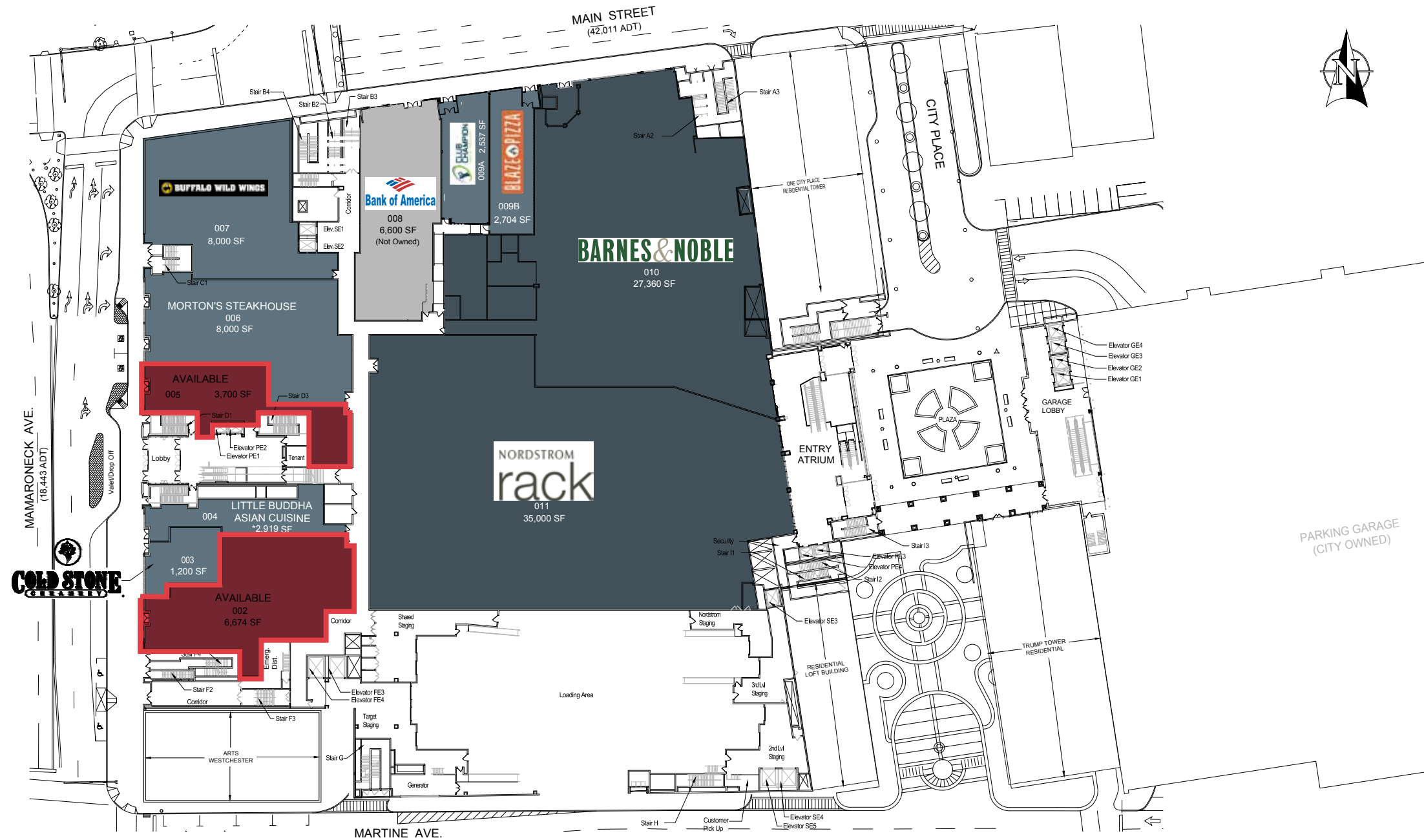
Date: 01/23/2018 Scale: 1" = 30'

CURRENT PLAN

Project No. 5047 CP

SHEET 2 OF 5





KITE REALTY GROUP
 30 S. MERIDIAN STREET
 SUITE 1100
 INDIANAPOLIS, IN 46204
 PHONE 317-577-5600
 FAX 317-577-5605



LEVEL DATA

Available	6,674 SF
Cold Stone Creamery	1,200 SF
Available	2,919 SF
*Mezzanine Not Included	
Available	3,700 SF
Morton's Steakhouse	8,000 SF
Buffalo Wild Wings	8,000 SF
Bank of America (Not Owned)	6,600 SF
Club Champion Golf	2,537 SF
Blaze Pizza	2,704 SF
Barnes & Noble	27,360 SF
Nordstrom Rack	35,000 SF
Total Level	104,694 SF

Total GLA 362,456 SF
 New York Sports Club (Not Shown)
 Kiosk Space Currently Available

City Owned Parking Garage
 2,038 Spaces

NOTE: Negotiations with the stores listed and others not listed are in progress. No guarantee can be made that the listed stores will open in the center. All conditions and dimensions are subject to variation due to actual field conditions. All dimensions and areas shown should be verified prior to lease execution. This plan is preliminary and subject to change. Sheet size 24x36.

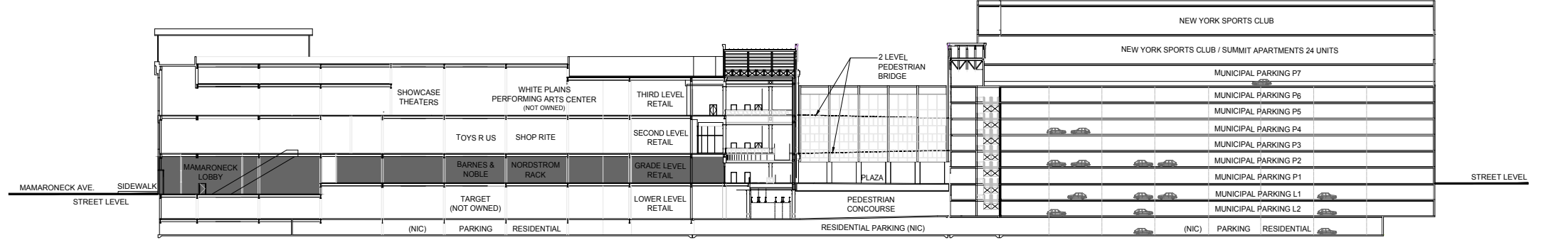
**CITY CENTER
 GRADE LEVEL RETAIL
 WHITE PLAINS,
 NEW YORK**

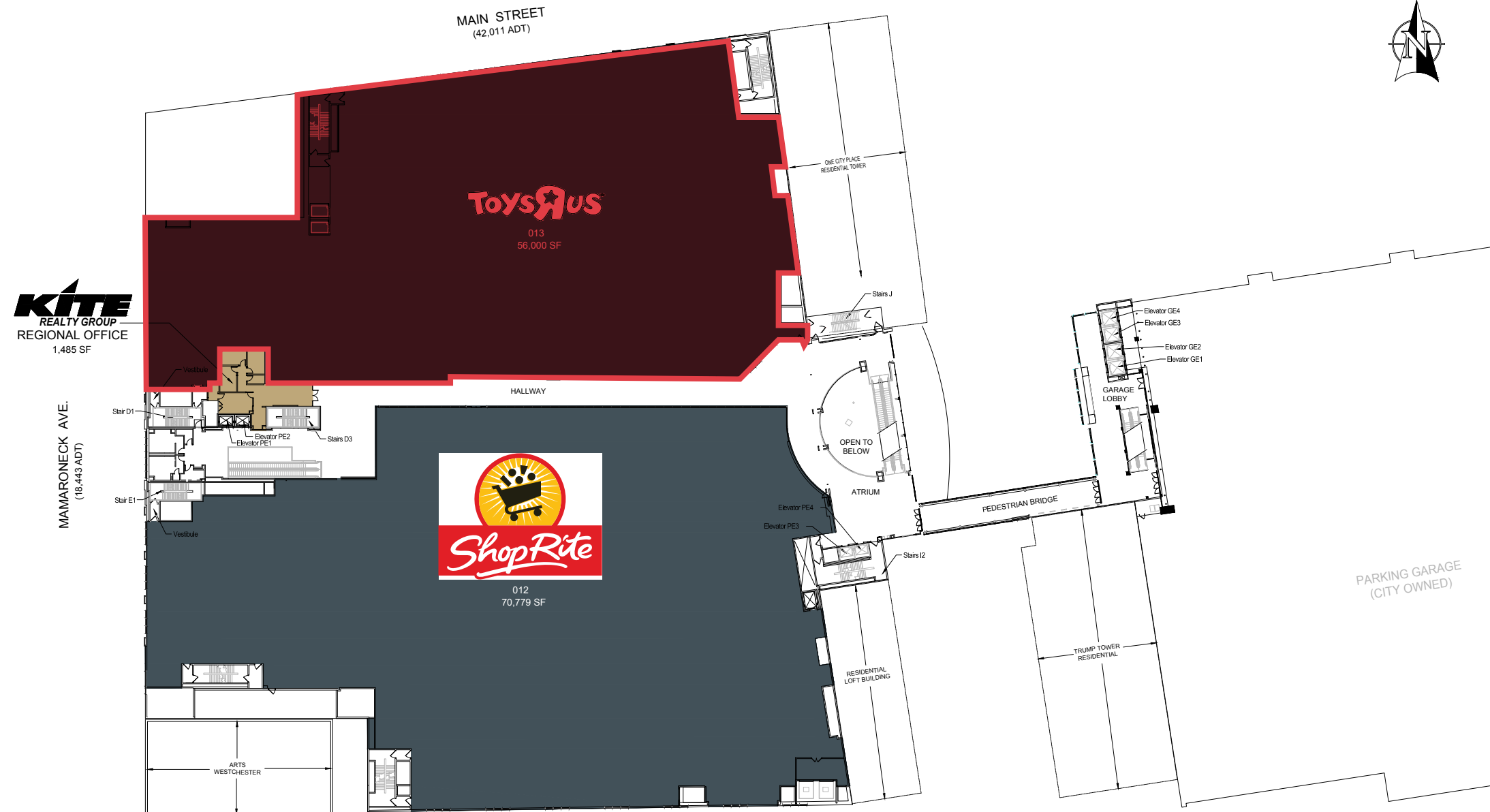
Drawn By: eem CHKD: RM

Date: 01/23/2018 Scale: 1" = 30'

CURRENT PLAN

Project No. 5047 CP





30 S. MERIDIAN STREET
SUITE 1100
INDIANAPOLIS, IN 46204
PHONE 317-577-5600
FAX 317-577-5605



LEVEL DATA

Toys "R" Us	56,000 SF
Shop Rite	70,779 SF
Common Area	21,134 SF
Total Level	147,913 SF

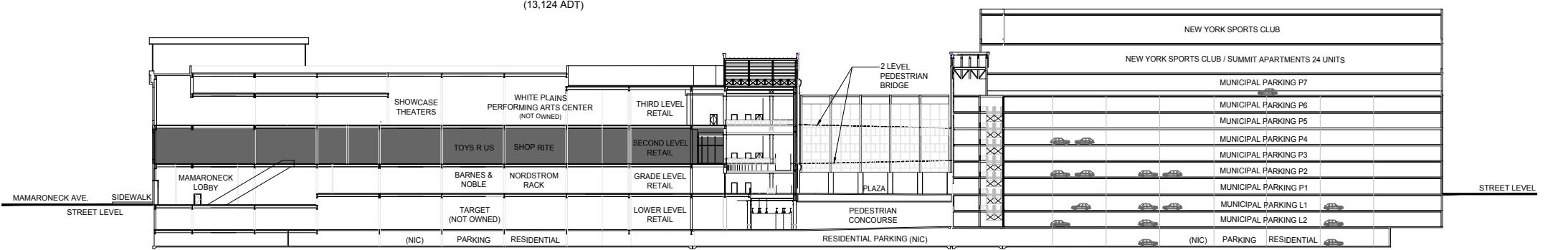
Total GLA 362,456 SF
New York Sports Club (Not Shown)
Kiosk Space Currently Available

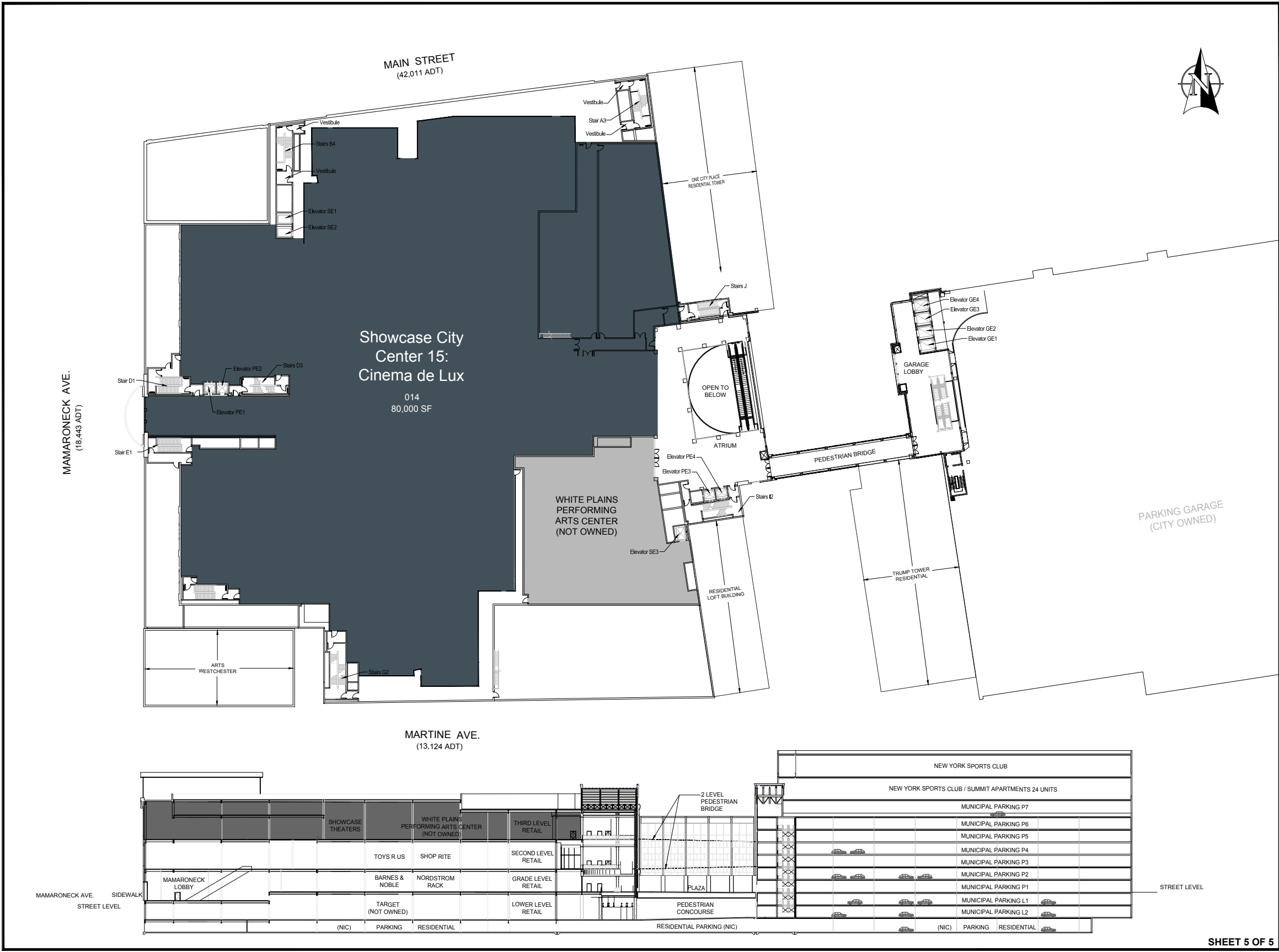
City Owned Parking Garage
2,038 Spaces

NOTE: Negotiations with the stores listed and others not listed are in progress. No guarantee can be made that the listed stores will open in the center. All conditions and dimensions are subject to variation due to actual field conditions. All dimensions and areas shown should be verified prior to lease execution. This plan is preliminary and subject to change. Sheet size 24x36.

**CITY CENTER
2ND LEVEL RETAIL
WHITE PLAINS,
NEW YORK**

Drawn By:	eem	CHKD:	RM
Date:	01/23/2018	Scale:	1" = 30'
CURRENT PLAN			
Project No.	5047	CP	





KITE
REALTY GROUP
30 S. MERIDIAN STREET
SUITE 1100
INDIANAPOLIS, IN 46204
PHONE 317-577-5600
FAX 317-577-5605



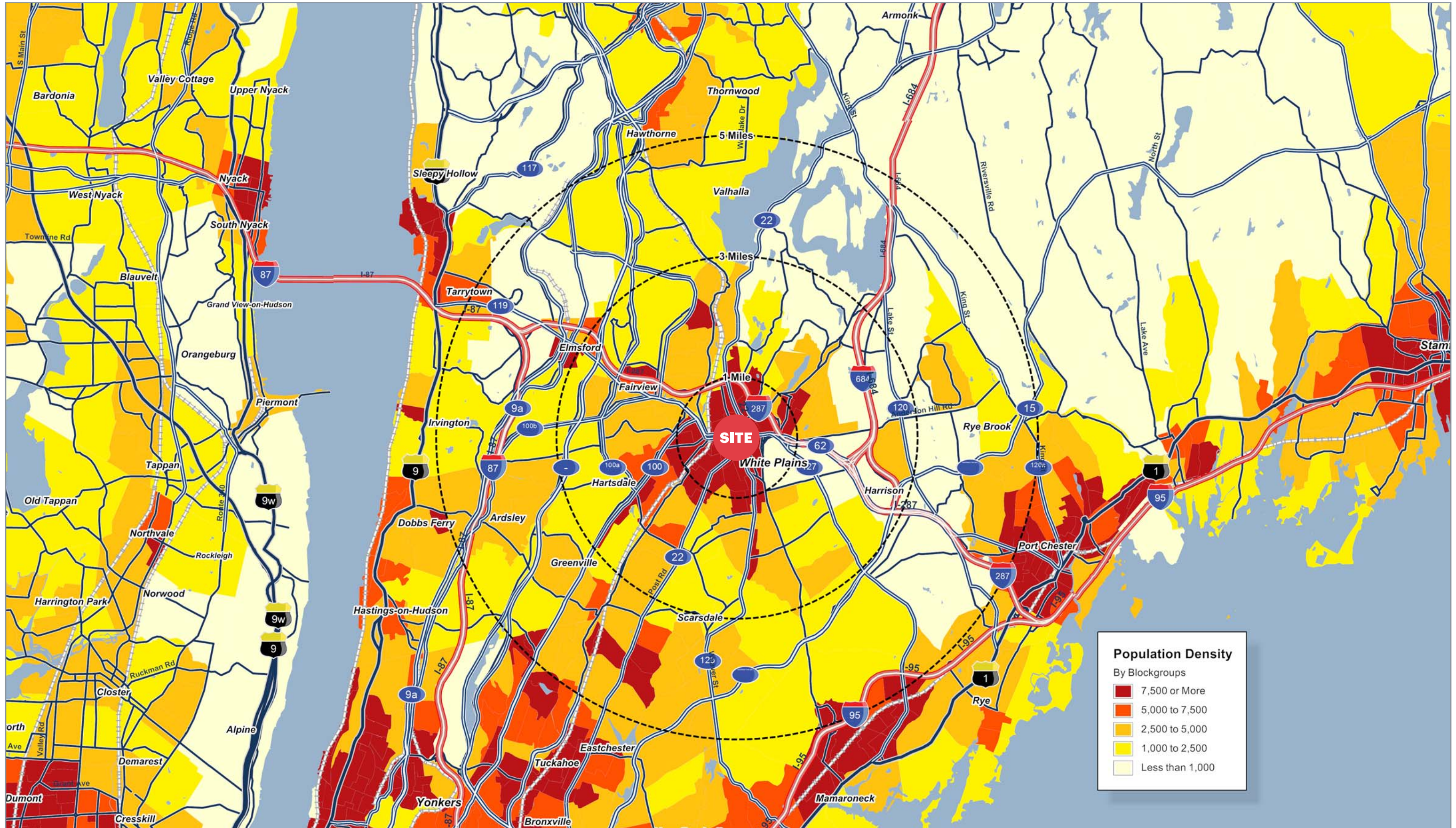
LEVEL DATA

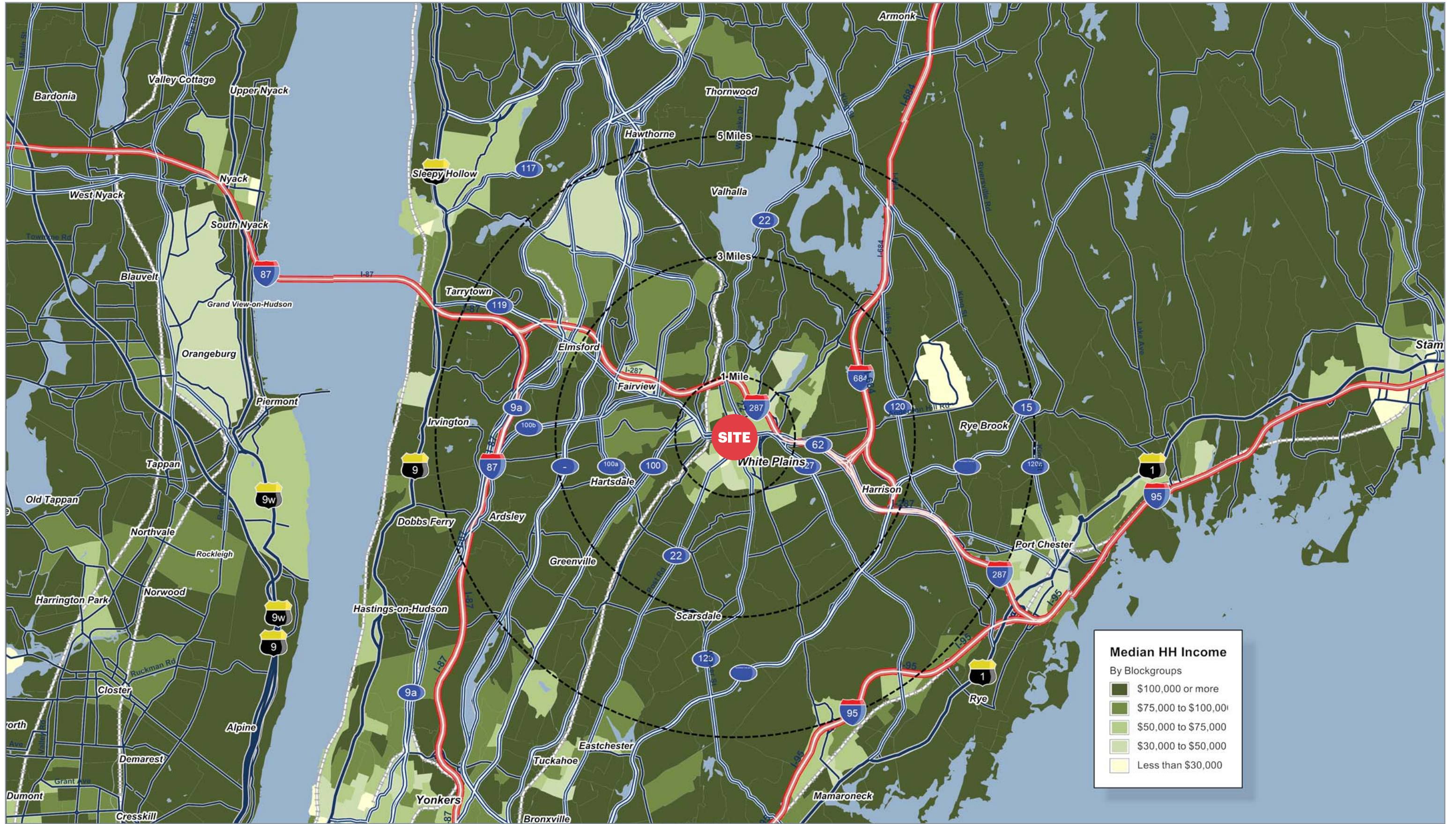
City Center 15	80,000 SF
White Plains Performing Arts Center (Not Owned)	
Total Level	80,000 SF
Total GLA	362,456 SF
New York Sports Club (Not Shown)	
Kiosk Space Currently Available	
City Owned Parking Garage	2,038 Spaces

NOTE: Negotiations with the stores listed and others not listed are in progress. No guarantee can be made that the listed stores will open in the center. All conditions and dimensions are subject to variation due to actual field conditions. All dimensions and areas shown should be verified prior to lease execution. This plan is preliminary and subject to change. Sheet size 24x36.

**CITY CENTER
THIRD LEVEL RETAIL
WHITE PLAINS,
NEW YORK**

Drawn By:	eem	CHKD:	RM
Date:	01/23/2018	Scale:	1/2" = 1'-0"
CURRENT PLAN			
Project No.	5047	CP	





19 Mamaroneck Ave White Plains, NY	1 Mile	3 Miles	5 Miles
Population			
Estimated Population (2017)	39,258	110,145	206,821
Projected Population (2022)	39,814	111,746	209,274
Census Population (2010)	38,187	105,824	199,385
Census Population (2000)	34,444	99,399	190,084
Projected Annual Growth (2017 to 2022)	556 0.3%	1,600 0.3%	2,453 0.2%
Historical Annual Growth (2010 to 2017)	1,070 0.4%	4,321 0.6%	7,436 0.5%
Historical Annual Growth (2000 to 2010)	3,744 1.1%	6,425 0.6%	9,301 0.5%
Estimated Population Density (2017)	12,506 <i>psm</i>	3,897 <i>psm</i>	2,635 <i>psm</i>
Trade Area Size	3.14 <i>sq mi</i>	28.26 <i>sq mi</i>	78.49 <i>sq mi</i>
Households			
Estimated Households (2017)	16,606	42,068	74,969
Projected Households (2022)	16,849	42,710	76,062
Census Households (2010)	16,226	40,669	72,630
Census Households (2000)	14,157	38,086	69,618
Estimated Households with Children (2017)	3,917 23.6%	12,150 28.9%	24,092 32.1%
Estimated Average Household Size (2017)	2.30	2.54	2.66
Average Household Income			
Estimated Average Household Income (2017)	\$109,003	\$162,883	\$194,543
Projected Average Household Income (2022)	\$142,722	\$215,382	\$256,675
Estimated Average Family Income (2017)	\$130,451	\$205,091	\$239,918
Median Household Income			
Estimated Median Household Income (2017)	\$78,801	\$114,043	\$135,487
Projected Median Household Income (2022)	\$91,609	\$131,331	\$155,501
Estimated Median Family Income (2017)	\$101,050	\$147,910	\$170,549
Per Capita Income			
Estimated Per Capita Income (2017)	\$46,300	\$62,395	\$70,774
Projected Per Capita Income (2022)	\$60,587	\$82,502	\$93,543
Estimated Per Capita Income 5 Year Growth	\$14,287 30.9%	\$20,107 32.2%	\$22,768 32.2%
Estimated Average Household Net Worth (2017)	\$1,130,743	\$1,557,209	\$1,809,695
Daytime Demos (2017)			
Total Businesses	4,263	8,348	15,098
Total Employees	43,126	88,591	176,725
Company Headquarter Businesses	46 1.1%	108 1.3%	201 1.3%
Company Headquarter Employees	3,469 8.0%	9,899 11.2%	23,551 13.3%
Employee Population per Business	10.1	10.6	11.7
Residential Population per Business	9.2	13.2	13.7

19 Mamaroneck Ave White Plains, NY	1 Mile	3 Miles	5 Miles
Race & Ethnicity			
White (2017)	22,031 56.1%	69,031 62.7%	142,965 69.1%
Black or African American (2017)	6,854 17.5%	17,821 16.2%	24,559 11.9%
American Indian or Alaska Native (2017)	319 0.8%	481 0.4%	604 0.3%
Asian (2017)	3,247 8.3%	9,961 9.0%	20,830 10.1%
Hawaiian or Pacific Islander (2017)	14 -	47 -	76 -
Other Race (2017)	5,073 12.9%	9,061 8.2%	11,891 5.7%
Two or More Races (2017)	1,720 4.4%	3,743 3.4%	5,896 2.9%
Not Hispanic or Latino Population (2017)	25,607 65.2%	83,578 75.9%	168,952 81.7%
Hispanic or Latino Population (2017)	13,650 34.8%	26,568 24.1%	37,869 18.3%
Not Hispanic or Latino Population (2022)	25,252 63.4%	83,154 74.4%	168,333 80.4%
Hispanic or Latino Population (2022)	14,562 36.6%	28,591 25.6%	40,941 19.6%
Not Hispanic or Latino Population (2010)	24,797 64.9%	81,422 76.9%	166,506 83.5%
Hispanic or Latino Population (2010)	13,391 35.1%	24,402 23.1%	32,879 16.5%
Not Hispanic or Latino Population (2000)	24,357 70.7%	82,845 83.3%	168,470 88.6%
Hispanic or Latino Population (2000)	10,087 29.3%	16,554 16.7%	21,614 11.4%
Projected Hispanic Annual Growth (2017 to 2022)	912 1.3%	2,024 1.5%	3,072 1.6%
Historic Hispanic Annual Growth (2000 to 2017)	3,563 2.1%	10,014 3.6%	16,255 4.4%
Age Distribution (2017)			
Age Under 5	2,161 5.5%	5,764 5.2%	10,324 5.0%
Age 5 to 9 Years	1,846 4.7%	5,894 5.4%	11,907 5.8%
Age 10 to 14 Years	1,784 4.5%	6,283 5.7%	13,149 6.4%
Age 15 to 19 Years	1,998 5.1%	6,652 6.0%	13,992 6.8%
Age 20 to 24 Years	2,766 7.0%	6,833 6.2%	12,915 6.2%
Age 25 to 29 Years	3,588 9.1%	7,379 6.7%	11,593 5.6%
Age 30 to 34 Years	3,374 8.6%	7,137 6.5%	11,494 5.6%
Age 35 to 39 Years	3,026 7.7%	7,343 6.7%	12,584 6.1%
Age 40 to 44 Years	2,546 6.5%	7,037 6.4%	13,299 6.4%
Age 45 to 49 Years	2,504 6.4%	7,605 6.9%	14,822 7.2%
Age 50 to 54 Years	2,568 6.5%	7,851 7.1%	15,200 7.3%
Age 55 to 59 Years	2,600 6.6%	8,124 7.4%	15,409 7.5%
Age 60 to 64 Years	2,294 5.8%	7,069 6.4%	13,429 6.5%
Age 65 to 74 Years	3,324 8.5%	10,550 9.6%	20,019 9.7%
Age 75 to 84 Years	1,849 4.7%	5,598 5.1%	10,756 5.2%
Age 85 Years or Over	1,028 2.6%	3,025 2.7%	5,930 2.9%
Median Age	37.9	40.7	41.5
Gender Age Distribution (2017)			
Female Population	20,103 51.2%	56,997 51.7%	106,364 51.4%
Age 0 to 19 Years	3,819 19.0%	12,100 21.2%	24,142 22.7%
Age 20 to 64 Years	12,453 61.9%	33,578 58.9%	61,073 57.4%
Age 65 Years or Over	3,831 19.1%	11,320 19.9%	21,149 19.9%
Female Median Age	40.7	42.8	43.3
Male Population	19,154 48.8%	53,148 48.3%	100,456 48.6%
Age 0 to 19 Years	3,971 20.7%	12,493 23.5%	25,229 25.1%
Age 20 to 64 Years	12,813 66.9%	32,801 61.7%	59,672 59.4%
Age 65 Years or Over	2,371 12.4%	7,854 14.8%	15,556 15.5%
Male Median Age	35.5	38.7	39.8

19 Mamaroneck Ave White Plains, NY	1 Mile	3 Miles	5 Miles
Household Income Distribution (2017)			
HH Income \$200,000 or More	2,174 13.1%	9,360 22.2%	21,861 29.2%
HH Income \$150,000 to \$199,999	1,576 9.5%	4,855 11.5%	8,583 11.4%
HH Income \$100,000 to \$149,999	2,491 15.0%	6,906 16.4%	12,185 16.3%
HH Income \$75,000 to \$99,999	1,930 11.6%	4,403 10.5%	7,277 9.7%
HH Income \$50,000 to \$74,999	2,233 13.4%	4,933 11.7%	8,003 10.7%
HH Income \$35,000 to \$49,999	1,909 11.5%	3,918 9.3%	5,834 7.8%
HH Income \$25,000 to \$34,999	1,099 6.6%	2,179 5.2%	3,319 4.4%
HH Income \$15,000 to \$24,999	1,420 8.6%	2,543 6.0%	3,709 4.9%
HH Income Under \$15,000	1,773 10.7%	2,971 7.1%	4,199 5.6%
HH Income \$35,000 or More	12,313 74.2%	34,376 81.7%	63,742 85.0%
HH Income \$75,000 or More	8,171 49.2%	25,525 60.7%	49,905 66.6%
Housing (2017)			
Total Housing Units	17,230	43,545	77,485
Housing Units Occupied	16,606 96.4%	42,068 96.6%	74,969 96.8%
Housing Units Owner-Occupied	6,966 41.9%	26,744 63.6%	53,441 71.3%
Housing Units, Renter-Occupied	9,640 58.1%	15,325 36.4%	21,528 28.7%
Housing Units, Vacant	624 3.6%	1,476 3.4%	2,516 3.2%
Marital Status (2017)			
Never Married	13,595 40.6%	33,055 35.9%	58,506 34.1%
Currently Married	12,028 35.9%	41,329 44.8%	84,284 49.2%
Separated	2,485 7.4%	4,613 5.0%	7,132 4.2%
Widowed	1,844 5.5%	4,619 5.0%	8,204 4.8%
Divorced	3,515 10.5%	8,588 9.3%	13,315 7.8%
Household Type (2017)			
Population Family	28,548 72.7%	88,503 80.4%	171,476 82.9%
Population Non-Family	9,664 24.6%	18,373 16.7%	27,723 13.4%
Population Group Quarters	1,045 2.7%	3,269 3.0%	7,622 3.7%
Family Households	8,662 52.2%	26,837 63.8%	51,915 69.2%
Non-Family Households	7,944 47.8%	15,231 36.2%	23,054 30.8%
Married Couple with Children	2,528 21.0%	9,140 22.1%	19,376 23.0%
Average Family Household Size	3.3	3.3	3.3
Household Size (2017)			
1 Person Households	6,612 39.8%	12,805 30.4%	19,502 26.0%
2 Person Households	4,633 27.9%	12,379 29.4%	22,174 29.6%
3 Person Households	2,184 13.2%	6,521 15.5%	12,269 16.4%
4 Person Households	1,560 9.4%	5,683 13.5%	12,281 16.4%
5 Person Households	774 4.7%	2,682 6.4%	5,561 7.4%
6 or More Person Households	843 5.1%	1,999 4.8%	3,182 4.2%
Household Vehicles (2017)			
Households with 0 Vehicles Available	3,359 20.2%	4,938 11.7%	6,750 9.0%
Households with 1 Vehicles Available	7,968 48.0%	16,960 40.3%	26,121 34.8%
Households with 2 or More Vehicles Available	5,279 31.8%	20,171 47.9%	42,098 56.2%
Total Vehicles Available	20,299	65,540	128,312
Average Vehicles Per Household	1.2	1.6	1.7

19 Mamaroneck Ave White Plains, NY	1 Mile	3 Miles	5 Miles
Labor Force (2017)			
Estimated Labor Population Age 16 Years or Over	33,088	90,988	168,727
Estimated Civilian Employed	21,626 65.4%	58,267 64.0%	104,939 62.2%
Estimated Civilian Unemployed	904 2.7%	2,168 2.4%	3,780 2.2%
Estimated in Armed Forces	38 0.1%	42 -	65 -
Estimated Not in Labor Force	10,520 31.8%	30,511 33.5%	59,942 35.5%
Unemployment Rate	2.7%	2.4%	2.2%
Occupation (2015)			
Occupation: Population Age 16 Years or Over	21,626	58,267	104,939
Management, Business, Financial Operations	3,656 16.9%	11,828 20.3%	23,480 22.4%
Professional, Related	5,312 24.6%	16,643 28.6%	32,164 30.6%
Service	5,308 24.5%	11,365 19.5%	16,808 16.0%
Sales, Office	4,595 21.2%	12,485 21.4%	23,252 22.2%
Farming, Fishing, Forestry	2 -	6 -	43 -
Construct, Extraction, Maintenance	1,353 6.3%	2,866 4.9%	4,562 4.3%
Production, Transport Material Moving	1,401 6.5%	3,074 5.3%	4,629 4.4%
White Collar Workers	13,563 62.7%	40,956 70.3%	78,896 75.2%
Blue Collar Workers	8,063 37.3%	17,311 29.7%	26,043 24.8%
Consumer Expenditure (2017)			
Total Household Expenditure	\$1.24 B	\$4.29 B	\$8.84 B
Total Non-Retail Expenditure	\$657 M 53.2%	\$2.31 B 53.8%	\$4.78 B 54.1%
Total Retail Expenditure	\$579 M 46.8%	\$1.98 B 46.2%	\$4.06 B 45.9%
Apparel	\$43.8 M 3.5%	\$153 M 3.6%	\$317 M 3.6%
Contributions	\$62.3 M 5.0%	\$241 M 5.6%	\$516 M 5.8%
Education	\$53.3 M 4.3%	\$199 M 4.6%	\$422 M 4.8%
Entertainment	\$69.8 M 5.6%	\$245 M 5.7%	\$507 M 5.7%
Food and Beverages	\$176 M 14.2%	\$594 M 13.8%	\$1.21 B 13.7%
Furnishings and Equipment	\$43.8 M 3.5%	\$156 M 3.6%	\$323 M 3.7%
Gifts	\$34.0 M 2.8%	\$126 M 2.9%	\$267 M 3.0%
Health Care	\$94.2 M 7.6%	\$311 M 7.2%	\$630 M 7.1%
Household Operations	\$38.4 M 3.1%	\$142 M 3.3%	\$300 M 3.4%
Miscellaneous Expenses	\$17.8 M 1.4%	\$59.5 M 1.4%	\$121 M 1.4%
Personal Care	\$16.0 M 1.3%	\$54.8 M 1.3%	\$112 M 1.3%
Personal Insurance	\$10.1 M 0.8%	\$38.0 M 0.9%	\$80.5 M 0.9%
Reading	\$2.79 M 0.2%	\$9.63 M 0.2%	\$19.8 M 0.2%
Shelter	\$257 M 20.8%	\$895 M 20.9%	\$1.85 B 20.9%
Tobacco	\$6.61 M 0.5%	\$20.2 M 0.5%	\$39.6 M 0.4%
Transportation	\$223 M 18.0%	\$756 M 17.6%	\$1.54 B 17.4%
Utilities	\$88.6 M 7.2%	\$291 M 6.8%	\$588 M 6.6%
Educational Attainment (2017)			
Adult Population Age 25 Years or Over	28,702	78,719	144,534
Elementary (Grade Level 0 to 8)	2,853 9.9%	5,311 6.7%	7,444 5.2%
Some High School (Grade Level 9 to 11)	1,798 6.3%	3,680 4.7%	5,953 4.1%
High School Graduate	5,930 20.7%	13,288 16.9%	21,972 15.2%
Some College	3,569 12.4%	9,309 11.8%	15,857 11.0%
Associate Degree Only	2,140 7.5%	5,493 7.0%	8,983 6.2%
Bachelor Degree Only	6,464 22.5%	19,701 25.0%	39,431 27.3%
Graduate Degree	5,949 20.7%	21,937 27.9%	44,895 31.1%

19 Mamaroneck Ave White Plains, NY	1 Mile	3 Miles	5 Miles
Units In Structure (2015)			
1 Detached Unit	3,228 19.9%	17,575 43.2%	39,267 54.1%
1 Attached Unit	537 3.3%	1,866 4.6%	3,731 5.1%
2 to 4 Units	3,496 21.5%	6,747 16.6%	9,929 13.7%
5 to 9 Units	1,216 7.5%	2,185 5.4%	3,133 4.3%
10 to 19 Units	859 5.3%	1,838 4.5%	2,570 3.5%
20 to 49 Units	1,867 11.5%	3,341 8.2%	4,685 6.5%
50 or More Units	5,365 33.1%	8,450 20.8%	11,563 15.9%
Mobile Home or Trailer	37 0.2%	58 0.1%	74 0.1%
Other Structure	1 -	9 -	18 -
Homes Built By Year (2015)			
Homes Built 2010 or later	27 0.2%	55 0.1%	108 0.1%
Homes Built 2000 to 2009	1,812 11.2%	2,804 6.9%	4,415 6.1%
Homes Built 1990 to 1999	1,009 6.2%	2,636 6.5%	4,653 6.4%
Homes Built 1980 to 1989	1,489 9.2%	3,273 8.0%	5,658 7.8%
Homes Built 1970 to 1979	1,428 8.8%	3,722 9.2%	6,293 8.7%
Homes Built 1960 to 1969	1,922 11.8%	5,872 14.4%	10,428 14.4%
Homes Built 1950 to 1959	2,265 14.0%	8,645 21.3%	17,685 24.3%
Homes Built Before 1949	6,469 39.9%	14,700 36.1%	25,039 34.5%
Home Values (2015)			
Home Values \$1,000,000 or More	279 4.0%	1,728 6.7%	4,178 8.0%
Home Values \$500,000 to \$999,999	2,182 31.5%	9,923 38.2%	21,948 42.3%
Home Values \$400,000 to \$499,999	931 13.5%	3,370 13.0%	6,593 12.7%
Home Values \$300,000 to \$399,999	1,251 18.1%	3,956 15.2%	6,791 13.1%
Home Values \$200,000 to \$299,999	910 13.2%	2,514 9.7%	4,082 7.9%
Home Values \$150,000 to \$199,999	502 7.3%	1,435 5.5%	2,151 4.1%
Home Values \$100,000 to \$149,999	324 4.7%	1,020 3.9%	1,627 3.1%
Home Values \$70,000 to \$99,999	138 2.0%	375 1.4%	694 1.3%
Home Values \$50,000 to \$69,999	18 0.3%	99 0.4%	191 0.4%
Home Values \$25,000 to \$49,999	18 0.3%	86 0.3%	161 0.3%
Home Values Under \$25,000	66 1.0%	165 0.6%	298 0.6%
Owner-Occupied Median Home Value	\$442,421	\$561,218	\$608,275
Renter-Occupied Median Rent	\$1,406	\$1,445	\$1,492
Transportation To Work (2015)			
Drive to Work Alone	10,844 53.3%	32,136 57.9%	59,968 58.2%
Drive to Work in Carpool	1,619 8.0%	3,905 7.0%	6,923 6.7%
Travel to Work by Public Transportation	4,652 22.9%	12,231 22.0%	23,465 22.8%
Drive to Work on Motorcycle	3 -	36 0.1%	43 -
Walk or Bicycle to Work	2,366 11.6%	3,874 7.0%	5,770 5.6%
Other Means	116 0.6%	309 0.6%	510 0.5%
Work at Home	738 3.6%	3,030 5.5%	6,331 6.1%
Travel Time (2015)			
Travel to Work in 14 Minutes or Less	5,534 28.2%	14,247 27.1%	24,012 24.8%
Travel to Work in 15 to 29 Minutes	7,796 39.8%	18,579 35.4%	30,856 31.9%
Travel to Work in 30 to 59 Minutes	5,100 26.0%	13,302 25.3%	24,758 25.6%
Travel to Work in 60 Minutes or More	2,348 12.0%	8,901 17.0%	18,851 19.5%
Average Minutes Travel to Work	21.6	24.8	27.5