



 **CENTENNIAL LAKES**
OFFICE PARK

centenniallakes.com

WATCH  THE VIDEO



Centennial Lakes Office Park

7650 Edinborough Way Suite 575
Edina, MN 55435

Development by

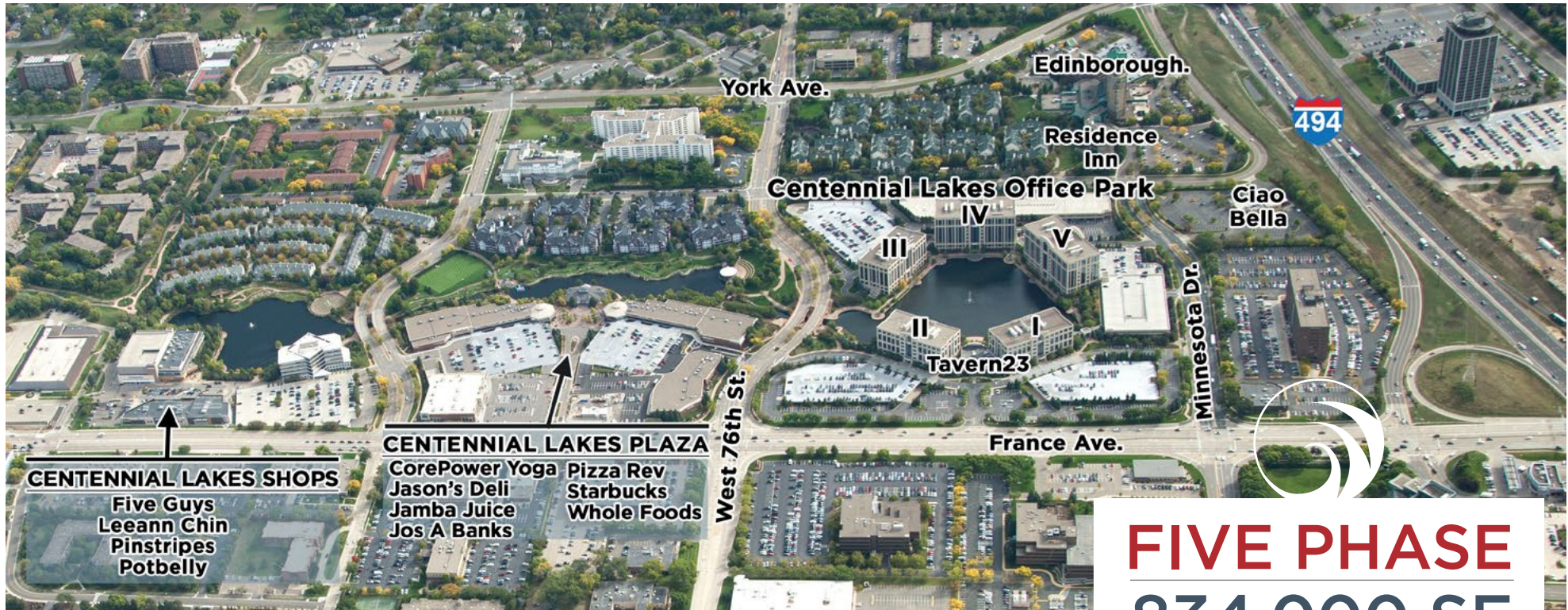


Leasing by



Bob Revoir | 952-893-7586
bob.revoir@cushwake.com

Dan Wicker | 952-893-8254
dan.wicker@cushwake.com



FIVE PHASE 834,000 SF

PREMIER CLASS A OFFICE

Occupancy	90% Leased
Floor Plates	22,000-26,000
Year Built	1997-2000
Parking Ratio	<ul style="list-style-type: none"> 4.05 stalls/1,000 sf Ramp and reserved parking

ON-SITE AMENITIES

- Free, fully equipped conference rooms (in each building) with seating for 22-60 people
- Tavern23 Restaurant and patio (tavern23mn.com)
- Mykenna's café serving breakfast and lunch (Phase IV)
- Convenience store (Phase V)
- On-site property management
- Security guard service 24/7
- Concierge Service
- Electric car charging stations (Phase III)
- Locker rooms/showers (Phase II, IV, V)
- BOMA 360 Designated Building

AMENITIES ADJACENT TO THE PARK

- City of Edina's Centennial Lakes Park which consists of 24 acres, 1.5 miles of paved walking paths, amphitheater, paddle boat rental, ice skating, bent grass putting green & lawn games
- Complete fitness center (pool and full gym) at Edinborough Park
- More than 20 dining and fast casual options located within 1 mile of the park
- Adjacent to Nine Mile Regional Bike Trail
- Nearby hotels: The Westin Edina Galleria, Hilton, and Residence Inn

centenniallakes.com



CLICK A SUITE NUMBER TO SEE FLOOR PLAN

CENTENNIAL LAKES I

7701 France Avenue

Suite 120 | 3,405 sf

Suite 225 | 3,871 sf

Suite 400 | 5,506 sf

CENTENNIAL LAKES II

7601 France Avenue

CENTENNIAL LAKES III

3601 76th Street West

Suite 30 | 1,354 sf

Suite 275 | 4,198 sf

Suite 300 | 22,340 sf

Suite 450 | 14,297 sf

CENTENNIAL LAKES IV

7650 Edinborough Way

Suite 500 | 14,780 sf

CENTENNIAL LAKES V

3600 Minnesota Drive

Suite 70 | 6,623 sf

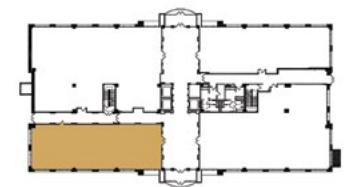
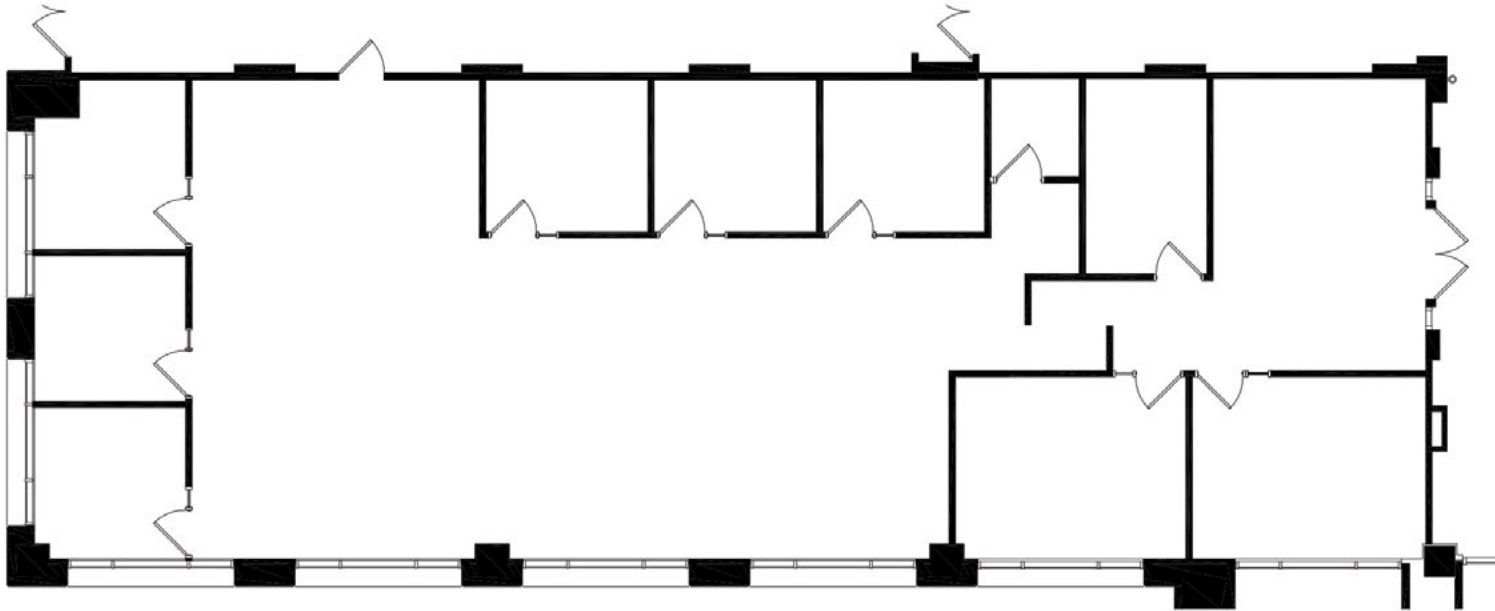
Suite 350 | 3,137 sf

Suite 515 | 3,540 sf

centenniallakes.com

CENTENNIAL LAKES I
7701 France Avenue South

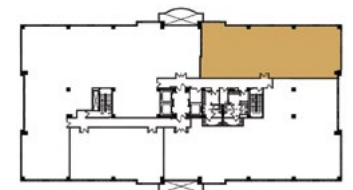
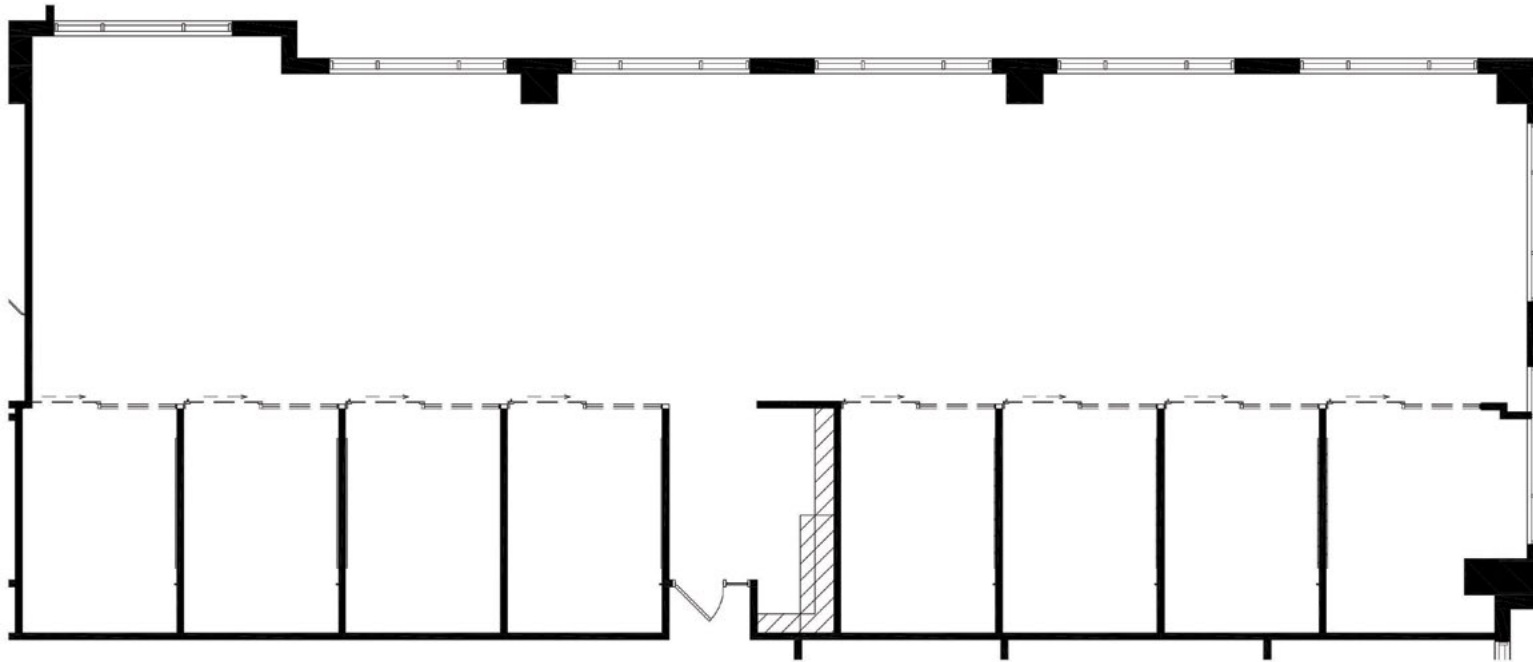
Suite 120 | 3,405 sf



KEY PLAN - 1ST FLOOR

CENTENNIAL LAKES I
7701 France Avenue South

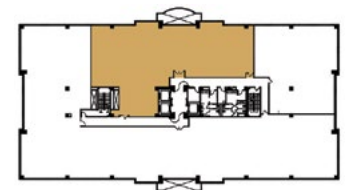
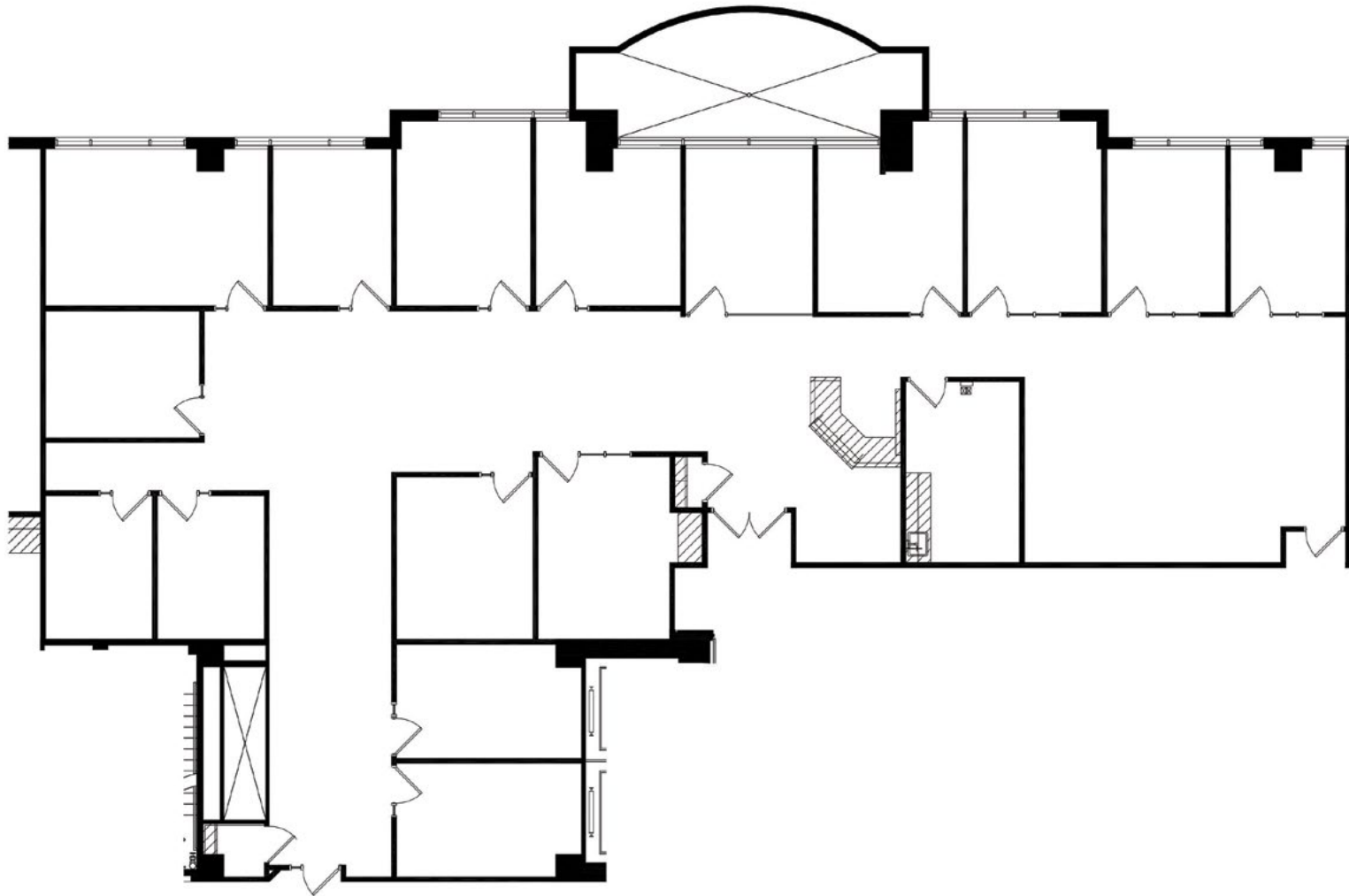
Suite 225 | 3,871 sf



KEY PLAN - 2ND FLOOR

CENTENNIAL LAKES I
7701 France Avenue South

Suite 400 | 5,506 sf

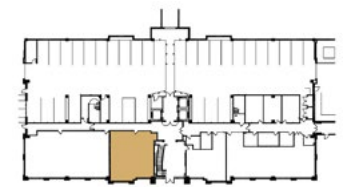
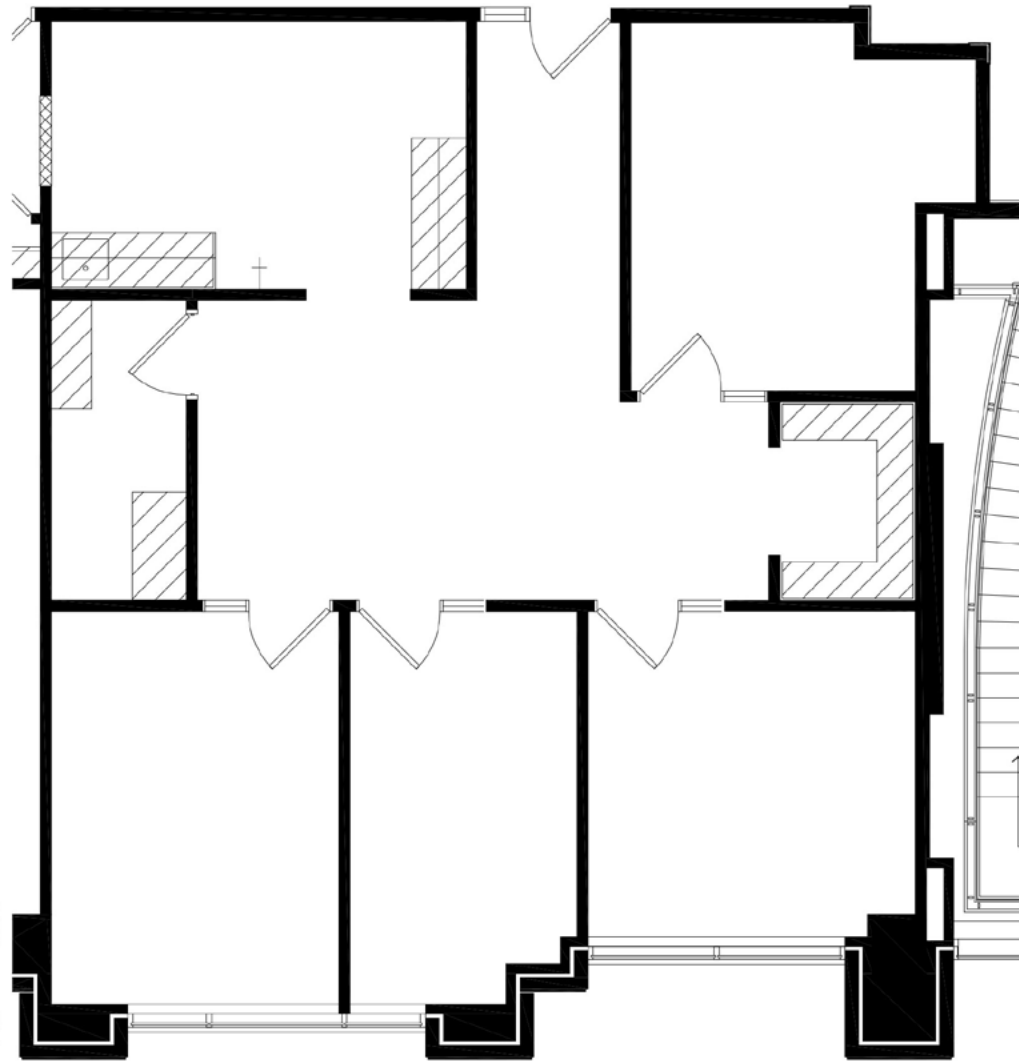


KEY PLAN - 4TH FLOOR

CENTENNIAL LAKES III

3601 West 78th Street

Suite 30 | 1,354 sf

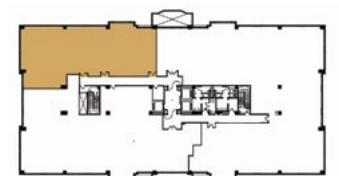
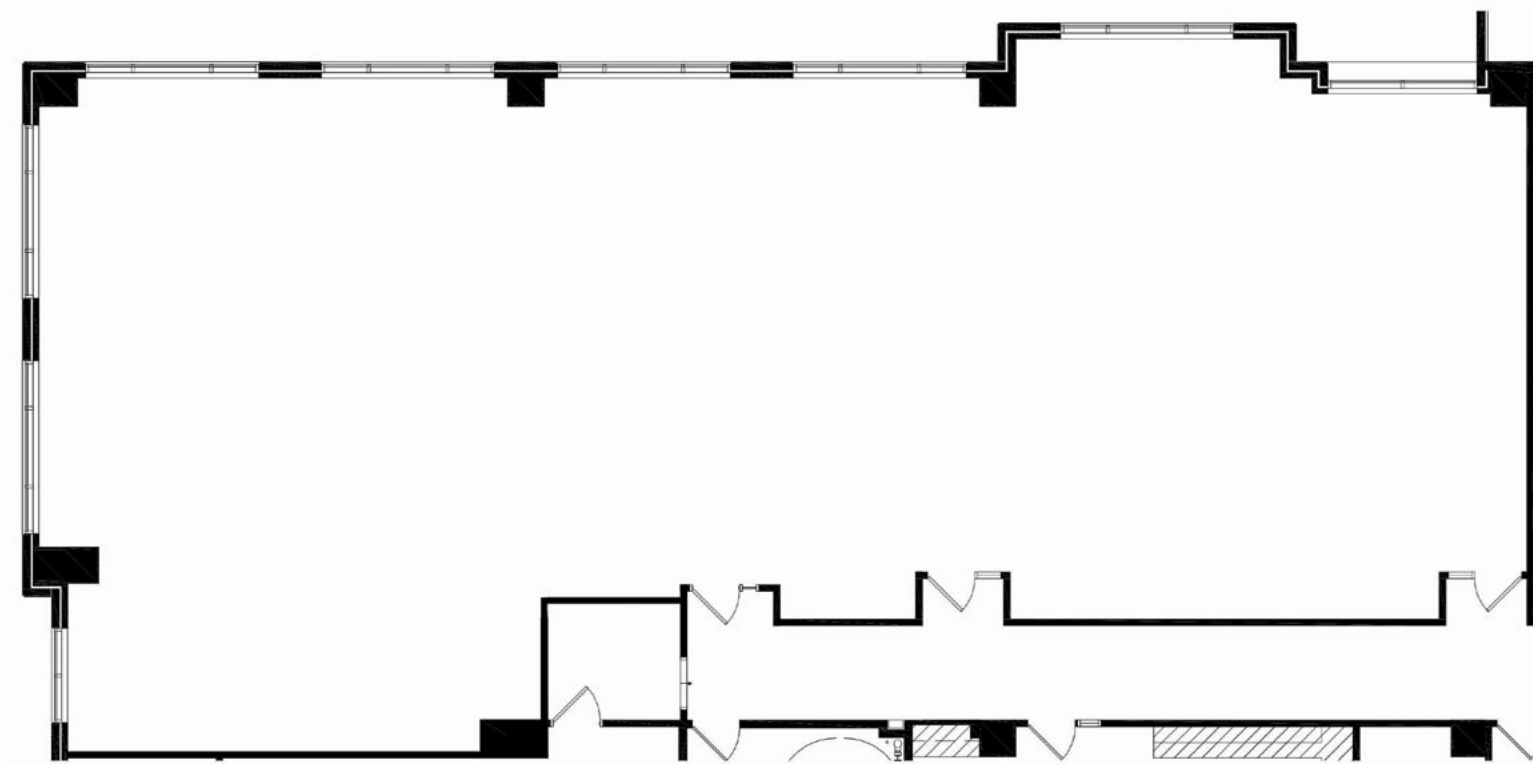


KEY PLAN - LOWER LEVEL

CENTENNIAL LAKES III

3601 West 78th Street

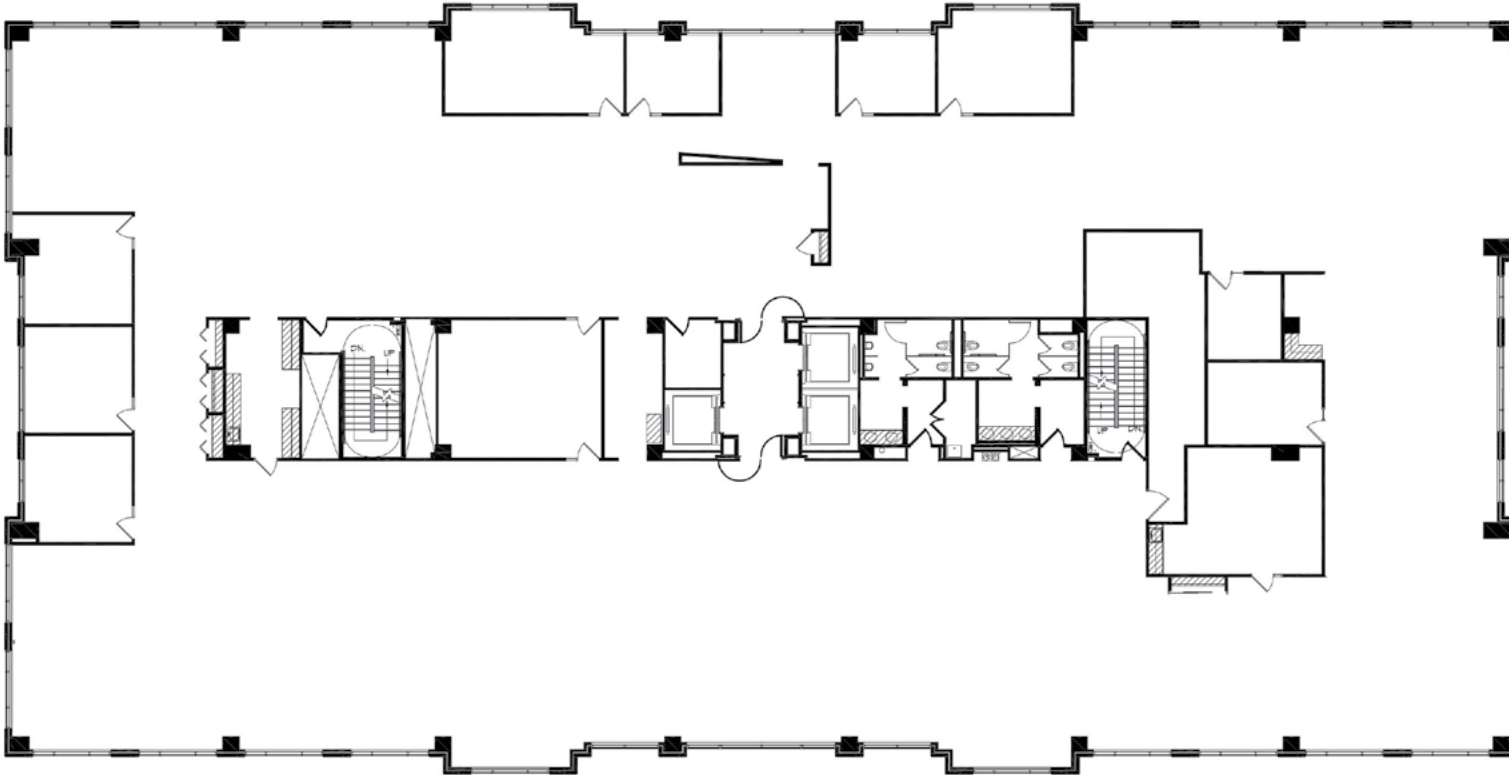
Suite 275 | 4,198 sf



KEY PLAN - 2ND FLOOR

CENTENNIAL LAKES III
3601 West 78th Street

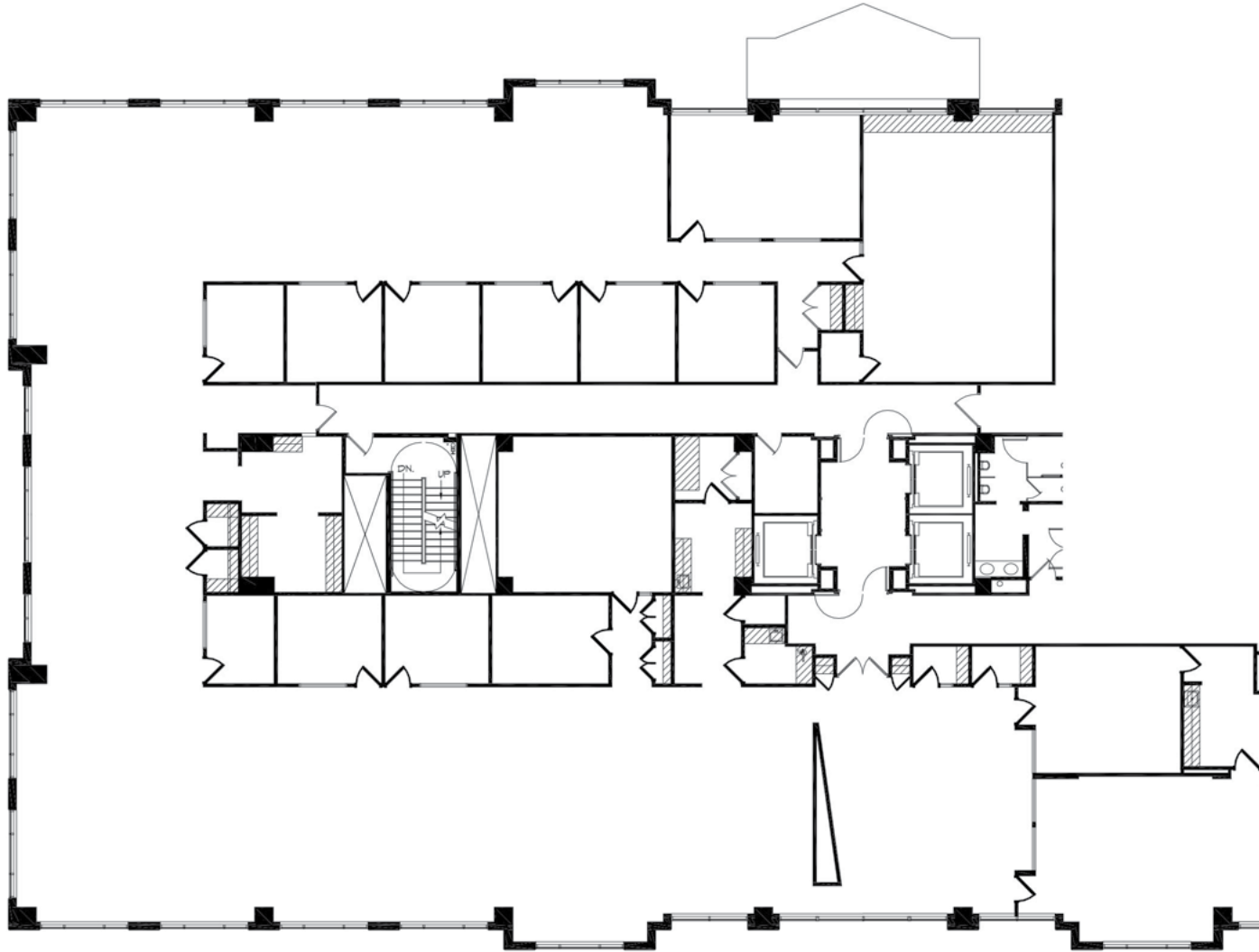
Suite 300 | 22,340 sf



CENTENNIAL LAKES III

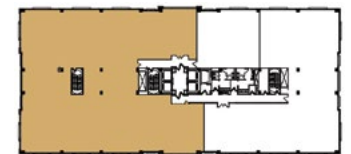
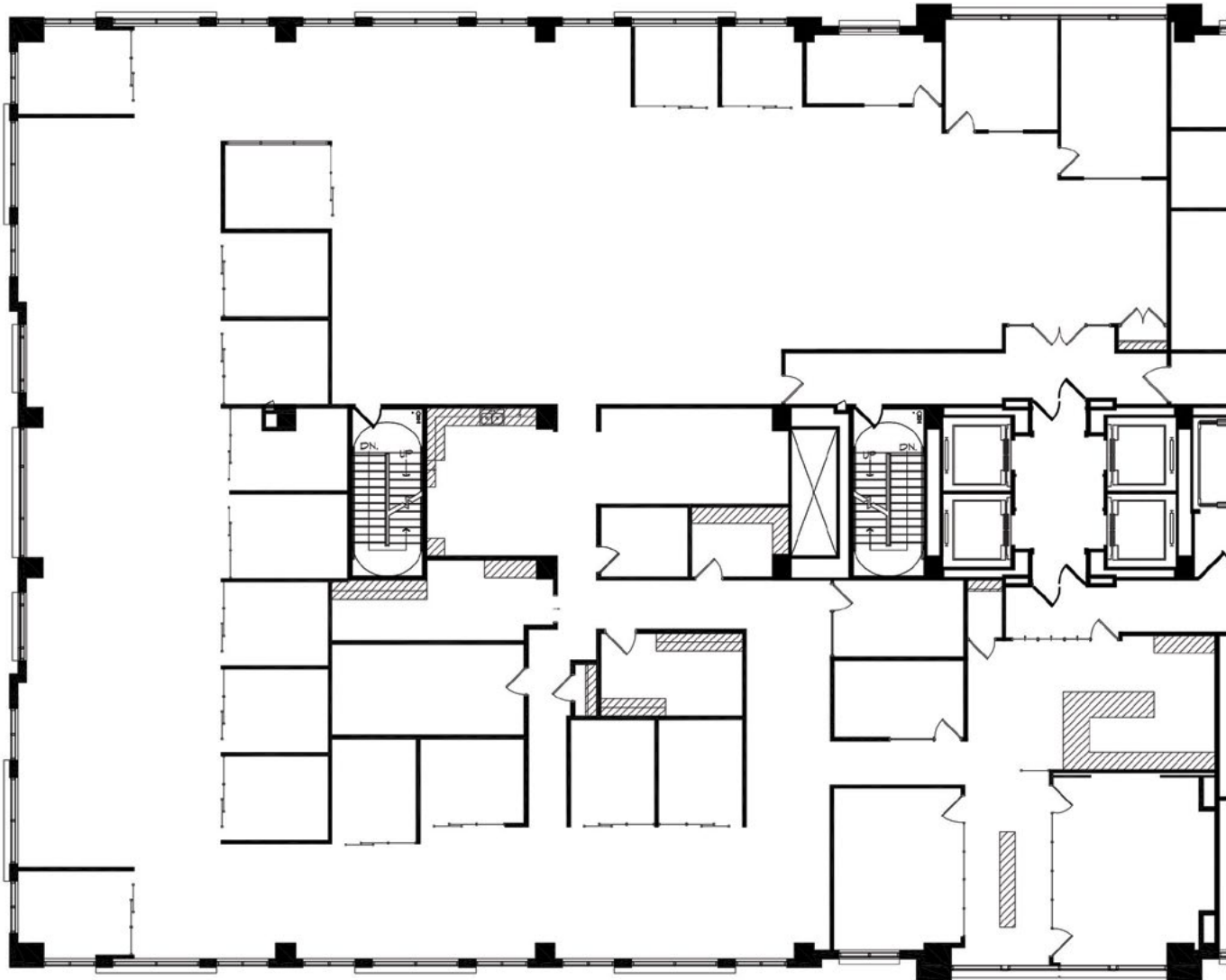
3601 West 78th Street

Suite 450 | 14,297 sf



CENTENNIAL LAKES IV
7650 Edinborough Way

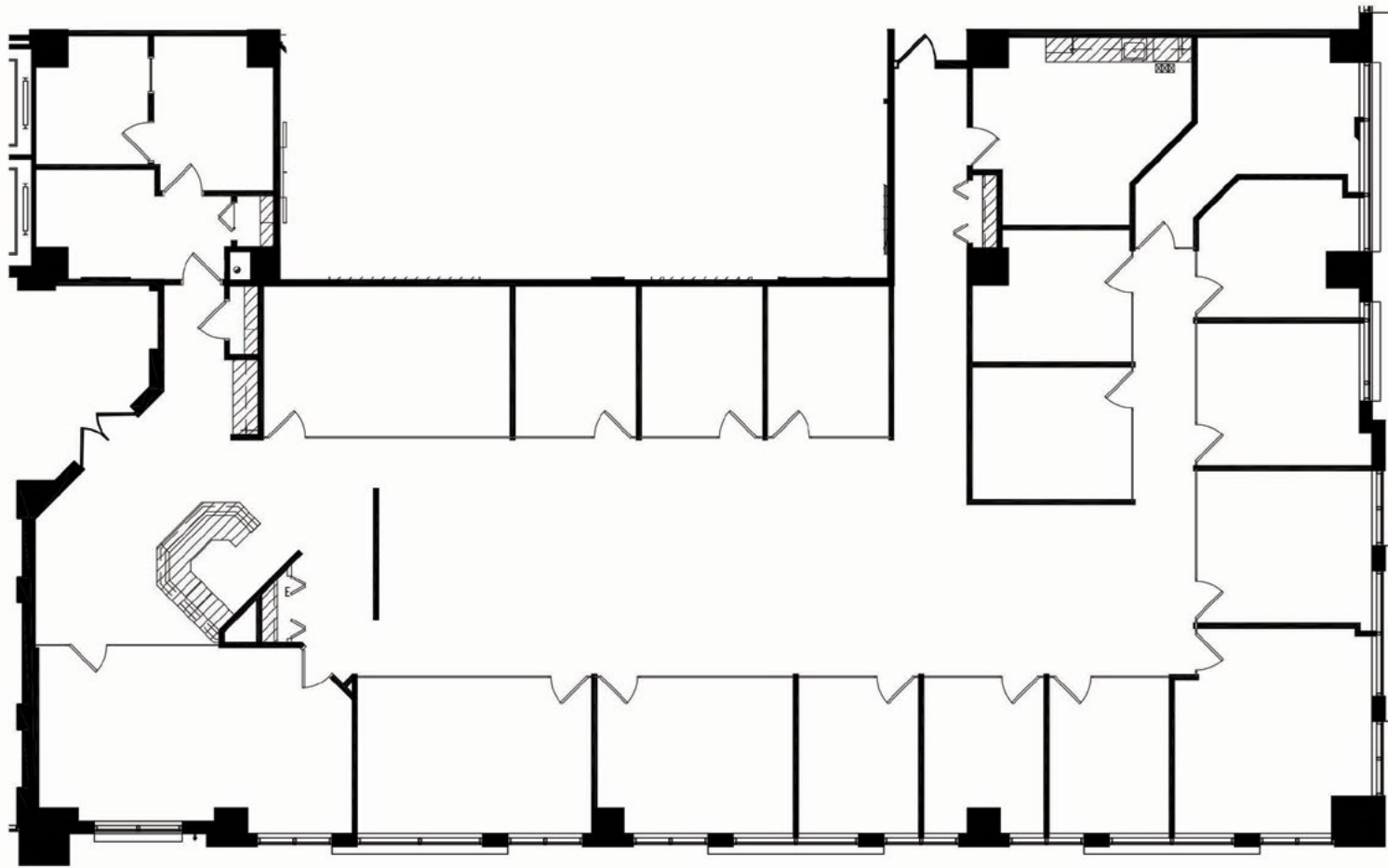
Suite 500 | 14,780 sf



KEY PLAN - 5TH FLOOR

CENTENNIAL LAKES V
3600 Minnesota Drive

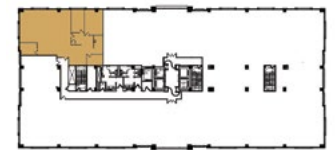
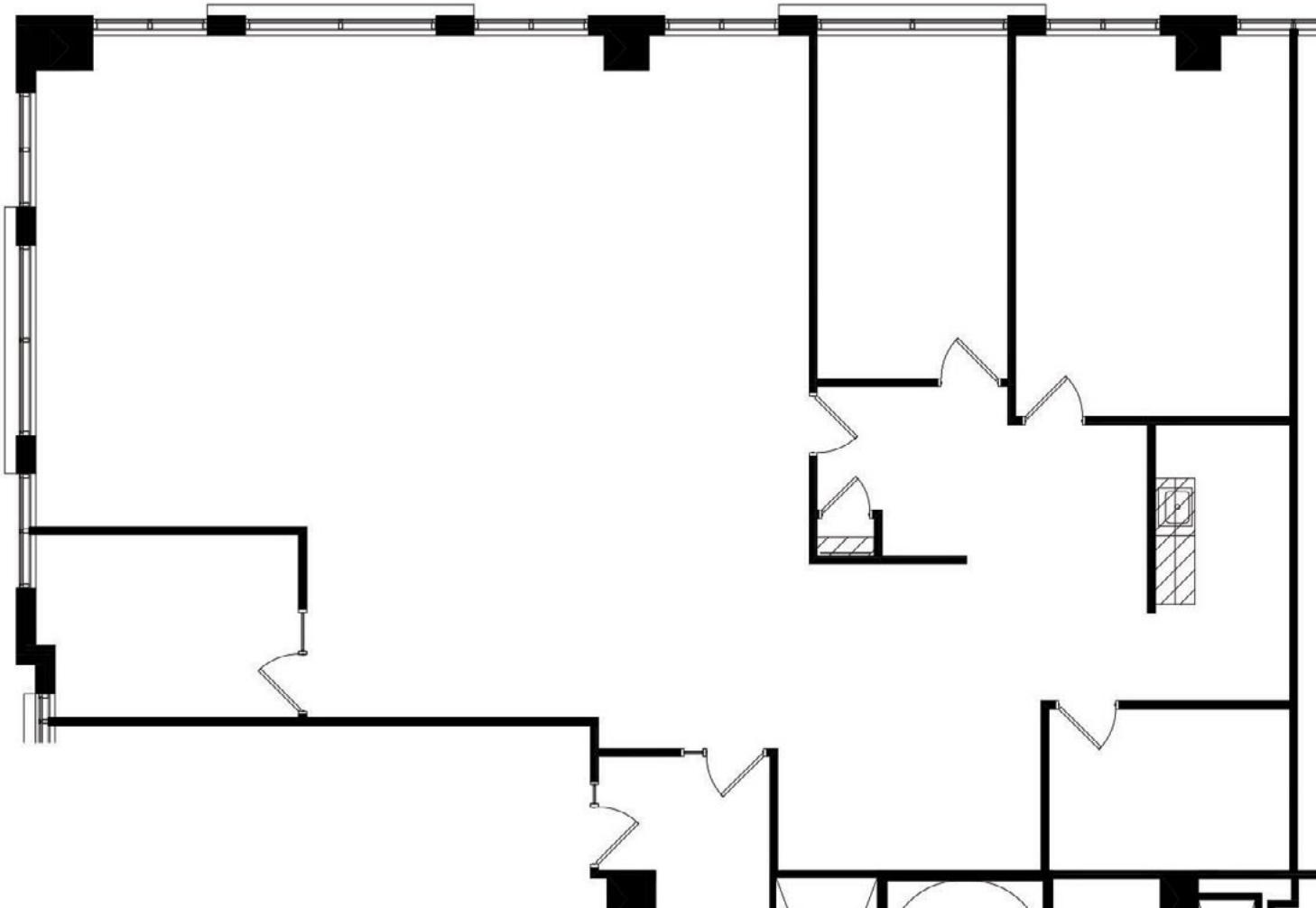
Suite 70 | 6,623 sf



KEY PLAN - LOWER LEVEL

CENTENNIAL LAKES V
3600 Minnesota Drive

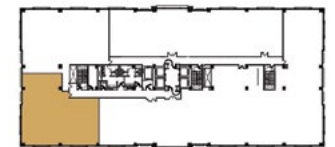
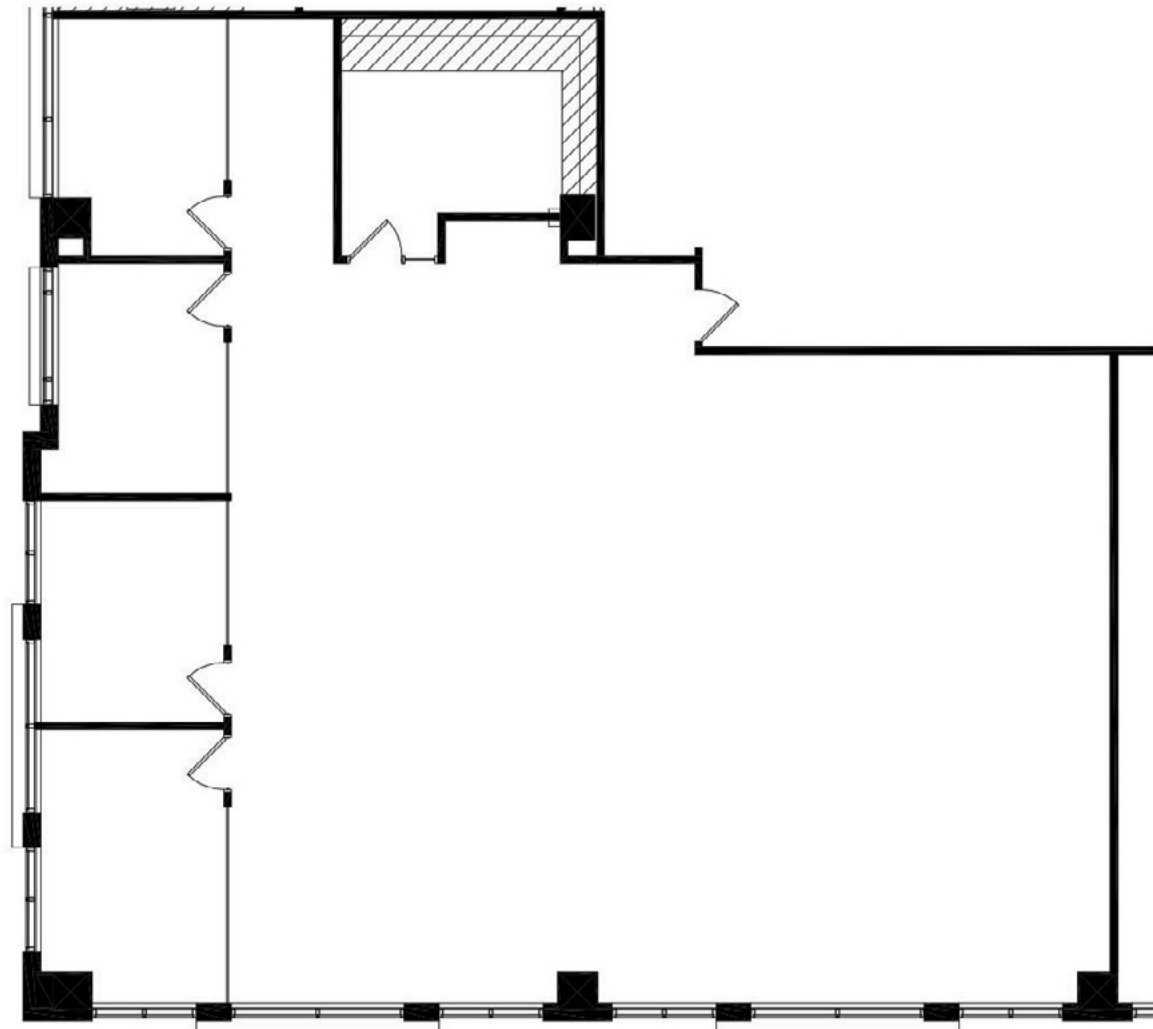
Suite 350 | 3,137 sf



KEY PLAN - 3RD FLOOR

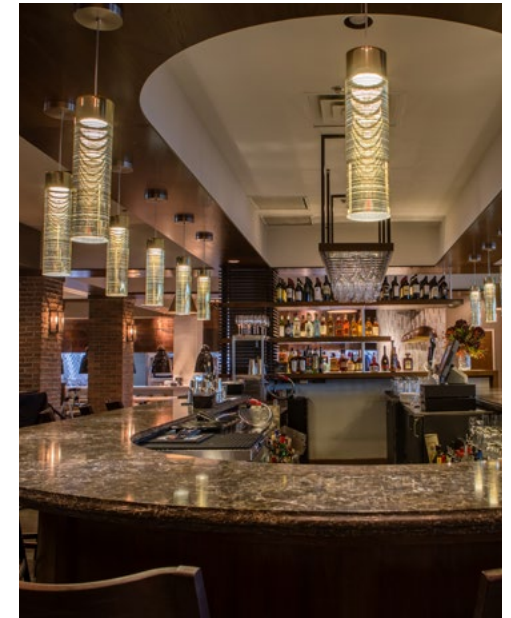
CENTENNIAL LAKES V
3600 Minnesota Drive

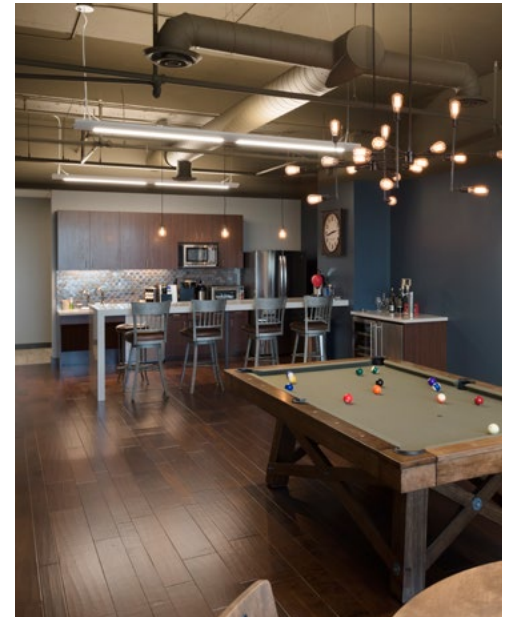
Suite 515 | 3,540 sf



KEY PLAN - 5TH FLOOR









EDINA, MINNESOTA - 494 AND FRANCE AVENUE

centenniallakes.com

Centennial Lakes Office Park
7650 Edinborough Way | Suite 575 | Edina, MN 55435

Bob Revoir | 952-893-7586
bob.revoir@cushwake.com

Dan Wicker | 952-893-8254
dan.wicker@cushwake.com