



COVENTRY MALL – RETAIL SPACE AVAILABLE

351 W. SCHUYLKILL ROAD, POTTSTOWN, PA 19465



PLYMOUTH GREENE OFFICE CAMPUS
1000 Germantown Pike, Suite A-2
Plymouth Meeting, PA 19462

FOR MORE INFORMATION: 610-272-6500
www.pennmarkproperties.com

COVENTRY MALL – RETAIL SPACE AVAILABLE

351 W. SCHUYLKILL ROAD, POTTSTOWN, PA 19465

Amenities

- 30,180 SF
- Exterior & Mall Entrances
- 2 ADA Restrooms
- Visible from Rt. 100 & Rt. 724
- Easily Accessible from Rt. 422

Leasing

Robert Sichelstiel

Sichelstiel@pennmarkproperties.com

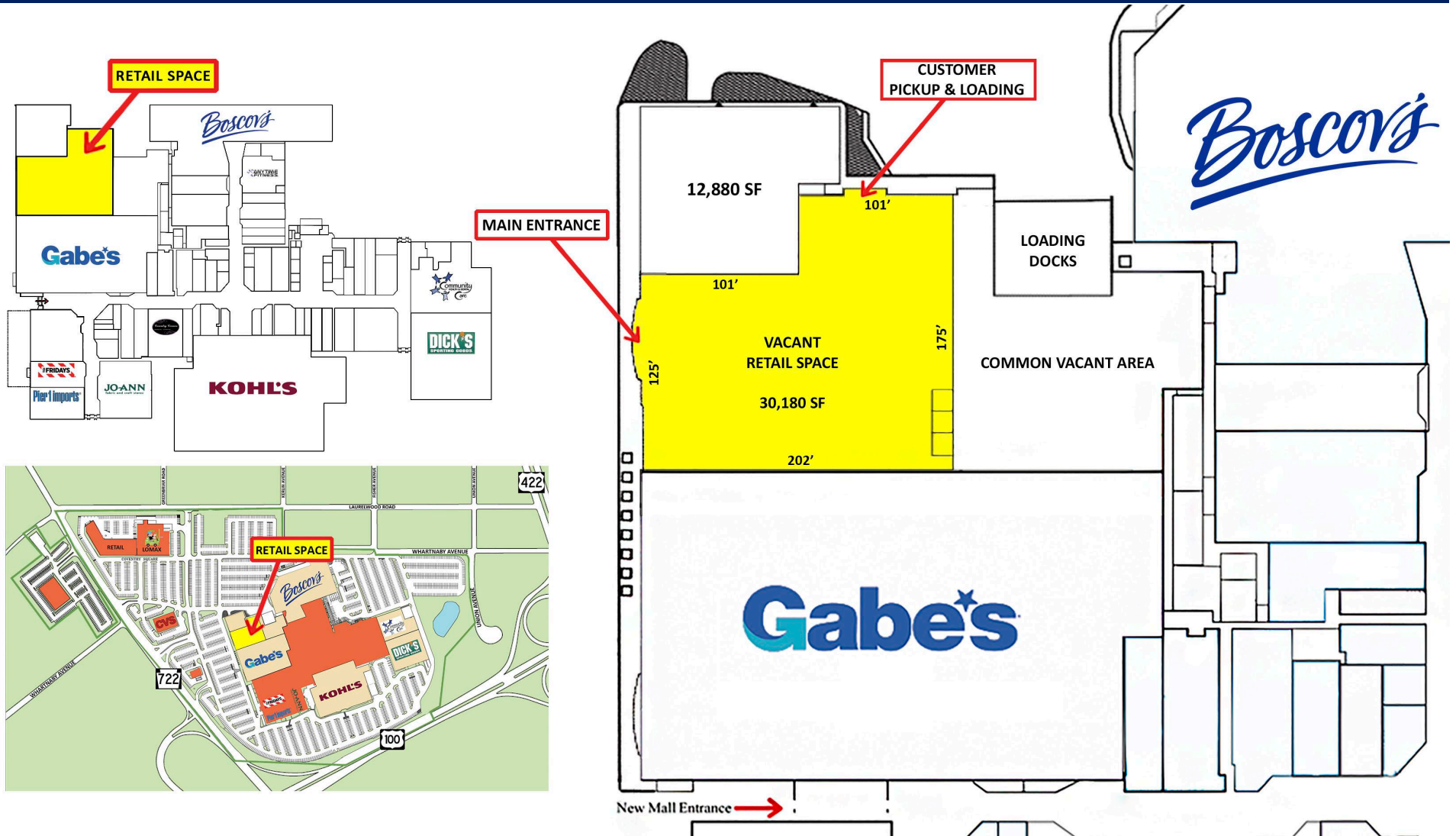
Phone: 484-686-8302



FOR MORE INFORMATION: 610-272-6500
www.pennmarkproperties.com

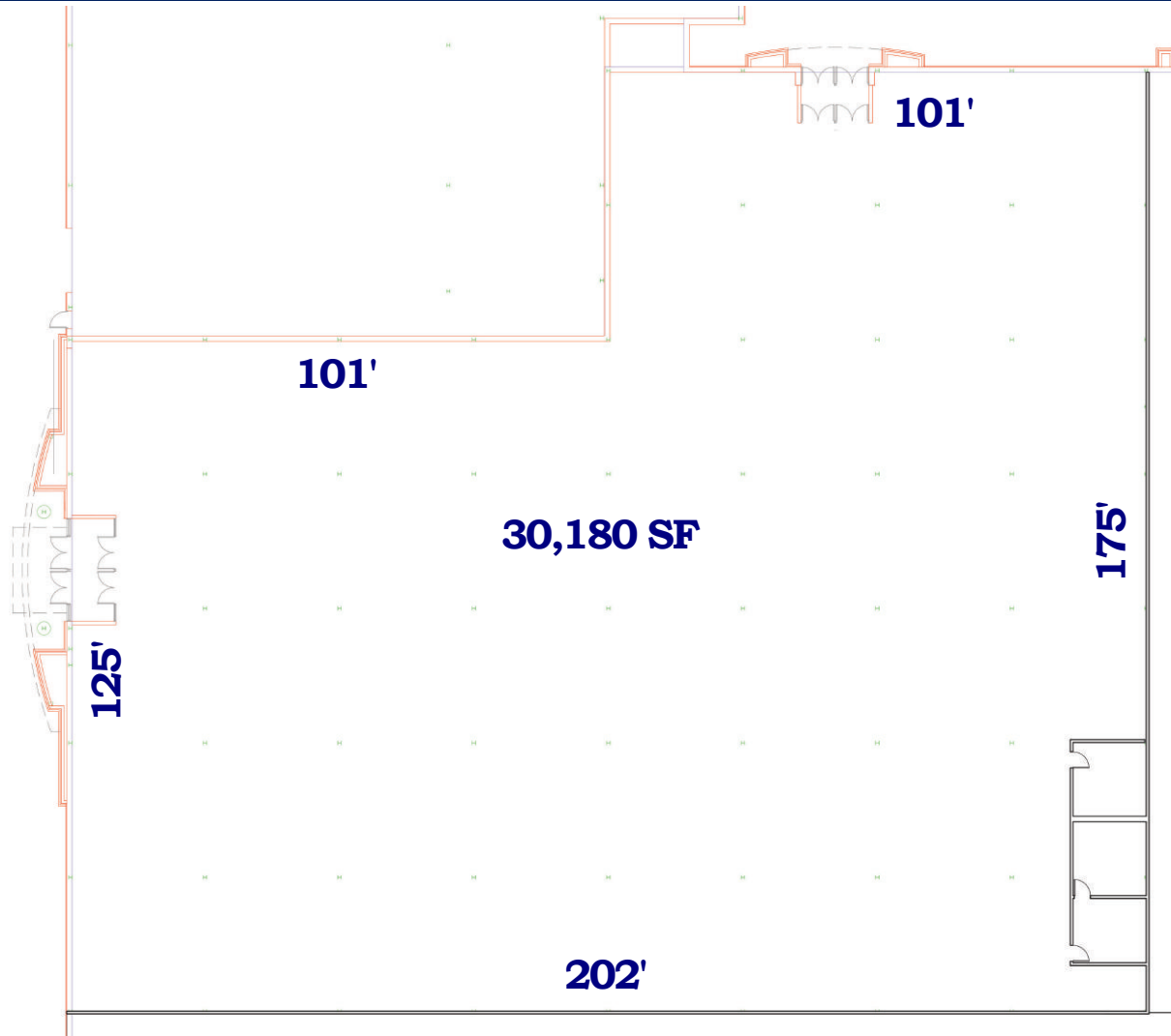
COVENTRY MALL – RETAIL SPACE AVAILABLE

351 W. SCHUYLKILL ROAD, POTTSTOWN, PA 19465



FOR MORE INFORMATION: 610-272-6500
www.pennmarkproperties.com

FLOOR PLAN

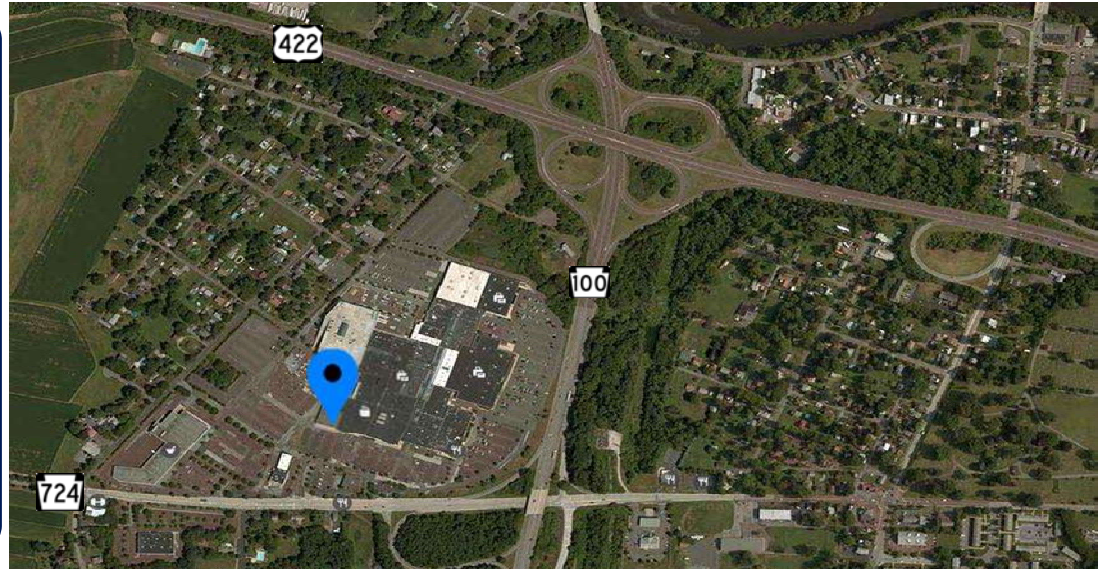


FOR MORE INFORMATION: 610-272-6500
www.pennmarkproperties.com

COVENTRY MALL – RETAIL SPACE AVAILABLE
351 W. SCHUYLKILL ROAD, POTTSTOWN, PA 19465

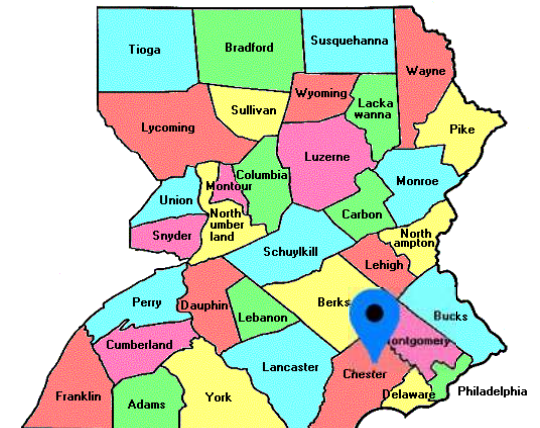
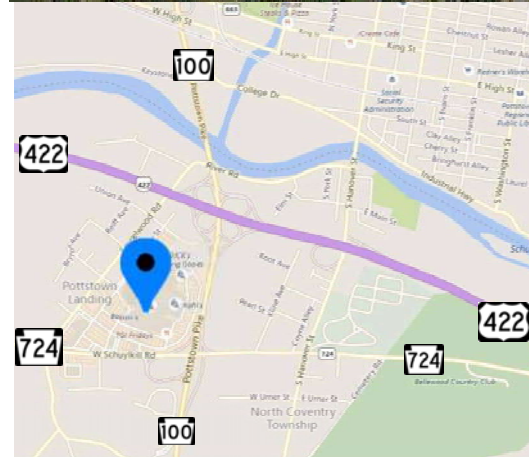
Demographics

	<u>7 mi</u>	<u>10 mi</u>
Population	123,985	205,721
HH Income (\$)	69,078	72,790
Total Businesses	5,494	8,482
Daytime Employment	46,665	72,477



Traffic Counts

**31,120
Vehicles
per Day**



FOR MORE INFORMATION: 610-272-6500
www.pennmarkproperties.com

Property Overview

Coventry Mall is located in Pottstown, Pennsylvania, and home to many national retailers including Books-A-Million, Christopher & Banks, Dick's Sporting Goods, Bath & Body Works, Kohl's, Boscov's, Pier 1 Imports, T.G.I. Friday's and Victoria's Secret, to name a few.

Property Summary

Total Space:	802,275 SF
Lease Rate:	Negotiable
Property Type:	Retail- Mall
Market:	Chester County
Sub Market:	North Coventry Township - Pottstown
Traffic Count:	31,120 VPD

Property Highlights

- Nearby Route 422 interchange with Routes 100 & 724
- 802,275 Total Square Feet
- 31,120 Vehicles per Day
- Signalized Intersection

FOR MORE INFORMATION: 610-272-6500
www.pennmarkproperties.com



Plymouth Greene Office Campus
1000 Germantown Pk, Suite A2
Plymouth Meeting, PA 19462

ROBERT SICHELSTIEL
CFO

610-272-6500 X 125
LEASING@PENNMARKEPROPERTIES.COM

THE PENNMARK PROCESS

Penmark is a full service Commercial Real Estate Development and Management Company with a portfolio of approximately two million square feet of retail, office and flex space located throughout Pennsylvania, New Jersey and Ohio. Penmark is a rapidly growing company that possesses the in-house capabilities to handle every phase of the development process. Our integrated approach results in satisfied customers and fuels our growth.

Our team is capable of handling every phase of project development including:

Site Selection • Land Acquisition
Project Approval Process
Financing
Construction
Leasing
Management
Acquisitions

Our experienced team of experts provides the highest level of property management in: Site Selection and Land Acquisition and then completes the Project Approval Process through the various State and Municipal agencies.

Put the power of The PENNMARK Process to work for you!

PLYMOUTH GREENE OFFICE CAMPUS
1000 Germantown Pike, Suite A-2
Plymouth Meeting, PA 19462

FOR MORE INFORMATION: 610-272-6500
www.pennmarkproperties.com