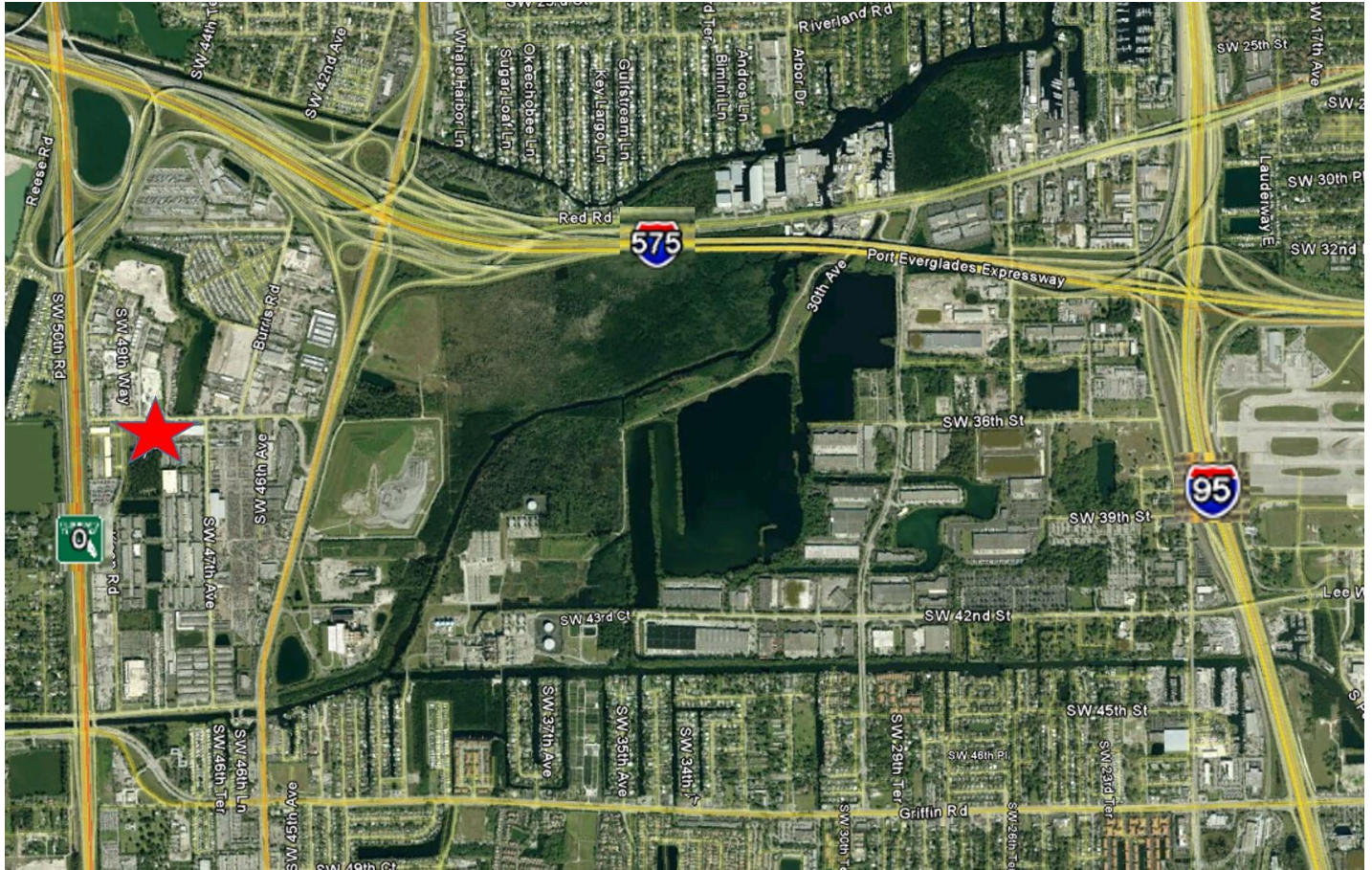


# 10 Acre Site in Broward County available for license

3898 Kean Rd, Davie FL 33314



## LOCATION

Broward County, Florida

## SIZE

Approximately 10 acres

## ZONING

M-2 (Medium Industrial)

## RENT

Negotiable

## TERM

Up to 5 years with flexibility to early terminate

## PROPERTY HIGHLIGHTS

- Prime location; proximity to Interstates 95, 595, Florida Turnpike, Sawgrass Expressway, and Federal Highway
- Less than 3 miles from Fort Lauderdale - Hollywood International Airport
- Less than 6 miles from Port Everglades
- Brand new improvements! In the process of paving and adding drainage, lighting and fencing
- Ideal for vehicle storage
- Rare opportunity for space that is located in a densely occupied industrial area

**Inquiries:** Florida Power & Light Company (561) 694-3188 or [cre-mailbox@fpl.com](mailto:cre-mailbox@fpl.com)





# LAND FOR LICENSE

## SITE DETAILS

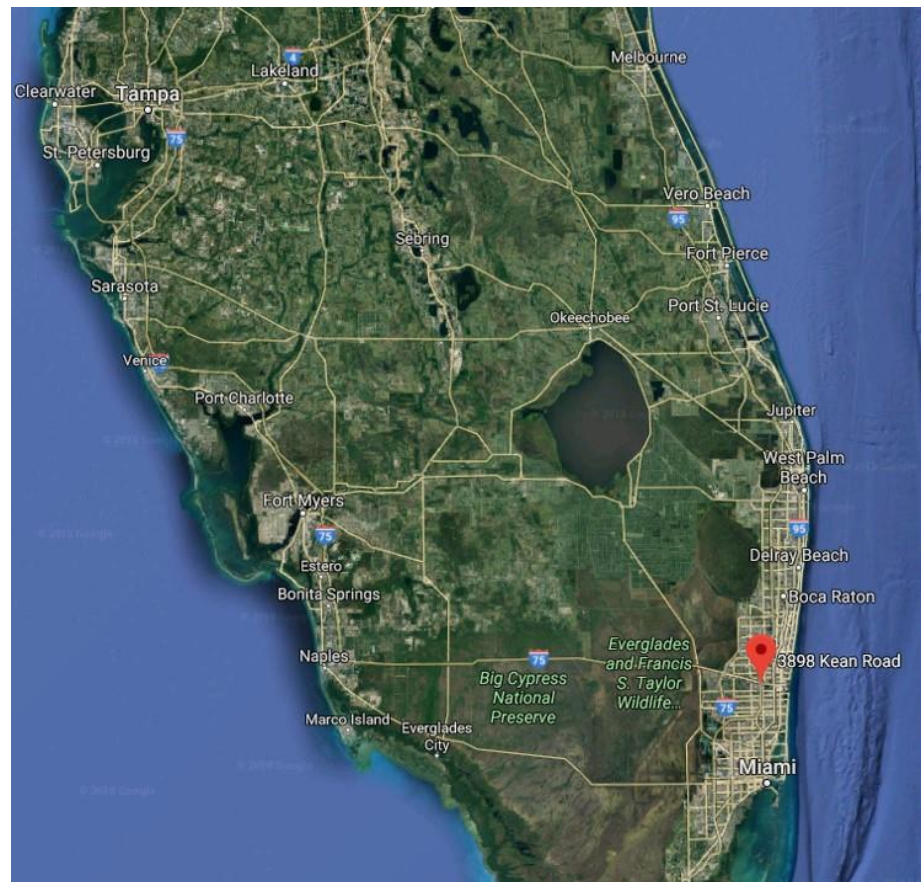
Parcel ID(s) # 504125310020,  
504125310010.

Currently in site development process. Expected to have more than 400,000 square feet of paved surface.

Opportunity for tenant to participate in design.

Tenant can secure rights to the property immediately

**Inquiries: Florida Power and Light Company**  
**561-694-3188 or**  
**cre-mailbox@fpl.com**



**Disclaimers:** Brokers and agents are welcome to inquire for, submit offers and bids on behalf of, and otherwise represent parties who express an interest in renting FPL owned real property. However, FPL will not hire, enter into a brokerage agreement with, or in any way compensate any broker or agent for any effort or activity related to marketing, offering to rent, agreement negotiation or agreement execution for occupancy or use of the real property described by this or any other advertisement, offering or communication. The information contained herein has been gathered from various sources and is intended to be reliable, but each interested party should independently verify accuracy of all information.