

Prime HUB Office Space

391 East 149th Street

Bronx, NY 10455



Size

650 –15,000 Square Feet

Rent

Upon Request

Building Features

- Private Lobby
- ADA Accessibility
- 3 Newly renovated Elevators
- Front Desk Security
- Move in Condition
- Full floors available
- Wraparound Windows allow for plenty of natural light

Notes

- Located at one of the busiest intersections in the Bronx, the corner of 149th Street and 3rd Avenue
- Pedestrian Count- 23,697 daily
- ***BROKERS PROTECTED***

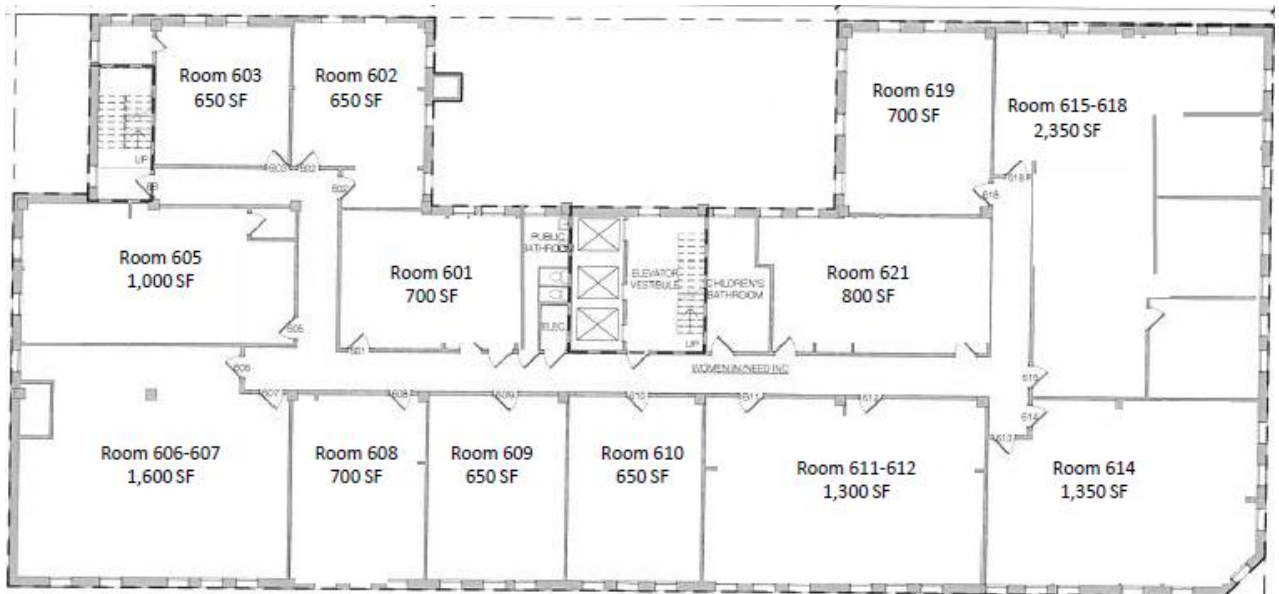
Transportation

Buses

- Bx1/2 bus- 38,600 riders/day
- Bx55 bus- 13,400 riders/day
- Bx15 bus- 12,000 riders/day
- Bx4/4A bus- 15,300 riders/day

Subway

- 3rd Avenue – 149th Street Station
- 2 and 5 Trains
- 25,161 weekday riders
- 7,763,151 riders in 2014



For More Information, Please Contact:

Isadore Betesh: Isadore@MilestoneEq.com 917-882-5495
 Marc Betesh: Marc@MilestoneEq.com 917-882-5690



MILESTONE
EQUITIES