

## Fairway Center

14220-14240  
Interurban Avenue South  
Tukwila, WA

### High Quality Office Space

#### AVAILABLE SPACE

| RSF   | Floor | Available |
|-------|-------|-----------|
| 3,371 | 1     | Now       |
| 1,815 | 1     | Now       |
| 1,642 | 2     | Now       |

Excellent location provides access to I-405 and I-5 and is 5 minutes to SeaTac Airport

Metro bus stop adjacent to property and minutes to the Link Light Rail station on International Blvd

Fitness center / showers onsite

Interurban Trail access

Abundant free parking

\$24.00 PSF, full service



### Location



### Contact

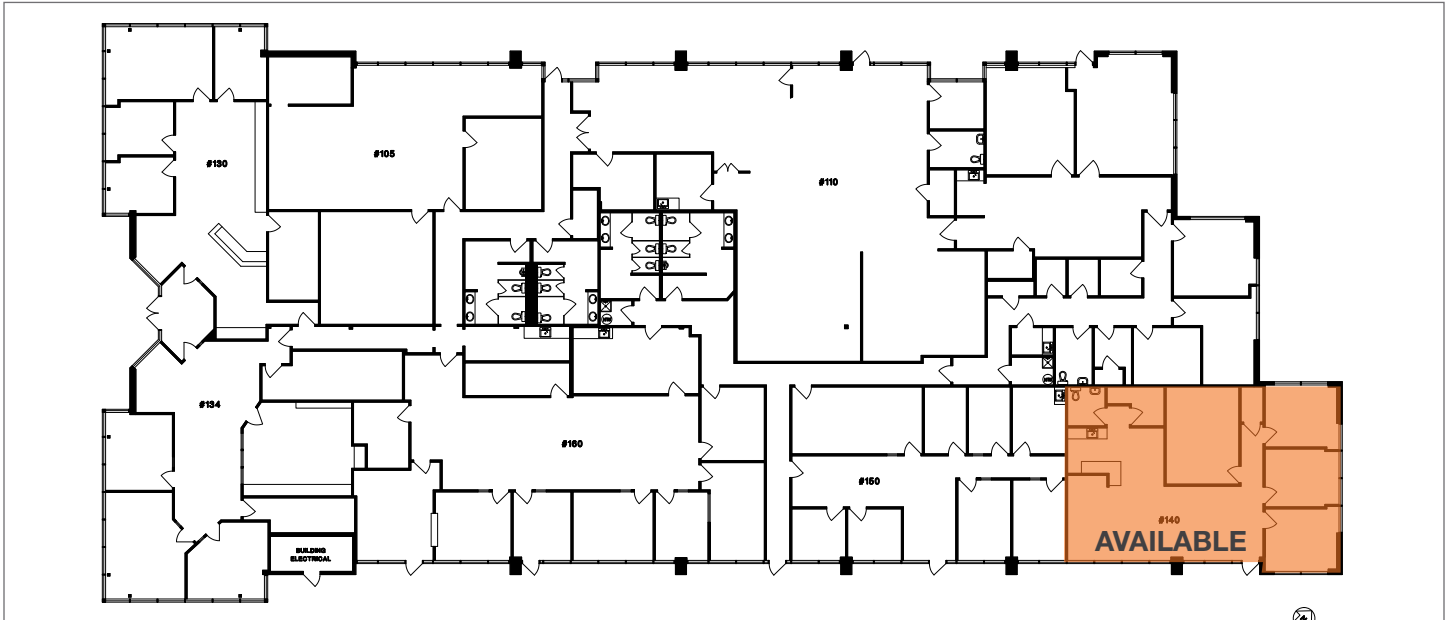
**Brian Clapp**  
206.248.7316  
bclapp@kiddermathews.com

**Matt Wood, SIOR**  
206.248.7306  
mwood@kiddermathews.com

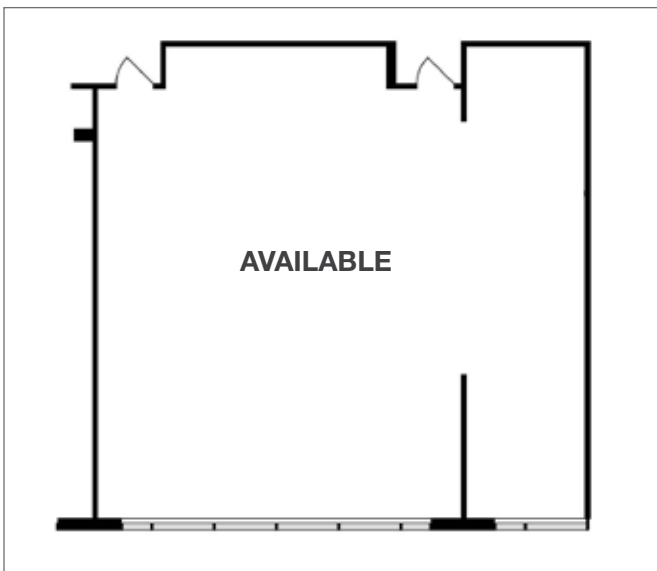
**Todd Battison**  
206.296.9621  
toddb@kiddermathews.com

## Fairway Center

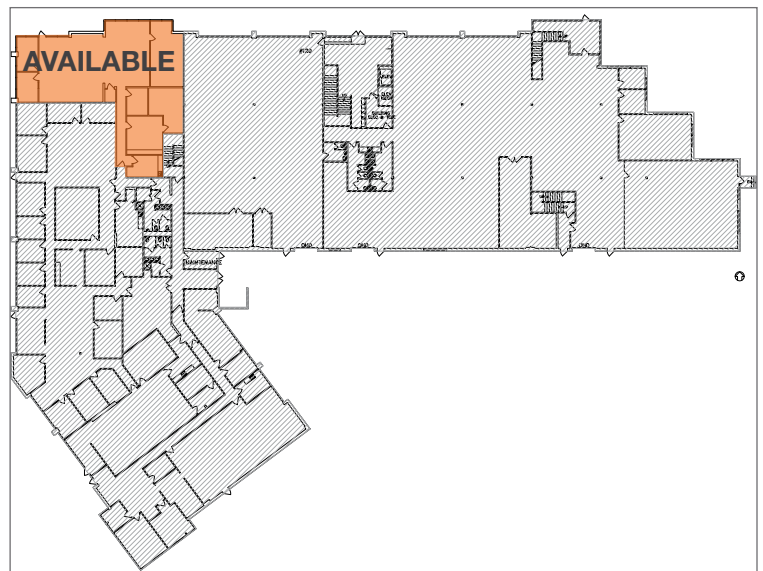
### Building A, Suite A140 - 1,815 RSF



### Building B, Suite B-250 - 1,642 RSF



### Building B, Suite B-132 - 3,371 RSF



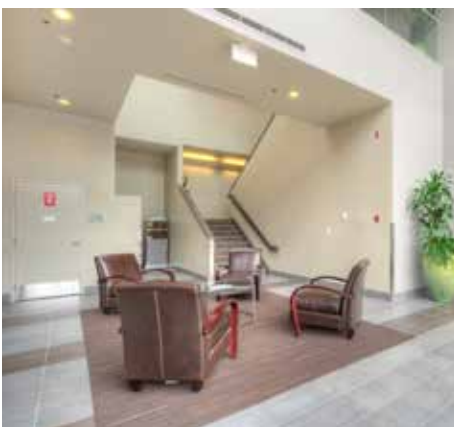
## Contact

**Brian Clapp**  
206.248.7316  
bclapp@kiddermathews.com

**Matt Wood, SIOR**  
206.248.7306  
mwood@kiddermathews.com

**Todd Battison**  
206.296.9621  
toddb@kiddermathews.com

## Fairway Center



## Contact

**Brian Clapp**  
206.248.7316  
bclapp@kiddermathews.com

**Matt Wood, SIOR**  
206.248.7306  
mwood@kiddermathews.com

**Todd Battison**  
206.296.9621  
toddb@kiddermathews.com