

755 NJ-17 South
RAMSEY, NJ

RIPCO
REAL ESTATE



.60 Acre Pad Site Available

Possible Drive-Thru

ADDRESS	755 NJ-17 South Ramsey, NJ 07446 Bergen County
Size	.60 Acres
Taxes	\$32,624.59 (2017)
Zoning	B-3: Highway Business District
COMMENTS	<ul style="list-style-type: none"> • Prime retail pad site • Ground lease or build to suit • Over 200' of frontage on Route 17 • 214,000 vehicles on Route 17 with easy turn-arounds
AREA TENANTS	Ramsey Outdoor, Kia Motors, Verizon, Dunkin Donuts, Club Pilates, 24 Hour Fitness, Retro Fitness, Uncle Giuseppe's, Exxon, Mavis discount Tire, McDonald's, Houlihan's

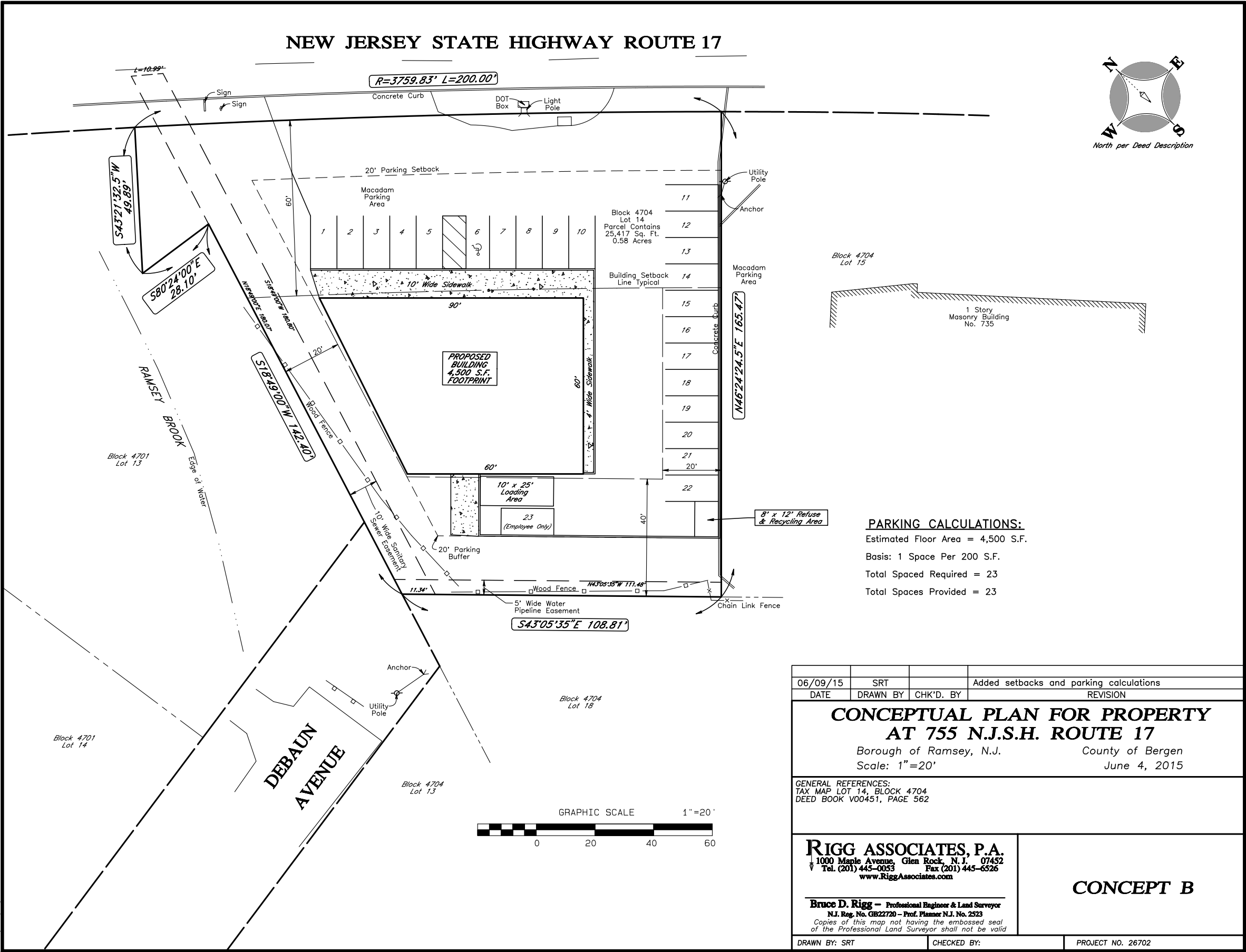


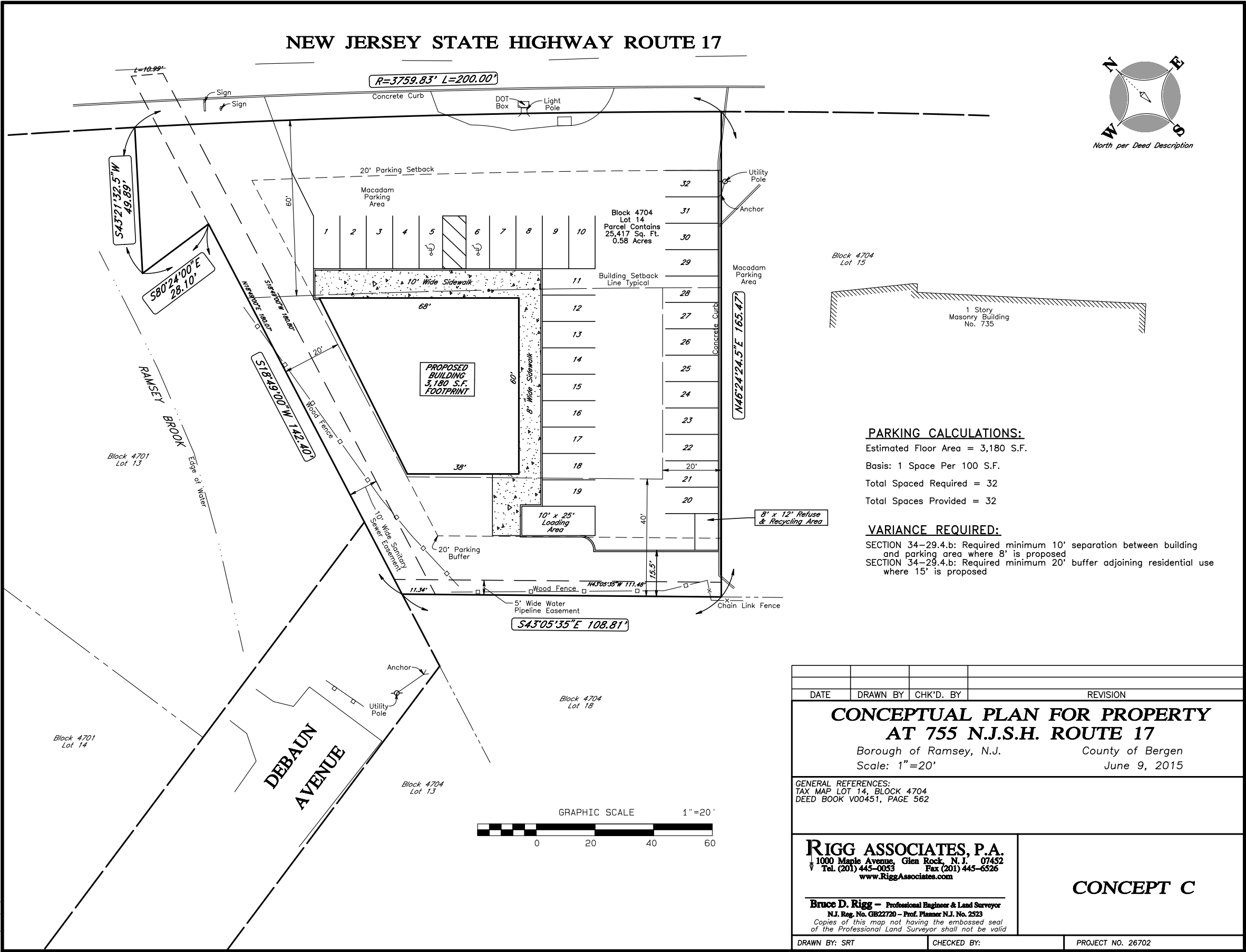




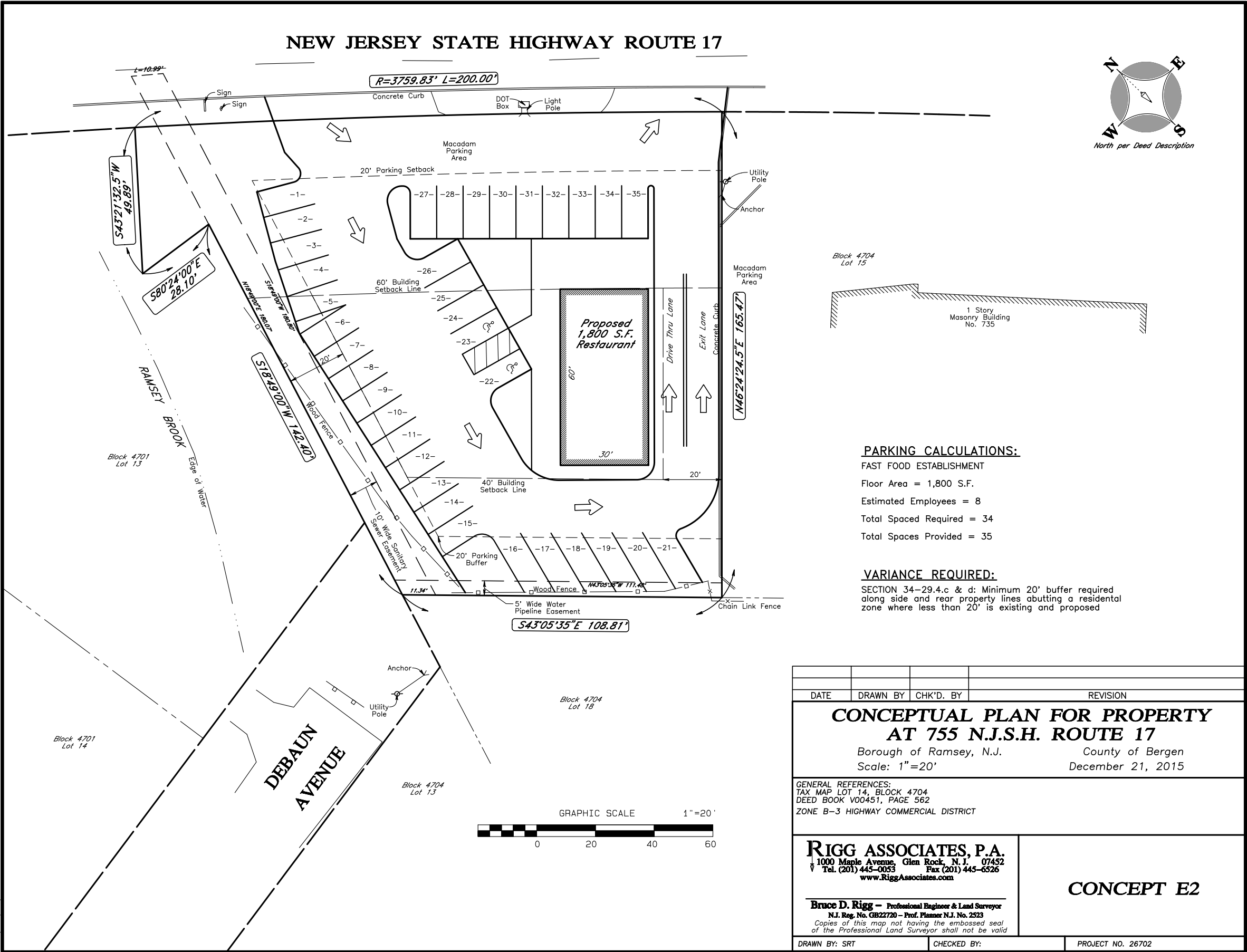


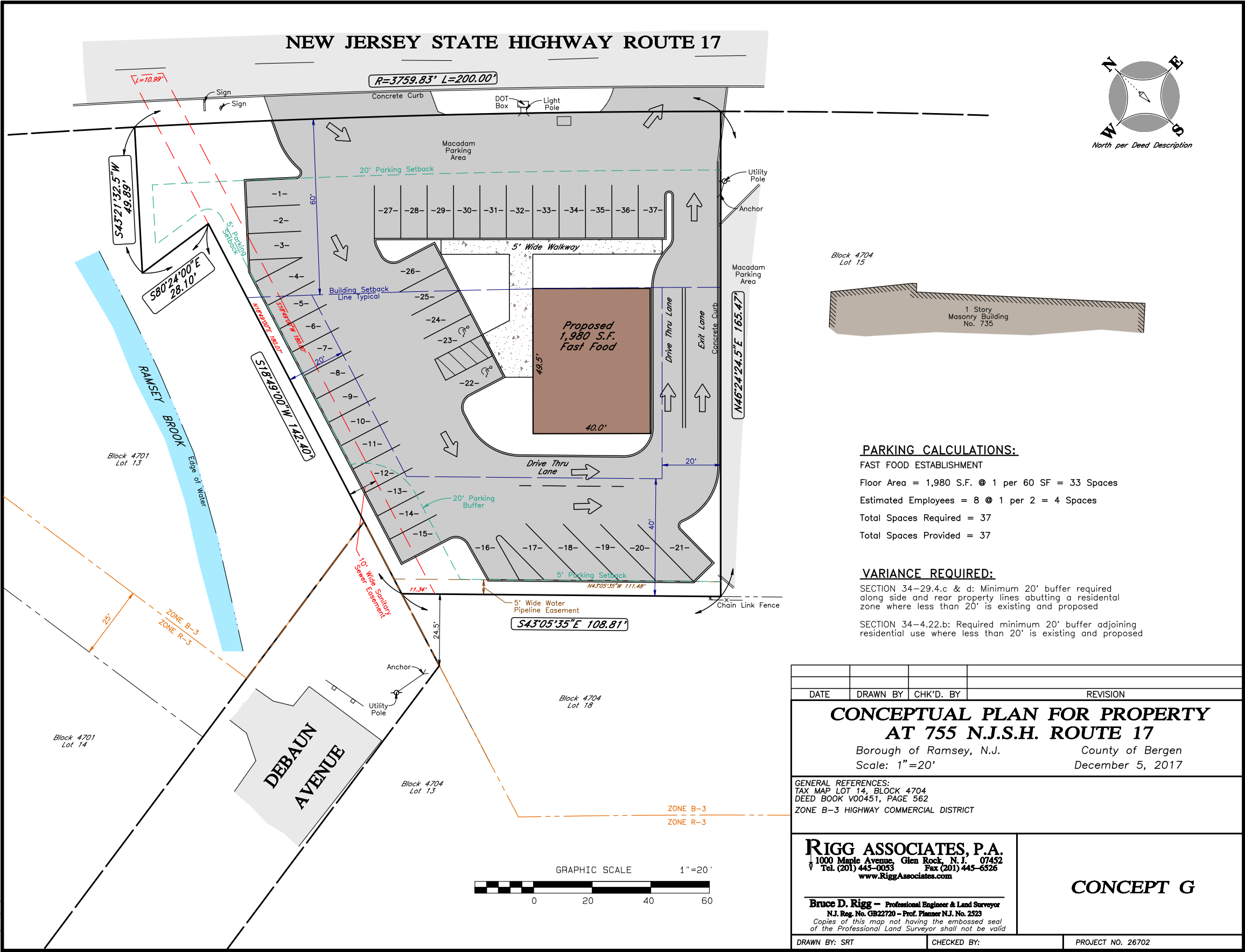


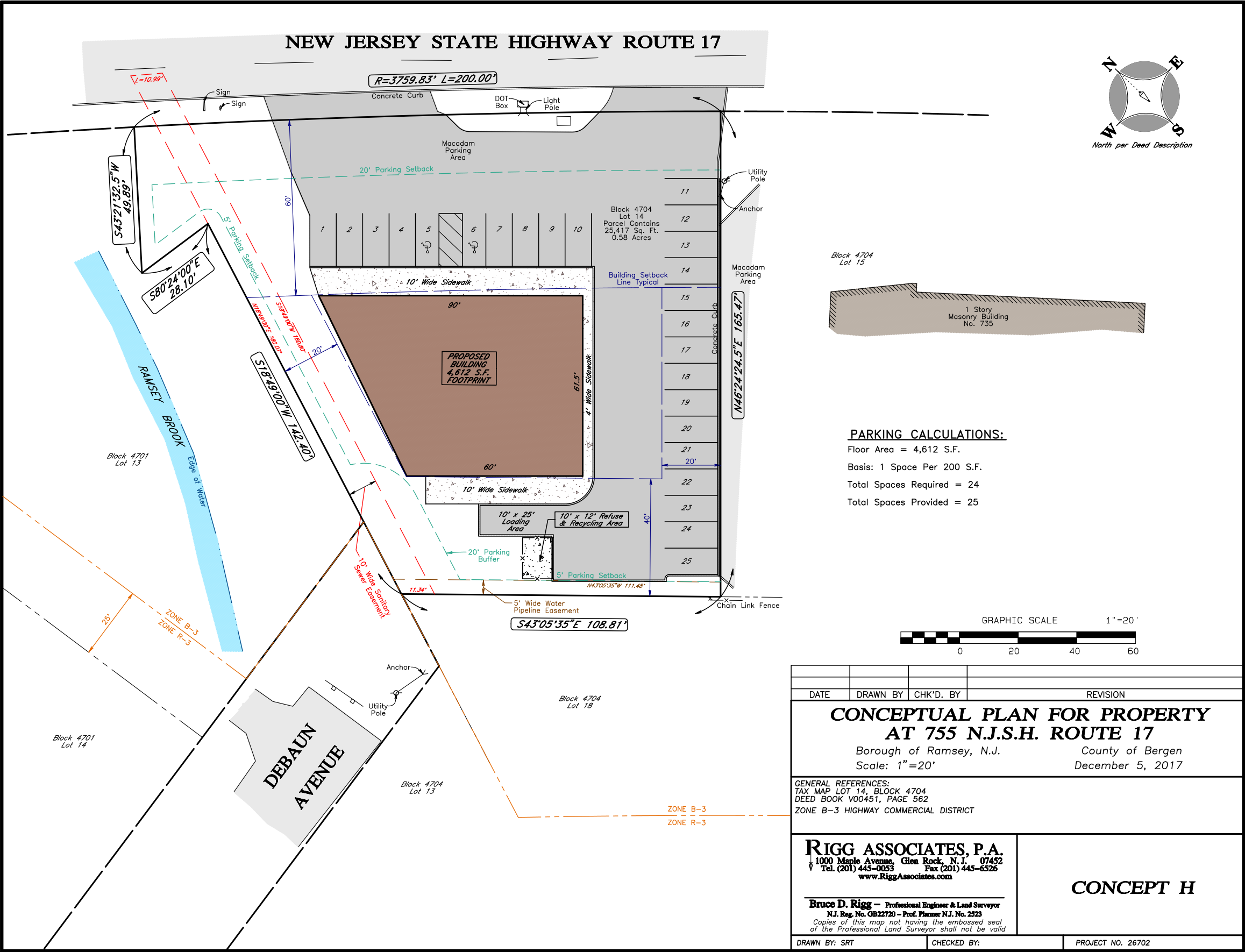














Pleasantville

- 64% are college educated
- Not cost-conscious, these consumers willing to spend more for quality and brands they like
- Prefer fashion that is classic and timeless as opposed to trendy
- Families own older, single-family homes and maintain their standard of living with dual incomes
- Older homes require upkeep; home improvement and remodeling projects are a priority



Wegmans



Home Depot



Banana Republic



Lexus



pensions & social security



education



housing

top 3 budget allocations



\$85,000

median household income



Office & Administrative Support
top occupation



- They prefer upscale salons, spas, and fitness centers for their personal well-being and shop at high-end retailers for their personal effects
- Residents fill their weekends and evenings with opera, classical music concerts, charity dinners, and shopping
- These are the nation’s wealthiest consumers



Bloomingdales



Mercedes Benz



Luxury Vacation



pensions & social security



education



entertainment & recreation

top 3 budget allocations



\$157,000

median household income



Management
top occupation



Savvy Suburbanites

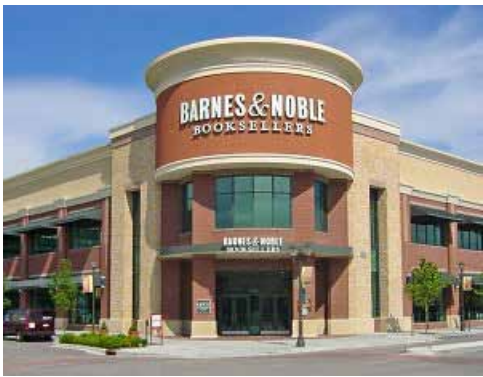
- Savvy Suburbanites residents are well educated, well read, and well capitalized
- Gardening and home remodeling are priorities, usually DIY. Riding mowers and power tools are popular, although they also hire contractors for the heavy lifting
- Physically fit, residents actively pursue a number of sports, from skiing to golf, and invest heavily in sports gear and exercise equipment



Home Depot



Dick's Sporting Goods



Barnes & Noble



Kings Supermarket



pensions & social security



education



entertainment & recreation

top 3 budget allocations



\$104,000
median household income



Management
top occupation

Demographic Report

755 NJ-17 South
RAMSEY, NEW JERSEY

	1 mile radius	3 mile radius	5 mile radius
Population			
2017 Estimated Population	8,333	57,814	172,038
2022 Projected Population	8,687	60,182	179,065
2010 Census Population	7,952	55,211	163,832
2000 Census Population	7,665	54,681	154,840
2017 Median Age	41.5	43.4	39.9
Households			
2017 Estimated Households	3,202	21,540	57,583
2022 Projected Households	3,314	22,264	59,730
2010 Census Households	3,098	20,926	56,195
2000 Census Households	2,964	20,422	53,608
Projected Annual Growth 2017 to 2022	0.7%	0.7%	0.6%
Historical Annual Growth 2000 to 2017	0.5%	0.3%	0.5%
Race			
2017 Estimated White	81.6%	83.0%	82.0%
2017 Estimated Black or African American	2.2%	2.4%	5.5%
2017 Estimated Asian & Pacific Islander	12.6%	11.3%	8.3%
2017 Estimated American Indian & Native Alaskan	0.1%	0.1%	0.2%
2017 Estimated Other Races	3.5%	3.2%	4.0%
2017 Estimated Hispanic	8.4%	8.0%	9.5%
Income			
2017 Estimated Average Household Income	\$181,769	\$181,410	\$161,523
2017 Estimated Median Household Income	\$148,913	\$140,518	\$125,602
2017 Estimated Per Capita Income	\$69,864	\$67,617	\$54,422
Education (Age 25+)			
2017 High School Graduate	15.8%	16.2%	19.4%
2017 Some College	12.4%	13.1%	13.9%
2017 Associates Degree Only	5.2%	6.0%	6.4%
2017 Bachelors Degree Only	40.3%	34.8%	31.2%
2017 Graduate Degree	24.6%	26.8%	23.2%
Business/Daytime			
2017 Estimated Number of Businesses	933	3,304	9,193
2017 Estimated Total Number of Employees	9,330	41,471	101,400

EXCLUSIVE REPRESENTATION

RIPCO

REAL ESTATE

Matt Grundy
mgrundy@ripconj.com
201.777.2300

www.ripconj.com

125 Chubb Avenue
Suite 150 S
Lyndhurst, NJ 07071

