

# SOUTH JORDAN PLAZA

10464 SOUTH REDWOOD ROAD • SOUTH JORDAN • UTAH • 84095



# SOUTH JORDAN PLAZA

10464 SOUTH REDWOOD ROAD • SOUTH JORDAN • UTAH • 84095



## FOR LEASE

### PROPERTY SPECS

- 3,251 SF Available
- 1,488 SF Available
- \$15.00 PSF NNN
- Traffic Counts:  
South Jordan Parkway: 12,960 cars/day  
Redwood Road: 23,265 cars/day

DEMOGRAPHICS	1 MILE	3 MILES	5 MILES
POPULATION			
2016 ESTIMATED POPULATION	9,946	93,477	281,264
2021 PROJECTED POPULATION	10,878	103,032	306,794
HOUSEHOLDS			
2016 ESTIMATED HOUSEHOLDS	3,219	27,915	84,414
2021 PROJECTED HOUSEHOLDS	3,518	30,722	91,950
2016 EST. AVERAGE HH INCOME	\$120,401	\$102,075	\$89,244
2016 EST. MEDIAN HH INCOME	\$97,276	\$84,549	\$75,081
2016 EST. PER CAPITA INCOME	\$37,807	\$30,484	\$26,887

CONTACT:



CONTACT:



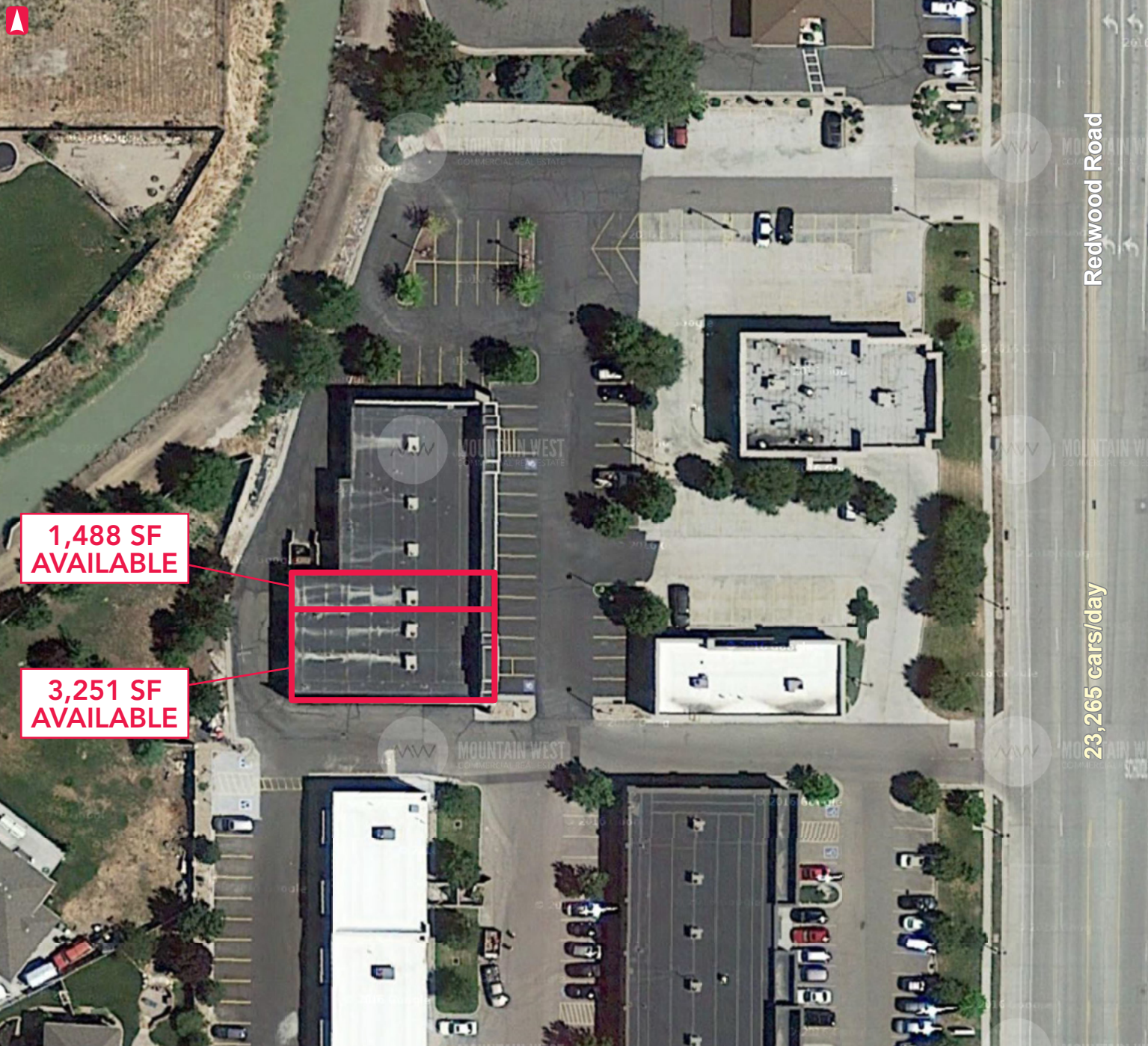
376 East 400 South, Suite 120 | Salt Lake City, Utah 84111  
Office 801.456.8800 | Fax 801.578.5500  
www.mtnwest.com



376 East 400 South, Suite 120 | Salt Lake City, Utah 84111  
Office 801.456.8800 | Fax 801.578.5500  
www.mtnwest.com

# SOUTH JORDAN PLAZA

10464 SOUTH REDWOOD ROAD • SOUTH JORDAN • UTAH • 84095



CONTACT:



376 East 400 South, Suite 120 | Salt Lake City, Utah 84111  
Office 801.456.8800 | Fax 801.578.5500  
www.mtnwest.com