

Your  
Reservation  
is Ready

# 466 AMSTERDAM AVENUE

## RESTAURANT ROW

Ground: 1,045 | Basement: 1,200 | Frontage: 20'



Join **Organic Ave**,  
**Hampton Chutney**  
and **Malin & Goetz** on  
the Upper West Side

**Stan Lindenfeld**  
Executive Managing Director  
212.776.1292  
slindenfeld@lee-associates.com

**Henry Goldfarb**  
Executive Managing Director  
212.776.1293  
hgoldfarb@lee-associates.com

**LEE & ASSOCIATES®**  
COMMERCIAL REAL ESTATE SERVICES  
**leeassociatesnyc.com**

All information supplied is from sources deemed reliable and is furnished subject to errors, omissions, modifications, removal of the listing from sale or lease, and to any listing conditions, including the rates and manner of payment of commissions for particular offerings imposed by principals or agreed by this Company, the terms of which are available to principals or duly licensed brokers. Any square footage dimensions set forth are approximate.

# 466 AMSTERDAM AVENUE

## RESTAURANT ROW

<p>Irish Pub</p> <p></p> <p></p> <p>Lavender Nails &amp; Spa</p> <p>Amsterdam Art Framing</p> <p><b>(MALIN+GOETZ)</b></p>	<p>Amsterdam Avenue</p>	<p>81st Street</p> <p></p> <p></p> <p>New York Public Library</p> <p></p> <p></p> <p></p> <p></p> <p></p> <p>82nd Street Grocery</p>
<p>organic  avenue</p> <p>KES</p> <p>steven alan</p> <p></p> <p></p> <p>Purdy Girl</p> <p></p> <p>Jooneechees</p> <p>PetHealthStore</p> <p></p> <p>Hi-Life Bar &amp; Grill</p>		<p>82nd Street</p> <p></p> <p></p> <p></p> <p><b>★ 466 Amsterdam Avenue</b></p> <p>Dave's Check Cashing</p> <p>Fred's Restaurant</p>
<p><b>AMSTERDAM DELI</b></p> <p><b>POLPETTE</b></p> <p></p> <p></p> <p>King Food</p> <p>Cindy's (Nail Salon)</p> <p></p> <p>CPW BOUTIQUE</p>		<p>83rd Street</p> <p></p> <p>Rita Berger House</p> <p>Flor de Mayo</p> <p></p> <p>Alachi Masala</p> <p></p> <p>Franklyn's Barber Shop</p> <p>Eddie's Bicycles Shop</p> <p>DARRYL'S</p> <p></p> <p>84th Street</p>

**Stan Lindenfeld**  
Executive Managing Director  
212.776.1292  
slindenfeld@lee-associates.com

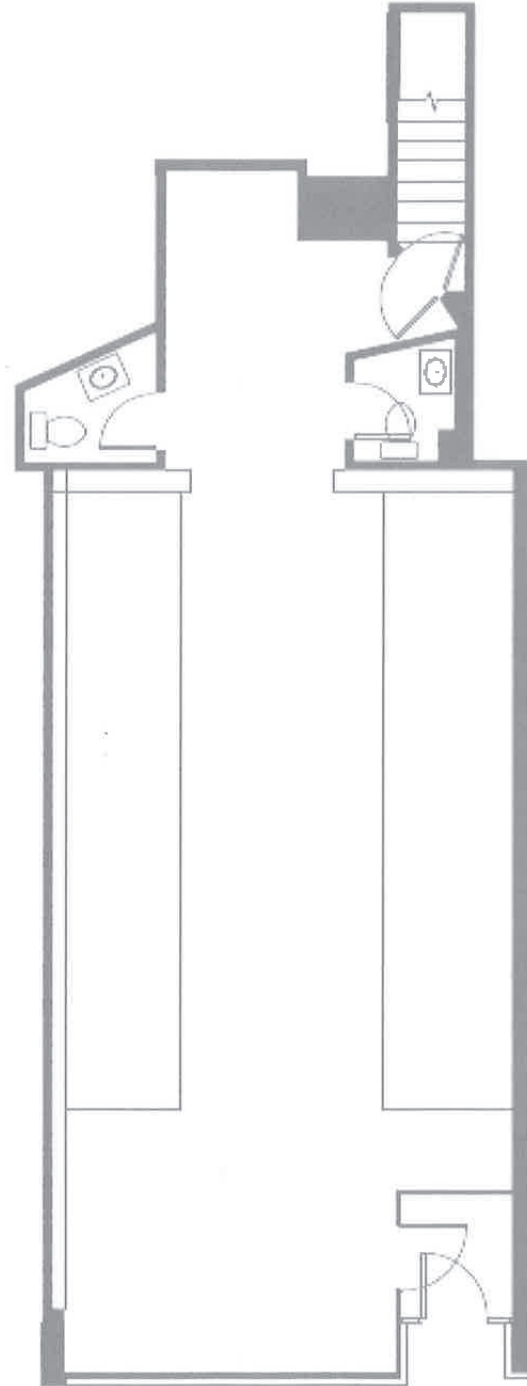
**Henry Goldfarb**  
Executive Managing Director  
212.776.1293  
hgoldfarb@lee-associates.com

 **LEE & ASSOCIATES®**  
COMMERCIAL REAL ESTATE SERVICES  
**leeassociatesnyc.com**

All information supplied is from sources deemed reliable and is furnished subject to errors, omissions, modifications, removal of the listing from sale or lease, and to any listing conditions, including the rates and manner of payment of commissions for particular offerings imposed by principals or agreed by this Company, the terms of which are available to principals or duly licensed brokers. Any square footage dimensions set forth are approximate.

# 466 AMSTERDAM AVENUE

## RESTAURANT ROW



**Stan Lindenfeld**  
Executive Managing Director  
212.776.1292  
[slindenfeld@lee-associates.com](mailto:slindenfeld@lee-associates.com)

**Henry Goldfarb**  
Executive Managing Director  
212.776.1293  
[hgoldfarb@lee-associates.com](mailto:hgoldfarb@lee-associates.com)

 **LEE &  
ASSOCIATES®**  
COMMERCIAL REAL ESTATE SERVICES  
[leeassociatesnyc.com](http://leeassociatesnyc.com)

All information supplied is from sources deemed reliable and is furnished subject to errors, omissions, modifications, removal of the listing from sale or lease, and to any listing conditions, including the rates and manner of payment of commissions for particular offerings imposed by principals or agreed by this Company, the terms of which are available to principals or duly licensed brokers. Any square footage dimensions set forth are approximate.