

FOUNDRY
COMMERCIAL



JOHNNY CARINO'S - BRIER CREEK
8101 BRIER CREEK PARKWAY

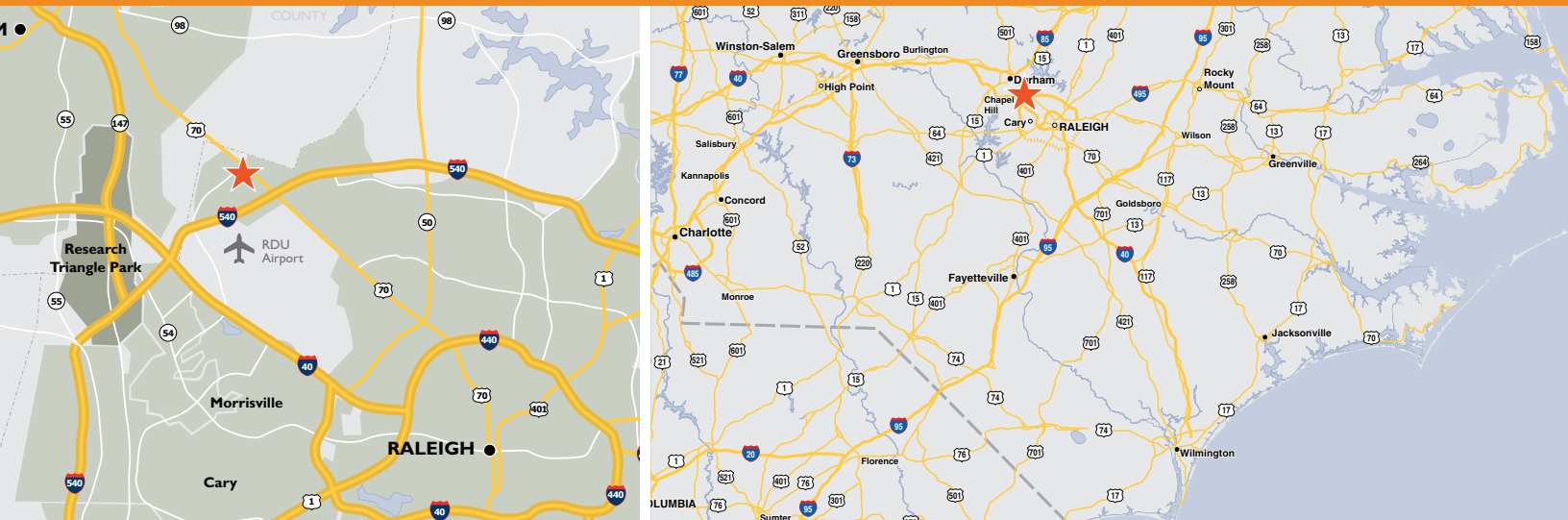
RALEIGH, NC

RESTAURANT SPACE FOR LEASE

±6,260 SF

JOHNNY CARINO'S - BRIER CREEK

RESTAURANT SPACE FOR LEASE



PROPERTY FEATURES

- 2nd Generation restaurant space located in the heart of Brier Creek Shopping Center and the Brier Creek Community
- Brier Creek is a $\pm 2,000$ acre master-planned community with nearly 1.5 million square feet of retail

AREA RETAILERS & RESTAURANTS



BUILDING FEATURES

TOTAL SQUARE FEET	$\pm 6,260$ SF
TOTAL ACRES	± 1.64
AVAILABILITY	Immediately
PRICING	\$45/PSF NNN
ZONING	CUD TD
ACCESS	Excellent

DEMOGRAPHICS

	1 MILE	3 MILES	5 MILES
2015 ESTIMATED POPULATION	6,568	30,280	73,217
2020 PROJECTED POPULATION	7,408	34,027	82,237
EST. HOUSEHOLD INCOME	\$98,933	\$93,571	\$97,651
DAYTIME POPULATION	2,932	20,480	63,305

TRAFFIC COUNTS

HWY 70 / GLENWOOD AVENUE	55,000 VPD
BRIER CREEK PARKWAY	24,000 VPD

For more information, please contact:

JAMES MATTOX
Managing Director
(919) 576 2696
james.mattox@foundrycommercial.com

FOUNDRY
COMMERCIAL

2301 Sugar Bush Road, Suite 220
Raleigh, NC 27612

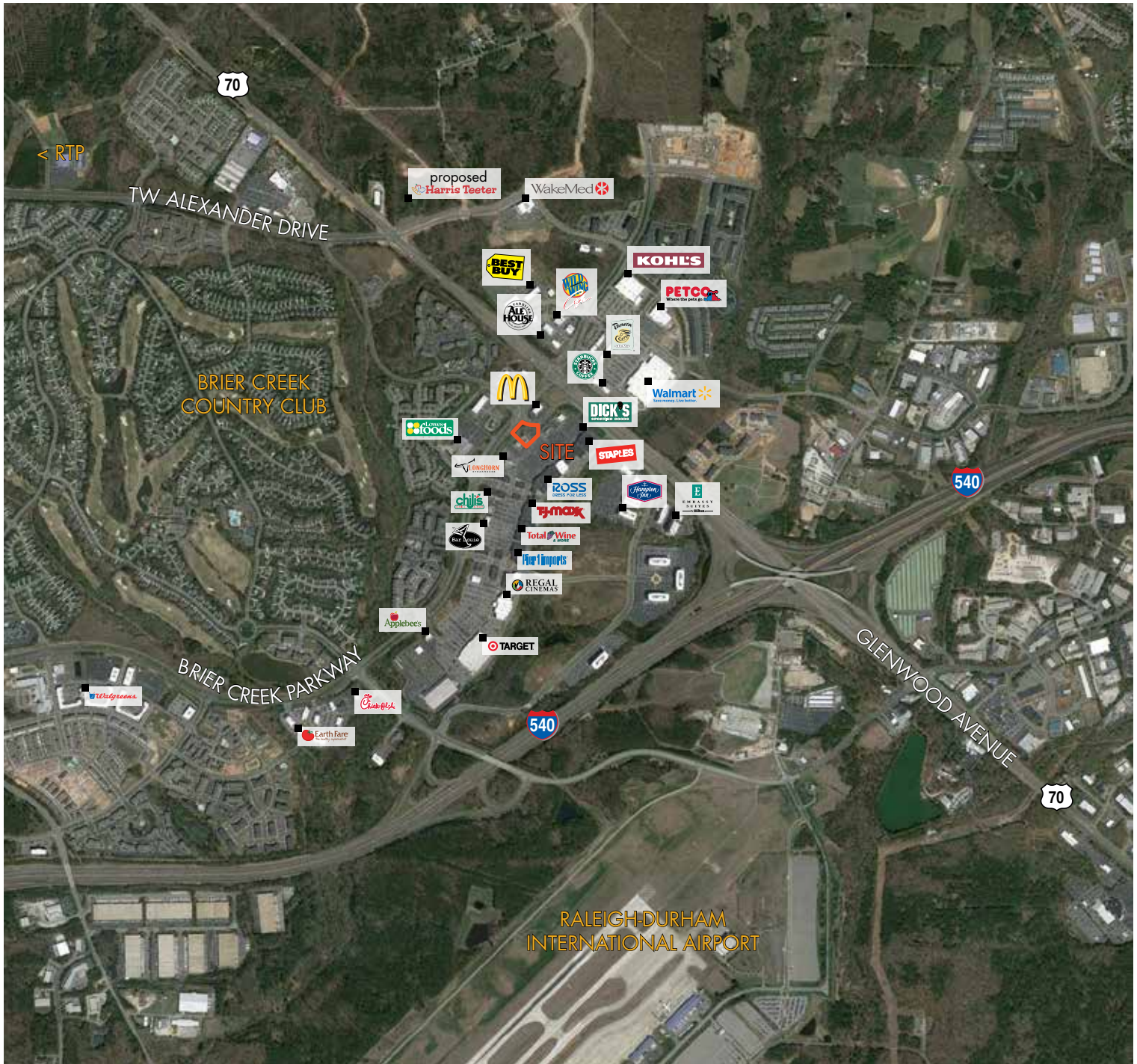
foundrycommercial.com

Although the information contained herein was provided by sources believed to be reliable, Foundry Commercial makes no representation, expressed or implied, as to its accuracy and said information is subject to errors, omissions or changes.

JOHNNY CARINO'S - BRIER CREEK

RESTAURANT SPACE FOR LEASE

LOCATION



For more information, please contact:

JAMES MATTOX
Managing Director
(919) 576 2696
james.mattox@foundrycommercial.com

Although the information contained herein was provided by sources believed to be reliable, Foundry Commercial makes no representation, expressed or implied, as to its accuracy and said information is subject to errors, omissions or changes.

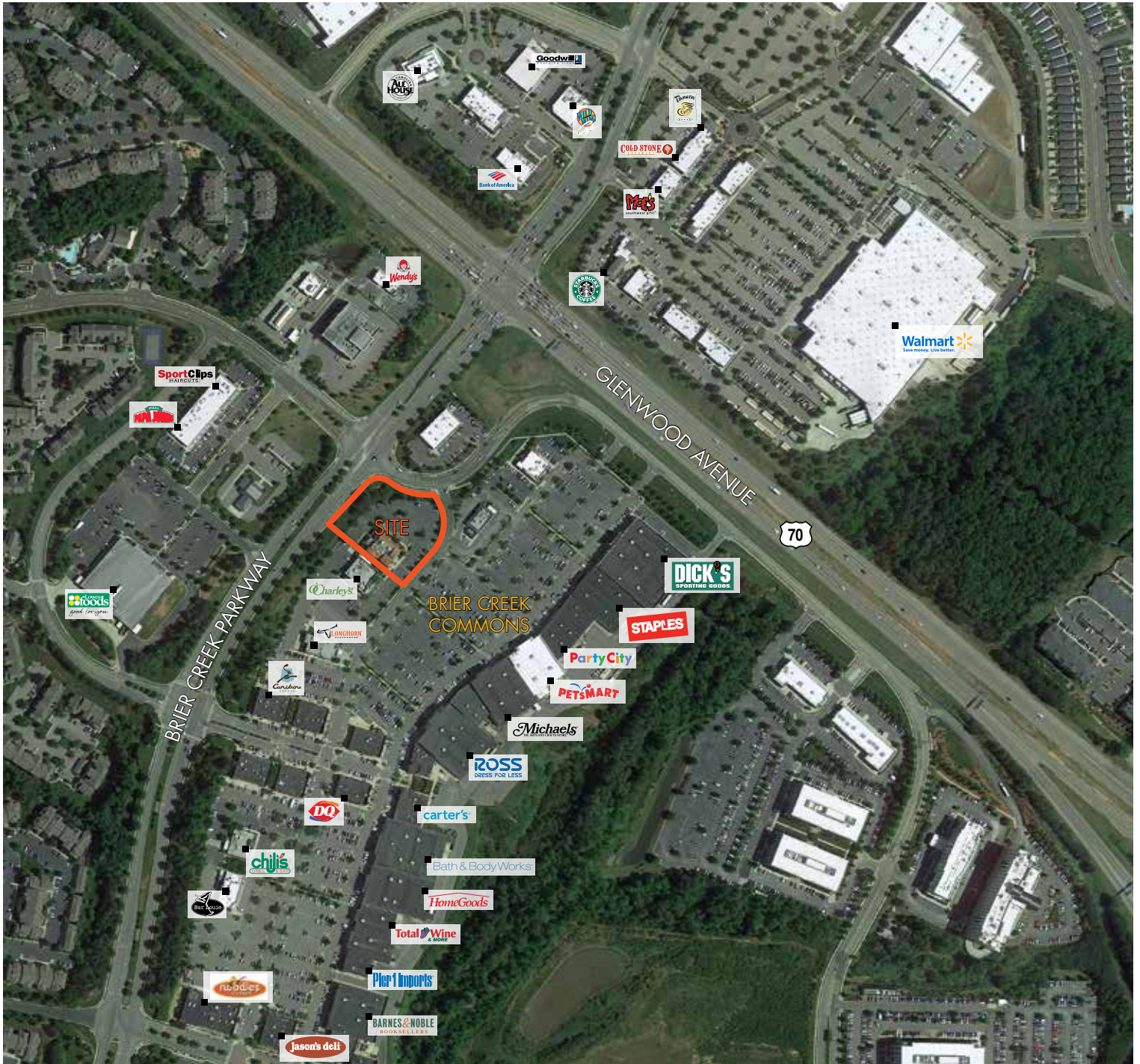
FOUNDRY
COMMERCIAL

2301 Sugar Bush Road, Suite 220
Raleigh, NC 27612

foundrycommercial.com

JOHNNY CARINO'S - BRIER CREEK RESTAURANT SPACE FOR LEASE

LOCATION



For more information, please contact:

JAMES MATTOX
Managing Director
(919) 576 2696
james.mattox@foundrycommercial.com

Although the information contained herein was provided by sources believed to be reliable, Foundry Commercial makes no representation, expressed or implied, as to its accuracy and said information is subject to errors, omissions or changes.

FOUNDRY
COMMERCIAL

2301 Sugar Bush Road, Suite 220
Raleigh, NC 27612

foundrycommercial.com