

9401 GENERAL DRIVE  
PLYMOUTH, MICHIGAN

OFFICE FOR LEASE  
2,449 Square Feet Available



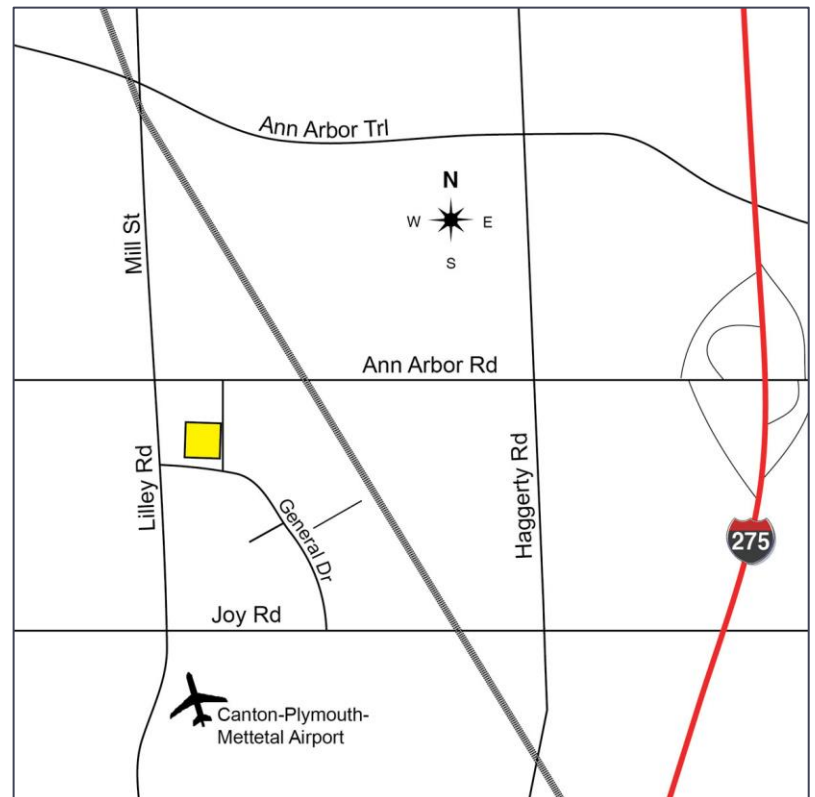
**SIGNATURE  
ASSOCIATES**  
KNOW SIGNATURE | KNOW RESULTS

## LILLEY EXECUTIVE PLAZA II



### PROPERTY FEATURES

- 2,449 square feet available
- Recently renovated common areas and restrooms
- New roof & HVAC in 2015
- Ample parking
- Close to M-14, I-96 and I-275
- Lease Rate: \$16.00/sf Gross + Utilities



For more information, please contact:

**JASON STOUGH**

(248) 948 4180

[jstough@signatureassociates.com](mailto:jstough@signatureassociates.com)

**DAVE GREEN**

(248) 948 4184

[dgreen@signatureassociates.com](mailto:dgreen@signatureassociates.com)

**SIGNATURE ASSOCIATES**

One Towne Square, Suite 1200

Southfield, MI 48076

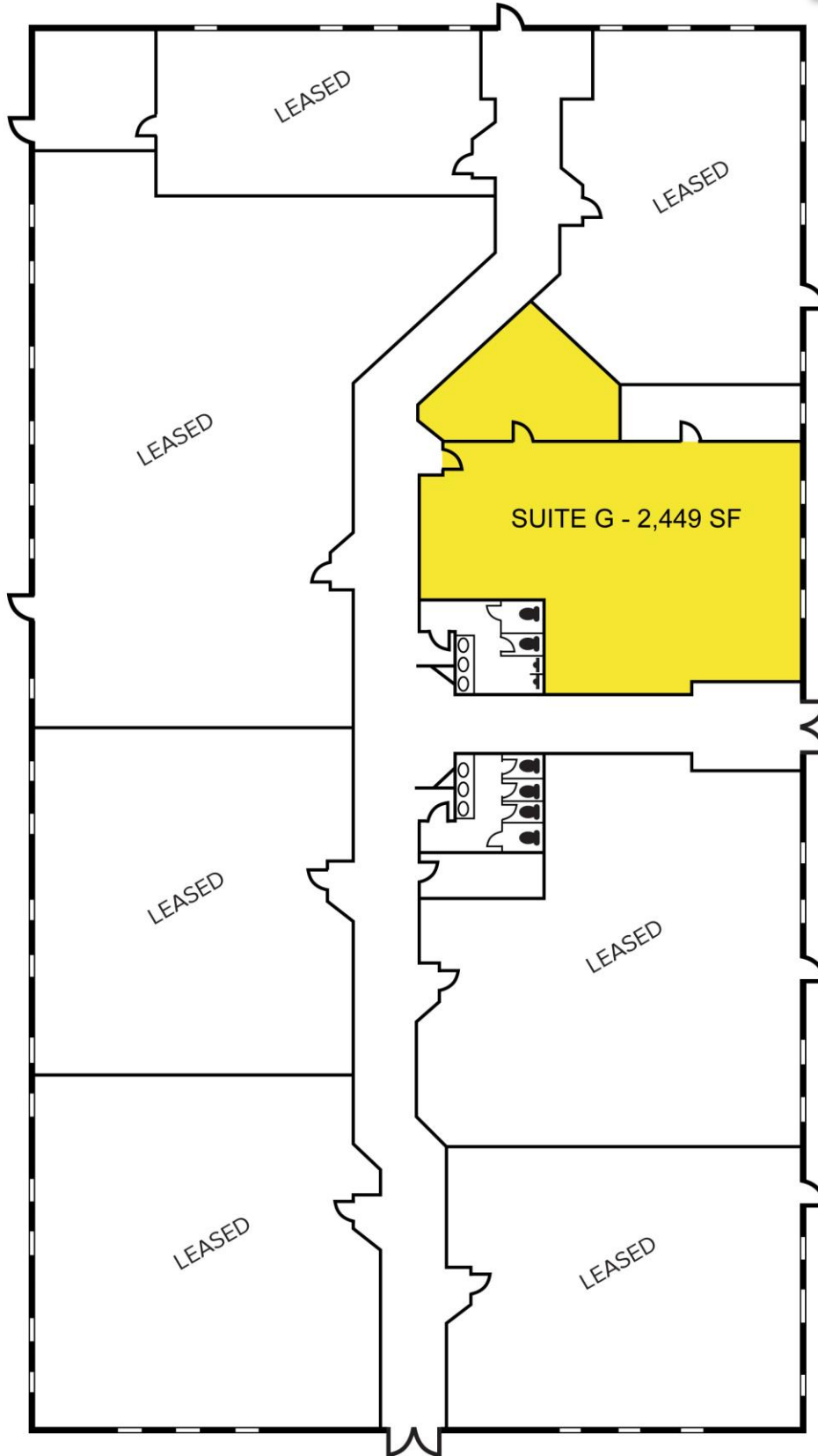
[www.signatureassociates.com](http://www.signatureassociates.com)

# 9401 General Drive - Plymouth, Michigan

Office For Lease

2,449  
Square Feet  
AVAILABLE

Floor Plans  
Suite G – 2,449 SF



For more information, please contact:

**JASON STOUGH**

(248) 948 4180

[jstough@signatureassociates.com](mailto:jstough@signatureassociates.com)

**DAVE GREEN**

(248) 948 4184

[dgreen@signatureassociates.com](mailto:dgreen@signatureassociates.com)

**SIGNATURE ASSOCIATES**

One Towne Square, Suite 1200

Southfield, MI 48076

[www.signatureassociates.com](http://www.signatureassociates.com)