



## Plaza East II: 122,557 SF Available

### Building Features

- > Immediate access to Route 28 via new grade-separated interchange at Westfields Boulevard
- > Dedicated loading dock and rear door accessed freight elevator
- > Surface parking ratio of 3.5 spaces per 1,000 RSF
- > 9-Foot ceilings on typical floors; 10-Foot ceilings on first floor
- > Crisp, clean-line lobby designs with contemporary stone, metal and glass finishes
- > Virtually column-free typical floorplates of 25,890 SF

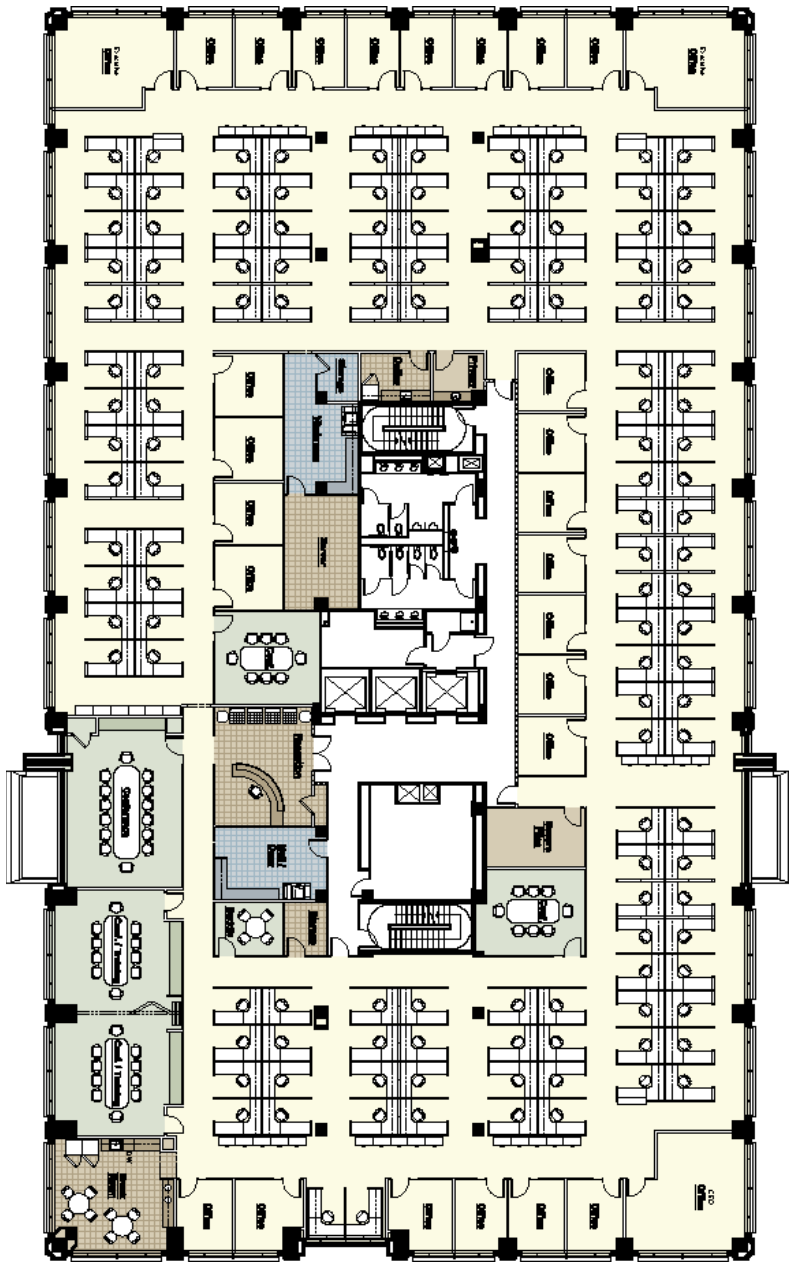
### Precisely Located Conveniences

- > 345-Room hotel, conference facilities and three restaurants at the adjacent Westfields Marriott and Conference Center - Westfields Golf Course, designed by Fred Couples, also nearby
- > Future on-site, tenant-only fitness facility
- > Future on-site deli
- > Child care facilities within Westfields Corporate Center



## Plaza East II > Floor Plan

Single-Tenant Test Fit



## Contact Us

Charles Dilks  
Executive Vice President  
703 407 6752  
charles.dilks@colliers.com

Andy Klaff  
Executive Vice President  
703 394 4848  
andy.klaff@colliers.com

COLLIERS INTERNATIONAL  
8045 Leesburg Pike, Suite 401  
Vienna, VA 22182  
www.colliers.com