

FOR LEASE



## FISK TIRE BUILDING

380 NW 13TH AVENUE  
PORTLAND, OREGON 97209

### AVAILABLE

Suite 200: 7,840 RSF

### RATES

\$39/SF, Full Service Equivalent

### BUILDING HIGHLIGHTS

- Exposed ceiling
- Hardwood floors throughout
- New windows and skylights
- 1.5:1,000 building parking available

### PETER ANDREWS

503.546.4522  
pandrews@melvinmark.com  
Licensed in OR

### PAUL ANDREWS

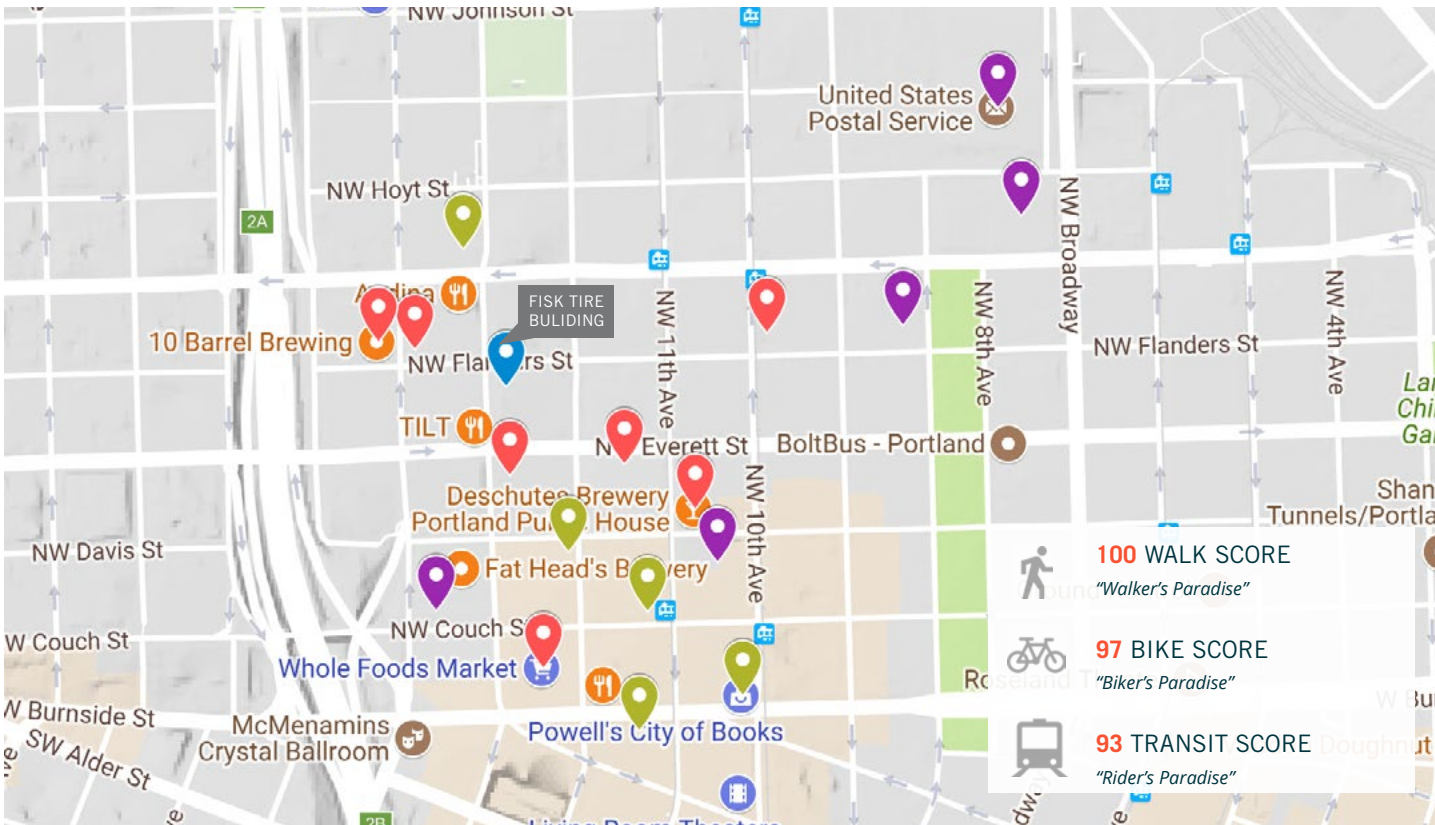
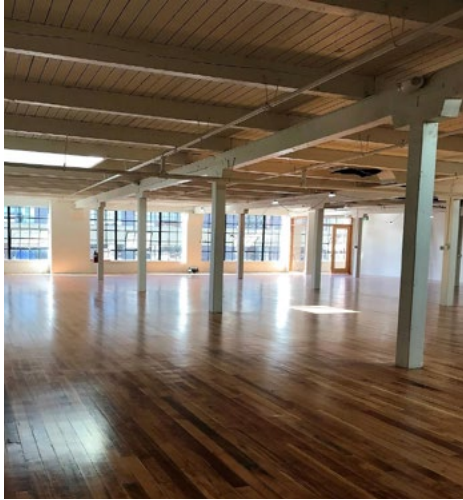
503.546.4542  
pandrews@melvinmark.com  
Licensed in OR

### BRYN HOKKANEN

503.546.4534  
bhokkanen@melvinmark.com  
Licensed in OR

# ABOUT FISK TIRE BUILDING

380 NW 13TH AVENUE | PORTLAND, OREGON 97209



## LOCATION

- Located in the heart of the Pearl District
- Bike, pedestrian and dog friendly area

## PARKING

- 1.5:1,000 building parking available

## BUILDING FEATURES

- Building core and shell renovations completed in 2018.
- Includes: new elevator, seismic retrofit & new windows and skylights for the second floor

## RETAIL

REI  
Powell's Books  
The North Face  
Anthropologie  
Patagonia  
Keen Garage

## SERVICES

Amtrak  
US Post Office  
Pacific Northwest College of Art  
Portland Center Stage  
Pearl Medspa  
Regional Arts & Culture Council

## RESTAURANTS

Oven and Shaker  
Whole Foods Market  
Deschutes Brewery Portland Public House  
Mediterranean Exploration Company  
10 Barrel Brewing  
TILT  
Blue Hour  
Nuvrei

All rights reserved. All information contained herein is from sources deemed reliable; however, no representation or warranty is made to the accuracy thereof.

# FISK TIRE BUILDING

FLOOR PLAN

AVAILABLE

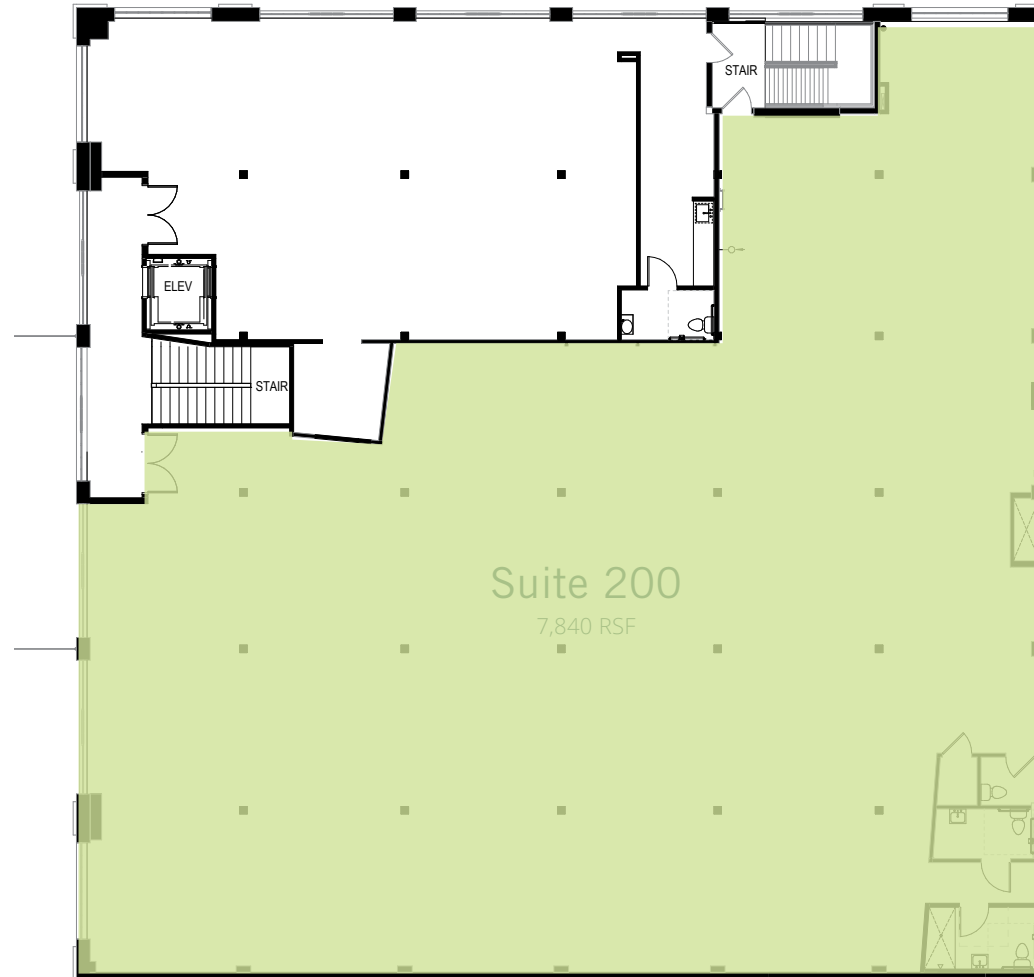
Suite 200: 7,840 RSF

RATES

\$39/SF, Full Service Equivalent

## Suite 200 7,840 RSF

- NEW ELEVATOR
- Creative office space
- Exposed ceilings
- Hardwood floors throughout
- Seismic retrofit
- New windows and skylights
- Shower
- Pearl District location
- 1.5:1,000 building parking available



**FOR LEASE FISK TIRE BUILDING**

380 NW 13TH AVENUE  
PORTLAND, OREGON 97209

**PETER ANDREWS**

503.546.4522  
pandrews@melvinmark.com  
Licensed in OR

**PAUL ANDREWS**

503.546.4542  
pandrews@melvinmark.com  
Licensed in OR

**BRYN HOKKANEN**

503.546.4534  
bhokkanen@melvinmark.com  
Licensed in OR