

FOR LEASE

Historic Waterfront Office Space

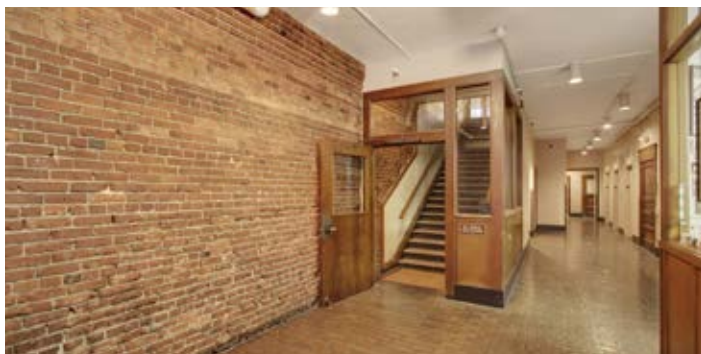
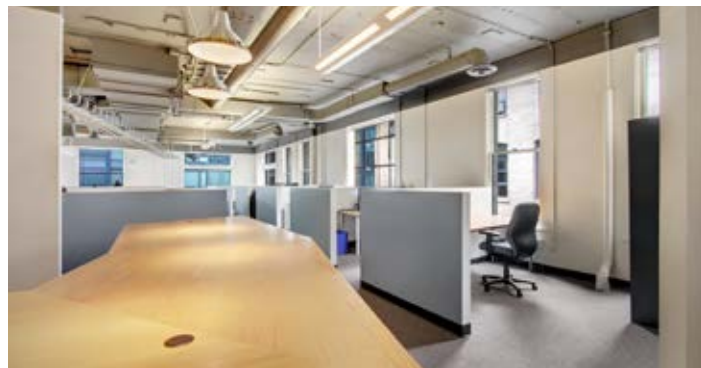
811 First Avenue • Seattle, Washington



THE COLMAN BUILDING

- ◆ Historic building updated with modern conveniences
- ◆ Excellent access to Highway-99 and I-5
- ◆ Direct access to the Colman ferry dock via skybridge
- ◆ Operable windows throughout
- ◆ Numerous restaurants and retail amenities within walking distance
- ◆ Excellent access to Metro buses
- ◆ Direct access to the waterfront
- ◆ Building conference room
- ◆ On-site building management
- ◆ Common kitchen facility
- ◆ Secure bicycle storage
- ◆ Building showers
- ◆ Starbucks, Quiznos and The UPS Store on site

www.colmanbuilding.com



FOR LEASE

Historic Waterfront Office Space

811 First Avenue • Seattle, Washington



THE COLMAN BUILDING

CURRENT AVAILABILITIES

SPACE	SIZE	AVAILABILITY
Suite 262	485 SF	Available 12/1/2018
Suite 466	2,194 SF	Available now
Suite 468	509 SF	Available now
Suite 500	1,749 SF	Available 12/1/2018
Suite 530	8,209 SF	Available 1/1/2019
Suite 570	6,862 SF	Available now (Divisible to 2,330 SF)
Suite 625	6,435 SF	Available now (Divisible to 2,227 SF)
Suite 626	1,354 SF	Available 3/1/2019
Suite 630	4,024 SF	Available 6/1/2019 (Divisible to 1,396 SF)



For further information, please contact our exclusive agent:

Cavan O'Keefe 206.395.2903 cavan.okeefe@ngkf.com

Brody O'Keefe 206.453.1463 brody.okeefe@ngkf.com

Licensed Washington Real Estate Brokers