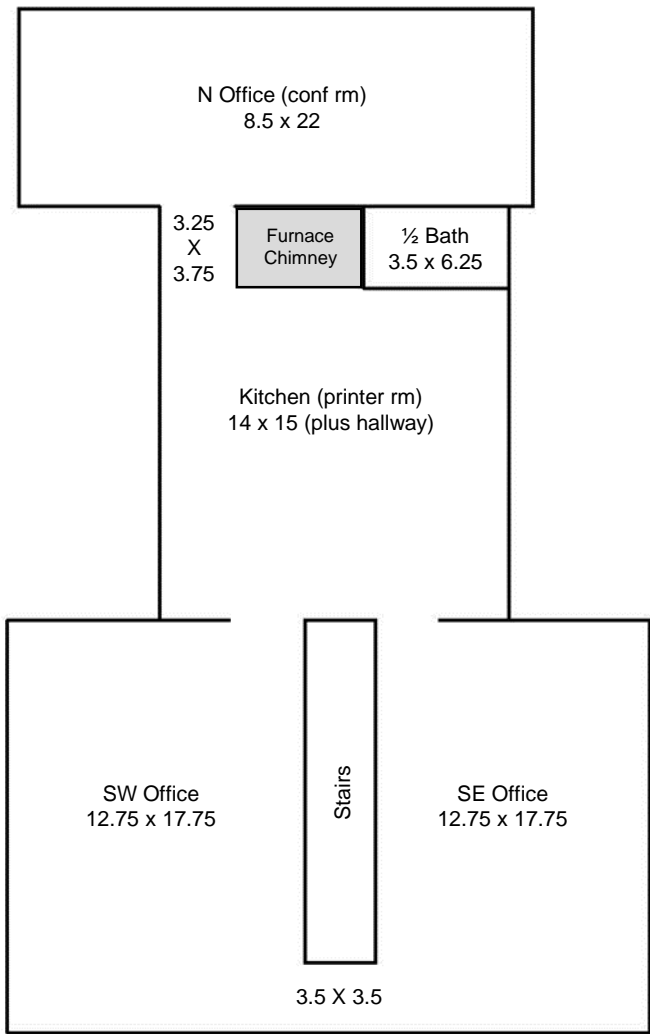
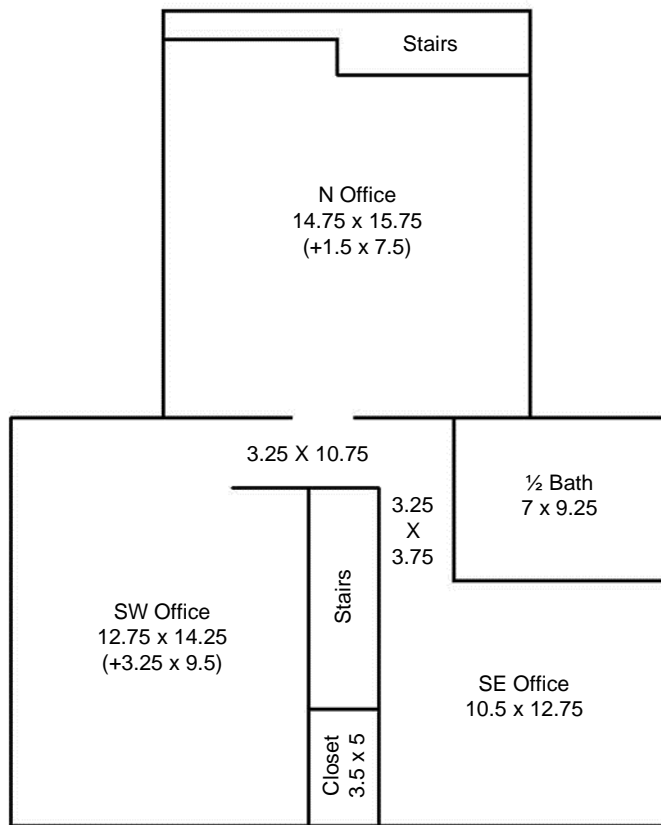


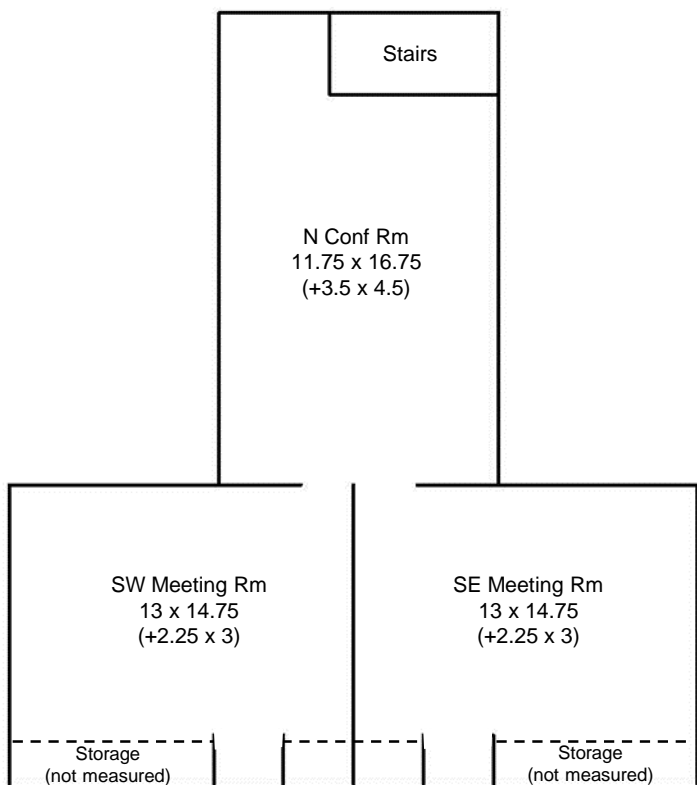
**4327 Point Pleasant Pike  
Doylestown, PA  
(~2,225 sf Office)**



**1<sup>st</sup> Floor (~896 sf)**



**2<sup>nd</sup> Floor (~719 sf)**



**3<sup>rd</sup> Floor (~610 sf)**



**BUCKS REALTY GROUP**

**CURT MORTON**

646-701-4262 / CMORTON@BUCKSREALTY.NET

