

207 N. MICHIGAN AVENUE
HOWELL, MICHIGAN

OFFICE FOR LEASE
1,351 - 5,385 Square Feet Available



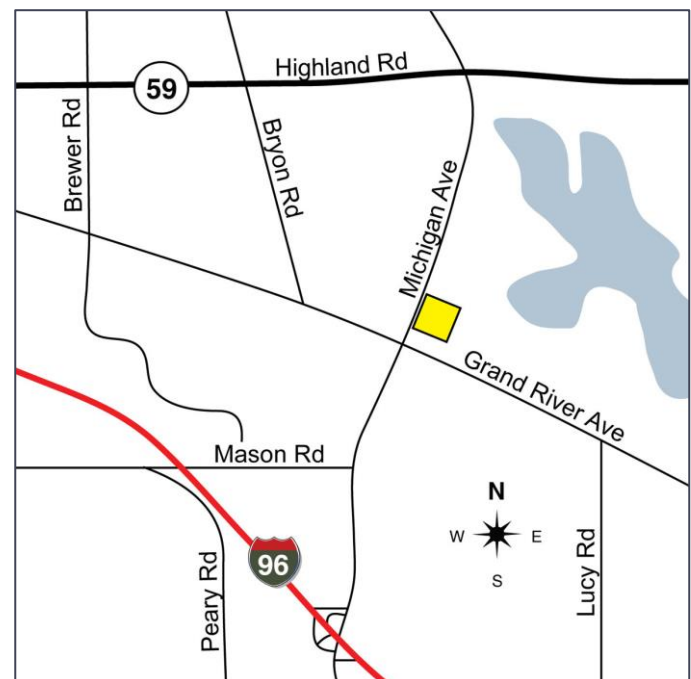
**SIGNATURE
ASSOCIATES**
KNOW SIGNATURE | KNOW RESULTS

BANKERS SQUARE



PROPERTY FEATURES

- 1,351 - 5,385 square feet available
- Class A building
- Building is 10,770 square feet
- Two floors, floor plates are 5,385 square feet
- One of the best buildings in Livingston County
- First class construction and stabilized rental stream
- Downtown Howell location, all of the conveniences of a downtown location
- Lease Rate: \$11.00-\$19.00/sf NNN



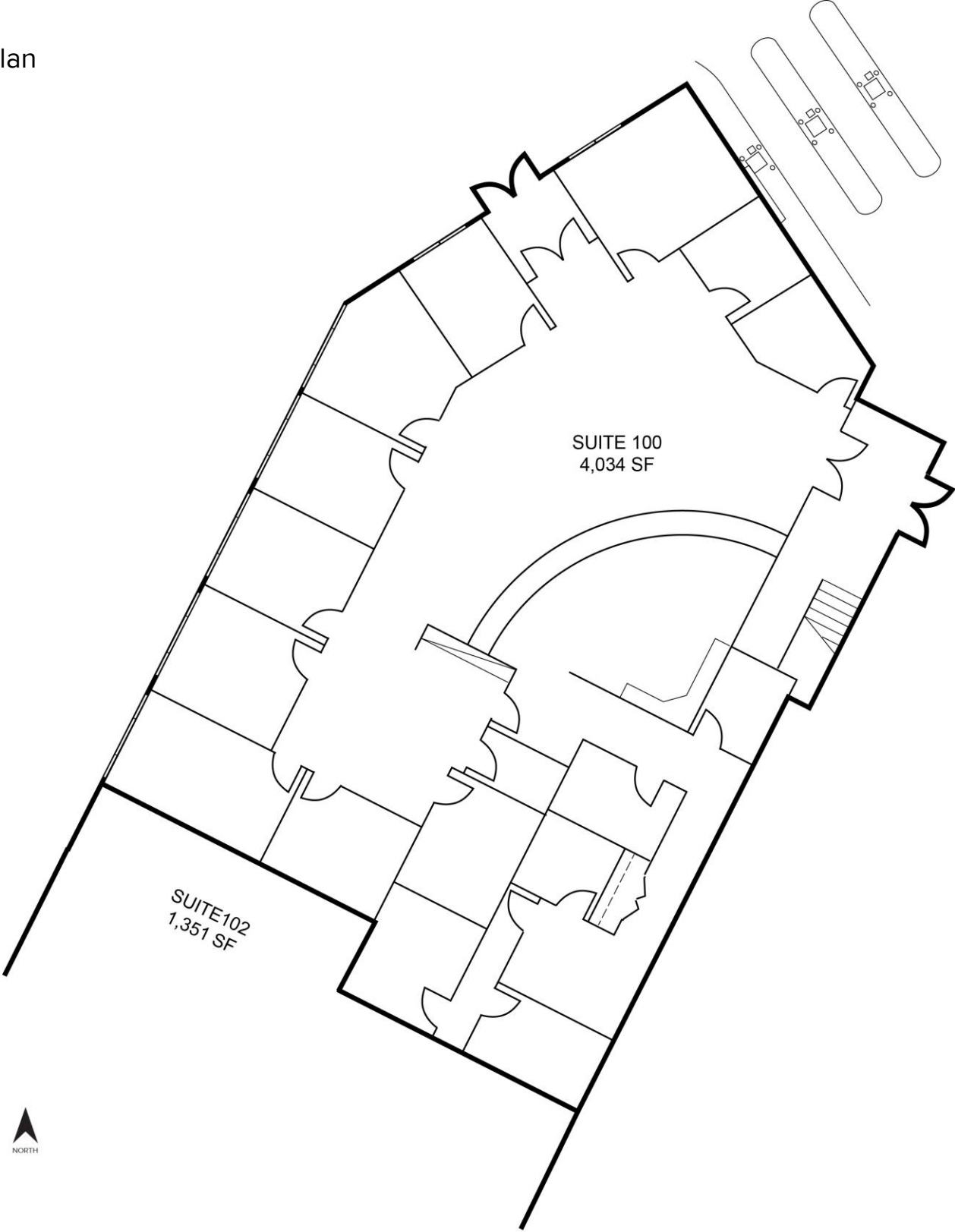
For more information, please contact:

DAVE GREEN
(248) 948 4184
dgreen@signatureassociates.com

JASON KELMIGIAN
(248) 359 0629
jkelmigian@signatureassociates.com

SIGNATURE ASSOCIATES
One Towne Square, Suite 1200
Southfield, MI 48076
www.signatureassociates.com

Floor Plan



For more information, please contact:

DAVE GREEN
(248) 948 4184
dgreen@signatureassociates.com

JASON KELMIGIAN
(248) 359 0629
jkelmigian@signatureassociates.com

SIGNATURE ASSOCIATES
One Towne Square, Suite 1200
Southfield, MI 48076
www.signatureassociates.com

Information is subject to verification and no liability for errors or omissions is assumed. Price is subject to change and listing withdrawal.