

FOR LEASE

# EXECUTIVE SUITES

300

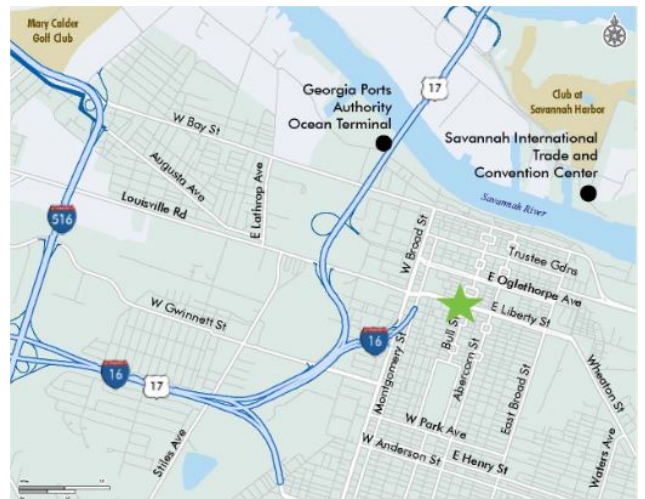
DRAYTON STREET  
Savannah, GA 31401



## PROPERTY INFO

### EXECUTIVE OFFICE SUITES

- + Suites A, E, F and K Available – please inquire for rent
- + Rate includes CAM, taxes, insurance, phone & internet services, handsets, on-site parking
- + High-Profile corner location with superior visibility
- + Building conference room available for tenants
- + On-site employee parking in attached garage
- + Building façade signage available
- + Located next to Desoto Hilton Hotel, Mellow Mushroom, Soho Café, J Christopher's & Hitch



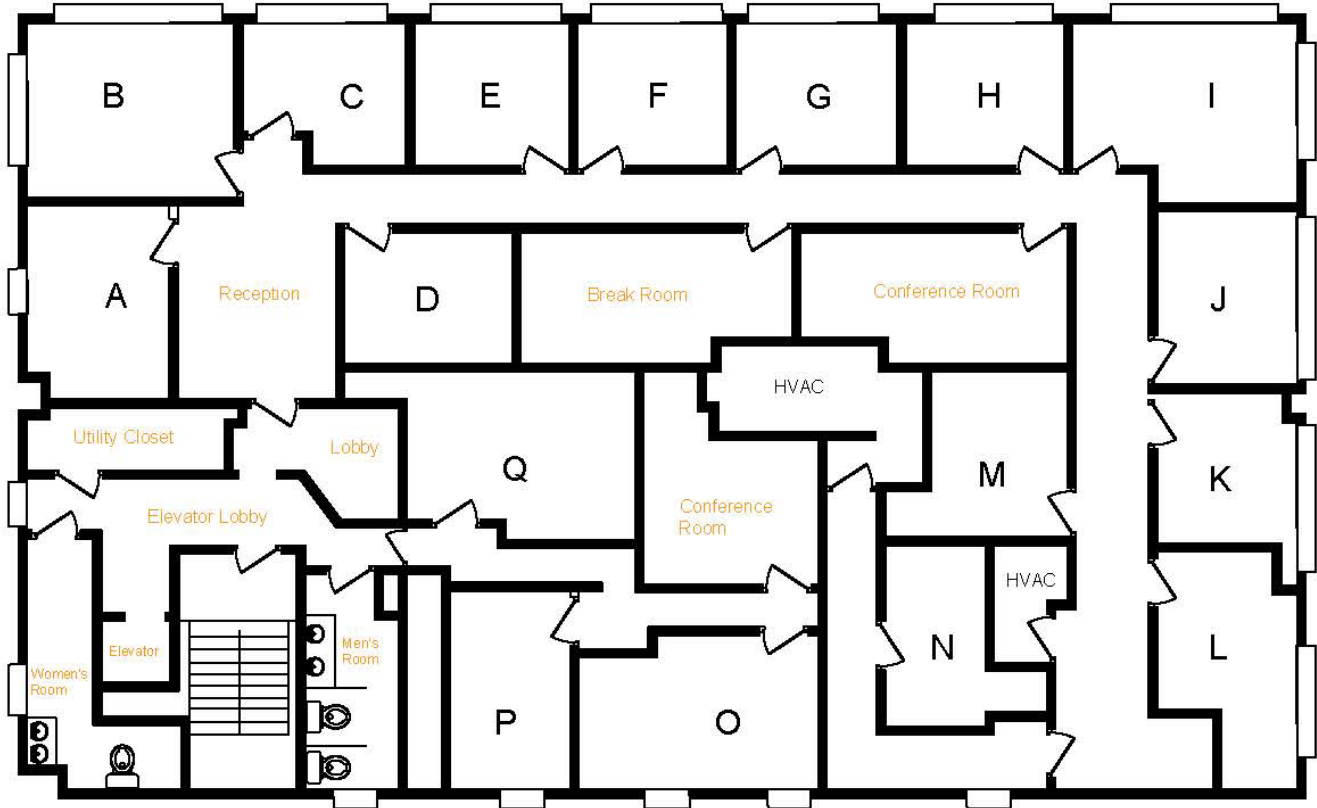
[www.cbre.com/savannah](http://www.cbre.com/savannah)

**CBRE**

# FOR LEASE EXECUTIVE SUITES

300  
DRAYTON STREET  
Savannah, GA 30401

## THIRD FLOOR



## CONTACT US

### ELIZABETH DEWITT

Brokerage Services  
+1 912 228 3528  
elizabeth.dewitt@cbre.com

### BILL SPARKS, SIOR

First Vice President  
+1 912 228 3528  
bill.sparks@cbre.com

### CBRE, INC.

300 Drayton St.  
First Floor  
Savannah, GA 30401

© 2018 CBRE, Inc. This information has been obtained from sources believed reliable. We have not verified it and make no guarantee, warranty or representation about it. Any projections, opinions, assumptions or estimates used are for example only and do not represent the current or future performance of the property. You and your advisors should conduct a careful, independent investigation of the property to determine to your satisfaction the suitability of the property for your needs. Photos herein are the property of their respective owners and use of these images without the express written consent of the owner is prohibited. CBRE and the CBRE logo are service marks of CBRE, Inc. and/or its affiliated or related companies in the United States and other countries. All other marks displayed on this document are the property of their respective owners.

[www.cbre.com/savannah](http://www.cbre.com/savannah)

**CBRE**