



DOWNTOWN SACRAMENTO

Prime, 2nd Generation Restaurant Space in the heart of Downtown Sacramento

Hard corner space opening onto Cathedral Plaza and with Capitol views. $\pm 4,492$ SF divisible to $\pm 1,262$ SF. This ideally located space has a fully renovated exterior.

VIDEO TOUR

[CLICK HERE TO VIEW VIDEO TOUR](#)



David Herrera

Senior Vice President
+1 916 563 3032
david.herrera@colliers.com
Lic. No. 01484908

Mark Engemann

Senior Vice President
+1 916 563 3007
mark.engemann@colliers.com
Lic. No. 00865424

COLLIERS INTERNATIONAL
301 University Avenue Ste 100
Sacramento, CA 95825
+1 916 929 5999



One of
downtown's
most iconic
retail locations.

Located on K Street and
situated just below the 21 Luxury
apartments, this prime location has
abundant foot traffic and visibility.

±1,262 SF to 4,492 SF
AVAILABLE



Second Gen
Restaurant Space



25'
Ceilings



Large Outside
Patio



Building
Signage



Walk Score™
97



Large Useable
Basement



Operational
Lift



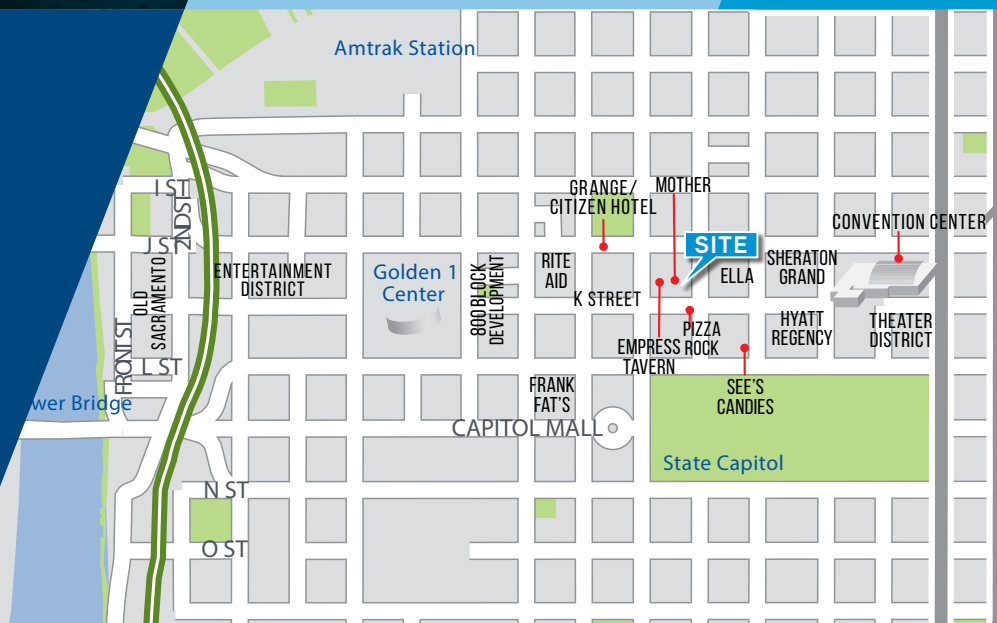
Prime Downtown
Location



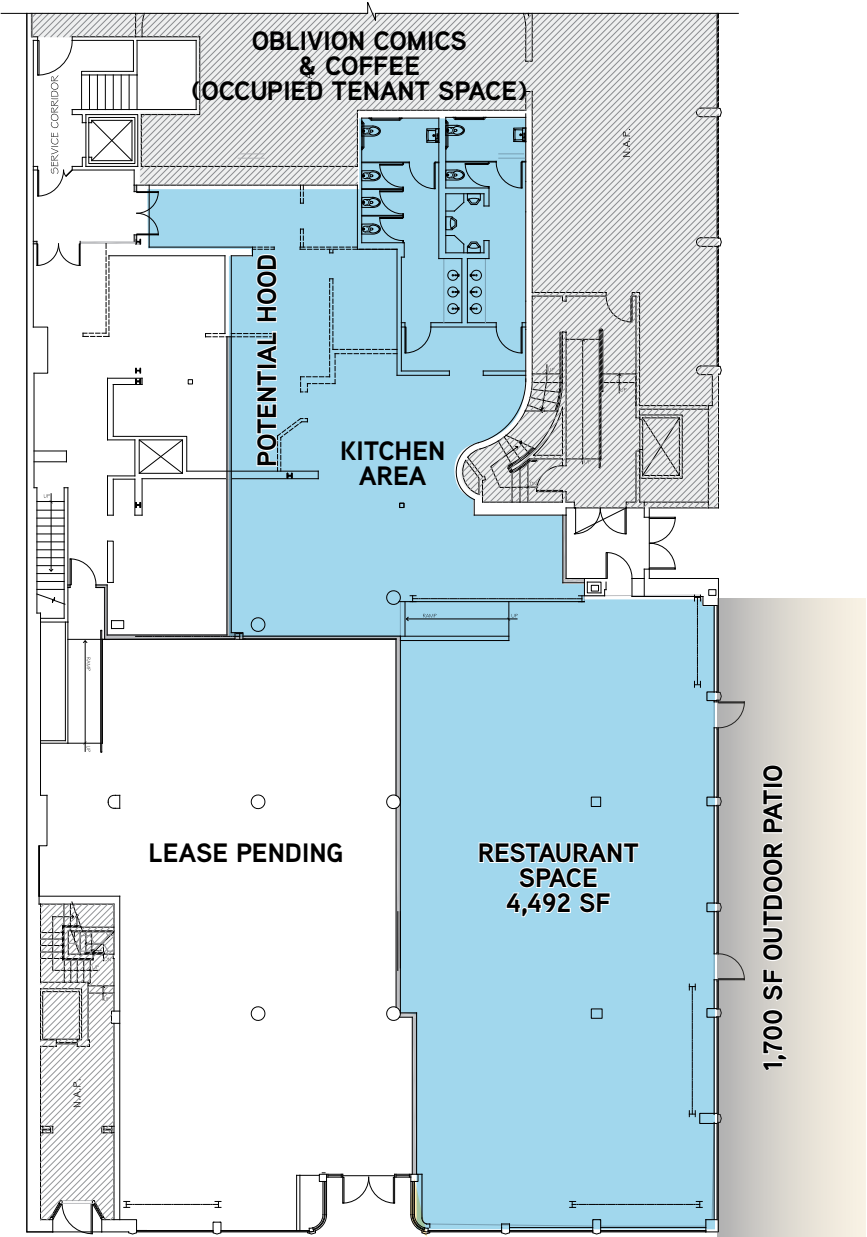
Regional
Transit



Abundant
Natural Light



FLOOR PLAN –
TWO UNIT SPLIT

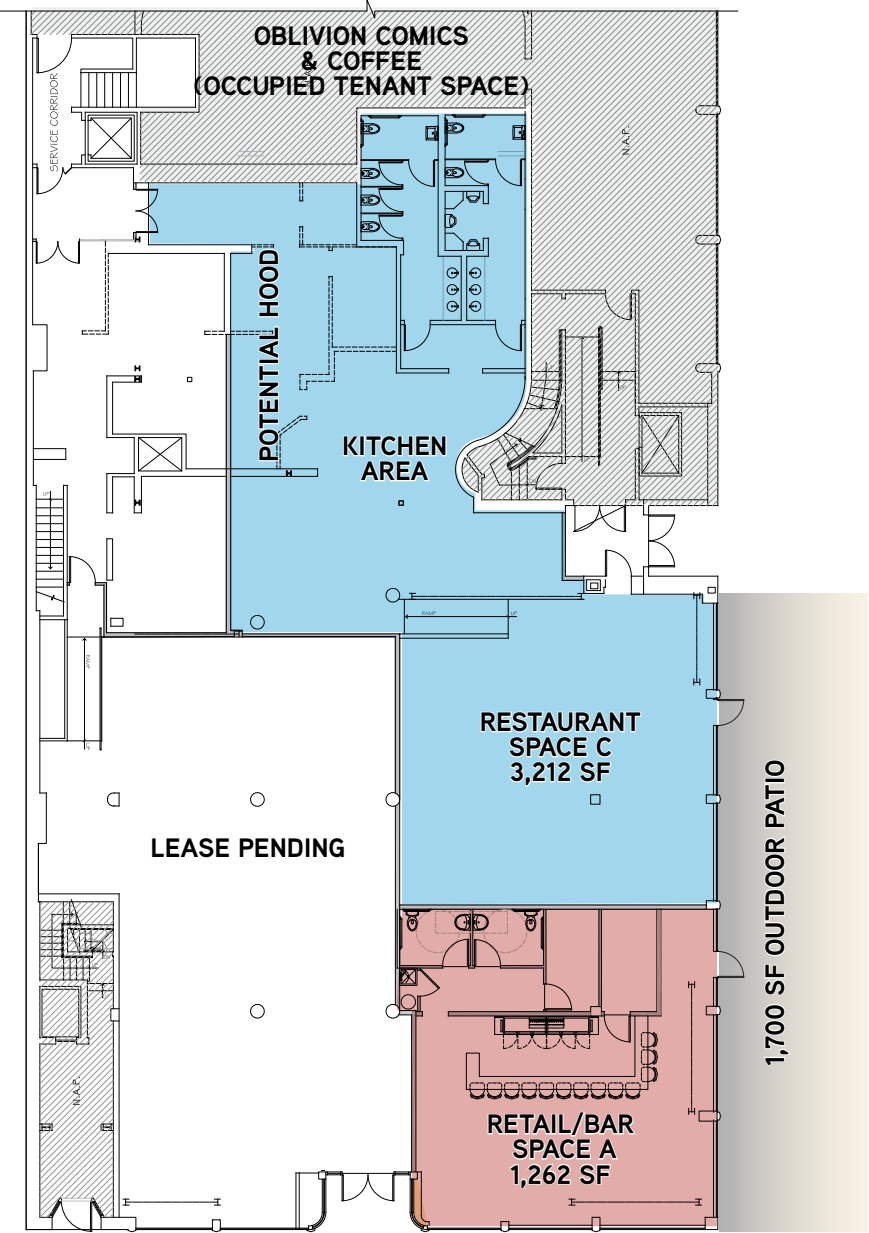


 = restaurant space for lease

K STREET EXIT

CATHEDRAL SQUARE PLAZA

FLOOR PLAN –
THREE UNIT SPLIT



- = retail/bar space A for lease
- = restaurant space B for lease



DOWNTOWN SACRAMENTO FAST FACTS

\$73,122 
AVERAGE HOUSEHOLD
INCOME WITHIN
THREE MILES

101,968 
DAYTIME
EMPLOYEES

23,913,687 
SQUARE FEET OF
BUILDING SPACE

2M+ 
VISITORS
ANNUALLY

 **10** HOTELS

1.3K HOUSING UNITS
UNDER CONSTRUCTION

 **875,000**
CONVENTION
ATTENDEES

400 
BUSINESSES

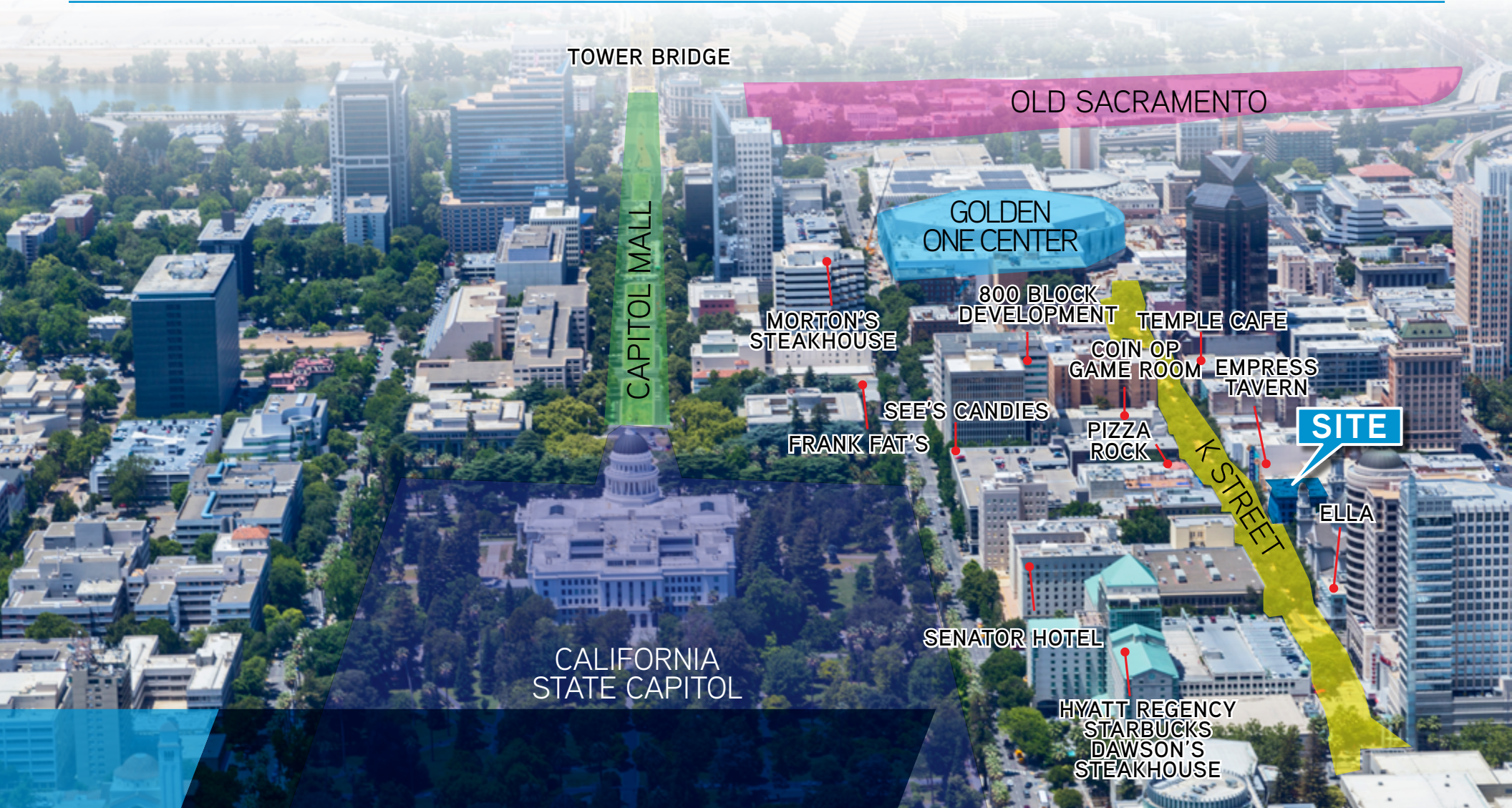
BUILDING SPECIFICATIONS

Building Name	The M.A.Y. Building
Address	1029 K Street, Sacramento, CA
Cross Street	11th Street
Vacant SF	1,292 SF up to 4,492 SF
Built/ Renovated	Built 1910, Renovated 2016
Walk Score	Walker's Paradise (97)
Amenities	21 Luxury Apartments on Upper Floors Adjacent Capitol Event Center - 200 Person Capacity 25' Ceilings & Large Useable Basement

HOT SPOTS ON K STREET

The surrounding hot spots on K street testify to the power of foot traffic of the large daytime population of over 70,000 employees, as well as the ever increasing downtown resident population.





David Herrera
Senior Vice President
+1 916 563 3032
david.herrera@colliers.com
Lic. No. 01484908

Mark Engemann
Senior Vice President
+1 916 563 3007
mark.engemann@colliers.com
Lic. No. 00865424

This document has been prepared by Colliers International for advertising and general information only. Colliers International makes no guarantees, representations or warranties of any kind, expressed or implied, regarding the information including, but not limited to, warranties of content, accuracy and reliability. Any interested party should undertake their own inquiries as to the accuracy of the information. Colliers International excludes unequivocally all inferred or implied terms, conditions and warranties arising out of this document and excludes all liability for loss and damages arising there from. This publication is the copyrighted property of Colliers International and/or its licensor(s). Real estate officer license corporation identification number 01908588. ©2018. All rights reserved.

COLLIERS INTERNATIONAL
301 University Avenue Ste 100
Sacramento, CA 95825
+1 916 929 5999

