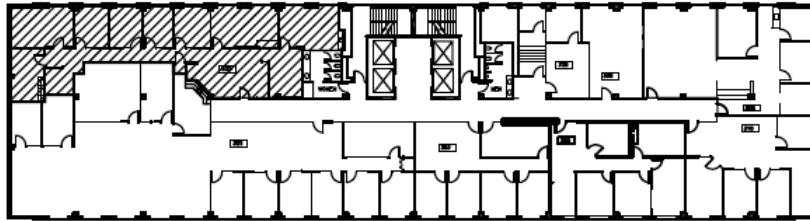
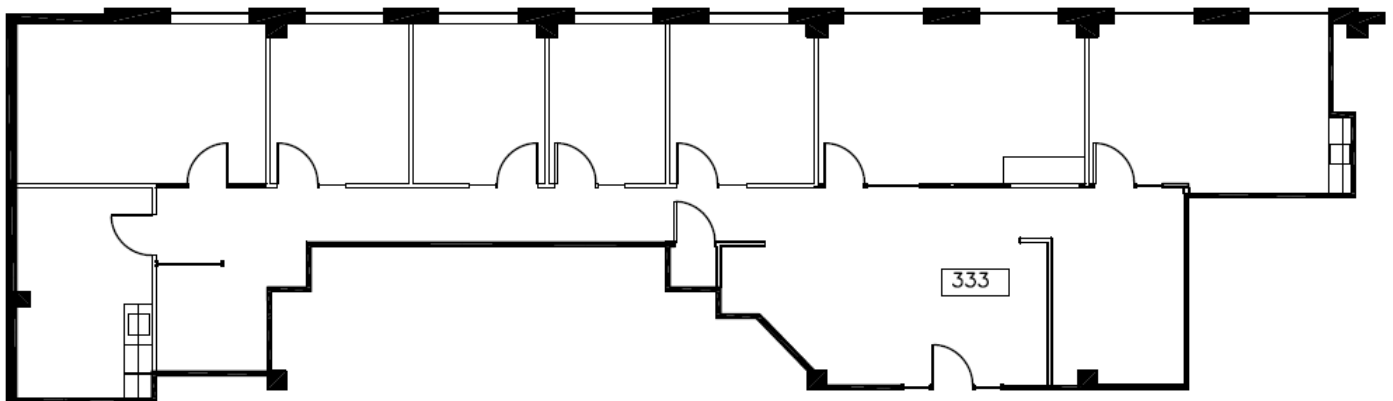


# Sixth & Lenora Building |

2033 Sixth Avenue, Seattle, WA 98121



 Active Voice Floor 3



NORTH

## Suite 329 | Approx. 2,416 RSF

For Leasing Information: Contact Ed Luera or Chloe Martin

[eluera@cliseproperties.com](mailto:eluera@cliseproperties.com) | [cmartin@cliseproperties.com](mailto:cmartin@cliseproperties.com) | (206) 623-7500

