

# AVAILABILITY SHEET

## 3390 BUILDING

Suite 100		7,426 SF		\$3.75/SF	+E
Suite 200		20,291 SF		\$3.75/SF	+E

\*Building Contiguous up to 32,805 SF

## 3394 BUILDING

Suite 100		9,154 SF		\$3.75/SF	+E
Suite 100/130		11,251 SF		\$3.75/SF	+E
Suite 250		5,720 SF		\$3.75/SF	+E

\*Suite 130 only available if leased with Suite 100

## 3398 BUILDING

Suite 250*		13,463 SF		\$3.55/SF	+E
------------	--	-----------	--	-----------	----

\*Divisible to 5,000 SF

- Outdoor Meeting & Seating Areas
- Existing & Future Private Decks & Patios
- Showers & Locker Facilities



CARMEL MOUNTAIN ROAD

TORREY PINES RESERVE



For more information, please contact:

**Bill Cavanagh**  
 Direct: 858.546.5460  
 Mobile: 858.775.5460  
 bill.cavanagh@cushwake.com  
 LIC #00905262

**Mike Novkov**  
 Direct: 858.546.5412  
 Mobile: 858.886.6124  
 mike.novkov@cushwake.com  
 LIC #01890388

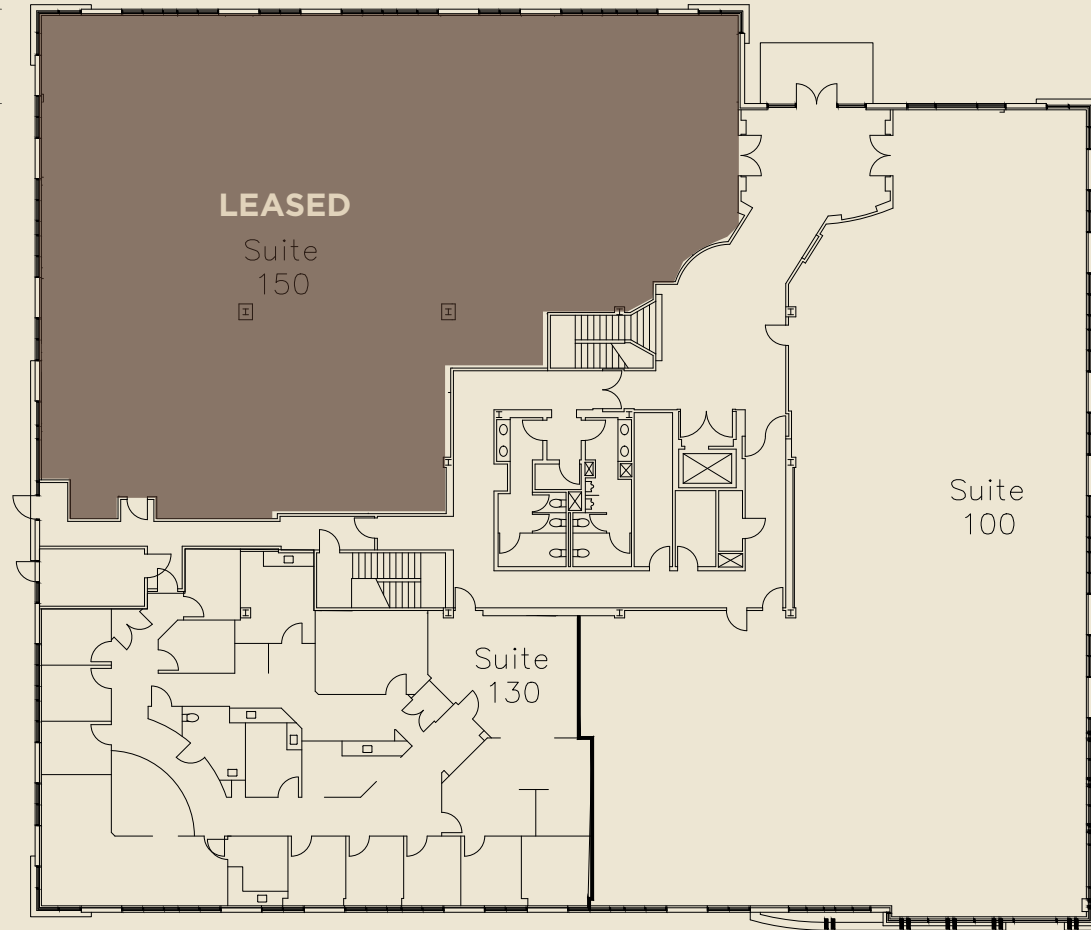
**Michael Cassolato**  
 Direct: 858.546.5434  
 Mobile: 858.395.7615  
 michael.cassolato@cushwake.com  
 LIC #01893847



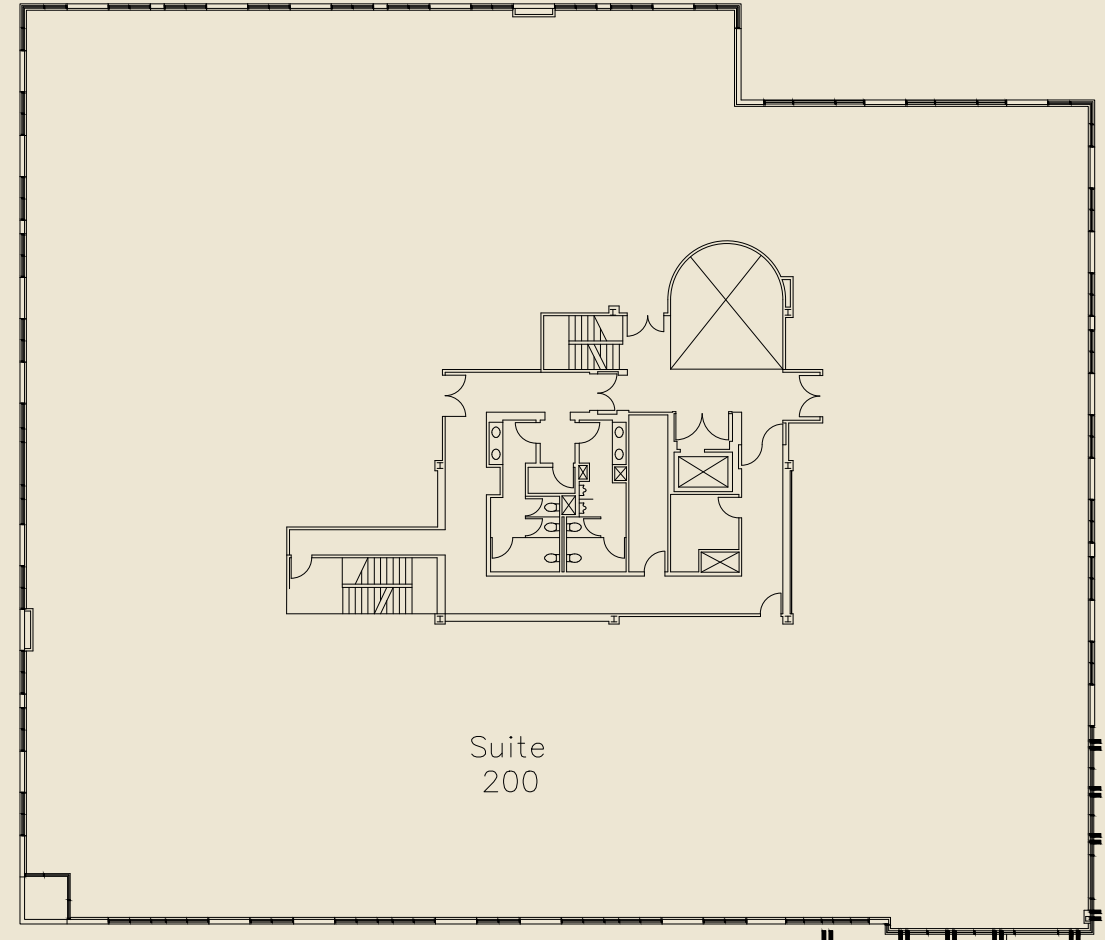
# FLOORPLAN & CURRENT AVAILABILITY

3390 Partial Building | 32,085 SF | \$3.75/SF +E

\*Suite 130 only available if Tenant leases 32,805 SF



**1ST FLOOR**  
11,794 SF



**2ND FLOOR**  
20,291 SF

N

# FLOORPLAN & CURRENT AVAILABILITY

3390 | SUITE 100 | 7,426 SF

(HYPOTHETICAL PLAN)

\*SUITE IS IN SHELL CONDITION

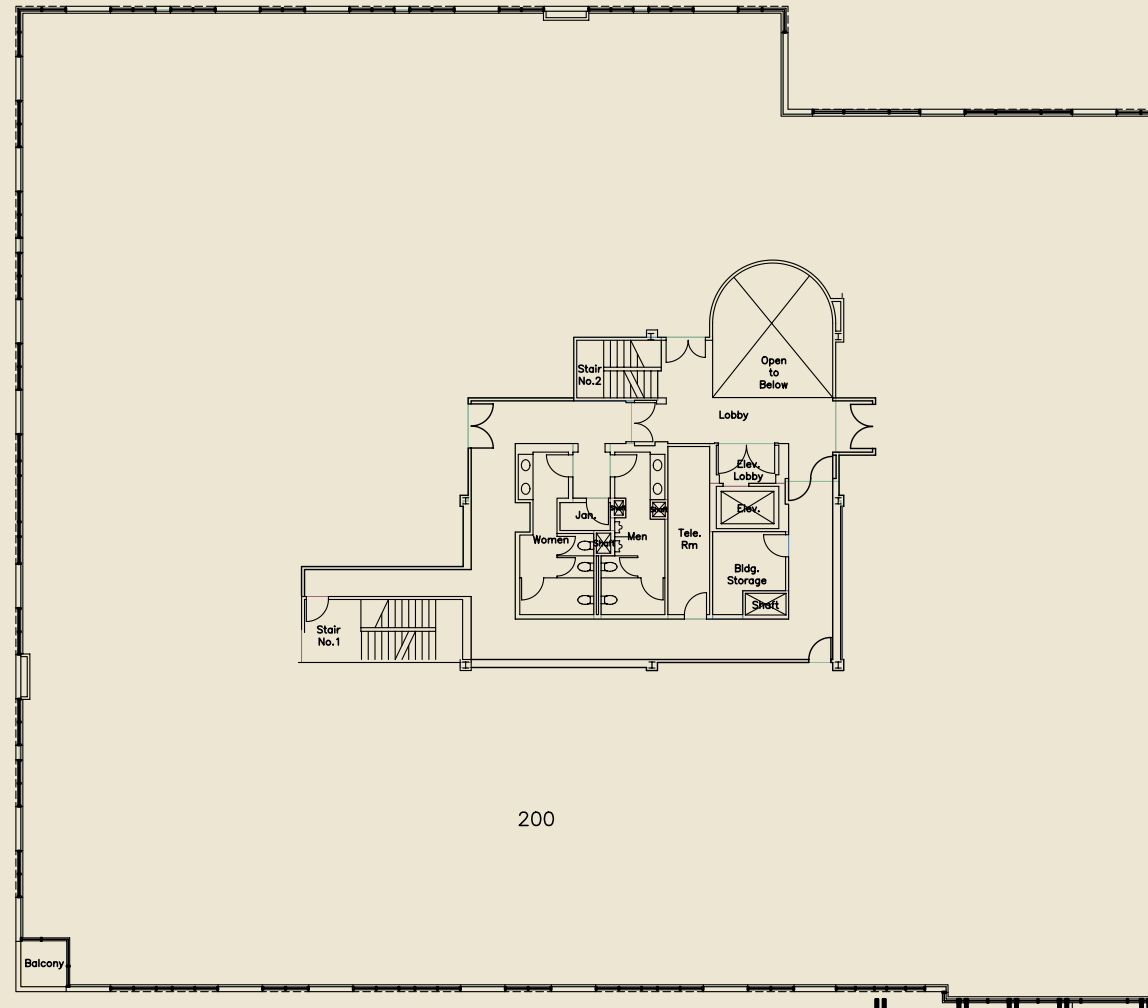


Private Patio  
with Roll-up Door



# FLOORPLAN & CURRENT AVAILABILITY

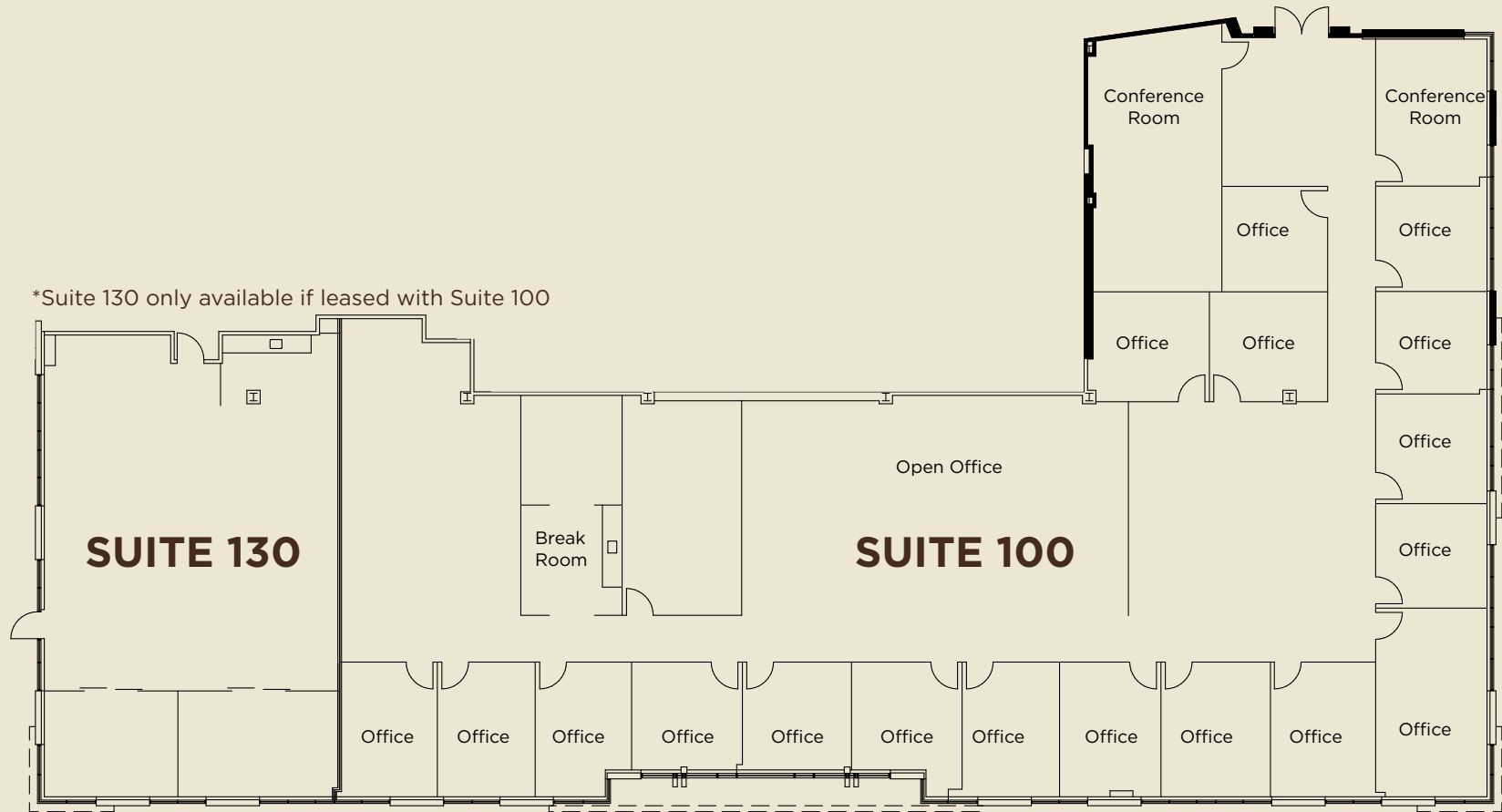
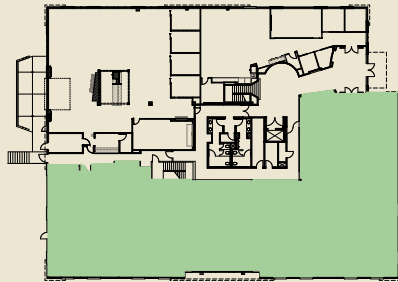
3390 BUILDING | SUITE 200 | 20,291 SF  
(FULL FLOOR)



# FLOORPLAN & CURRENT AVAILABILITY

3394 BUILDING | SUITE 100 | 9,154 - 11,251 SF

(AS-BUILT)

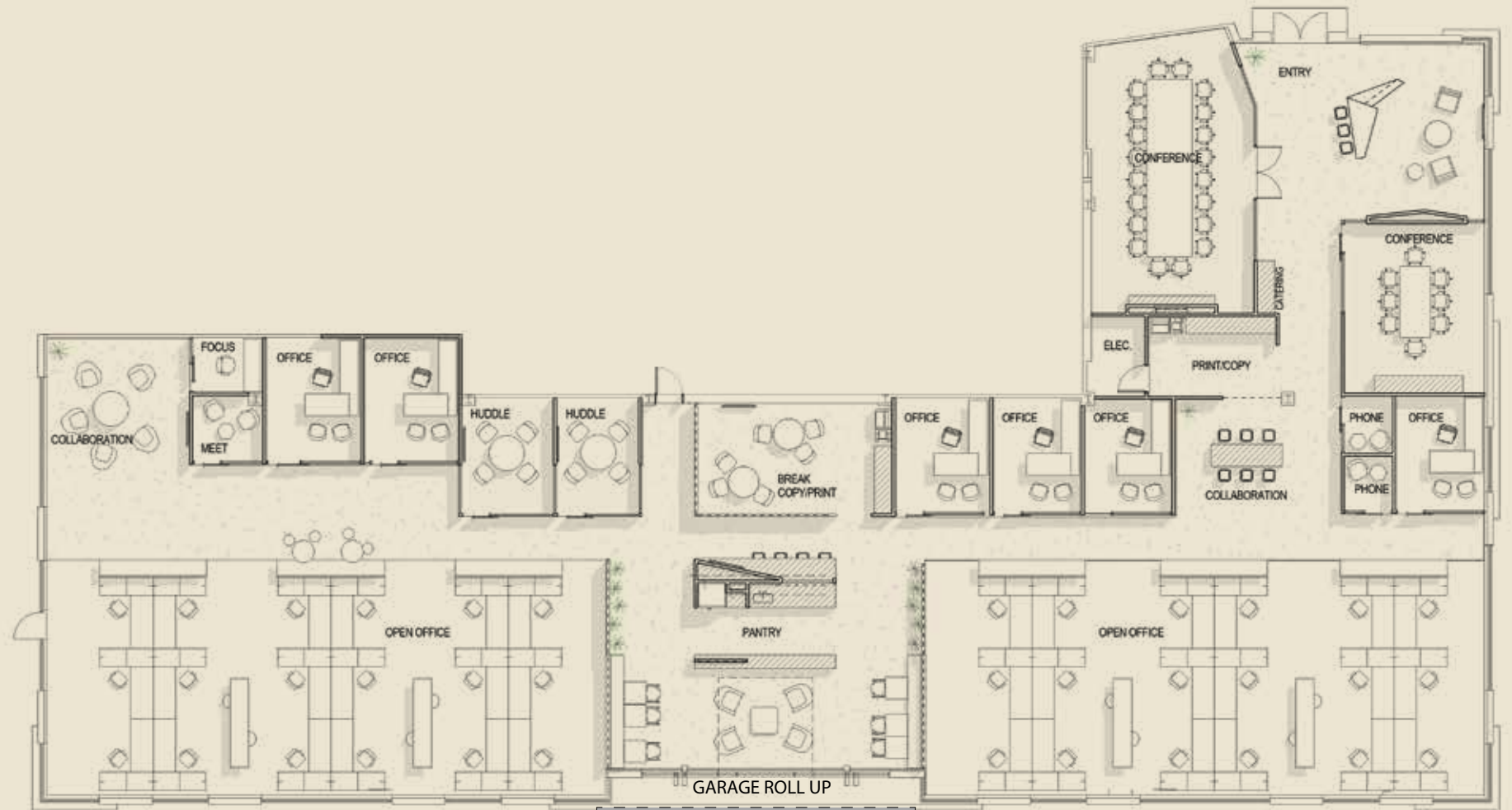
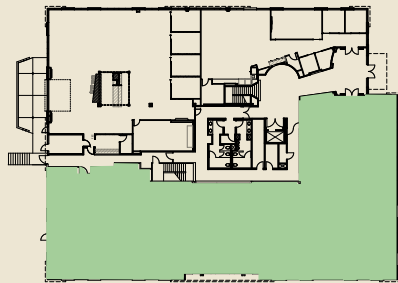


↓ Views of  
Torrey Pines Reserve



# FLOORPLAN & CURRENT AVAILABILITY

3394 BUILDING | SUITE 100/130 | 11,251 SF  
(HYPOTHETICAL PLAN)



↓ Views of  
Torrey Pines Reserve

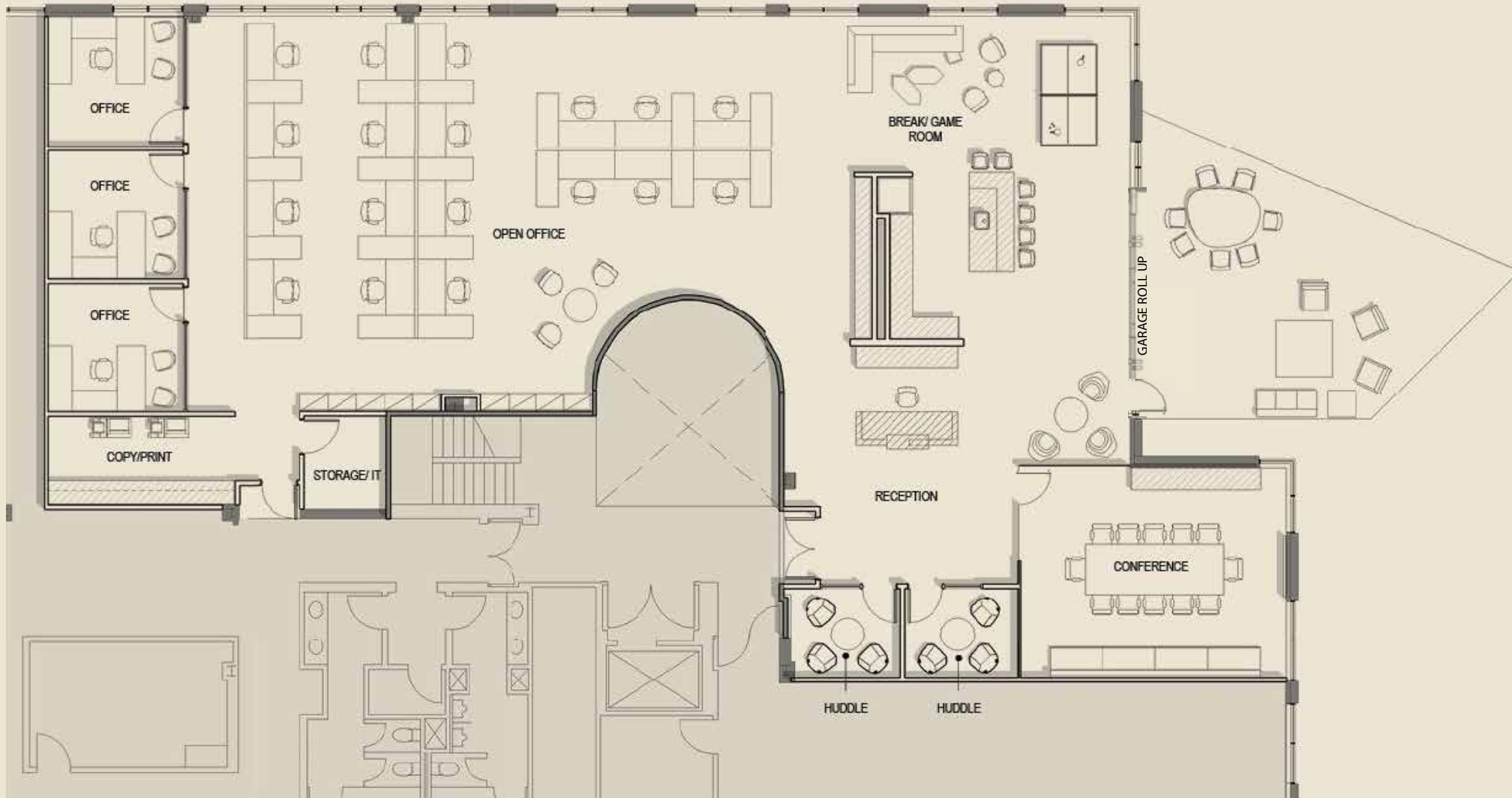
Semi-private patio





# FLOORPLAN & CURRENT AVAILABILITY

3394 BUILDING | SUITE 250 | 5,720 SF  
(AS-BUILT)



# FLOORPLAN & CURRENT AVAILABILITY

3398 BUILDING | SUITE 250 | 5,000 - 13,463 SF | \$3.55/SF +E

