

NEW LISTING

# FOR SALE

## 3.67 +/- Acre Commerical Site

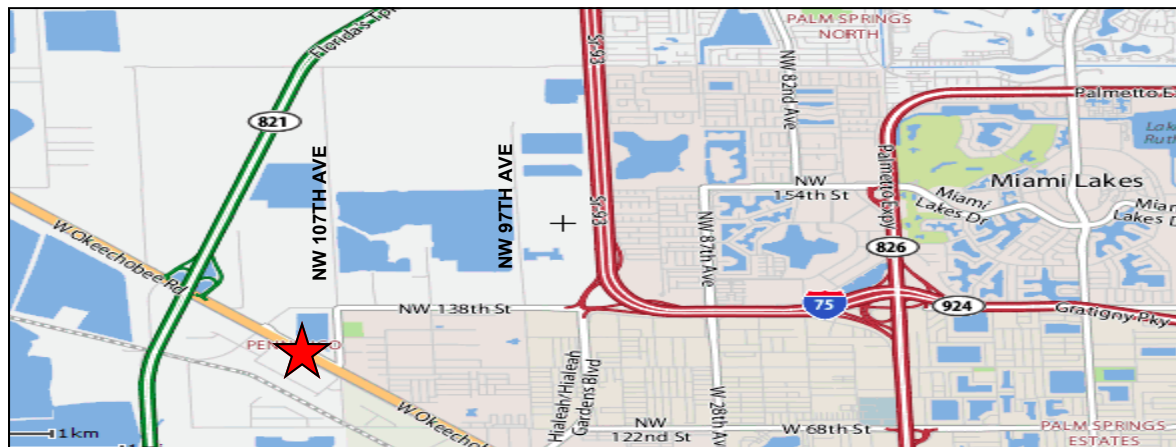
**HIALEAH GARDENS**



### 13391 West Okeechobee Road, Hialeah Gardens

- 482 +/- Linear Feet Frontage on Okeechobee Road
- Cross Access Easement with Home Depot
- Zoned BU-3, Commercial Business District, Hialeah Gardens
- Water/Sewer available - Subject to verification
- Out of Wellfield Area
- Located within Shoma Commerce Park
- Immediate access to US-27 Florida Turnpike, State Road 826, and I-75

**PURCHASE PRICE: \$4,500,000.00 (\$28.15 PSF)**



CONTACT:

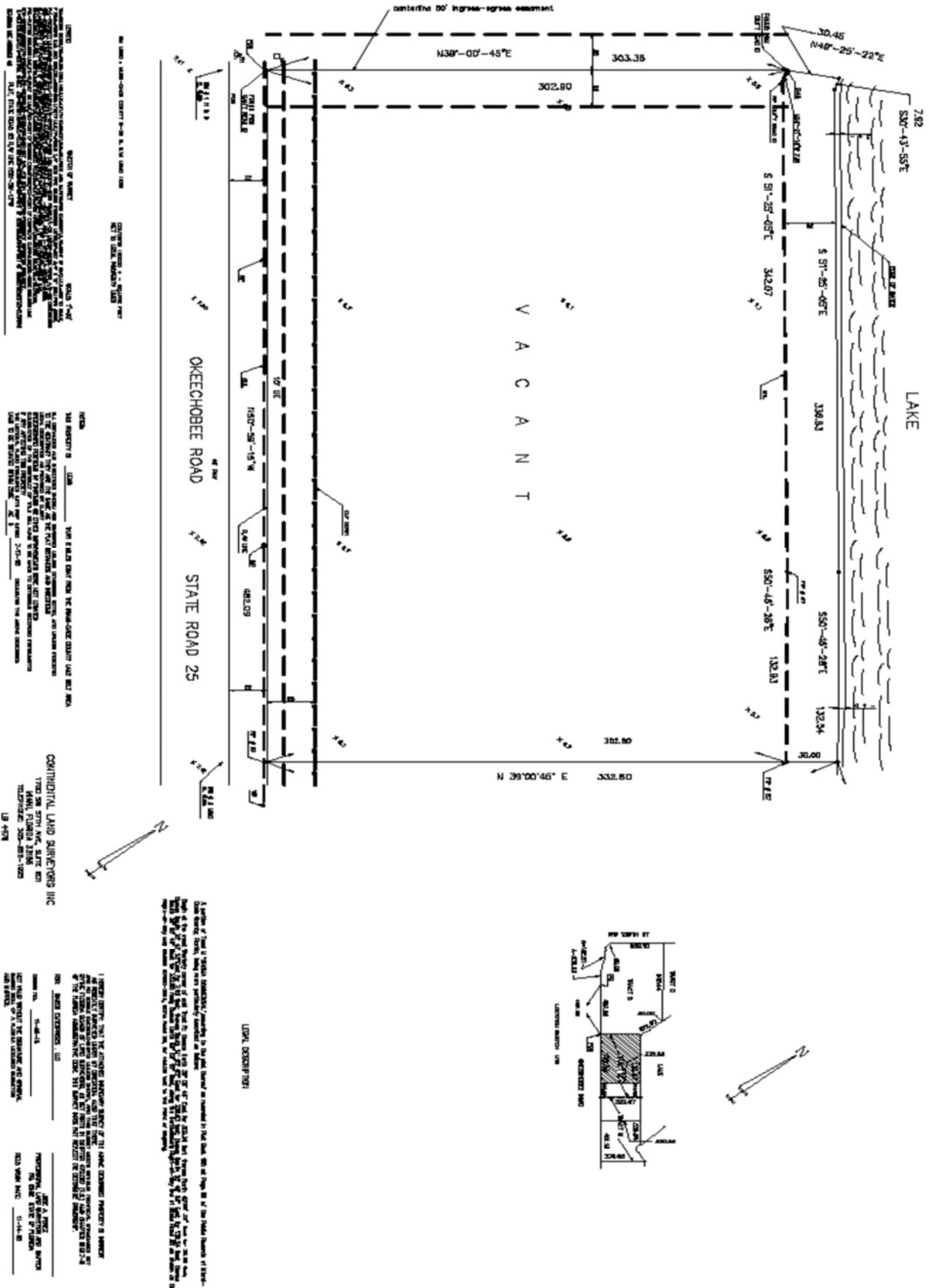


Jorge A, Davila, P.A.  
Phone: (305) 717-1880  
Cell: (305) 776-2166  
www.thekatsikosgroup.com

The Katsikos Group, Inc.  
Licensed Real Estate Broker  
8669 NW 36 Street, #315  
Miami, Florida 33166

Any information herewith is obtained from sources we consider reliable. However, we are not responsible for misstatement of facts, errors, omissions, prior sale, withdrawal from market, modification of mortgage commitment, terms and conditions or change in price without prior notice. The information supplied herein is for informational purposes only and shall not constitute a warranty of assurance that said information is correct. Any person intending to rely upon the information supplied herein should verify said information independently.

# Survey



Any information herewith is obtained from sources we consider reliable. However, we are not responsible for misstatement of facts, errors, omissions, prior sale, withdrawal from market, modification of mortgage commitment, terms and conditions or change in price without prior notice. The information supplied herein is for informational purposes only and shall not constitute a warranty of assurance that said information is correct. Any person intending to rely upon the information supplied herein should verify said information independently.

## SORROUNDING AREA WITH PROPOSED DEVELOPMENT

