



## RSR REALTORS®

3 Lemoyne Drive, Suite 100  
Lemoyne, PA 17043

Phone: (717) 763-1212  
Fax: (717) 763-1656

# FOR SALE- 58.31 acres for Residential Development

481 Longview Drive, Middletown, PA 17057



### Pricing Information

**Sale Price:** \$3,100,000

### Site Data

**Tax Parcel:** 36-002-003

**Township:** Lower Swatara

**County:** Dauphin

**School District:** Middletown

**Zoning:** R-S (Residential Suburban)

**Topography:** Flat

### Utilities

**Water:** Public

**Sewer:** Public

### Comments

- Great opportunity for Residential Development in Lower Swatara Township
- Tract borders single family development, Old Reliance Farms, to the west
- Preliminary plan on following page showing 222 units
- 250 EDUs have been reserved for tract
- TND (Traditional Neighborhood Development) has been approved for site via special exception

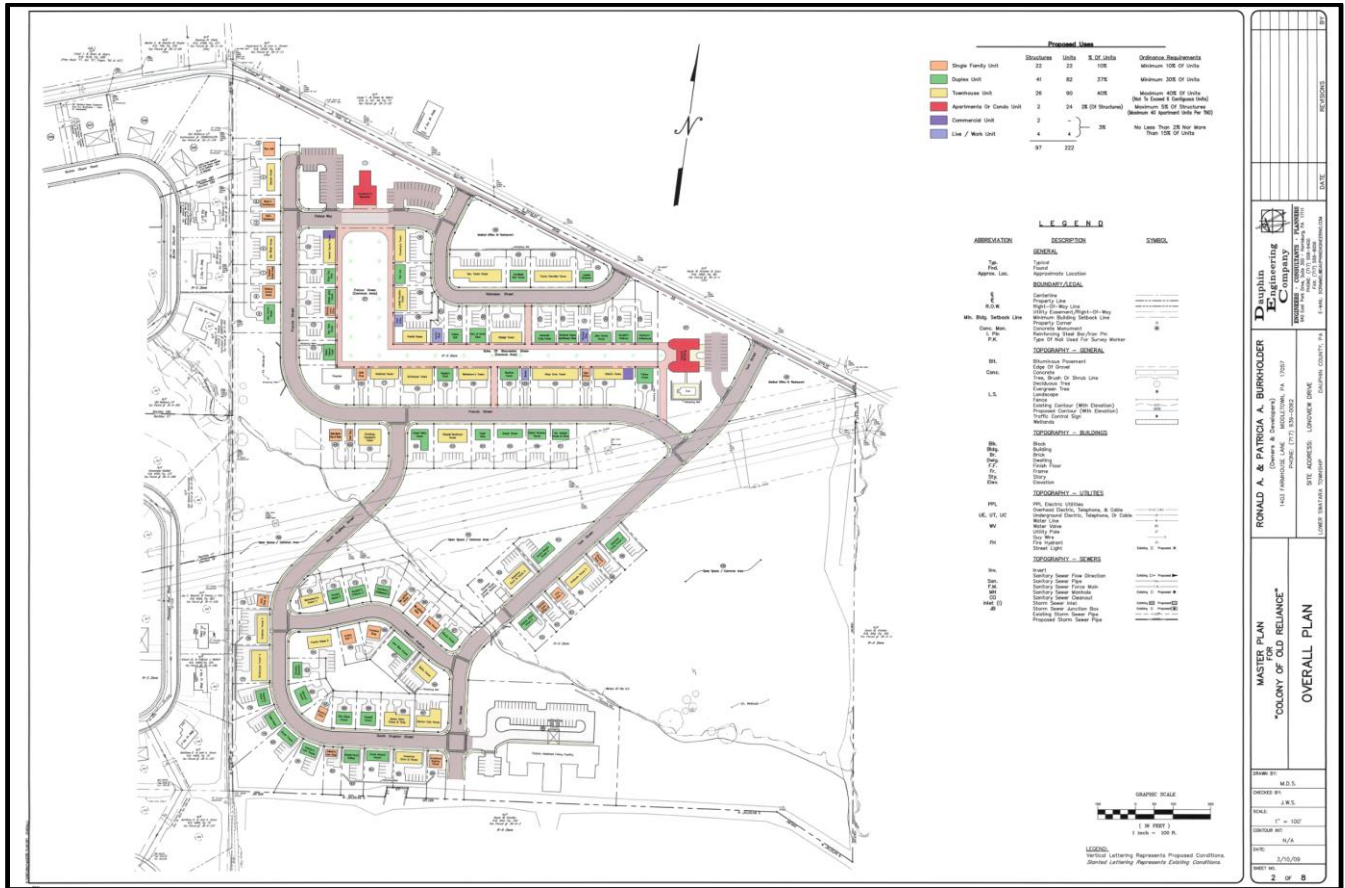
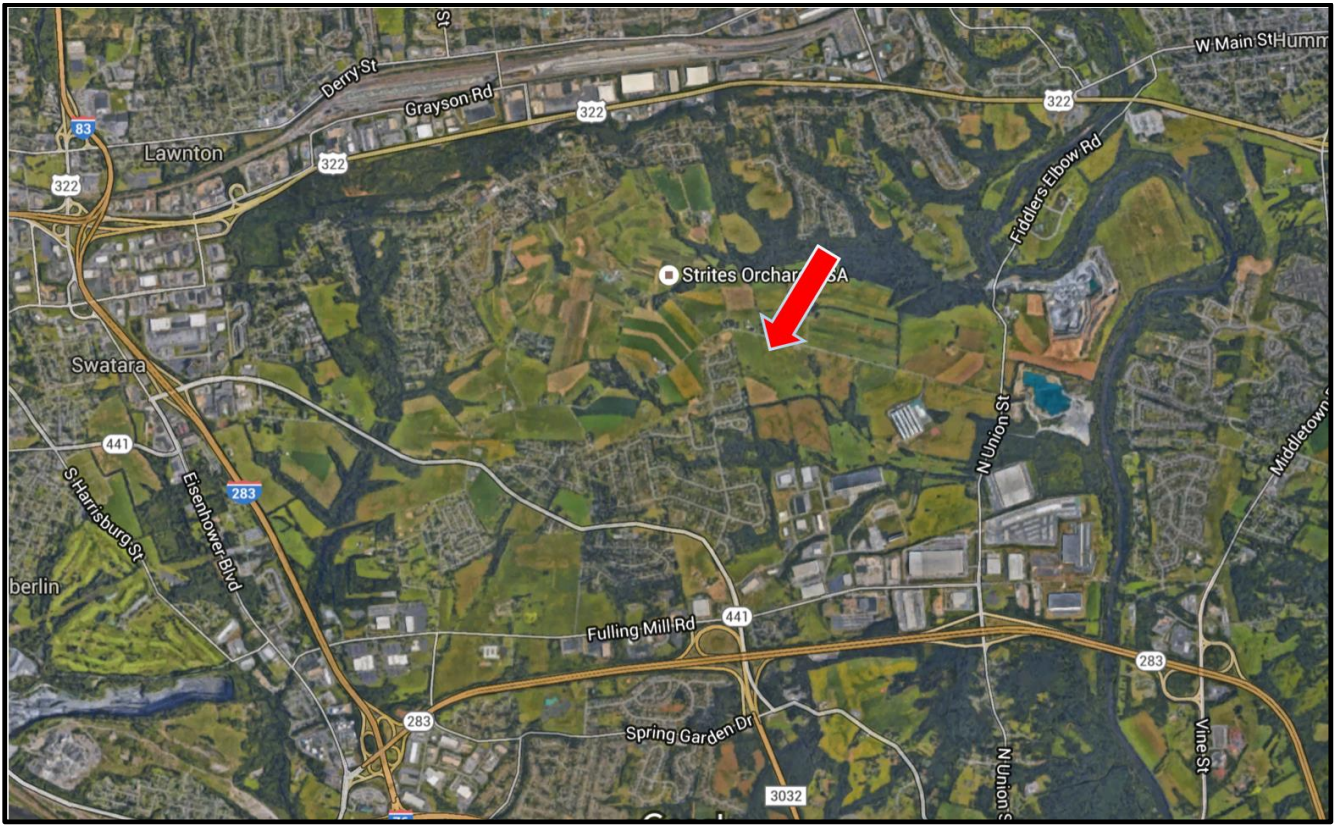
### Directions To Site

322 East, right onto Mushroom Hill Road, right onto Chambers Hill Road, left onto Strites Road, left onto Longview Drive, property on right

### Contact Information

Jim Koury	jkoury6294@aol.com	(717) 439-2115
Jimmy Koury	jhkoury@rsrrealtors.com	(717) 215-0917
Jeff Koury	jeffkoury@rsrrealtors.com	(717) 439-2047

*The information, though deemed reliable, is herein not warranted and is subject to correction, revision, verification and change without notice. RSR REALTORS®, its agents and employees assume no liability for any errors or omissions, change of price, prior sale or lease, other unforeseen conditions or withdrawal without notice. RSR REALTORS® is working on behalf of the seller/lessor unless otherwise stated*



**DAUPHIN ENGINEERING COMPANY, INC.**  
 1405 HARRISBURG BLVD., SUITE 200  
 HARRISBURG, PA 17107  
 PHONE: 717-533-5000  
 FAX: 717-533-5001  
 WWW: WWW.DAUPHIN-ENG.COM

**RONALD A. & PATRICIA A. BURKHOLDER**  
 Owners & Investors  
 1405 HARRISBURG BLVD., SUITE 200  
 HARRISBURG, PA 17107  
 PHONE: 717-533-5000  
 FAX: 717-533-5001  
 WWW: WWW.DAUPHIN-ENG.COM

**MASTER PLAN  
 "COLONY OF OLD RELIANCE"  
 OVERALL PLAN**

DATE: 1/10/20  
 DRAWN BY: M.D.S.  
 CHECKED BY: S.W.S.  
 SCALE: 1" = 100'  
 SHEET NO.: 1/4  
 DATE: 1/10/20  
 SHEET NO.: 2 OF 8