

For Sale

380± Acres

Wayne County, Utah



Historic Ghost Town

Giles, Utah

Property Features

- Flowing Artesian Well on Property
- Located Near Capitol Reef National Park
- 15 Minutes from Caineville and Hanksville
- One of the Few Private Parcels in the Area
- Remote Desert Location
- ATV & Bike Heaven, Rock Climbing and Hounding
- Only Land for Sale
- No City Water or Sewer
- Power is Located Within .5 Mile of Property



ACRES

380± AC

SALE PRICE - \$290,000

For more information:

Mat Chappell

o 435 628 1609 • t 435 627 5701

f 435 627 5703 • mchappell@naiutahsouth.com

NO WARRANTY OR REPRESENTATION, EXPRESS OR IMPLIED, IS MADE AS TO THE ACCURACY OF THE INFORMATION CONTAINED HEREIN, AND THE SAME IS SUBMITTED SUBJECT TO ERRORS, OMISSIONS, CHANGE OF PRICE, RENTAL OR OTHER CONDITIONS, PRIOR SALE, LEASE OR FINANCING, OR WITHDRAWAL WITHOUT NOTICE, AND OF ANY SPECIAL LISTING CONDITIONS IMPOSED BY OUR PRINCIPALS NO WARRANTIES OR REPRESENTATIONS ARE MADE AS TO THE CONDITION OF THE PROPERTY OR ANY HAZARDS CONTAINED THEREIN ARE ANY TO BE IMPLIED.

243 E St George Blvd, Suite 200

St George, Utah 84770

t 435 628 1609

naiutahsouth.com

8527

380± acres

HISTORIC GILES TOWNSITE

Wayne County, Utah Section 20, township 28, range 10 east, S.L.B. & M.

Mile post 110, Utah State Route Highway 24, 15 minutes between Caineville and Hanksville, Wayne County, UT

GPS Coordinate 38° 21' 17.21" N, 110° 51' 13.96" W

Altitude 4,446 Feet

The Historic ghost town of Giles sits precariously in the middle of the breathtakingly barren and stark Blue Valley which takes its name from the surrounding blue clay in the area. With few remaining partial buildings, Giles can be found at Milepost 110 along Utah State Route 24 about fifteen miles between Caineville and Hanksville in remote and wild Wayne County, UT.

The first settler in Blue Valley was Hyrum Burgess and his family who settled on the north side of the river in 1883. Hite Burgess is credited with surveying the first dam and three-mile irrigation canal in 1884 using "a wooden tripod and plumb bob". The dam was made of rock and brush. After a short time a flash flood washed the dam away. Watching their hard work vanish before their eyes dampened their spirits but they continued to bring irrigation water to Blue Valley.

In June of 1895, a town site south of the Fremont River was laid out and dedicated with fifty original parcels of land, four short streets, and two long streets. A bridge was used to cross the river from the main county road into the town of Giles. At this time, the town name of Giles was chosen in honor of Henry Giles, the first Latter-Day Saint Bishop.

Another dam was built high enough to get the water into the ditches and, due to this success other settlers came to live in Blue Valley Giles in March of 1887. The town folk had outgrown the log cabin building and by the late 1890's, the citizens united and constructed a larger more comfortable building. The 70 x 40 foot building was made of adobe material that came from the river banks a mile away. The townsfolk mixed the mud while Niels Nielson shaped the textured adobes for which he was paid in molasses, honey, corn, pigs, and a horse. The roof and other wooden features were made from half-timber hauled from the nearby mountains. The county wide noted "splendid adobe meeting house" had beautiful tongue and groove flooring, nice wood benches, and a high pitched cedar shingle roof. Town meetings, dances, and local and regional church meetings were held in this largest meeting house in Wayne County, UT.

The ninety plus families of Giles in Blue Valley began to desert and move out after devastating and repeated flooding that occurred in 1909 and 1910. Jonathan Hunt was one of the last people to stay in Giles. Mr. Hunt died in Giles in 1922 and is buried between his two wives (Mary Ann Hughes and Josephine Chidester) along with one child in the Giles Cemetery.

Today, Utah State Highway 24 holds the double access to the historic ghost town of Giles. Today, vehicle access across the river is available by fording the river at mile marker 106. The easy access across the river is lined with a concrete pad for easy vehicle access except in times of flooding.

GILES/HANKSVILLE, UTAH
Period of Record Monthly Climate Summary

Period of Record: 3/ 1/1910 to 11/9/2012

	Jan	Feb	Mar	Apr	May	Jun	Jul	Aug	Sep	Oct	Nov	Dec	Annual
Avg. Max. Temperature (F)	40.9	49.4	60.7	70.8	81.3	92.4	98.2	94.8	85.8	72.1	55.9	43.4	70.5
Avg. Min. Temperature (F)	10.9	19.2	28.1	36.1	44.8	53.2	60.8	58.0	48.2	35.6	22.7	14.1	36.0
Avg. Total Precipitation (in.)	0.38	0.27	0.41	0.41	0.45	0.32	0.55	0.76	0.67	0.73	0.39	0.32	5.66
Avg. Total Snow Fall (in.)	2.1	1.1	0.7	0.1	0.0	0.0	0.0	0.0	0.0	0.2	1.0	2.0	7.1
Avg. Snow Depth (in.)	1	1	0	0	0	0	0	0	0	0	0	0	0

Historic Giles Townsite of 1899

Restoration Project, Approved Sept. 2004

by the Wayne County Commission...

info. @ www.oldbluevalley.com

Cainsville, Ut.

10 miles

Wild Horse Butte

@ Goblin Valley State Park

Hanksville, Ut.

10 miles

Fremont River

Historic
Giles
 Townsite

640 Acres / 320 lots

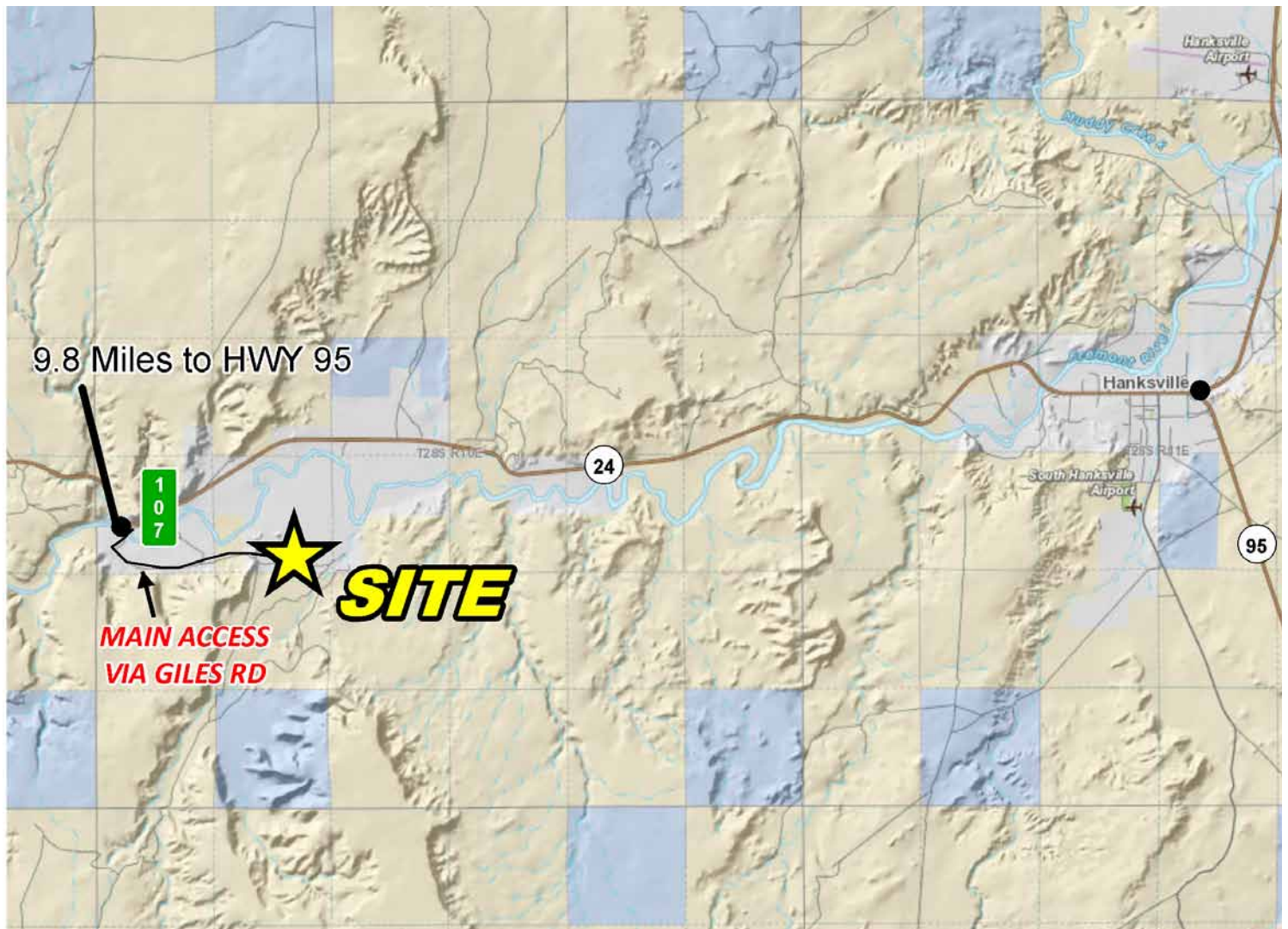
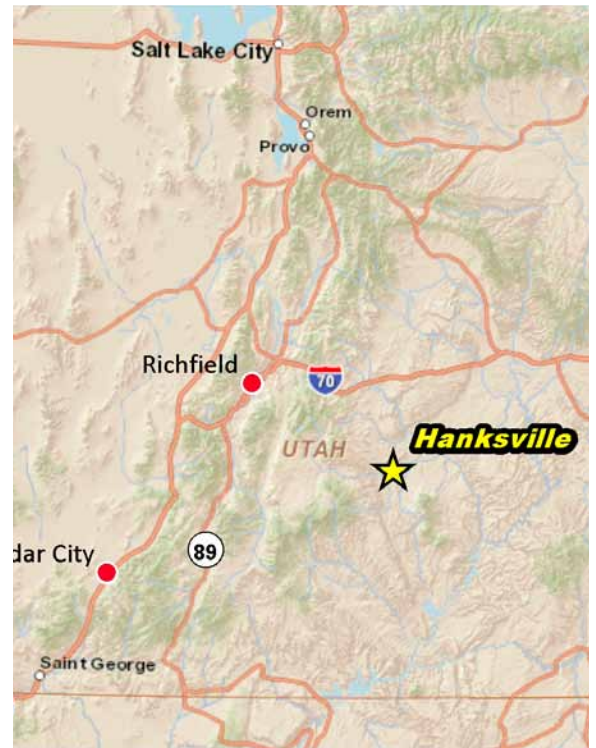
Artesian Well

Cemetery

Steamboat
 Point

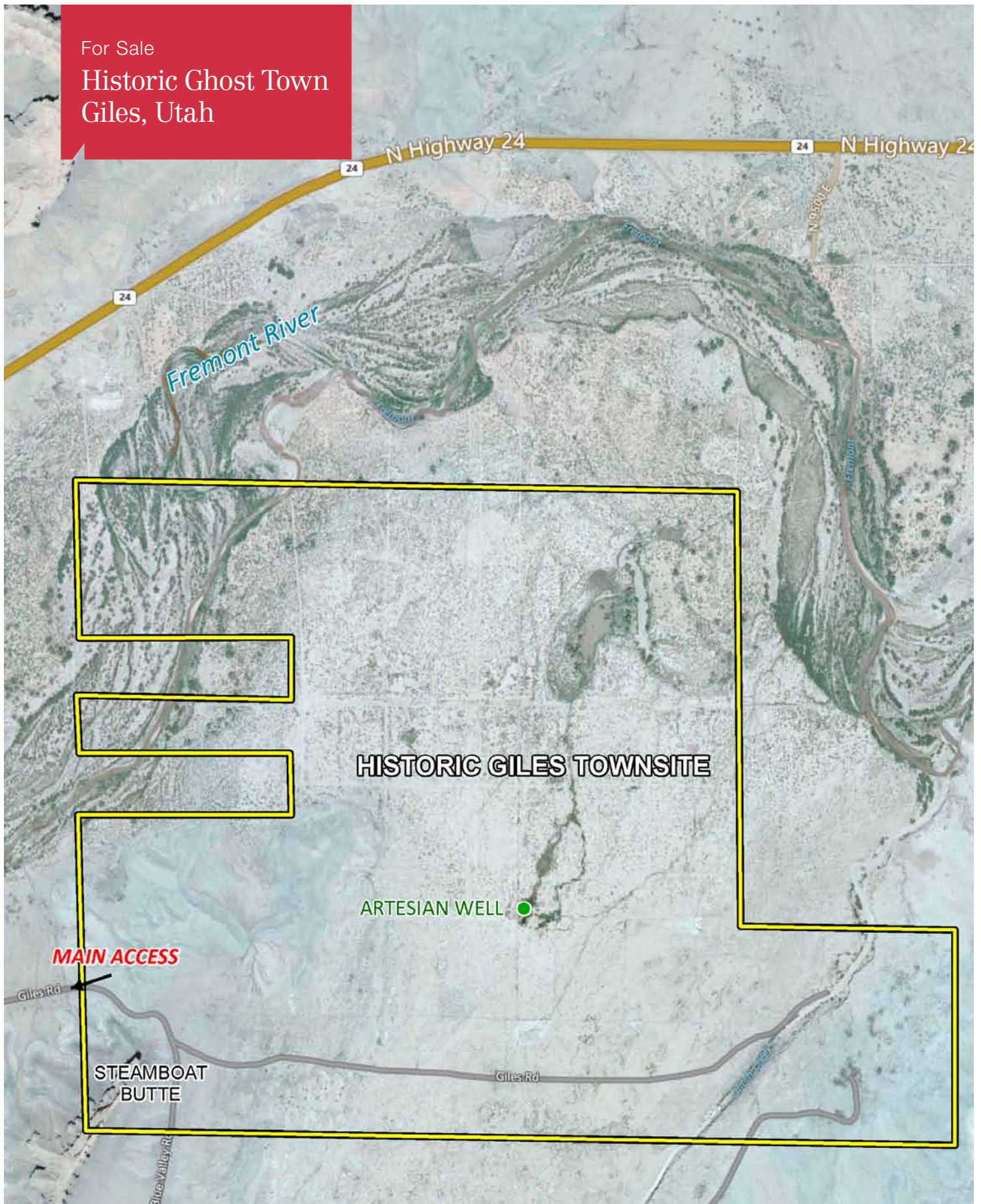
Henry M.
 Access

For Sale
Historic Ghost Town
Giles, Utah



For Sale

Historic Ghost Town Giles, Utah



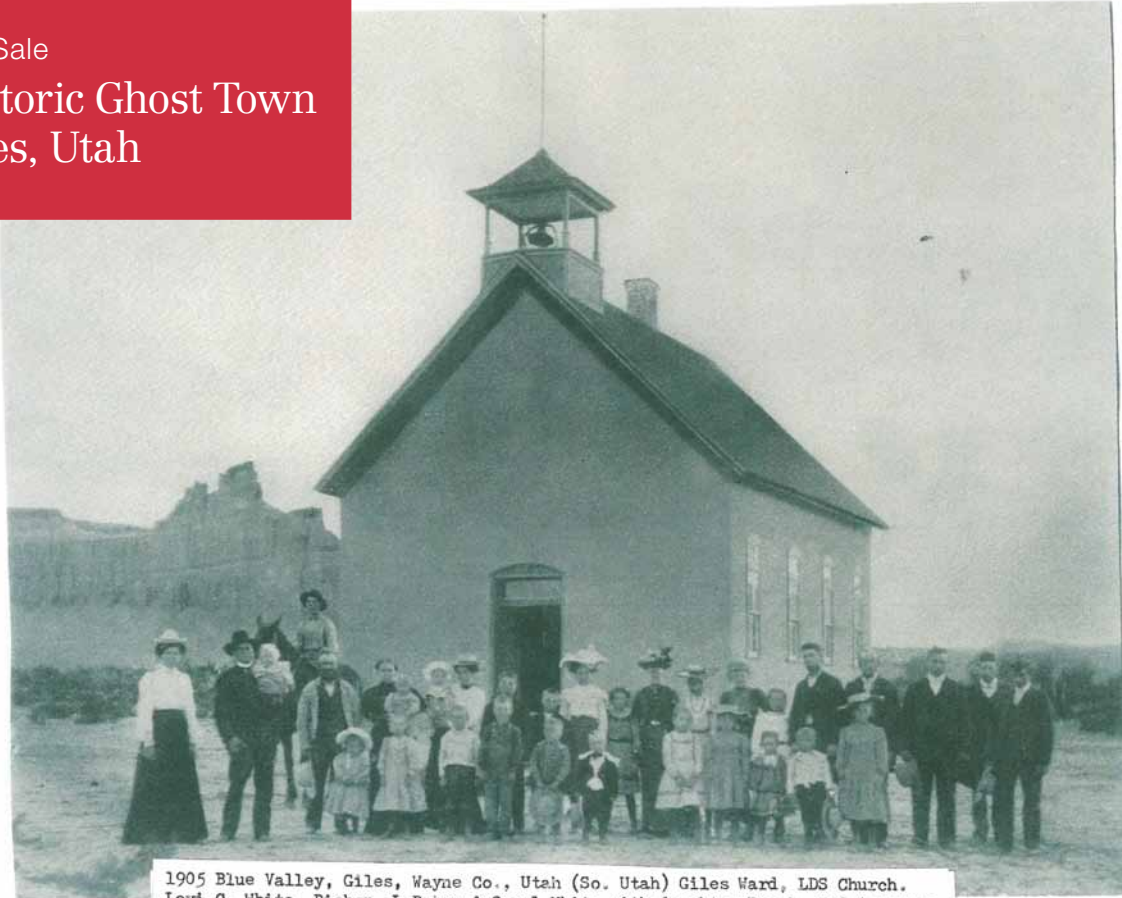
For Sale

Historic Ghost Town Giles, Utah



For Sale

Historic Ghost Town Giles, Utah



1905 Blue Valley, Giles, Wayne Co., Utah (So. Utah) Giles Ward, LDS Church.
Levi C. White, Bishop. L-R Ann & Oscar White with daughter Pearl, Ted & Lizzie
White Abbott. Center lady dark dress Mary Ann Ingram White, Great-great Grand-
Mother. Others are mostly Abbotts, Mayhews & Whites.



For Sale

Historic Ghost Town Giles, Utah



Driving Distance to Major Cities from Property

SALT LAKE CITY, UT	196 miles
LAS VEGAS, NV	333 miles
DENVER, CO	450 miles
LOS ANGELES, CA	598 miles
SAN FRANCISCO, CA	807 miles
SEATTLE, WA	1,034 miles

Location Information

WAYNE COUNTY lies entirely within the colorful Colorado Plateau province and includes portions of Capitol Reef and Canyonlands National Parks. The Fremont River flows south into the county from Fish Lake and then east to join the Dirty Devil, a tributary of the Green River. The Green marks the county's eastern border.

Located in southeastern Utah, Wayne County is roughly 23 miles wide running north and south, and 105 miles long running east and west, and contains 2,475 miles, with 97% belonging to Federal and State Governments. There are about 2,500 people living in the county.

- POPULATION: Wayne County - 2,771
Loa - 571
- LAND AREA: 2,460 Square Miles
- ECONOMY: Median Income of \$38,572 with a Cost of Living Index of 85.5 and an Unemployment Rate of 7.7%
- HOUSING: Median house value of \$181,077

For more information:

Mat Chappell

o 435 628 1609 • t 435 627 5701
f 435 627 5703 • mchappell@naiutahsouth.com

Pat Chappell

o 435 628 1609 • t 435 627 5702
f 435 627 5703 • pmchappell@naiutahsouth.com

[CLICK HERE FOR MORE INFORMATION](#)