



*Achieve  
Ambitions*

MATT HUNTER  
EXEC. VICE PRESIDENT  
direct + 1 414 944 2115  
cell + 1 414 931 9931  
matt.hunter@am.jll.com

NICK HEPNER  
ASSOCIATE BROKER  
direct + 1 414 944 2107  
cell + 1 608 444 1675  
nick.hepner@am.jll.com

*OFFICE/RETAIL FOR LEASE*

# *600 North*

*BROADWAY STREET, MILWAUKEE*





# 600 North

BROADWAY STREET, MILWAUKEE

## SPECIFICATIONS

|                         |                               |
|-------------------------|-------------------------------|
| <b>Building size:</b>   | 23,796 s.f.                   |
| <b>Total available:</b> | 13,102 s.f.                   |
| <b>Suite 100:</b>       | 6,670 s.f. (Office or retail) |
| <b>Suite 200:</b>       | 6,432 s.f.                    |
| <b>Max. contig.:</b>    | 6,670 s.f.                    |
| <b>Rental rate:</b>     | \$19.00 - \$22.00 / s.f. MG   |
| <b>Floors:</b>          | 4                             |
| <b>Year built:</b>      | 1868 / 1876                   |

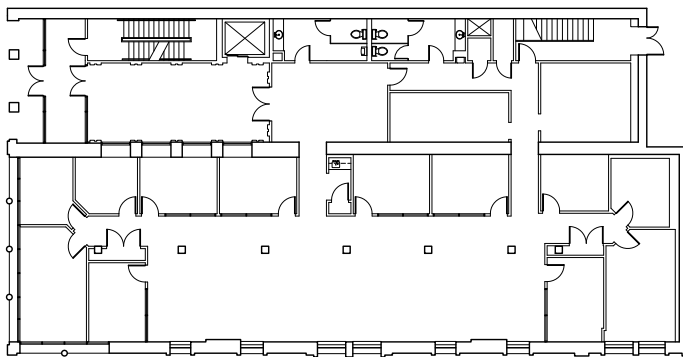
## FEATURES

- Located along the Milwaukee Stetcar Route
- High ceilings throughout the building
- Adjacent surface parking
- Prominently located within the Milwaukee CBD, between Wisconsin and Michigan Avenues

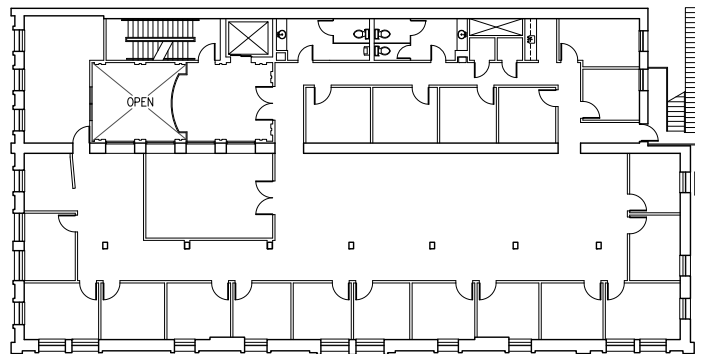
# AVAILABILITY

## FLOOR PLANS

**SUITE 100 | OFFICE OR RETAIL** 6,670 S.F.



**SUITE 200** 6,432 S.F.



DISCLAIMER: Although information has been obtained from sources deemed reliable, Owner, Jones Lang LaSalle, and/or their representatives, brokers or agents make no guarantees as to the accuracy of the information contained herein, and offer the Property without express or implied warranties of any kind. The Property may be withdrawn without notice. If the recipient of this information has signed a confidentiality agreement regarding this matter, this information is subject to the terms of that agreement. ©2018. Jones Lang LaSalle. All rights reserved.

MILWAUKEE  
STREETCAR ROUTE

E. STATE ST.

N. JACKSON ST.

CITY HALL

CATHEDRAL  
SQUARE

KILBOURN AVE.

N. JEFFERSON ST.

N. VAN BUREN ST.

E. WELLS ST.

GRAND AVENUE  
MALL

N. WATER ST.

N. BRADWAY

N. MILWAUKEE ST.

E. WISCONSIN AVE.

E. MICHIGAN ST.

RESIDENTIAL  
794

MILWAUKEE  
PUBLIC MARKET

OFFICE/RETAIL FOR LEASE

# 600 North

BROADWAY STREET, MILWAUKEE



MATT HUNTER, EXEC. VICE PRESIDENT  
direct + 1 414 944 2115  
cell + 1 414 931 9931  
matt.hunter@am.jll.com

NICK HEPNER, ASSOCIATE BROKER  
direct + 1 414 944 2107  
cell + 1 608 444 1675  
nick.hepner@am.jll.com