

# FOR LEASE IN CARY

5501 Dillard Drive (2nd Floor) – 12,341 SF Available  
(Can increase up to 26,000 SF)



## *Space Available Immediately*

*Approximately 12,341 SF of Class A office space located on the second floor.*

### **5501 Dillard Drive**

A two-story brick and glass, Class A office building with a total of 56,748 SF located in the Crossroads Corporate Park, a 133-acre mixed-use park.

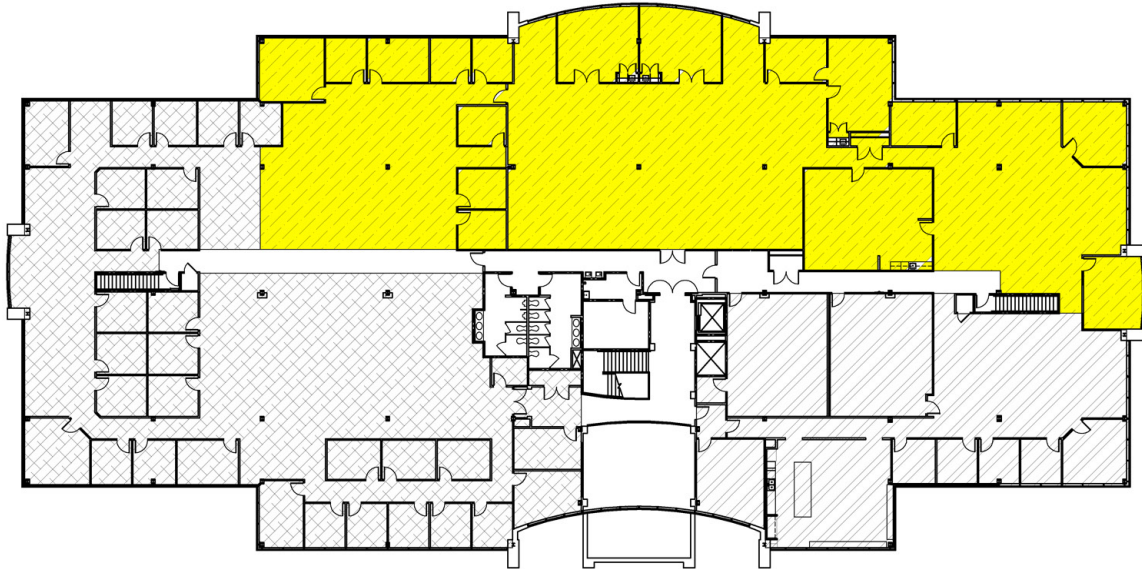
- ✦ Contemporary entry-level lobby features an elegant blend of marble and granite with inlaid carpet, and fabric wall covering.
- ✦ Existing second generation build-out with interior glass features, conference rooms, break and IT rooms, etc.
- ✦ Close proximity to retail, restaurants, hotels, apartments, fitness centers and highways.
- ✦ State-of-the-art energy management system with multi-zoned variable air volume HVAC.

*For more information, contact: Frank Baird 919.233.9901  
email [fbaird@casso.com](mailto:fbaird@casso.com) or visit [www.casso.com](http://www.casso.com)*

Information provided herein is secured from sources presumed to be reliable. However, all information is subject to verification.

# FOR LEASE IN CARY

5501 Dillard Drive (2nd Floor) – 12,341 SF Available  
(Can increase up to 26,000 SF)



- ✦ \$23.50 psf full-service asking rental rate.
- ✦ High-tech building design with above standard electrical and telephone/data capacity.
- ✦ 3.5 parking spaces per 1,000 sf leased.
- ✦ Water views.

*For more information, contact: Frank Baird 919.233.9901  
email [fbaird@casso.com](mailto:fbaird@casso.com) or visit [www.casso.com](http://www.casso.com)*

Information provided herein is secured from sources presumed to be reliable. However, all information is subject to verification.