

FOR LEASE

# OFFICE SPACE

1420

**AUGUSTINE LANE**

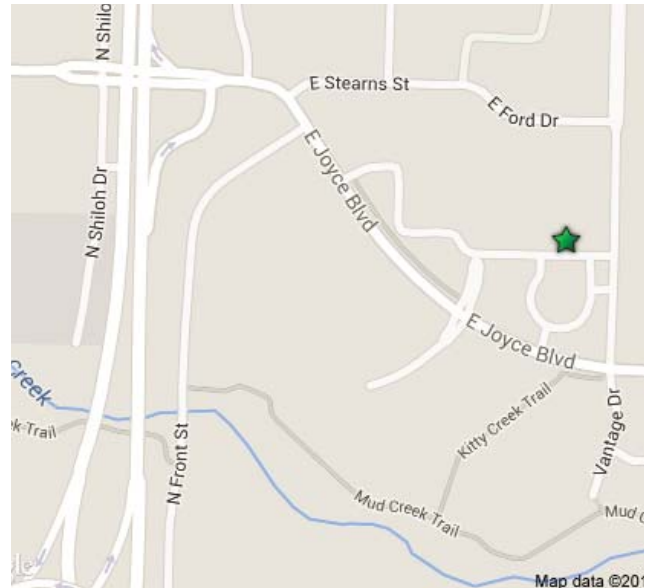
Fayetteville, AR 72703



## PROPERTY HIGHLIGHTS

Property is centrally located in the Bellafont development, a premier office and retail park in the heart of Fayetteville's business district. Co-tenants in this building are First National Title and Reliance Health Care.

- + \$19.00 PSF NNN
- + Up to 1,350± SF of Class A Office Space on the First Floor
- + Open Configurable Floor Plans
- + Ample Parking
- + Easy Access to Major Traffic Thoroughfares



## CONTACT US

### CLINTON BENNETT, CCIM

Vice President  
+1 479 301 2520  
clinton.bennett@cbre.com

### DAVID ERSTINE, CCIM

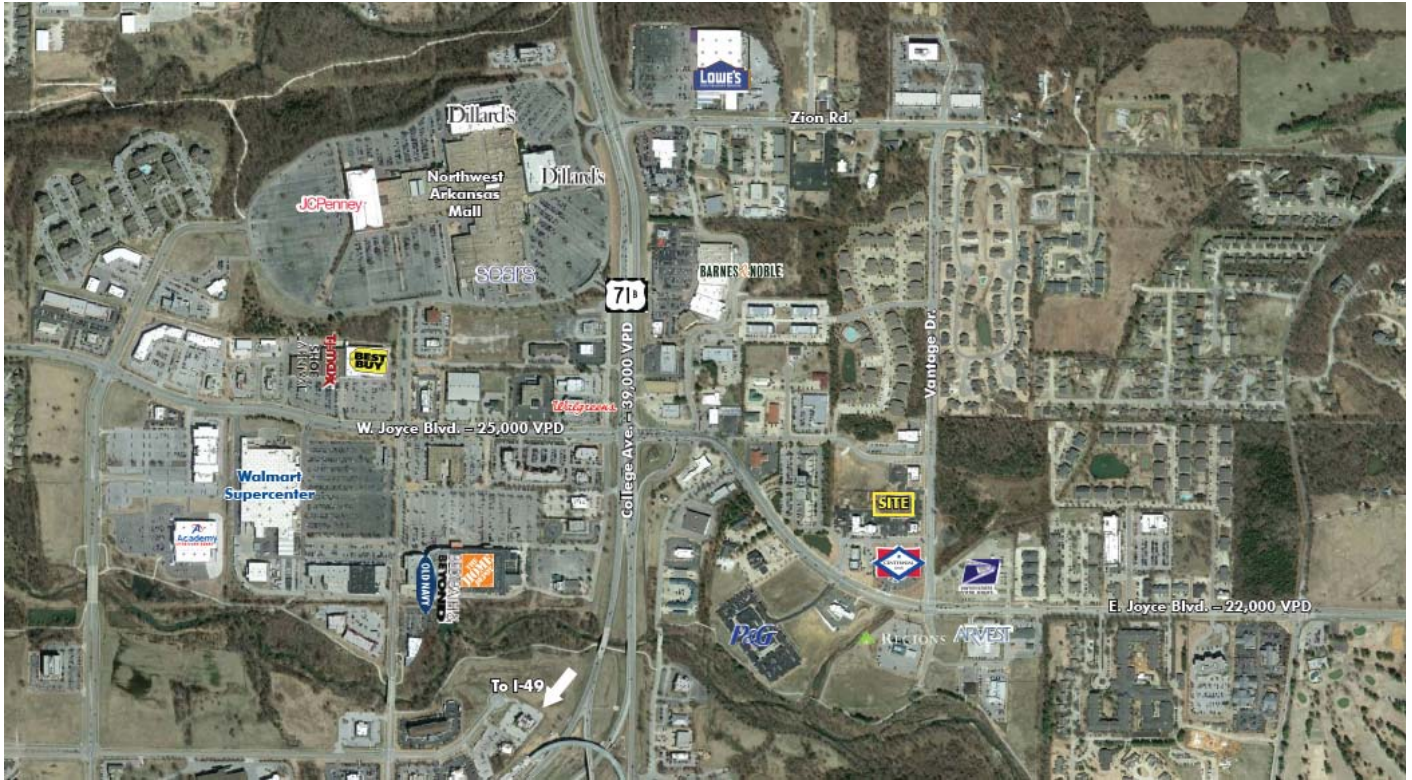
Vice President  
+1 479 301 2520  
david.erstine@cbre.com

[www.cbre.com/fayetteville](http://www.cbre.com/fayetteville)

**CBRE**

# FOR LEASE OFFICE SPACE

1420  
AUGUSTINE LANE  
Fayetteville, AR 72703



© 2015 CBRE, Inc. The information contained in this document has been obtained from sources believed reliable. While CBRE, Inc. does not doubt its accuracy, CBRE, Inc. has not verified it and makes no guarantee, warranty or representation about it. It is your responsibility to independently confirm its accuracy and completeness. Any projections, opinions, assumptions or estimates used are for example only and do not represent the current or future performance of the property. The value of this transaction to you depends on tax and other factors which should be evaluated by your tax, financial and legal advisors. You and your advisors should conduct a careful, independent investigation of the property to determine to your satisfaction the suitability of the property for your needs.

Photos herein are the property of their respective owners and use of these images without the express written consent of the owner is prohibited.