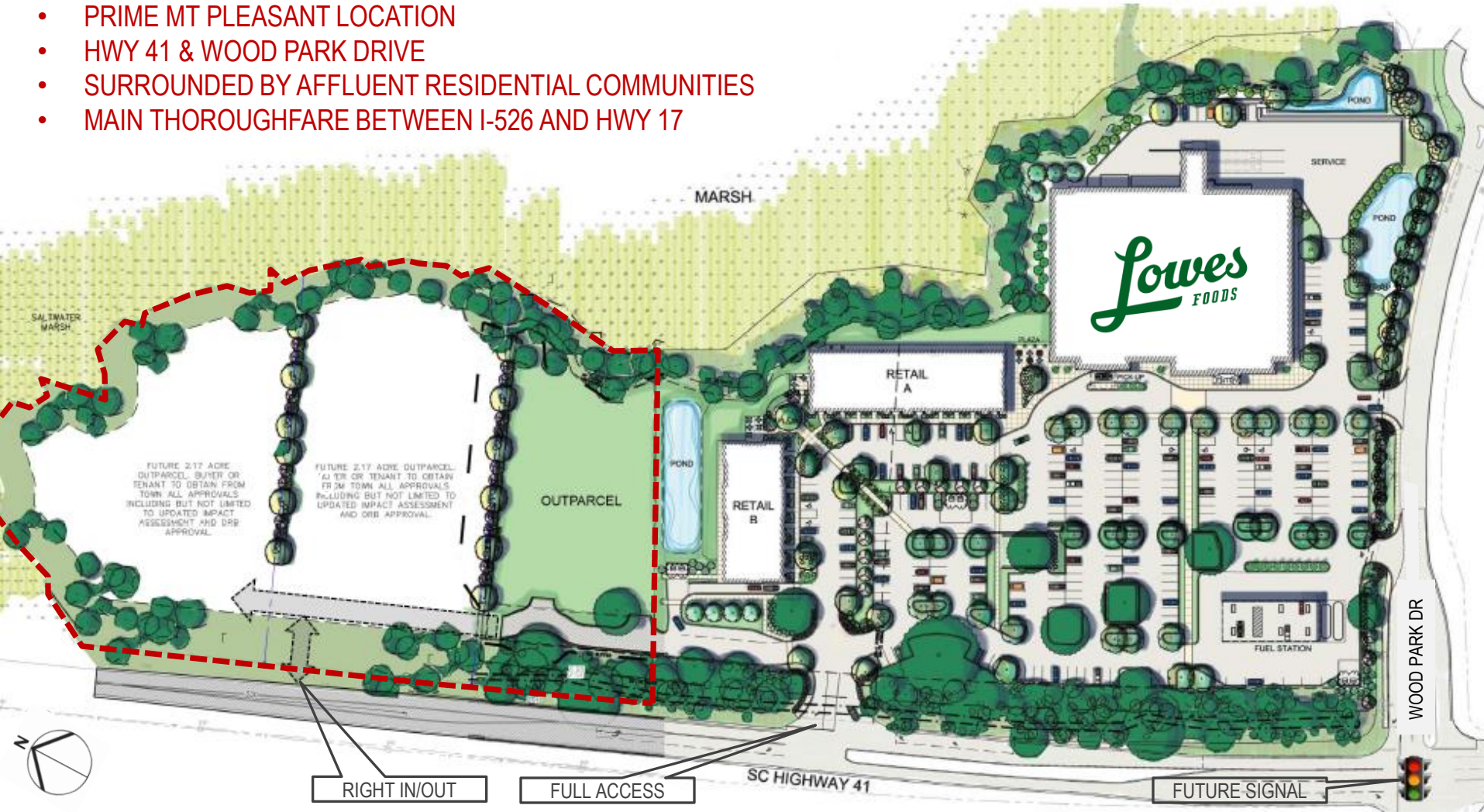


OUTPARCELS TO NEW SHOPPING CENTER – AVAILABLE FOR GROUND LEASE / SALE

- PRIME MT PLEASANT LOCATION
- HWY 41 & WOOD PARK DRIVE
- SURROUNDED BY AFFLUENT RESIDENTIAL COMMUNITIES
- MAIN THOROUGHFARE BETWEEN I-526 AND HWY 17



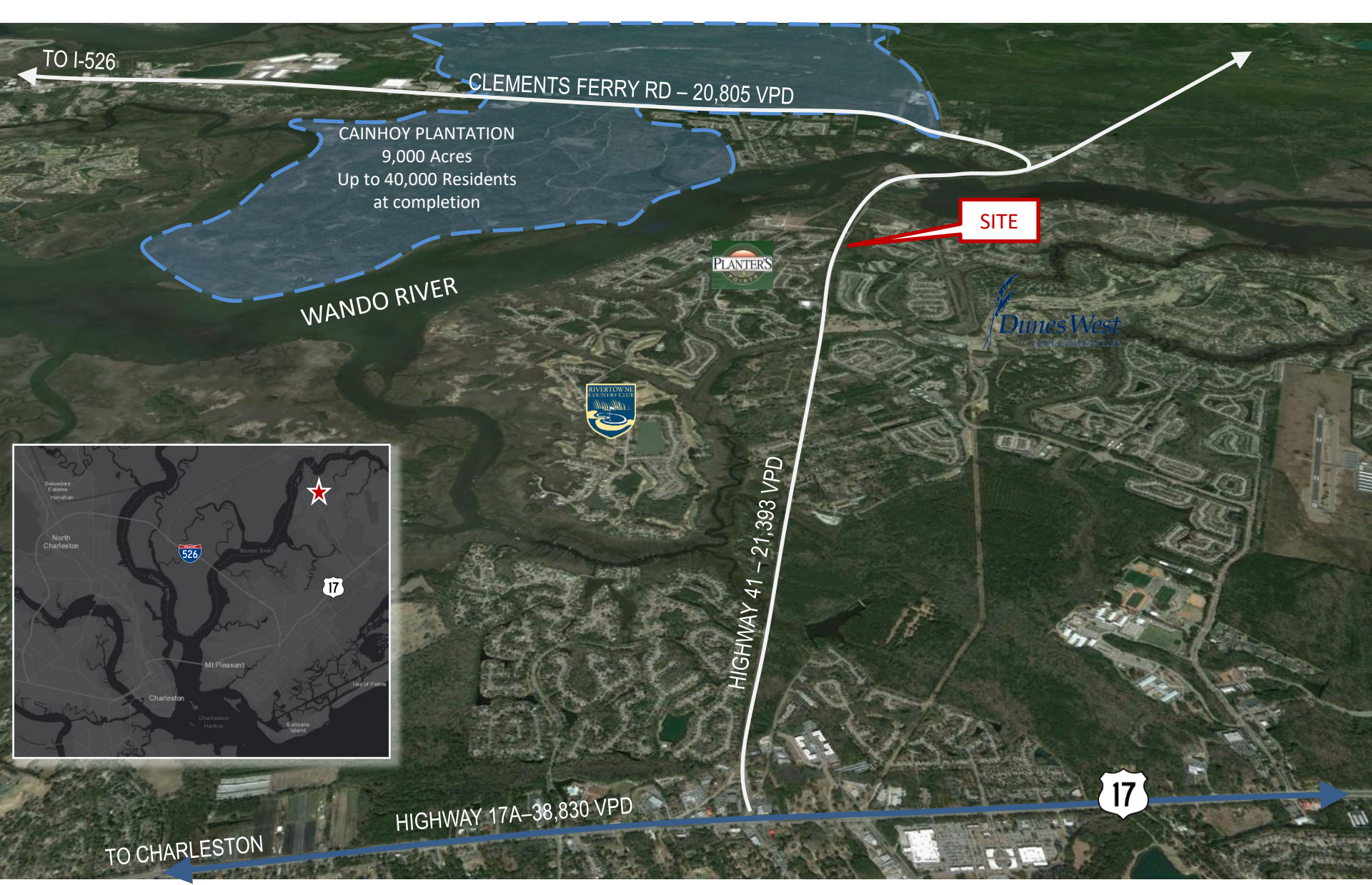
MARKETED BY:

ADAMS PROPERTY GROUP, LLC
2298 MT. PLEASANT ST.
CHARLESTON, SC 29403



CONTACT:

JACK COUPLAND
P | 843.941.4027
E | jcoupland@adamsprogroup.com



TO I-526

CLEMENTS FERRY RD - 20,805 VPD

CAINHOY PLANTATION
9,000 Acres
Up to 40,000 Residents
at completion

WANDO RIVER

SITE

PLANTERS
POINT

Dunes West
WITH A RIVER CLUB



HIGHWAY 41 - 21,393 VPD

HIGHWAY 17A - 38,830 VPD

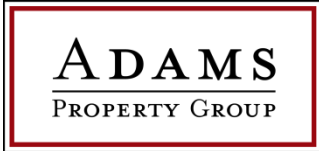


TO CHARLESTON



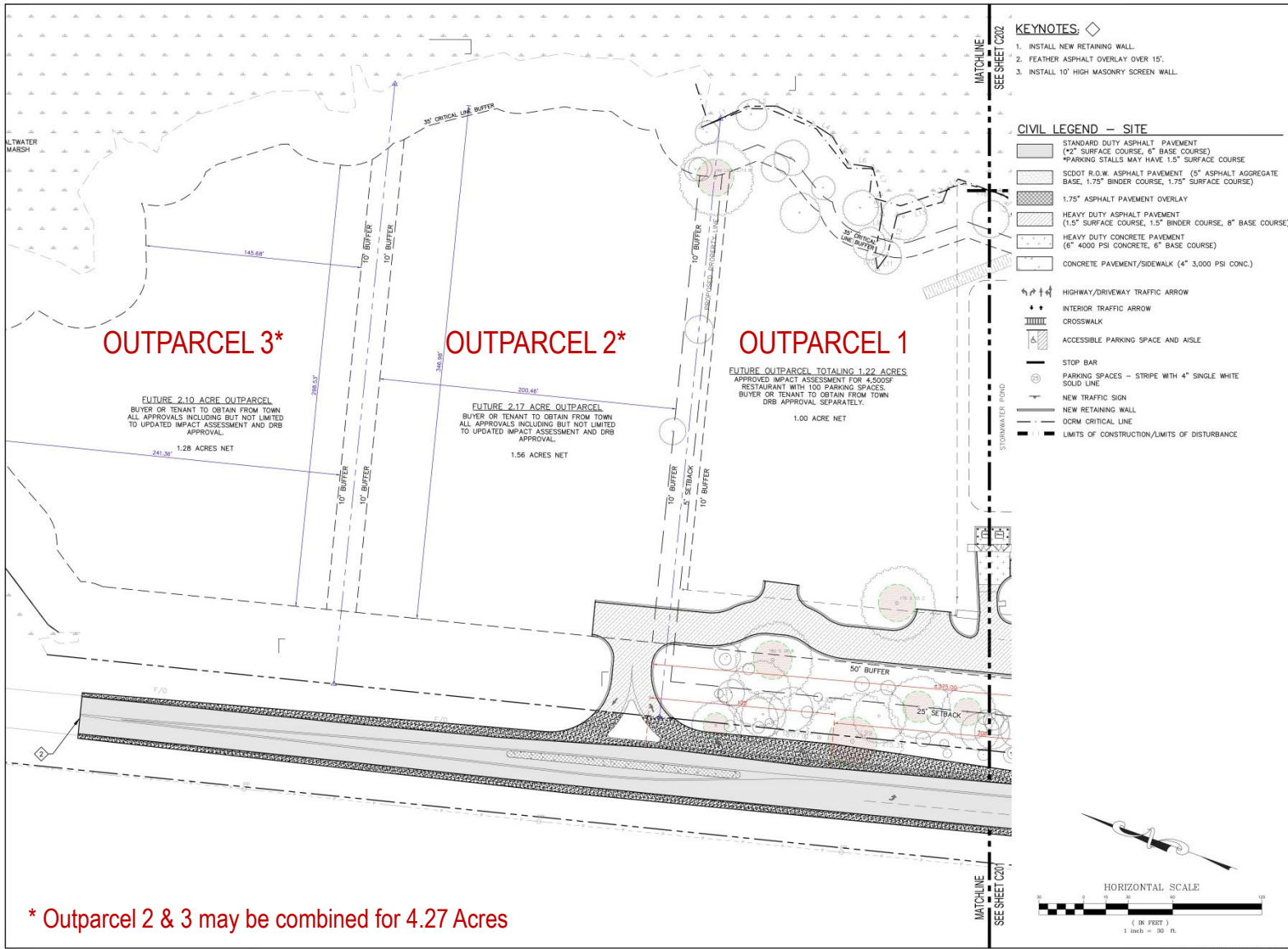
MARKETED BY:

ADAMS PROPERTY GROUP, LLC
2298 MT. PLEASANT ST.
CHARLESTON, SC 29403



CONTACT:

JACK COUPLAND
P | 843.941.4027
E | jcoupland@adamsprogroup.com



ADAMS
PROPERTY GROUP
Charleston, South Carolina

THE MARKET AT MILL CREEK
MOUNT PLEASANT
SOUTH CAROLINA

ADC
ENGINEERING SPECIALISTS
SITE SERVICES \ BUILDING ENVELOPE \ STRUCTURAL
1226 YEAMANS HALL ROAD
HAMANAN, SC 29410
843-564-0161
fax 843-564-0162
adcengineering.com

811
CONTRACTOR SHALL CONTACT BY
CALLING 811 FOR LOCATION OF ALL
UTILITIES AT LEAST 72 HOURS PRIOR TO
BEGINNING CONSTRUCTION
Know what's below.
Call before you dig.

DATE:	8/17/2016
ADC PROJECT #:	14350
DESIGNED:	JDO
CHECKED:	JKW
DRAWN:	SEP
REVISION:	

SITE PLAN -
AREA 3

C203
SHEET xxx OF xxx

PRELIMINARY DRB SUBMITTAL

MARKETED BY:
ADAMS PROPERTY GROUP, LLC
2298 MT. PLEASANT ST.
CHARLESTON, SC 29403



CONTACT:
JACK COUPLAND
P | 843.941.4027
E | jcoupland@adamsprogroup.com



MARKETED BY:

ADAMS PROPERTY GROUP, LLC
2298 MT. PLEASANT ST.
CHARLESTON, SC 29403



CONTACT:

JACK COUPLAND
P | 843.941.4027
E | jcoupland@adamsprogroup.com