

FOR LEASE

# MULTIPLE RETAIL BAYS AVAILABLE IN WESTLINK PARK

170 STREET & 107 AVENUE

Edmonton, AB T5P 4C3



## PROPERTY OVERVIEW

- + Immediate and build-to-suit options available
- + Multiple bay sizes starting from 1,313 sq. ft. to 2,689 sq. ft.
- + Join TD, Dairy Queen, My Fries, Fionn McCools, Lash Bar, and Sweet Convenience and more
- + Located on 170th Street with exposure to over 41,000 vehicles per day
- + Available immediately



<b>Address</b>	170 St & 107 Avenue, Edmonton
<b>Op Costs</b>	\$13.50 per sq. ft. / annum
<b>Lease Rate</b>	Market

[www.cbre.ca/edmonton](http://www.cbre.ca/edmonton)

**CBRE**

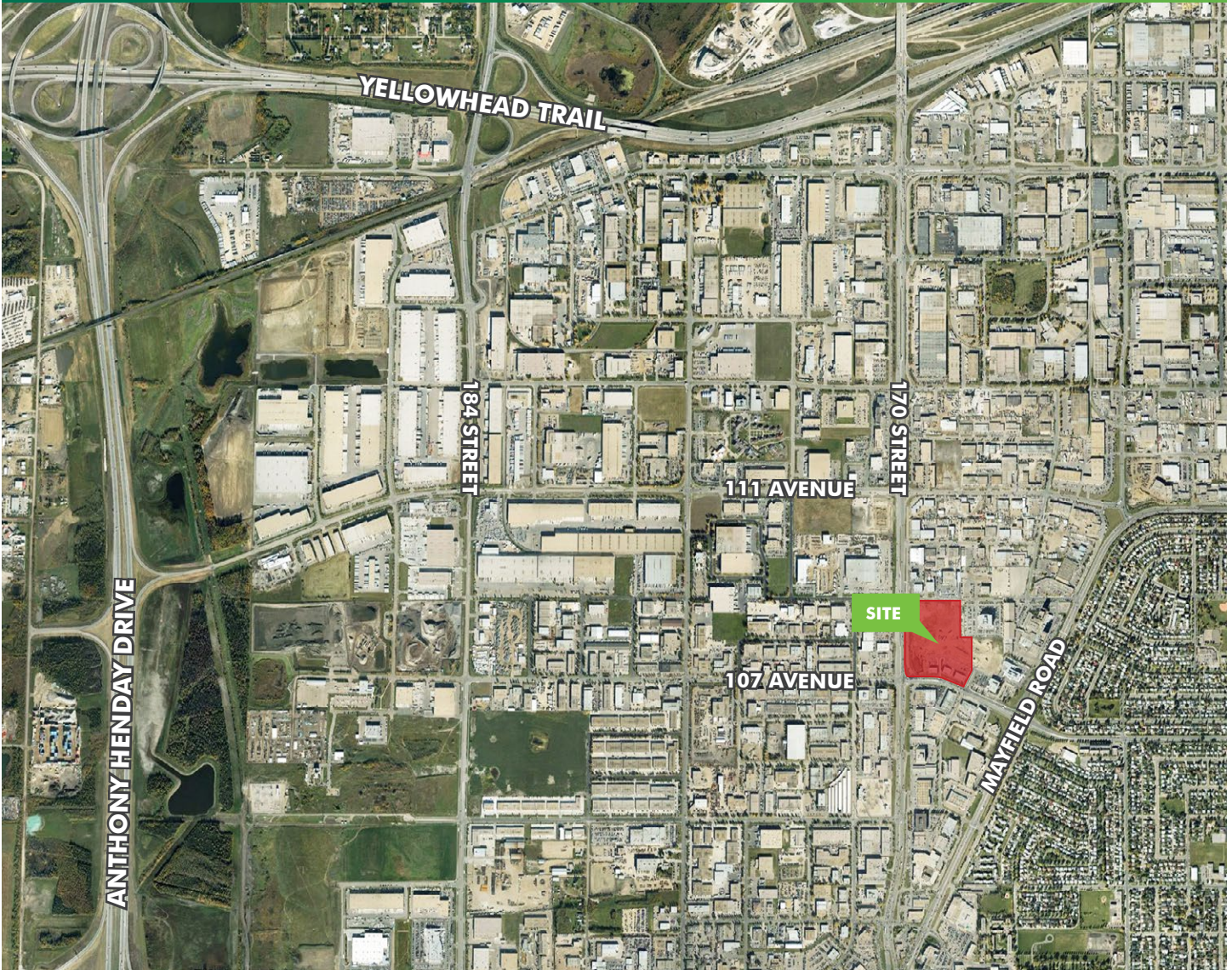
FOR LEASE  
**WESTLINK PARK**

170 STREET & 107 AVENUE  
 Edmonton, AB T5P 4C3



FOR LEASE  
**WESTLINK PARK**

170 STREET & 107 AVENUE  
Edmonton, AB T5P 4C3



**CONTACT US**

**JAMES YOUNG**

Associate Vice President  
1+ 780 917 4643  
james.young@cbre.com

**DANIEL YARMON**

Associate  
1+ 780 229 4650  
daniel.yarmon@cbre.com

This disclaimer shall apply to CBRE Limited, Real Estate Brokerage, and to all other divisions of the Corporation; to include all employees and independent contractors ("CBRE"). The information set out herein, including, without limitation, any projections, images, opinions, assumptions and estimates obtained from third parties (the "Information") has not been verified by CBRE, and CBRE does not represent, warrant or guarantee the accuracy, correctness and completeness of the Information. CBRE does not accept or assume any responsibility or liability, direct or consequential, for the Information or the recipient's reliance upon the Information. The recipient of the Information should take such steps as the recipient may deem necessary to verify the Information prior to placing any reliance upon the Information. The Information may change and any property described in the Information may be withdrawn from the market at any time without notice or obligation to the recipient from CBRE. CBRE and the CBRE logo are the service marks of CBRE Limited and/or its affiliated or related companies in other countries. All other marks displayed on this document are the property of their respective owners. All Rights Reserved.

[www.cbre.ca/edmonton](http://www.cbre.ca/edmonton)

**CBRE**