



Farmersville

Community Profile

Farmersville is located in Collin County



City Hall
205 N. Main Street
Farmersville, TX 75442
972-782-6151
www.farmersvilletx.com



City of Farmersville, County of Collin, State of Texas, located in North Texas, 45 miles Northeast of Dallas

POPULATION

2010 estimate: 3,301	County: 782,341
2000 Census 3,118	County: 491,675
1990 Census 2,640	County: 253,100

INCENTIVES

Tax Abatement:	Yes
Enterprise Zone:	Yes
Industrial Foundation:	No
Foreign Trade Zone:	No
Reinvestment Zone:	Yes
Freeport Exemption:	Yes

TRANSPORTATION

AIR SERVICE

Nearest Airport:	McKinney
Runway Length:	7,000 ft
Runway Surface:	Asphalt
Lighted:	Yes
Fuel:	Yes
Instrum. Landing Sys.:	Yes
Airport Within 1 Hr.	
International	DFW International
Regional	Dallas Love Field
Municipal	McKinney

FREIGHT CARRIERS

All major truck lines

RAIL SERVICE

Provider: Kansas City Southern

HIGHWAYS

Located at intersection of State Hwy 380 and 78

TAXATION

TAX RATE (PER \$100 ASSESSED VALUE)

Collin County	\$0.240000
Farmersville, City	\$0.610073
Farmersville ISD	\$1.310000
Collin College	\$0.086300
TOTAL:	\$2.246373

Municipal Sales Tax:	1%
State Sales Tax:	6.25%
Econ. Dev. Sales Tax:	.5%
Other Sales Tax:	.5%



Farmersville

Community Profile

CITY GOVERNMENT

Type A General Law City Manager/Council
Number on Council: 6
Municipal Police: 7
Paid Firemen: Part-time Fire Chief
Volunteers: 35
City Zoning Body: yes
Master Plan: yes

EDUCATION

FARMERSVILLE ISD

Public School Budget: (2008-09) \$12,870,829

	<u>Schools</u>	<u>Enrollment</u>
Elementary:	1	231
Intermediate:	1	440
Middle/Jr. High:	1	355
High School:	1	430

AREA UNIVERSITIES/COLLEGES:

Collin College located in McKinney;
Future Farmersville Campus

Texas A & M University, Commerce
University of Texas – Dallas, Richardson
State Industrial Job Training: Yes
Vocational Program: Yes

COMMUNITY INFORMATION

HEALTH CARE

Total Nursing Home Facilities 1
Total Doctors (Medical) in City: 3
Total Dentist in City 2

MEDIA

Papers: 1-weekly
Radio Stations 1
TV Stations/TV Cable: Local/Yes

CHURCHES – 11 within the City

Protestant – 8

UTILITIES

ELECTRIC POWER: City of Farmersville
Transmission Voltage: 138 KV
Service Voltage: 120/208 120/240
240/480 277/480

NATURAL GAS: TXU Gas
BTU Content per Cu. Ft. 1,020

TELEPHONE SERVICE: SBC
Digital: Yes
Analog: Yes
Electromechanical: No
Make and Model: Ericsson 713
Fiber Optics: Yes
Switched 56 KBPS: Yes
High Capacity Digital (T-1): Yes
Digital Data Service: Yes
911: Yes
Other Network Services: Several

WATER SUPPLIER: City of Farmersville
Source: North Texas Municipal
Water District

Max. System Capacity daily: 4,000,000 gallons
Max. Daily Use to Date: 1,700,000 gallons
Pressure on Mains: 40-80 PSI
Storage Capacity 1,300,000 gallons
Size of Mains: ¾" – 10"
System Looped: yes

SEWER SYSTEM:

Type Treatment Plant: Activated Sludge
& Trickling Filter
Maximum Capacity: 755,000 gallons
Max. Daily use to date: 576,000 gallons
Project under const: currently addressing
future growth needs



Community Profile

Top Employers in Farmersville			
			# Employees
Farmersville ISD	Education	www.farmersvilleisd.net	197
Advanced Fixtures	Commercial Cabinetry	www.advancedfixtures.com	100
Brookshire's Grocery	Grocer	www.brookshires.com	82
First National Bank of Trenton (5 branches)	Banking	www.fnbtrenton.com	69
Hinton Home	Nursing Home		55
Duraedge/The JD Russell Company	Metal Landscape Edging	www.jdrussellco.com	45
First Bank Farmersville (3 branches)	Banking	www.firstbankfarmersville.com	42
American Acrylic & Injection	Bathtub & Whirlpool Systems	www.whirlpoolsystems.com	35
Dairy Queen	Restaurant	www.dairyqueen.com	35
Feagin's Supermarket	Grocer		30
Sonic Drive Inn	Restaurant	www.sonicdriveinn.com	28
City of Farmersville	City Government	www.farmersvilletx.com	26
Farmersville Times - C & S Media	Newspaper	www.farmersvilletime.com	26
Wylie Drilling & Drainage	Drilling	www.wyliedrilling.com	26
Cello-Wrap Printing Co.	Cellophane wrapper printing	www.cello-wrap.com	22
Tedford Chevrolet	Auto Dealership	www.tedfordchevrolet.com	15
Dyer Drug	Drugstore & merchandise		13
Farmersville Family Medical Center	Medical Services	www.tachc.org	11



Community Profile

AREA ATTRACTIONS

Annual Audie Murphy Day Celebration- June
Annual Old Time Saturday- October
First Saturday of the Month Farmers & Fleas Market
Bain-Honaker Historic House Museum
Annual Bug Tussle Classic Car Trek-August
Splash Park for children (open Memorial Day through Labor Day)
Riding Arena
Lake Lavon
11 Historical Markers in City
Historic Downtown with Shopping and Dining
Heard Museum – McKinney
Collin County Youth Park- McKinney
Chestnut Square Historical Museum – McKinney
Audie Murphy Cotton Museum - Greenville

RECREATION

Civic Center	1
Senior Center	1
Parks	4
Area Lakes	3
Exercise Facilities	2
Hike & bike trail	1
Tennis Courts	1
Bed & Breakfast Facilities	0
Libraries	1
Gamerooms	3

CLIMATE

Annual Average Temperature:	85° F
Mo. Average High Temperature:	96° F
Mo Average Low Temperature:	33° F
Annual Average Precipitation:	40"
Annual Average Snowfall:	2.7"
Elevation:	670'

FINANCE

First Bank Farmersville

NEARBY SMALL CITIES

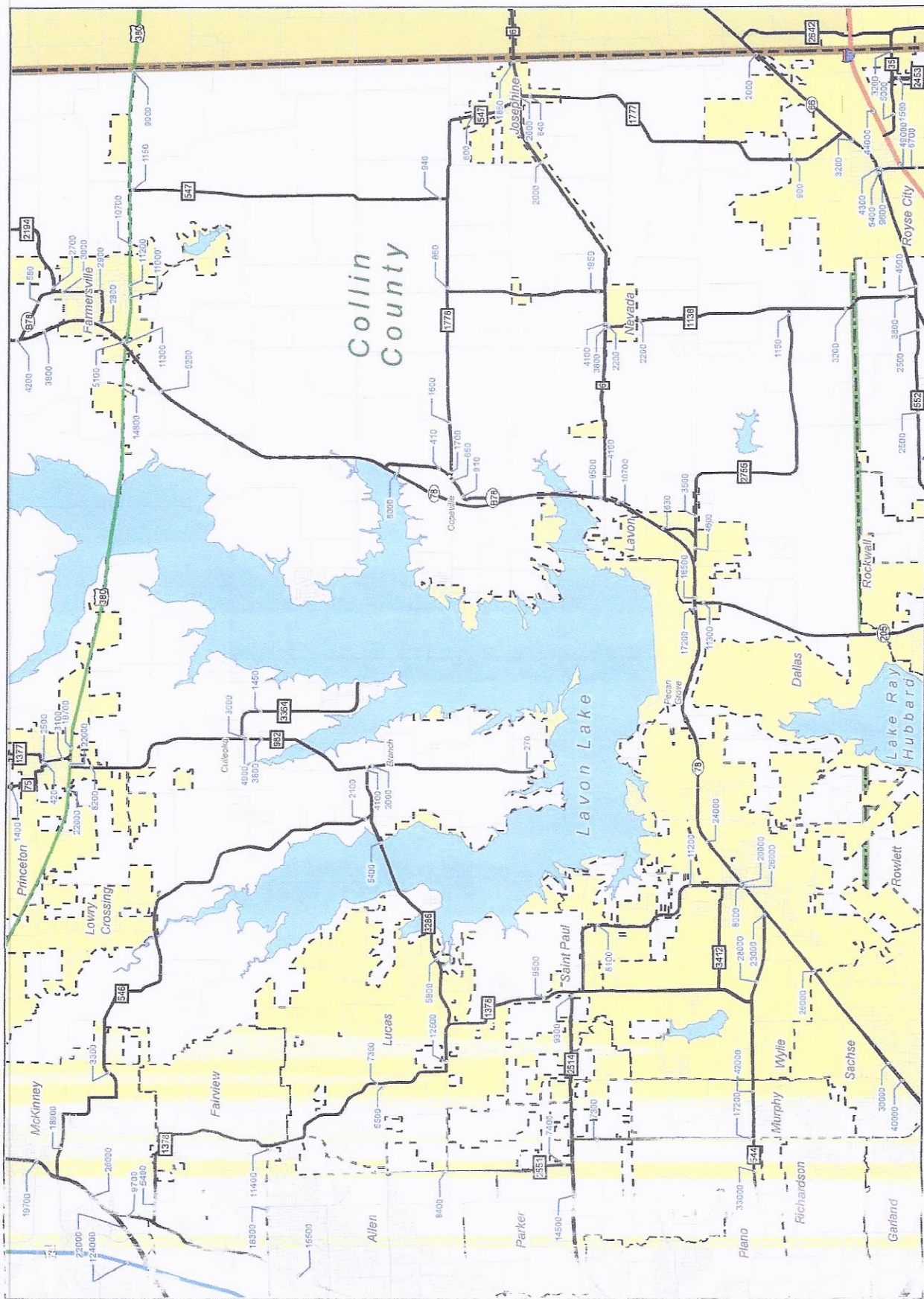
Josephine 7.7 Miles
Princeton 8.1 Miles
Nevada 8.4 Miles
Blue Ridge 9.6 Miles
Caddo Mills 10.2 Miles
Lavon 10.3 Miles
Lowry Crossing 10.9 Miles
New Hope 12.3 Miles
Royse City 13.1 Miles
Celeste 13.2 Miles
Melissa 14.7 Miles
Fairview 16 Miles

NEAREST BIG CITIES (Population 100,000 +)

Greenville 14.5 Miles
McKinney 15.0 Miles
Wylie 18.7 Miles
Plano 22.0 Miles
Garland 23.7 Miles
Mesquite 30.7 Miles
Carrollton 34.0 Miles
Dallas 36.7 Miles
Irving 41.9 Miles
Grand Prairie 46.9 Miles
Arlington 52.5 Miles
Ft Worth 63.5 Miles
Waco 120.7 Miles

Total Population within
15-mile radius:

186,677



2011 DALLAS DISTRICT TRAFFIC MAP

REPAIRED BY THE
Texas Department of Transportation
Transportation Planning and Programming Division
INTEGRATED WITH
U.S. Department of Transportation

LEGEND

Interstate	State Route	County Road	Local Road
Major Arterial	Minor Arterial	Collector	Local

Scale

0 1 2 Miles

North Arrow

Inset Map

Index Map

Sheet 6 of 16 Basic Sheets

Farmersville, Texas

Every good reason to live, work, play and enjoy life in Farmersville.



As with any hidden treasure, we are big enough to provide the perfect lifestyle by being small enough to meet your needs.

Located at the intersection of U.S. Highway 380 and State Highway 78, Farmersville rests in eastern Collin County. As homesteaders began to settle in this area in the 1800's, they quickly discovered the rich, fertile, black land. -The first cotton seed was planted in a nine acre plot in 1870 by Howard Crawford. That crop was so successful that Mr. Crawford shared his cottonseed with neighbors. As a result of his sharing, Farmersville had become the center of the cotton producing area in 1900. In that year, 12,000 bales of cotton were sold from the wagons on the square. By 1910 there were six cotton gins operating in Farmersville.

Around 1857, citizens began the process of naming their settlement, and chose the name Farmersville as suggested by Johnny Hendrex, since that was the occupation of most people in the area. After many years, even though cotton was king, Mr. A.A. Reagan planted 13 acres of onions in 1925. He harvested a good crop, and "East Collin Sweets" soon took over the economy of the town. One thousand carloads of onions were shipped annually. The railroad built eight onion sheds in Farmersville, for storing and distribution of huge onion crops. In 1935, the first "Onion Festival" was held and the Governor of Texas, James W. Allred, was the speaker on the downtown square. Thirty thousand people attended the two-day event.

The weekly local newspaper, *The Farmersville Times*, was founded in 1885 and is the oldest newspaper in Collin County. Today it continues to provide news through both digital and hard copies.

First National Bank, now Independent Bank, was established in 1885. First Bank of Trenton joined the banking community after the year 2000, providing two financial institutions locally.

Growing steadily as a part of a rapidly expanding Collin County, Farmersville is a charter member city of the North Texas Municipal Water District and owner of its own electrical system. As of 2010, the population was numbered at 3301. The school district educates over 1400 students on four campuses.

During the month of June, near his birthday, Farmersville honors Audie Murphy, as well as area veterans on "Audie Murphy Day." When he enlisted in the U.S. Army, Audie used his sister's Farmersville address as his own. He later became the most decorated soldier of World War II. Upon returning from military service in 1945, Audie Murphy walked the streets of Farmersville with *Life* magazine reporters, unveiling this Texas Treasure; Farmersville.

Farmersville, Texas
Home of

Audie Murphy

The son of poor
Texas
sharecroppers, and
rose to national
fame as the most
decorated U.S.
combat soldier of
World War II.



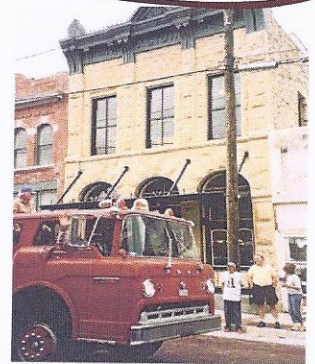


Opportunity for Growth

Farmersville is a growing treasure. Our steady economy, family-friendly neighborhoods, low crime rates, growing diversity, educational offerings with Collin County Community College expanding here on 76 acres, and plans already in place to build more schools on 50+ acres give us the edge with that still small hometown feel.

Median real estate prices are below the national average for industrial or small business spaces, and homes are available in all types and sizes. Rental properties are affordable, and you won't have a long commute in heavy traffic to reach major destinations for work or pleasure. We are committed to assist new or start-up businesses to operate and grow their businesses successfully through local resources and education seminars.

More than anything, the people of Farmersville are committed to the values of trust, honesty, and helpfulness, making it easy to settle in, to get acquainted, and to become an active and valued member of this community.



Business Environment

Attractive Business Climate

Collin County is one of the USA's wealthiest counties. It is the third fastest growing county in Texas and the thirteenth fastest growing county in the country.

Overall, the Texas economy continues to grow at nearly three times the national average. CNBC recently named Texas America's Top State for Business and overall best economy. Texas was also recently recognized by CEO magazine as the Best State to do Business for the third year in a row, and is now home to more fortune 500 companies than any other state in the nation. Last year, more than half of all new jobs created in the United States were created in Texas. (Sources From Gov. Rick Perry)

Right To Work State

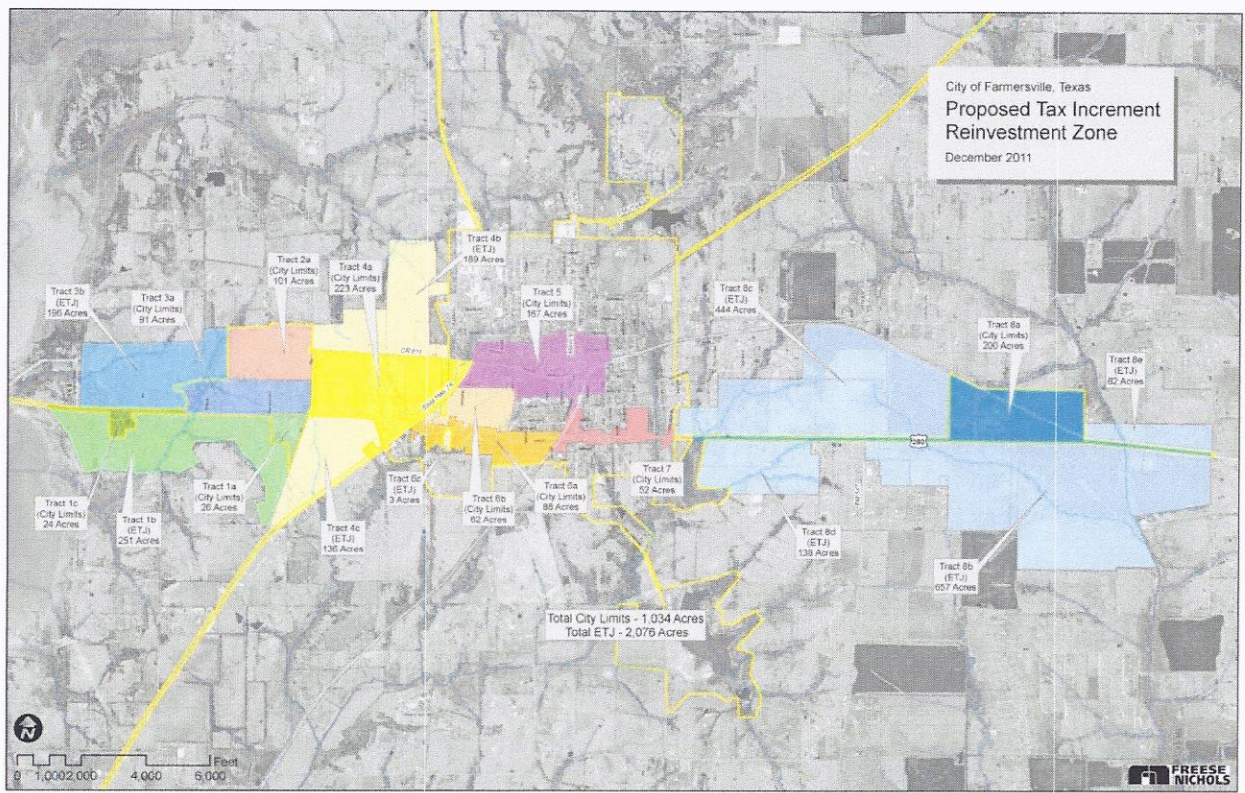
Texas laws protect employees from threats, force, intimidation, or coercion for choosing to either participate or not participate in a union. In other words, the choice of whether to join a labor union is yours; you may not be required to join or pay dues to a union as a condition of employment, nor may you be denied employment because you have joined a union.

Access

A prime location for growth with easy access to other major interstates, state highways and major cities.

Business Assistance Programs

- 1) Tax Increment Reinvestment Zone (TIRZ)
 - Increases and incentivizes investment in the City via infrastructure projects: streets, storm water, water, sanitary sewer, etc.
 - Tax increases on real property tax value in the TIRZ zone after 2011 are allocated to the City via the TIRZ fund
City split 100/0 (TIRZ/City, rate 0.6975/\$100)
County split 50/50 (TIRZ/County, rate 0.2400/\$100)
 - Projects are approved by the TIRZ Board on a case-by-case basis as funds are available
 - Largest by land area in Collin County
 - Call the TIRZ Board Chairman today to discuss your needs.
TIRZ Board Chairman: Mayor Joe Helmberger (214-546-3707)



- 2) Economic Development Corporation (EDC/4A)
 - Provides economic assistance via board approved projects
 - The number one goal of the EDC is to "create a business atmosphere that supports retention and expansion of existing businesses"
 - The EDC provides assistance with:
 - Public utilities
 - Franchise utilities
 - Streets
 - Rail service
 - Land acquisition
 - EDC revenue is generated from a 0.5 cent sales tax
 - Projects are approved by the EDC Board on a case-by-case basis as funds are available
 - Call the EDC Board to discuss your needs at (972) 782-6151.

3) City of Farmersville

Ad Valorem Tax Abatement: For an increase in the value of annual payroll, business personal property **and/or** real property (land/building) a tax abatement is available contingent upon meeting program criteria and City Council approval

Total Annual Increase	Years of Abatement	Percentage of Abatement
\$5,000,001 - \$20,000,000	5	50
\$2,000,001 - \$5,000,000	4	50
\$500,000 - \$2,000,000	4	50

Note: Real property inclusion TIRZ dependent

- Permit fees may be waived for significant increases in real property contingent upon City Council approval

4) Collin County

- Tax abatement program
- Available upon meeting qualifications and Commissioner's Court approval for increases in value of property
- Abatement agreement required
- Value and Term
 1. Matches sponsoring municipality's agreement to maximum of 50%
 2. Variable, 10 years maximum
 3. Greater than 50% agreements possible for extraordinary economic impact to the County

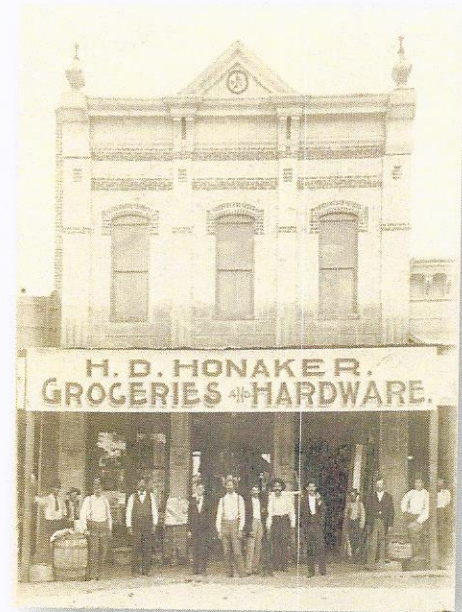
Taxes

Ad Valorem

City of Farmersville: 0.6975/\$100
 Farmersville Independent School District: 1.3400/\$100
 Collin County: 0.2400/\$100
 Collin College: 0.0863/\$100
 Total Ad Valorem Rate: 2.3638/\$100

Sales Tax Rates

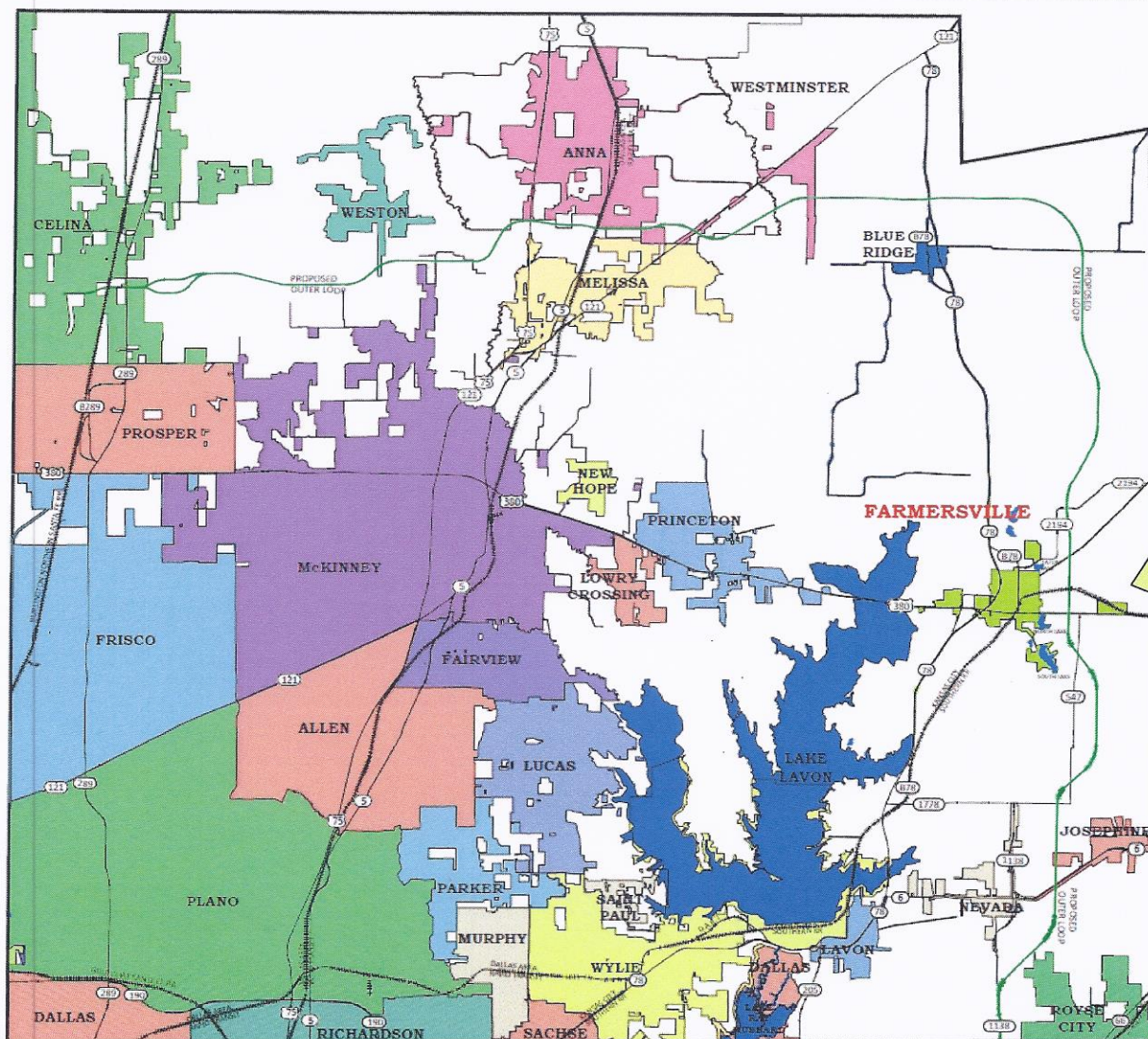
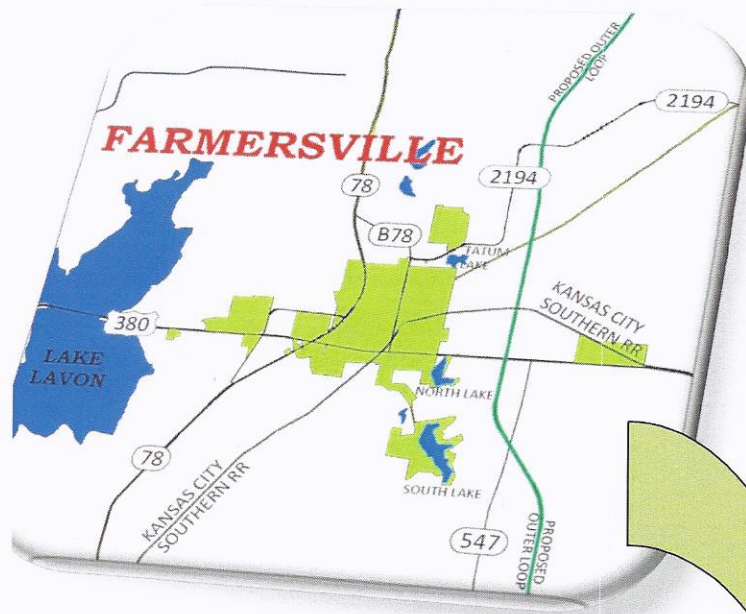
City of Farmersville: 0.0100
 Economic Development Corporation (EDC/4A): 0.0050
 Community Development Corporation (CDC/4B): 0.0050
 State Sales Tax: 0.0625
 Total Sales Tax Rate: 0.0825



Location-Location-Location

Farmersville Texas is located in Collin County; Northeast of Dallas centered on the four corners of US 380 and State Highway 78. Farmersville is quickly becoming more than the onion capital of the world and home of Audie Murphy. Farmersville is the perfect retreat from the fast paced cities. This is where residents and business owners come to benefit from hometown life with the closeness and easy access to the Dallas – Fort Worth metroplex.

45 Miles To Dallas, Texas	278 Miles to Houston, Texas
76 Miles to Fort Worth, Texas	213 Miles to Oklahoma City, Oklahoma
318 Miles To San Antonio, Texas	229 Miles to Tulsa, Oklahoma
239 Miles to Austin, Texas	



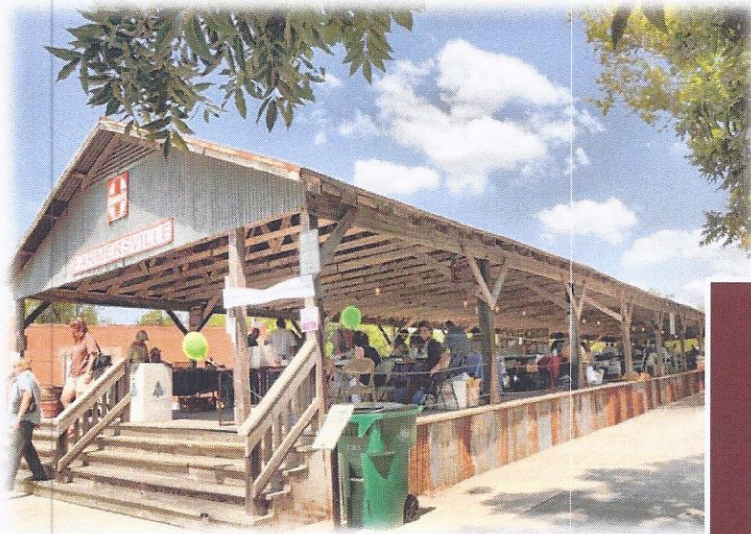
Highway Access

- ♦ State Highway 78 / State Highway 121 Intersection (16 miles north)
- ♦ U.S. 380 / I-30 Intersection (17 Miles to the East)
- ♦ State Highway 78 / George Bush Tollway Intersection (24 miles south)
- ♦ U.S. 380 / Hwy. 75 Intersection (16 miles west)
- ♦ Planned improvements:
 - State Highway 78 lane expansion, Wylie to State Highway 6
 - Collin County Beltway project

Traffic count completed in 2009 shows 5,200 vehicles travel SH78 north of US 380 and 10,000 vehicles travel US 380 past SH 78 toward Greenville in a 24 hour period.

Intermodal Hub Development

Farmersville is the area best suited for the establishment of an intermodal hub facility normally located with excellent access to rail, major roadway facilities, and available land. The North East Texas Rural Rail Transportation District and the North Central Texas Council of Governments established the intermodal facility proposed site at the intersection of the regional outer loop and the KCS rail line.



DEMOGRAPHIC SNAPSHOT

- Population 3,301
- 1,291 Households
- 62% Owner-occupied; 37% renter
- Median age: 35.6 (40.8TX) years
- Median household income: \$41,869 (\$48,259TX)
- Median gross rent \$693
- Median house value \$103,642 (\$125,800TX)
- Population growth
 - 1970 – 2311
 - 1990 – 2640
 - 2000 – 3118
 - 2010 – 3301

Farmersville Independent School District

TEA Recognized School District

Proud to be a recognized district, two exemplary campuses - Tatum and Intermediate School, along with two recognized campuses - High School and Junior High School.

2007 Class 2A State Football Champions

1450 Enrollment (All Grade Levels) (Grades 9-12 have 439 students)

Website: www.farmersvilleisd.net

Farmersville ISD has purchased 52 acres south of Farmersville and has annexed this property into the city limits.

Farmersville ISD is one of the Top Employers with 199 staff members.

The long term vision for Farmersville Schools allows for expansion and growth for years to come.

High School Campus currently sits on 18 acres with 8 additional acres off of Wilcoxson

Junior High Campus sits on 35 acres

Intermediate School Campus sits on 7 acres

Tatum Elementary sits on 3 acres

Graduate & Continuing Education Opportunities: College-Universities & Junior Colleges

Collin College (16 Miles)

Collin Higher Education Center in McKinney is the county's first university center offering junior and senior level undergraduate classes as well as masters and doctoral programs. Offers associate of arts, science and applied science degrees, associate of arts in teaching, certificates and marketable skills achievement awards. Serves about 53,000 credit and continuing education students annually. Accredited by the Commission on Colleges of the Southern Association of Colleges and Schools to award associate degrees and certificates.

Collin College will begin construction of a new campus on 75 acres on U.S. 380 in Farmersville very soon.

University of Texas at Dallas – Richardson, Texas Campus (33 Miles)

A teaching and research institution with enrollment of about 19,000. Offers degrees from bachelor through doctoral.

Texas A & M, Commerce, Texas (42 Miles)

A four year university offering more than one hundred courses of study from twenty six academic departments.

Austin College – Sherman, Texas (48 Miles)

Austin College is a private, coeducational, liberal arts institution affiliated with the Presbyterian Church. Over 85-acre campus offering professional and cultural opportunities to students and alumni.

North Texas State University – Denton, Texas (46 Miles)

As one of the nation's largest public universities and the most comprehensive in the DFW area, they are dedicated to providing an excellent educational experience to 36,000 students. UNT is a student-focused public research university with 12 colleges and schools offering 97 bachelors 83 masters and 35 doctoral degree programs, many nationally and internationally recognized.

Southern Methodist University – Dallas, Texas (46 Miles)

A nationally ranked private university with seven degree-granting schools, SMU is a distinguished center for teaching and research located in the heart of Dallas, SMU's 11,000 students benefit from small classes, leadership opportunities, international study and innovative programs. SMU is celebrating the centennial of its founding in 1911 and in this second century the University continues to rise in national prominence.

Southeastern Oklahoma State University – Durant, Oklahoma (79 Miles)

A medium sized four year public liberal arts college and teachers college. This coed college is located in a rural setting offering bachelors and master's degrees.

Health Care

Health & Medical Clinics

Farmersville Family Medical Center
Gamboa-Parsley Family Clinic
Chiropractic Plus
Chiropractor Dr. Charles Keith

Dentist

Farmersville Dental Group

Pharmacy

Brookshire's Pharmacy
Dyer Drug Store (In Business Since 1915)

Assisted Living & Nursing Care

Hinton Home, Inc. – Farmersville, Texas
Family Owned – Operated Since 1963
17 Senior Independent Living Apartments
74 Bed Nursing & Rehabilitation Facility

Hospitals & Medical Centers

Hunt Regional Health Care Center - Greenville, Texas (15 Miles)
Medical Center of McKinney, - McKinney, Texas (16 Miles)
Baylor Medical Center - McKinney, Texas (18 Miles)
Texas Health Presbyterian Hospital – Allen, Texas (33 Miles)
Texas Health Presbyterian Hospital – Sherman, Texas (48 Miles)

Urgent Care Centers

Hunt Regional Quick Care – Greenville, Texas (15 Miles)
CareNow Urgent Care – McKinney, Texas (17 Miles)
Acute Care for Kids - McKinney, Texas (17 Miles)
Lake Point Urgent Care – Rockwall, Texas (19 Miles)



Security & Safety Information

Farmersville Police Department

Chief (1); Sergeants (2); Officers (6); Vehicles (6)
Civilian Personnel: Public Safety Secretary (1); Public Service Officer (1)
Reserve Officers (4)

Farmersville Fire-Rescue Department

Full Time Chief – 24 Volunteers (4 Paramedics – 11 EMT's)
Ladder Truck - Quint (1) with 77' Ladder
Engines (2) (the second to be delivered in October 2012)
3,000 (1) Gallon Tanker/Pumper
Brush Trucks (2); Rescue Truck - Command Car – SUV (1 Each)
Ambulance Housed in Fire House
24/7 Manned Operation with Back-Up Ambulance throughout the County

Air & Rail Transportation Information

Airports

Collin County Regional Airport in McKinney, Texas is a major aviation connection. (16 Miles)
Equipped with a new 7,002 foot runway serving corporate and private aircraft, the Regional's Airport mission is to develop the premier general aviation airport in this area with future commercial service goals. Tax incentives available for hanger pad sites and service for corporate aircraft.

Majors Field Airport – Greenville, Texas (17 Miles)
Dallas Love Field Airport – Dallas, Texas (53 Miles)
DFW Airport – Dallas, Texas (56 Miles)
DFW is the eighth busiest airport in the world.

Rail

The Kansas City Southern Rail Line travels through the heart of the community near the downtown district. *A significant portion of the rail line skirts the TIRZ boundary.*

Highway Access

State Highway 78 / State Highway 121 Intersection (To the North) – Desert, Texas (Approx. 16 Miles)

Hwy. 380 / I-30 Intersections (To the East) – Greenville, Texas (Approx. 17 Miles)

State Highway 78 / George Bush Tollway Intersection (To the South) – Garland, Texas (Approx. 55 Miles)

Hwy. 380 / Hwy. 75 Intersection (To the West) – McKinney, Texas (Approx. 16 Miles)

Quality of Life / Lifestyle

Churches & Religious Organizations

Bethlehem Baptist Church

Trinity Baptist Church

Church of Christ

Grace Fellowship

Gallaway Memorial Church

New Life Baptist Church

Step of Faith

Farmersville First Baptist Church

First United Methodist Church

Merit Baptist Church

Mt. Calvary Baptist Church

Church of Jesus Christ of Latter Day Saints

Kalachakra Buddhist Meditation Temple

Snow Hill Baptist Church

The Farmersville Times

Began Publication in March 1885 – The oldest newspaper in Collin County located in the historic Masonic Lodge Building in Farmersville with a weekly edition.

Main Street City Designation

Farmersville has been in the Main Street Program since the year 2000, and has realized over \$10 million in downtown reinvestment, and a net gain of 144 new jobs. Sixty five buildings, many historic, comprise the Main Street District. The city has been awarded National Main Street designation each year it has been in the Main Street Program.



City Improvement & Projects

Chaparral Trail

JW Spain Athletic Complex

City Park

Onion Shed

Rambler Park / Water Splash Park

Southlake Park

Rodeo Arena

Audie Murphy Collection at Rike Memorial Library

Honors First Lieutenant Audie Murphy, Farmersville's hometown hero, and the most decorated hero in American History. His celebrated return from WWII was featured on the cover of *Life Magazine* in 1945.

Parks & Recreational Facilities

Downtown Main Street Program

Downtown Gazebo

Farmersville Heritage Museum

(Currently in planning stages)

Clubs & Organizations

Senior Citizens Center / Meals On Wheels
Rike Memorial Public Library (Recently Renovated & Updated)
Farmersville Rotary Club
Boy Scouts of America
VFW Post 7246

Farmersville FFA
Farmersville Garden Club
100F Lodge #228
Masonic Lodge #214

Farmersville Events

Farmersville Fleas & Market (Monthly Event)
Old Time Saturday (October)
Audie Murphy Day (June)
July 4th (Annually)

Farmersville Chamber of Commerce

The Chamber strives to enhance the quality of life and image of the community through the promotion of existing businesses, attraction of new businesses and by encouraging beatification efforts by all citizens.

Paid Administrator / Active (local) Board of Directors (7)

98 Chamber Members Strong

Annual Dues \$100.00

Annual Business Directory & Visitors Guide

Actively promoting Historic Texas ... Farmersville's Businesses, Downtown & Members

Future Events: Skeet Shoot; Industrial & Business Expo; Health Fair

Annual Events Include:

Annual Chamber of Commerce Banquet

Yards of Yard Sales (June)

BugTussle Car Tour (August)

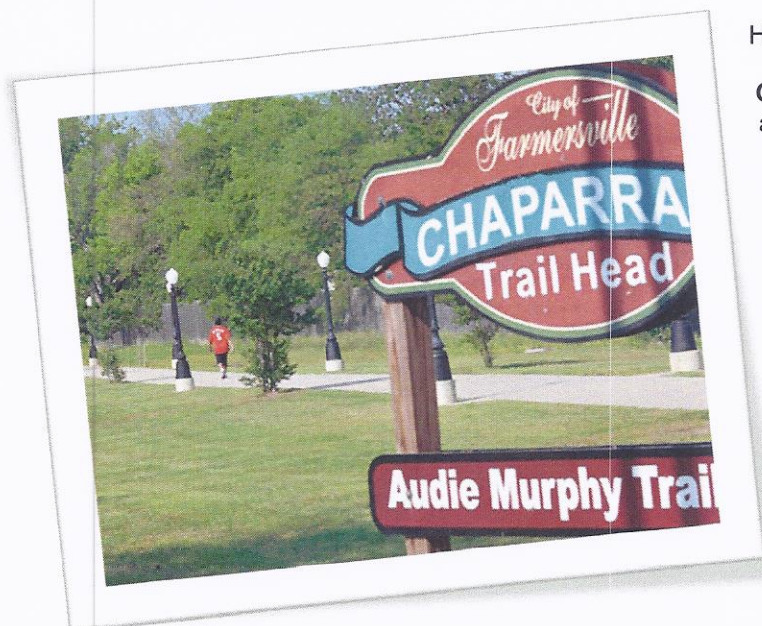
Trick It Up Bike Ride and Scare On The Square (October)

Christmas Parade (December)

Average Temperatures

Jan 33.1	Feb 49.4	Mar 57.4	Apr 65.0	May 73.1	June 80.9
July 85.0	Aug 84.4	Sept 77.5	Oct 67.2	Nov – 55.1	Dec 46.7

Tourism & Cultural Venues



Hiking & Bike Trails

Chaparral Trail – The Chaparral Trail begins in Farmersville at the Audie Murphy Trailhead at the historic Onion Shed in City Park and traverses northeast Texas all the way to New Boston. The section owned by Farmersville runs from the trailhead to the Collin/Hunt County line (a distance of 5.2 miles). The city has paved the trail a distance of 2.5 miles with plans underway to pave the remaining 2.7 miles. The entire 130 mile length is in varying stages of development with major cities along the trail having great stretches paved to similar standards as Farmerville's. The trail is designed for both on and off road cyclists, walkers, runners, hikers, horseback riders, bird watchers, families, tourists and nature lovers. THE FIFTH LONGEST TRAIL IN THE U.S. is taking shape between Farmersville and New Boston, Texas. The 6,500,000 people that call the metroplex home will access the trail at the Audie Murphy Trailhead in historic, downtown Farmersville.

Historic Tours & Information

There are numerous historical markers and places to visit in Farmersville including the restored 1865 Bain-Honaker House.

Lakes & Recreation

- ✓ Lavon Lake: the north end of this 21,400 acre lake is less than 5 miles from downtown. Lake Lavon supplies water to the member cities of the North Texas Municipal Water District, provides flood control to the Collin, Dallas and Rockwall County areas, and offers some of the best fishing, camping and boating in Texas.
- ✓ Lake Ray Hubbard covers land in Collin, Dallas, Rockwall and Kaufman counties, one mile west of Rockwall on the East fork of the Trinity River with a surface area of 21,671 acres. (19 Miles)
- ✓ Cooper Lake & State Park offers camping, fishing, water skiing, picnicking, boating, swimming, hiking, bird watching, nature study, fun and educational nature programs and tours. Cooper, Texas (45 Miles)
- ✓ Lake Texoma is a large reservoir at the confluence of the Red and Washita Rivers. It covers an area of 89,000 acres or 139.06 square miles. Approximately 6 million visitors per year enjoy Lake Texoma. This large lake has lots to offer tourists with two federally managed wildlife-refuge areas, 47 recreational areas managed by the U.S. Army Corps of Engineers, two state parks -- one in Oklahoma and one in Texas -- as well as 80,000 acres of open public land used for hunting. Denison, Texas. (45 Miles)

Housing & Utility Information

Apartments & Housing

Shady Oaks Apartments
Crossroads Terrace Apartments
Feagin Apartments
Hilltop Apartments
Low Income Housing Apartments

Communications & Utilities

City of Farmersville: Water, sewer, electric and trash collection. The City is one of a very few in the country that owns their municipal electric utility.

Trash: IESI through the City with recycling centers and pick up. Award Winning Recycle Program

Gas: ATMOS Energy

Communication: Time Warner Business Class Internet Telephone Services / AT&T Telephone Internet & Cable Services / Skybeam Wireless Broadband Services / DISH Network

Farmersville Industries

Advanced Fixtures, Inc.

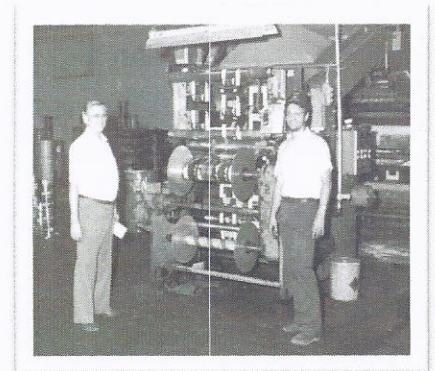
Advanced Fixtures, Inc. has been an industry leader in manufacturing retail store fixture and millwork packages for over 25 years. Founded in 1983, growing to a company over 100 employees strong, with over 140,000 square feet of production capability – focused on re-defining what a fixture manufacturer should be.

American Acrylic & Injection

Founded in 1978 as a mold-maker and supplier to the marble industry. One of the largest suppliers of acrylic bathtubs in the United States operating in a 100,000 square foot building in Farmersville, Texas.

Cello-Wrap (Approx 25 Employees)

As a full-service flexographic printing company-- image development, laser plate making, printing, slitting, and inventory storage and management. Founded in 1953. (See Photo)



Champion Container Company (*Approx 30-35 Employees*)

Established in 2003, Champion Container Company was founded by Ryan and Jima Rudicile in Farmersville, Texas and has grown into one of the fastest growing corrugated and foam manufactures in the North Texas region.

Gerdau (*Approx 30 Employees*)

Gerdau (a 110 year old company) is the leading company in the production of long steel in the Americas and one of the major suppliers of specialty long steel in the world. With more than 45,000 employees, Gerdau has an installed capacity of more than 25 million metric tons of steel and it is the largest recycler in Latin America and around the world, it transforms millions of metric tons of scrap into steel every year. Offering a diverse and balanced product mix of merchant steel, rebar, structural shapes, fabricated steel, flat rolled steel and wire rod.

J.D. Russell Company (*Approx 60 Employees*)

Manufacturers and distributors of quality construction materials and landscape edging products. Compared to wood and plastic edging, steel is versatile, functional, practical and economical and easy to install. Duraedge can provide custom fabrication needs.

Ride Right (*Approx 6 Employees*)

When you wear a Ride Right vest, you're protected by an unwavering 20-year legacy for quality, style and durability. For nearly two decades, these protective vests and gear have kept thousands of cowboys and cowgirls at the top of their game. Their passion is for creating the highest quality protective gear in the rodeo industry.

Thermal Transfer Systems, Inc. (*Approx 4 Employees at Thermal Transfer and 5 at Exact Exchanger*)

Sales & Distribution company offering one of the most complete product available for Industrial Heat Exchangers and Exhaust Silencers. Exact Exchangers is a manufacturer of those products also in Farmersville.

Wylie Drilling and Drainage, Inc. (*Approx 22 Employees*)

Offering a variety of drilling options to customers. Drilling for new construction as well as existing structures with 2 limited access rigs available.

Access to Shopping, Sporting & Family Events

Farmersville – A Texas Treasure

Our treasurers include many historical markers, unique shops and diverse and delicious restaurants, and outdoor activities including hiking and bike trails, parks and beautiful lakes just a short drive away. If Farmersville is, as the cities motto so aptly states, "...a Texas Treasure", then Downtown is most certainly a jewel in its crown. Even more treasurers are found on the square with a quaint café, antique stores, gift and jewelry stores, a yarn and knitting shop, then just a little south of the square is an embroidery shop and one of the top businesses in the world called Ride Right making rodeo vests and gear. We also have the Kincade Gallery, the largest gallery in North Texas, with 13 rooms of hard to find Kincade canvases. Thomas Kincade (*Painter of Light*) paintings line the gallery walls—you will be amazed to find these treasures. *Photo by David Kozlowski*

The Heard Museum

Museum consists of a 289 acre wildlife sanctuary and a natural science museum. Bringing nature and people together to discover, enjoy, experience, restore, and preserve our priceless environment. McKinney, Texas (15 Miles)

The Village of Fairview & Allen

Mega shopping complex and Events Center housing the Allen American Hockey Team, also includes Top Golf, a dog park, theatres, dining, shopping & outdoor activities and entertainment. Fairview, Texas (26 Miles)

Sherman & Denison

Neighbors to the north, just south of the Oklahoma border, Sherman and Denison offer a multitude of shopping both small to large department stores, antiques and collectable shops, outdoor activities, indoor entertainment with the still small town feel bordering the beautiful and majestic Lake Texoma. Sherman, Texas (48 Miles)



The City of Farmersville

205 South Main Street
Farmersville, TX 75442

Telephone (972) 782-6151

Metro (972) 784-6093

Fax (972) 782-6604

Website: www.farmersvilletx.com

City Manager

Benjamin (Ben) L. White, P.E.

Email: b.white@ci.farmersville.tx.us

Mayor

Joseph E. Helmberger, P.E.

Telephone (214) 546-3707

Russell Chandler, Councilman (Place 1)

Michael Carr, Councilman (Place 2)

Billy Long, Councilman (Place 3)

Jim Foy, Mayor Pro Tem (Place 4)

Pansy Hundley, Councilwoman (Place 5)

Farmersville Chamber of Commerce

Lisa Eastman, Manager

201 South Main Street

Farmersville, TX 75442

Telephone (972) 782-6533

Email: l.eastman@ci.farmersville.tx.us

Printed October 2012