



# CENTURION CENTRE I & II

40,481 RSF | OFFICE | AVAILABLE FOR LEASE

FOUNDRY  
COMMERCIAL



# PROPERTY OVERVIEW

- Address** 10375 & 10407 Centurion PKWY N, Jacksonville, FL
- Available SF** Up to 40,481 RSF
- Building Size** 92,687 SF CCI 87,600 SF CCII

## PROPERTY FEATURES

- Shaded parking wraps buildings
- On-site amenities include food trucks and adjacent world-class Brooks YMCA
- Responsive on-site property management
- Outdoor seating with lush landscaping
- Great access to J. Turner Butler Blvd. / 9A / I-95
- Close proximity to St. Johns Town Center and The Avenues Mall
- Close proximity to daycare facility, Deerwood Academy

### Full Service Rental Rate: **\$23.75 RSF**

- Two-story atriums with contemporary lobby furnishings
- Floor to ceiling glass suites
- Frontage on J. Turner Butler Blvd.
- Efficient floor plans

### CENTURION CENTRE I

- 92,687 total SF
- Built in 1996

#### AVAILABLE SUITES:

- Ste. 110: 6,793 RSF (divisible)
- Ste. 200: 23,082 RSF (divisible)
- Ste. 320: 2,188 RSF

### CENTURION CENTRE II

- 87,600 total SF
- Built in 1993

#### AVAILABLE SUITES:

- Ste. 100: 5,975 RSF (divisible)
- Ste. 205: 2,443 RSF

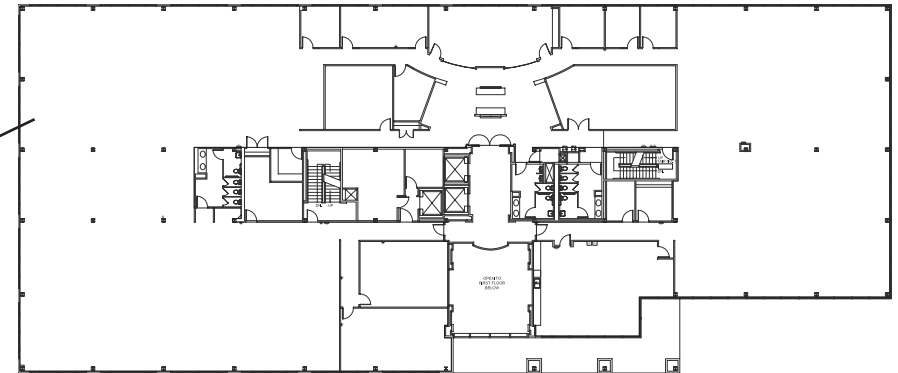
# CENTURION CENTRE I

10375 CENTURION PKWY N, JACKSONVILLE, FL 32256

## AVAILABILITY

Floor/Suite	SF Available
Suite 110	6,793 RSF (divisible)
Suite 200	23,082 RSF (divisible)
Suite 320	2,188 RSF

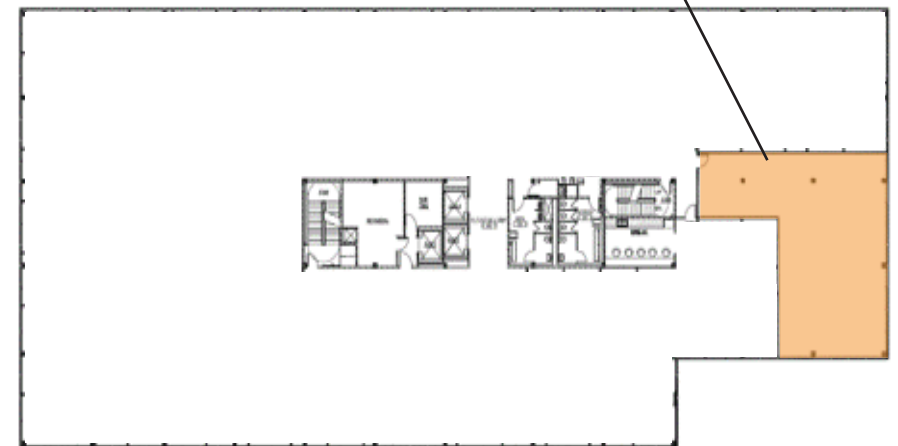
## 2ND FLOOR PLAN



**SUITE 200**  
23,082 RSF  
(divisible)

**SUITE 110**  
6,793 RSF  
(divisible)

## 3RD FLOOR PLAN



**SUITE 320**  
2,188 RSF

## 1ST FLOOR PLAN



For more information, please contact:

### BRAD R. CHRISCHILLES

Principal  
904.345.2020  
Brad.Chrischilles@foundrycommercial.com  
Licensed Real Estate Brokers

### ANDREW G. HAWKINS

Senior Vice President  
904.345.2022  
Andrew.Hawkins@foundrycommercial.com  
Licensed Real Estate Brokers

Although the information contained herein was provided by sources believed to be reliable, Foundry Commercial makes no representation, expressed or implied, as to its accuracy and said information is subject to errors, omissions or changes.

**FOUNDRY**  
COMMERCIAL

6440 Southpoint Pkwy.  
Suite 100  
Jacksonville, FL 32216

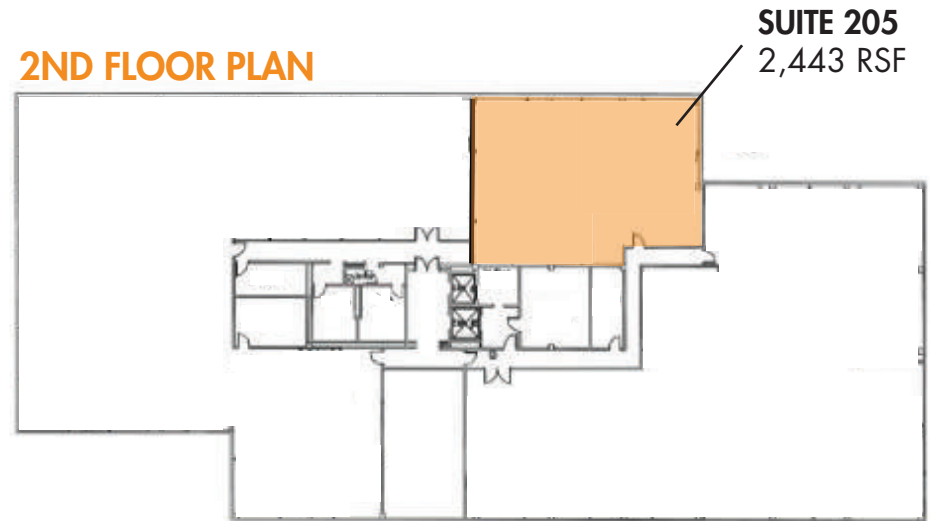
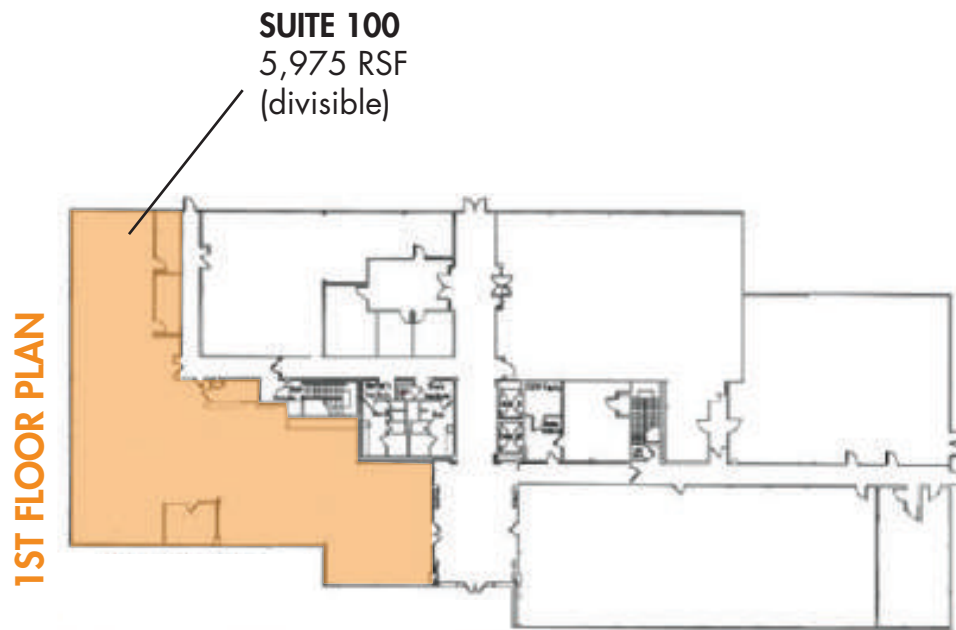
[foundrycommercial.com](http://foundrycommercial.com)

# CENTURION CENTRE II

CENTURION PKWY N, JACKSONVILLE, FL 32256

## AVAILABILITY

Floor/Suite	SF Available
Suite 100	5,975 RSF (divisible)
Suite 205	2,443 RSF



For more information, please contact:

**BRAD R. CHRISCHILLES**

Principal  
904.345.2020  
Brad.Chrischilles@foundrycommercial.com  
Licensed Real Estate Brokers

**ANDREW G. HAWKINS**

Senior Vice President  
904.345.2022  
Andrew.Hawkins@foundrycommercial.com  
Licensed Real Estate Brokers

Although the information contained herein was provided by sources believed to be reliable, Foundry Commercial makes no representation, expressed or implied, as to its accuracy and said information is subject to errors, omissions or changes.

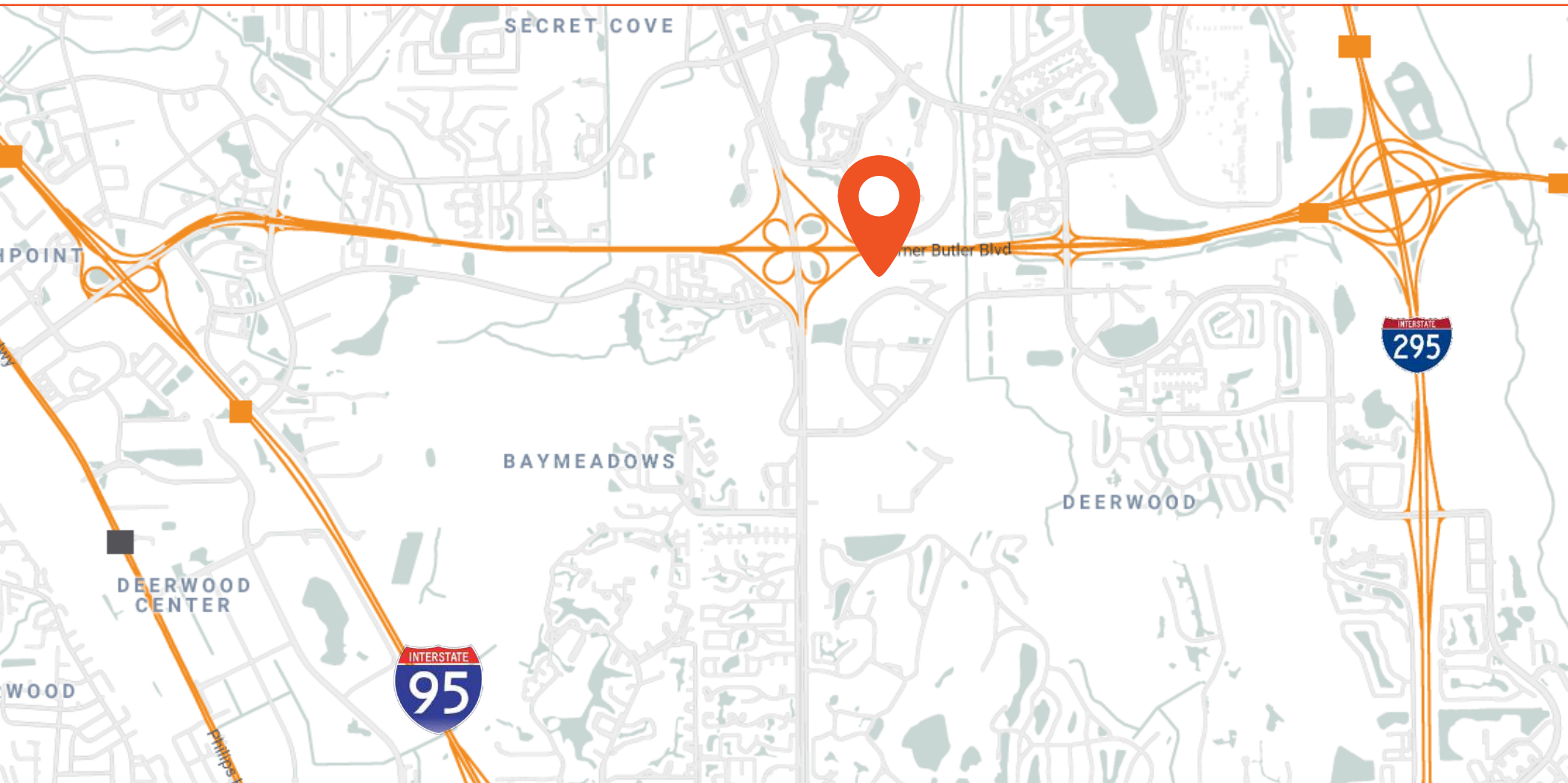
**FOUNDRY**  
COMMERCIAL

6440 Southpoint Pkwy.  
Suite 100  
Jacksonville, FL 32216

[foundrycommercial.com](http://foundrycommercial.com)

# CENTURION CENTRE I & II

10375 & 10407 CENTURION PKWY N, JACKSONVILLE, FL 32256



For more information, please contact:

**BRAD R. CHRISCHILLES**

Principal  
904.345.2020  
Brad.Chrischilles@foundrycommercial.com  
Licensed Real Estate Brokers

**ANDREW G. HAWKINS**

Senior Vice President  
904.345.2022  
Andrew.Hawkins@foundrycommercial.com  
Licensed Real Estate Brokers

Although the information contained herein was provided by sources believed to be reliable, Foundry Commercial makes no representation, expressed or implied, as to its accuracy and said information is subject to errors, omissions or changes.

**FOUNDRY**  
COMMERCIAL

6440 Southpoint Pkwy.  
Suite 100  
Jacksonville, FL 32216

[foundrycommercial.com](http://foundrycommercial.com)