

444 Scott Drive

Bloomington, Illinois

40,000 SF

Office Space



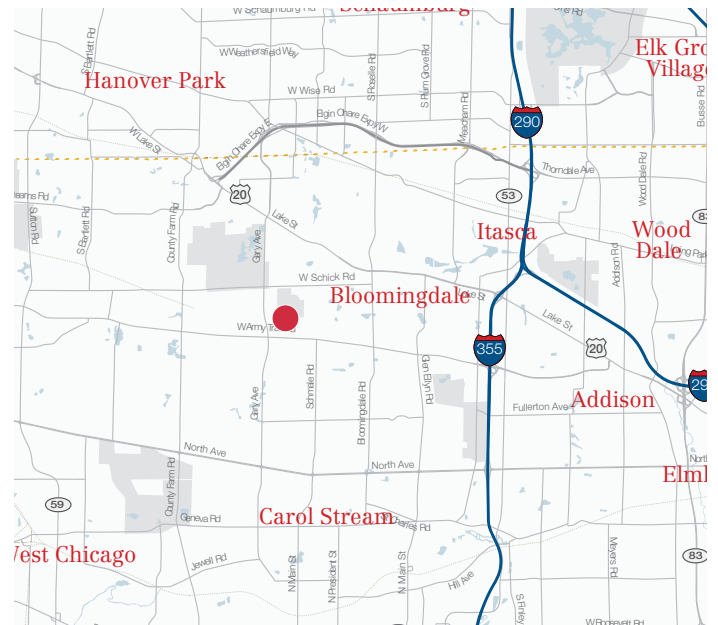
Prominent DuPage Location with Dense Parking

Property Features

- Four-story 80,000 SF Office Building
- Large efficient floor plates of +20,000 SF
- 20,000 to 40,000 SF Available for lease
- Dense Parking Ratio of up to 8 per 1,000
- Local Ownership with on-site management

Location Features

- Prime DuPage County Accessible Location via extended I-390 & Gary Avenue
- Less than 27 minute commute to O'Hare
- Less than 30 miles to downtown CBD
- Pace Bus Access via Route 711 with route to Wheaton Metra Station
- Metra Train Access via Schaumburg Station (4.8 miles), Wheaton Station (6 miles / Pace Route)
- Adjacent to Stratford Square Mall, including dining, entertainment and abundance of retail options



©2017 NAI Hiffman All rights reserved. All information contained herein is from sources deemed reliable; however, no representation or warranty is made to the accuracy thereof.

For leasing information contact

Jason Wurtz

630 693 0692 • jwurtz@hiffman.com

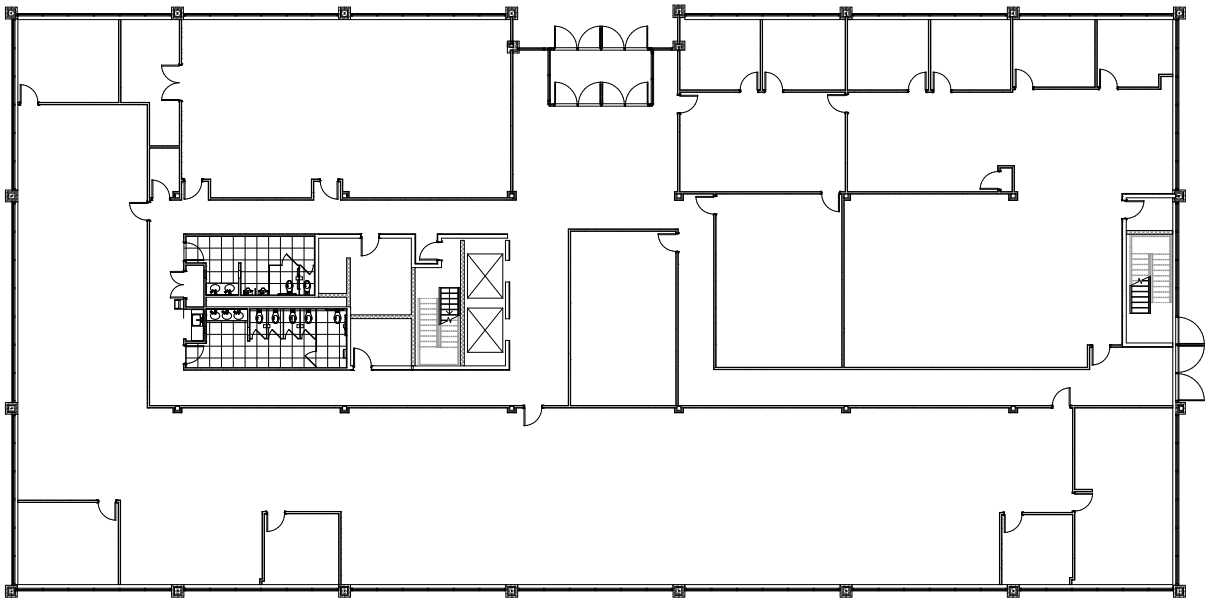
Michael Flynn

630 691 0600 • mflynn@hiffman.com

444 Scott Drive
Bloomington, IL



1ST FLOOR
20,000 SF



2ND FLOOR
20,000 SF

