



An Affiliate of High Real Estate Group LLC

Industrial/Commercial Realtors

► Greenfield Corporate Center



1808 Colonial Village Lane
Suite 102
Lancaster, PA 17601

Available Square Feet:

5,389 square feet

Lease Rate:

\$13.50/SF N/N/N

Description:

One floor free-standing office building. Perfect for consultants, accountants, psychologist, etc.

High Associates Ltd.

Call
Today!

717.293.4477

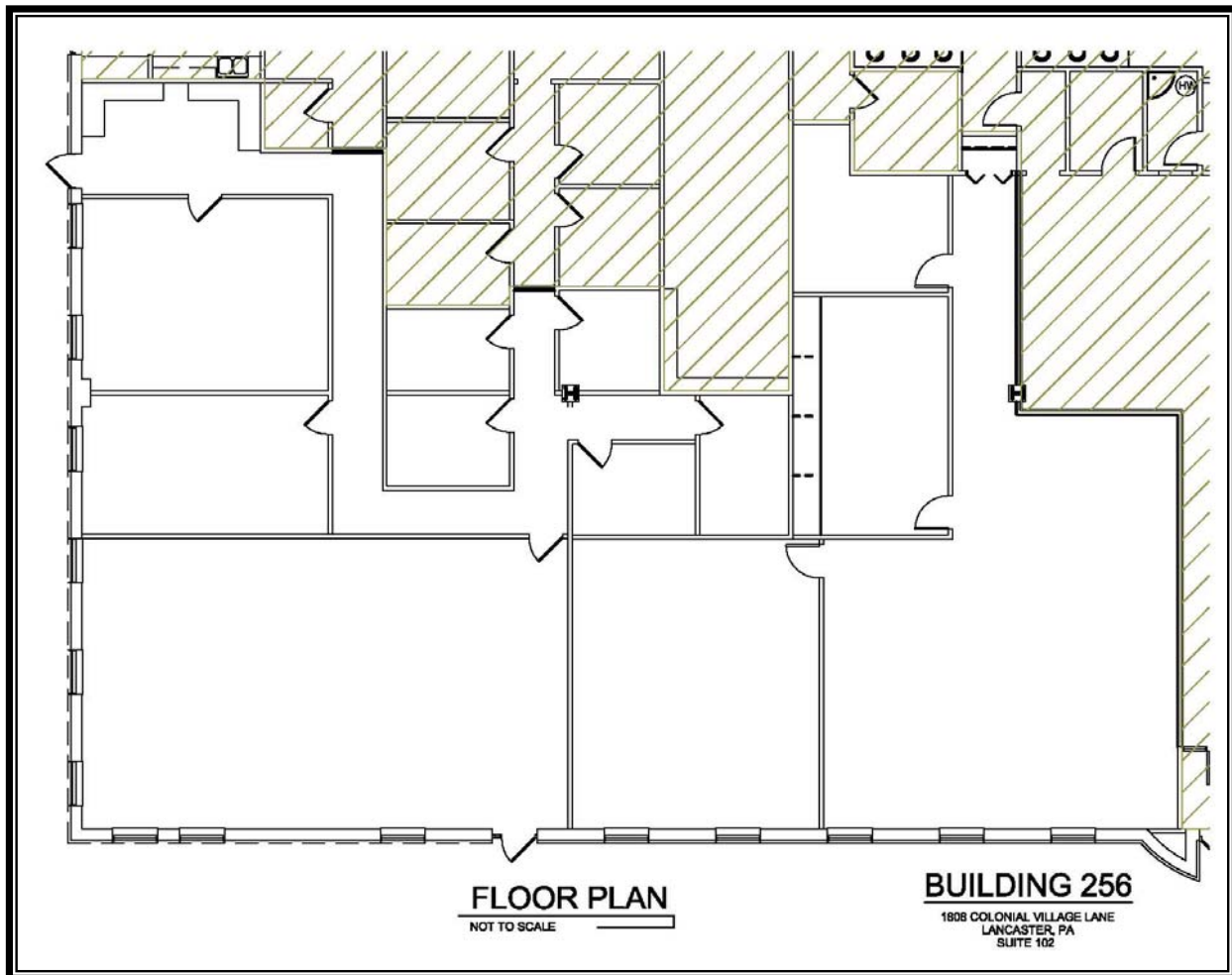
PROPERTY INFORMATION – BUILDING 256

Square Feet Available:	5,389 square feet
Office Square Feet:	5,389 square feet
Date Constructed:	1993
Type Construction:	Steel and masonry with brick façade
Ceiling Heights:	9' – 10'
HVAC:	Roof top gas fired furnace and air conditioning system
Lighting:	Fluorescent lighting fixtures with skylight at entrance
Electric:	110, 200 volt, single & 3-Phase
Water:	Public – City of Lancaster
Sewer:	Public – LASA
Gas:	UGI
Sprinklered:	Yes
Distance to Highway:	Adjacent to US Rt. 30 access
Acres:	2.925 acres

Parking: 14 parking spaces
Municipality: East Lampeter Township
County: Lancaster County
Tax Account#: 310-94689-0-0000
Zoning: Business Park Zoning

LEASING INFORMATION

Square Feet Available: 5,389 square feet
Rent Per SF: \$13.50/SF N/N/N
Annual Rent: \$72,752
Monthly Rent: \$6,063
CAM Charges: \$3.87/SF



Information furnished regarding property for rent is from sources deemed reliable, but is not guaranteed. No warranty or representation is made as to accuracy thereof and is submitted subject to errors, omissions, change of price, or other conditions, prior sale or lease or withdrawal without notice. No liability of any kind is to be imposed on the broker herein. High Properties, the property owner, and High Associates Ltd., the broker, are indirect subsidiaries of High Real Estate Group LLC.