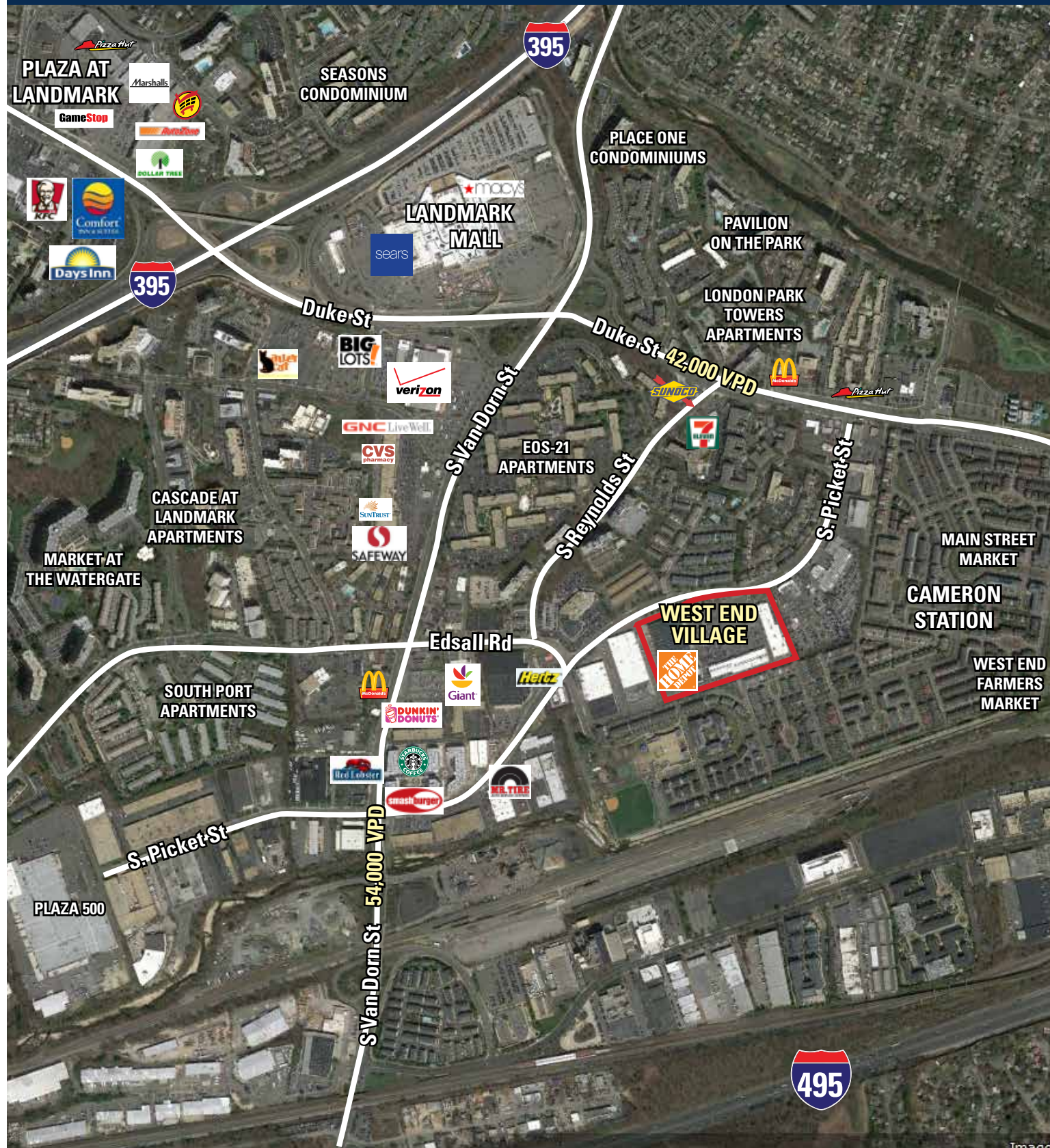


# RAPPAPORT

## WEST END VILLAGE Alexandria, Virginia

21,550 SF Anchor Space Available



# RAPPAPORT

## WEST END VILLAGE Alexandria, Virginia

21,550 SF Anchor Space Available



### THE TRADE CENTER FACTS-AT-A-GLANCE

- 180,950 SF Shopping Center
- Undergoing renovation, recently re-named "West End Village"
- Ideally situated in the largest and fastest-growing submarket in Alexandria, VA
- Ample parking with 862 surface spaces available
- Average household income is \$112,103 within a 5 mile radius
- Benefits from a daytime population looking for nearby services, shopping and restaurants

#### DEMOGRAPHICS

DEMOGRAPHICS (2016)	1 MILES	2 MILES	3 MILES
POPULATION	38,630	104,999	201,488
AVG HH INCOME	\$93,152	\$101,334	\$112,540
EMPLOYEES	11,469	33,961	88,987

Space	SF	Tenant Name
1	102,698	The Home Depot
2	6,053	Mattress Warehouse
3	1,987	Signs by Tomorrow
4	1,987	New Image Hair Salon
5	1,986	King's Cleaners
6	1,987	Pies Fitness Yoga
7	3,200	Salon Centric
8	2,283	Comcast
9	4,567	U.S. Postal Service
10	2,283	One Kick Martial Arts
11	2,283	Taste of Asia
12	2,283	Ace Hair & Wigs
13	3,000	Nova Overstock
14	6,300	Mediterranean Bakery
15	22,150	Available
16	3,200	City Kitchen
17	3,103	Gymboree
18	9,600	Wiygul Automotive

