

Under **New  
Ownership!**



*For Lease*

### **Warehouse / distribution space available**

- Available space from 4,800 s.f. to 8,640 s.f.
- Dock and drive-in loading
- 17'6" ceiling heights
- Ideal for warehouse, distribution, and light manufacturing
- On-site property management
- Easy access to I-95, I-64, I-295, and 895
- Approximately 2 miles from Richmond International Airport
- Close proximity to area shopping, restaurants, and hotels

### **Byrd Center – Building 3**

**5002-5004 Byrd Industrial Drive  
Richmond, VA 23229**

---

**Chris Avellana**  
+1 804 200 6468  
[chris.avellana@am.jll.com](mailto:chris.avellana@am.jll.com)

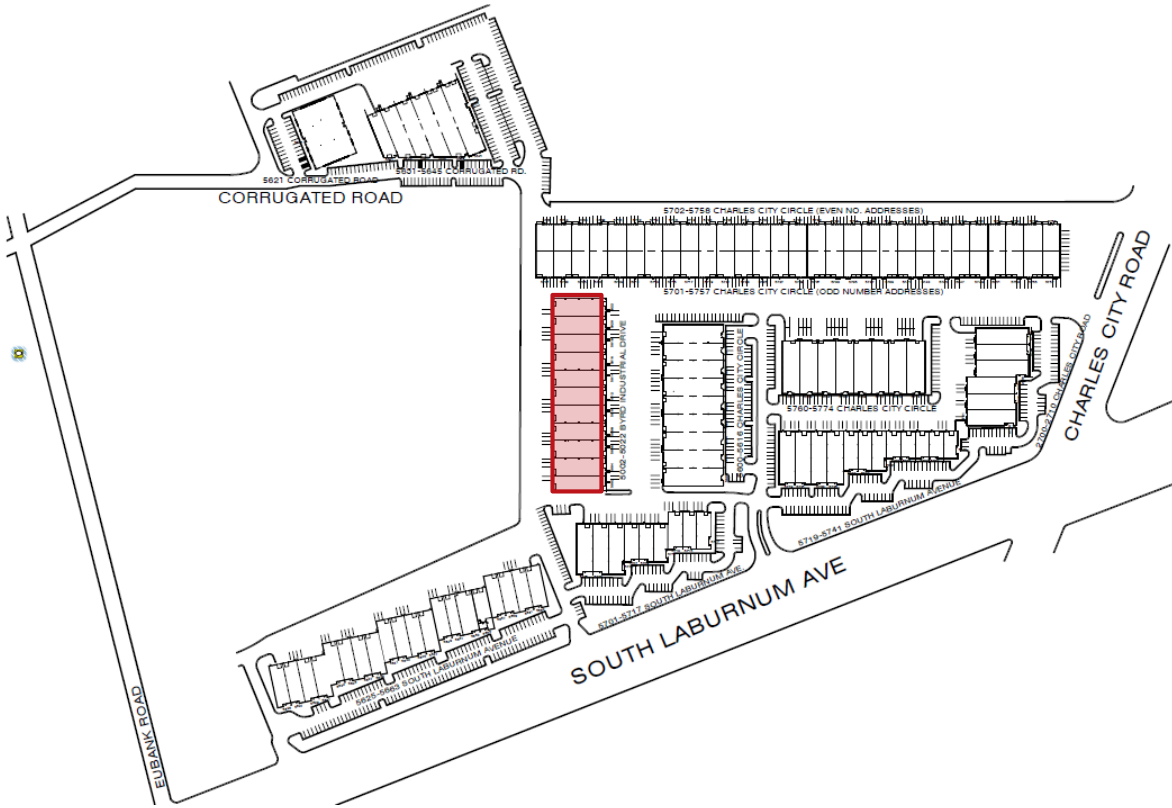
**Jake Servinsky**  
+1 804 200 6428  
[jake.servinsky@am.jll.com](mailto:jake.servinsky@am.jll.com)

---

[jll.com/richmond](http://jll.com/richmond)



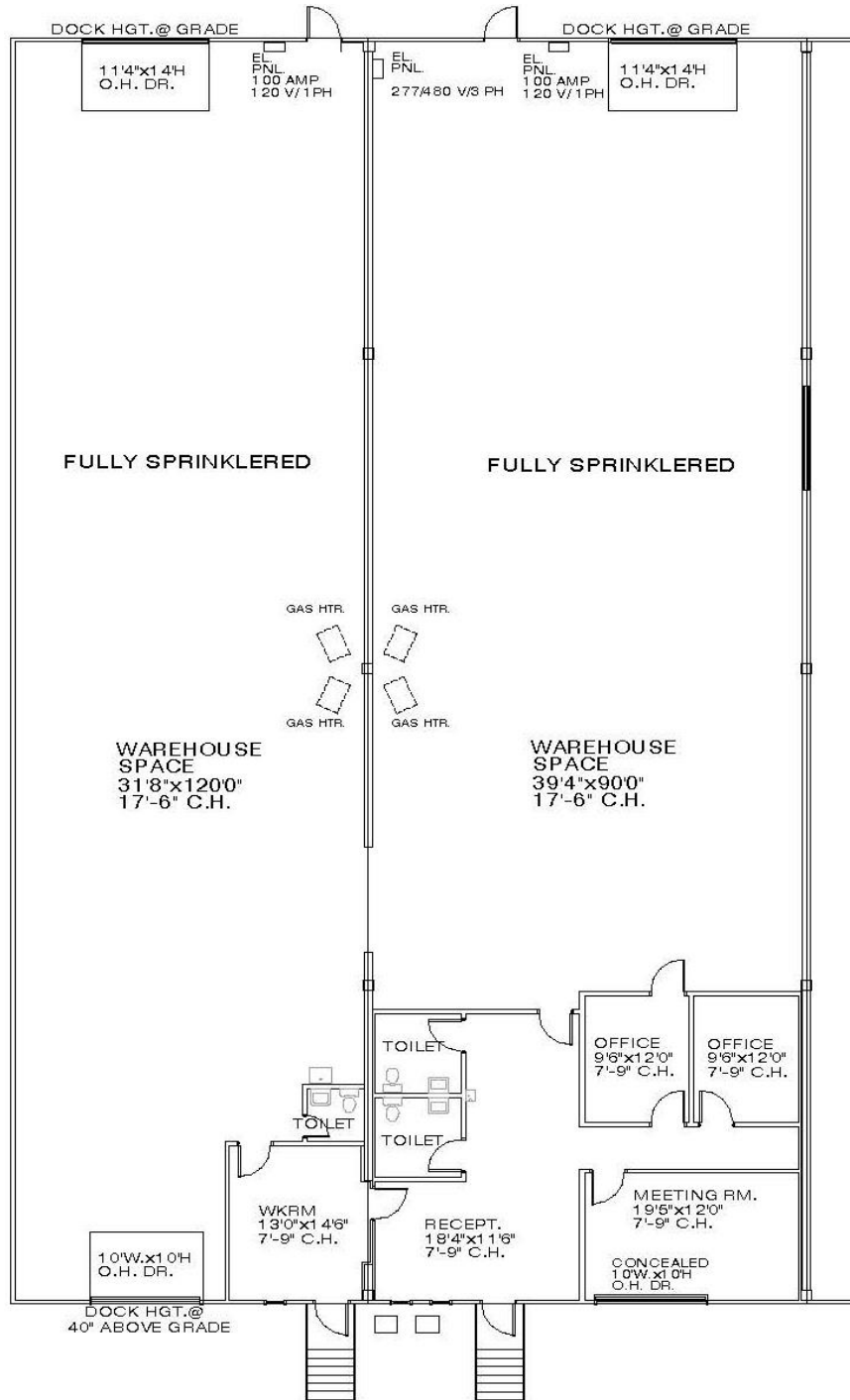
# Site plan



# Aerial

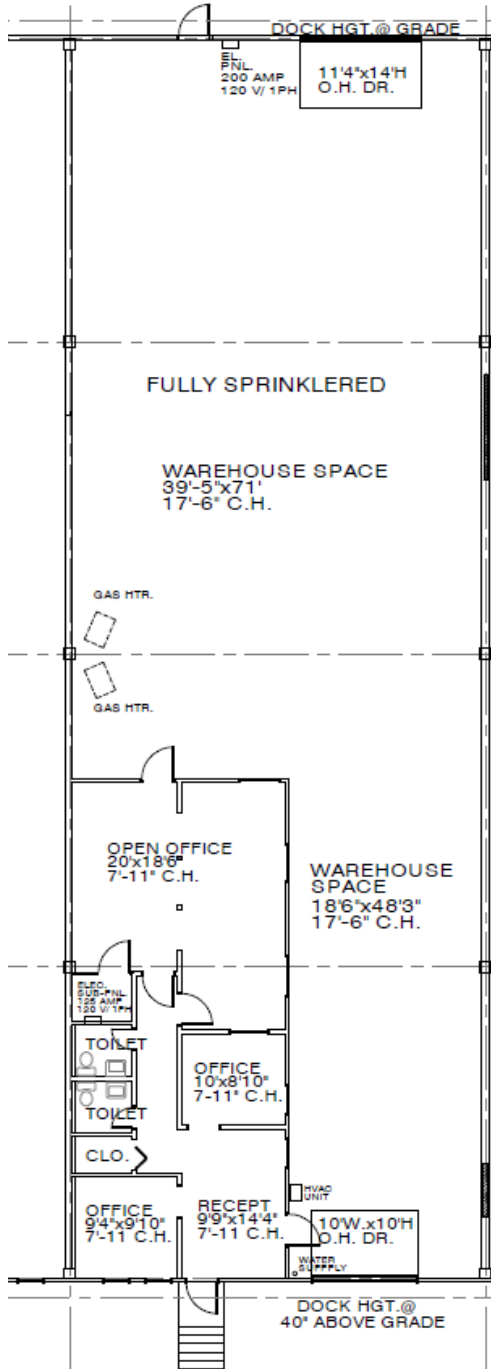


# Floor plans

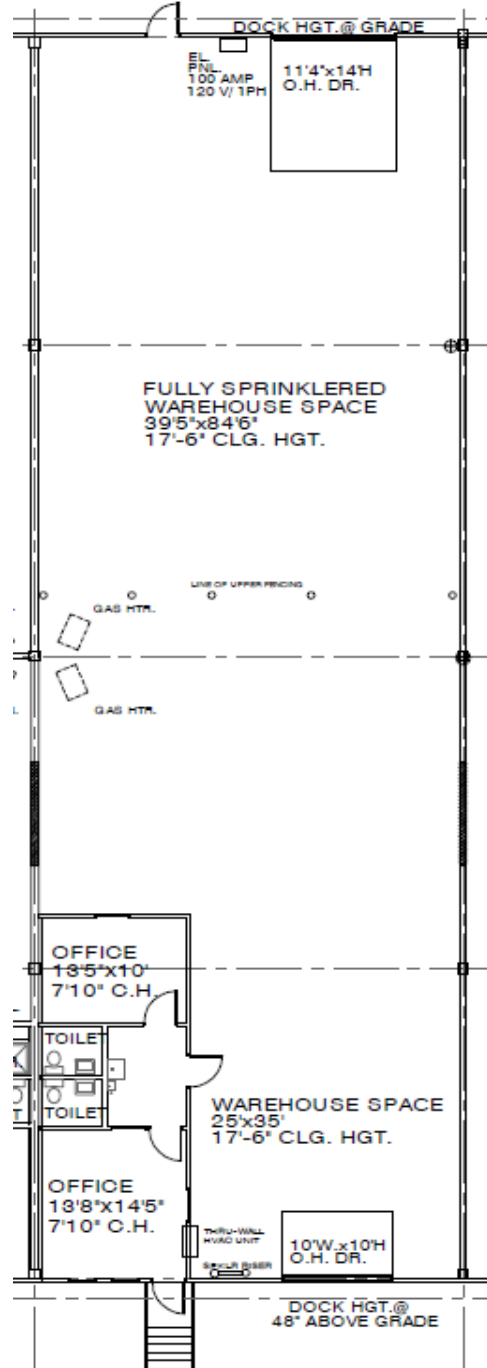


Suite 5002 – 5004: 8,640 s.f.

# Floor plans

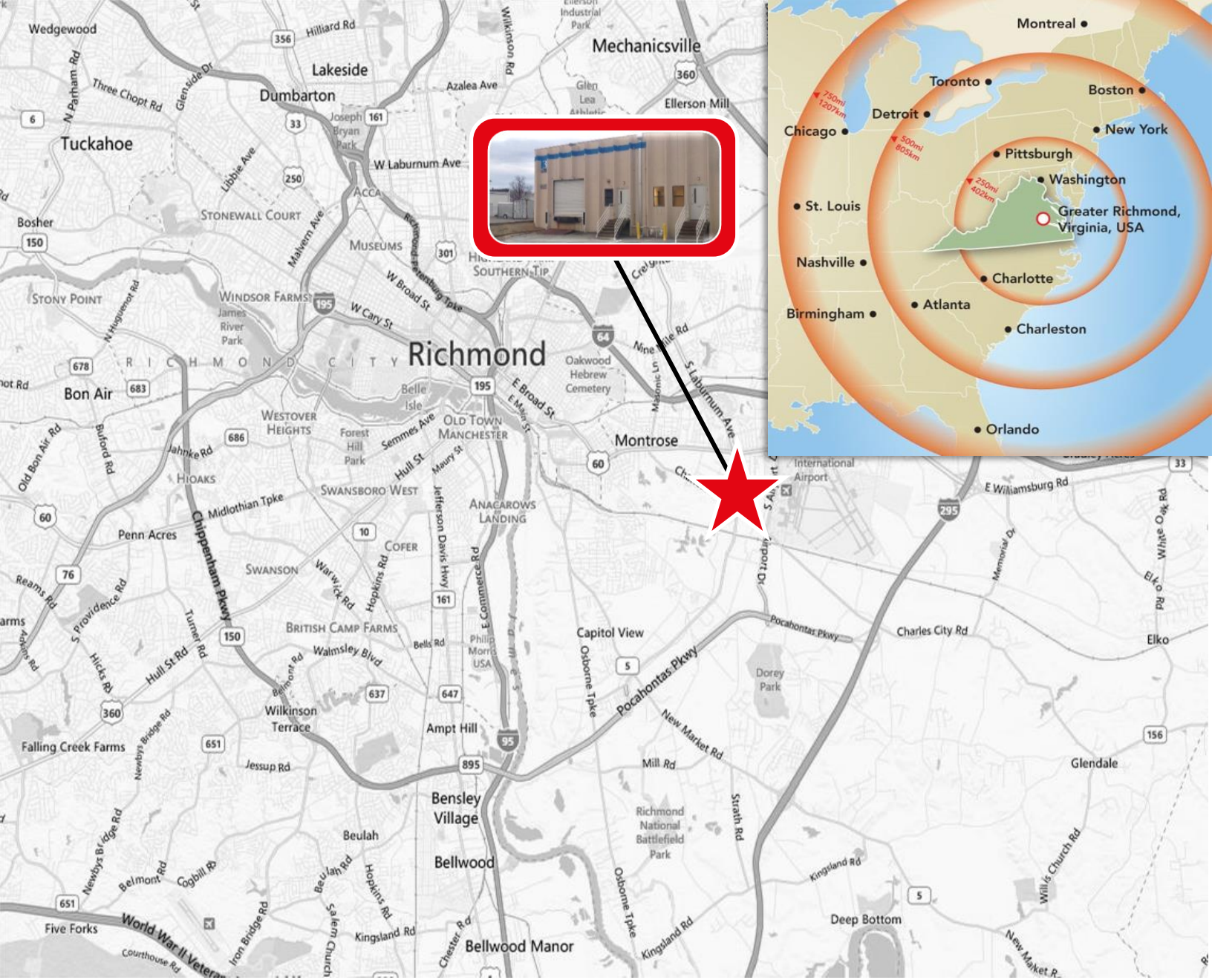


Suite 5008: 4,800 s.f.



Suite 5014: 4,800 s.f.





**For more information, contact:**

Chris Avellana  
+1 804 200 6468  
[chris.avellana@am.jll.com](mailto:chris.avellana@am.jll.com)

Jake Servinsky  
+1 804 200 6428  
[jake.servinsky@am.jll.com](mailto:jake.servinsky@am.jll.com)

Although information has been obtained from sources deemed reliable, Owner, Jones Lang LaSalle, and/or their representatives, brokers or agents make no guarantees as to the accuracy of the information contained herein, and offer the Property without express or implied warranties of any kind. The Property may be withdrawn without notice. If the recipient of this information has signed a confidentiality agreement regarding this matter, this information is subject to the terms of that agreement. ©2017, Jones Lang LaSalle. All rights reserved.

