

LEASE | RETAIL SPACE

1151 DUNDAS STREET WEST

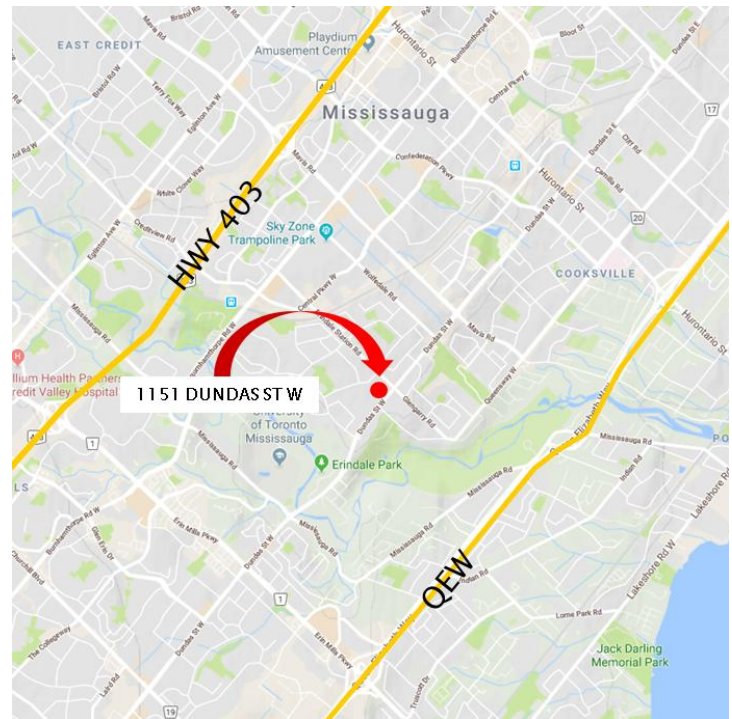
PREMIUM RETAIL SPACE



UNIT	SIZE	NET	CAM	REALTY TAX
13	1,700 SF	\$22.00 PSF	\$11.00 PSF	\$4.97 PSF
M1-4	10,916 SF	\$10.00 PSF	\$5.24 PSF	\$4.97 PSF

UNIT M1-4 HIGHLIGHTS:

- New entrance/design
- New flooring, ceiling, lighting and electrical fixtures
- New panels, new sprinkler system, plumbing/drainage installations
- Opportunities for podium signage, building fascia signage, interior mall signage, wall signage and directories
- 2 truck level doors dedicated for shipping and storage
- Interior mall access as well as exterior to parking



Steven Gottdank* | Vice President
905 247 9221
sgottdank@lennard.com

Bob Cranch* | Vice President
905 247 9223
bcranch@lennard.com

West Office
602 - 350 Burnhamthorpe Road W
Mississauga, ON L5B3J1
905 625 5020 | lennard.com

*Sales Representative
Statements and information contained are based on the information furnished by principals and sources which we deem reliable but for which we can assume no responsibility.

LENNARD PERFORMANCE

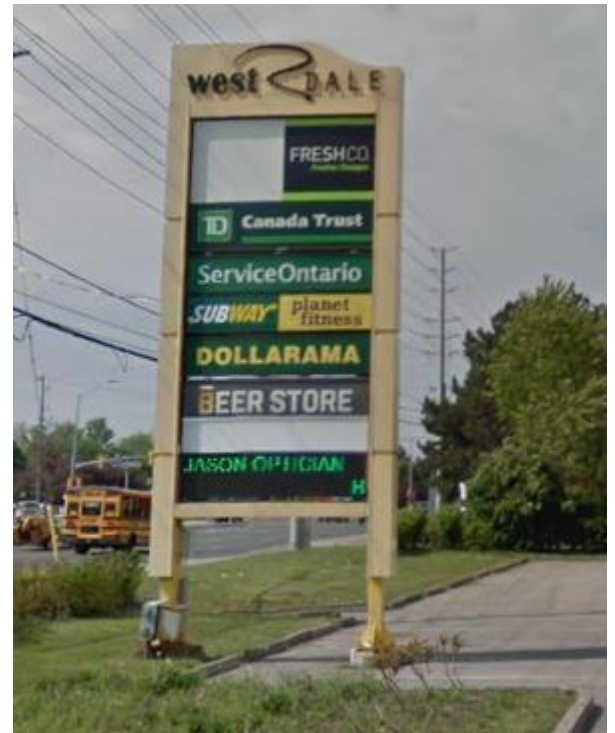
LEASE | RETAIL SPACE

1151 DUNDAS STREET WEST



Westdale Mall is located on the busy intersection of Dundas Street West and Erindale Station Road, Mississauga.

The plaza is surrounded by high-density dwellings, with a built-in customer base and strong anchor tenants such as FreshCo, Service Ontario, TD Bank, Dollarama, Bank of Montreal, Pharmasave, Winners & Planet Fitness, to name a few.



Steven Gottdank* | Vice President
905 247 9221
sgottdank@lennard.com

Bob Cranch* | Vice President
905 247 9223
bcranch@lennard.com

West Office
602 - 350 Burnhamthorpe Road W
Mississauga, ON L5B3J1
905 625 5020 | lennard.com

*Sales Representative
Statements and information contained are based on the information furnished by principals and sources which we deem reliable but for which we can assume no responsibility.

LENNARD PERFORMANCE