

# FOR LEASE

WWW.INSITEREALTY.COM

**WEST LOOP BUSINESS PARK**  
9,706 SQUARE FEET



**1212 NORTH POST OAK**  
**SUITE 100**  
**HOUSTON, TEXAS**

## PROPERTY FEATURES

- 100% OFFICE
- CONCRETE TILT WALL BUILDINGS WITH BRICK EXTERIOR AND RECESSED OFFICE ENTRIES
- GRADE LEVEL REAR LOADING WITH 12' CLEAR HEIGHT
- SECURITY PATROL AND EXTERIOR SECURITY LIGHTING
- NORTH POST OAK MONUMENT SIGNAGE AVAILABILITY
- DSL AND TI SERVICE AVAILABILITY
- EASILY ACCESSIBLE FROM I-10, LOOP 610 AND US 290
- APPROXIMATELY 1/4 MILE FROM THE NORTHWEST METRO TRANSIT CENTER (BUS STOP LOCATED DIRECTLY IN FRONT OF PROJECT)



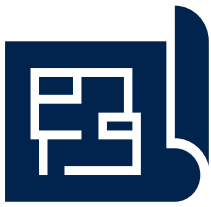
**FOR MORE INFORMATION PLEASE CONTACT**

**LOGAN GREER • LGREER@INSITEREALTY.COM • 713.339.5363**

**DAYNE WUNDERLICH • DWUNDERLICH@INSITEREALTY.COM • 713.339.5329**

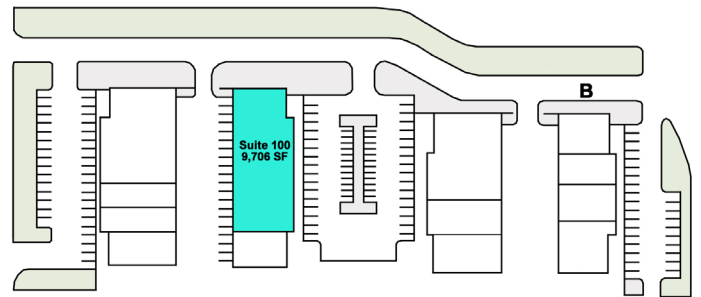
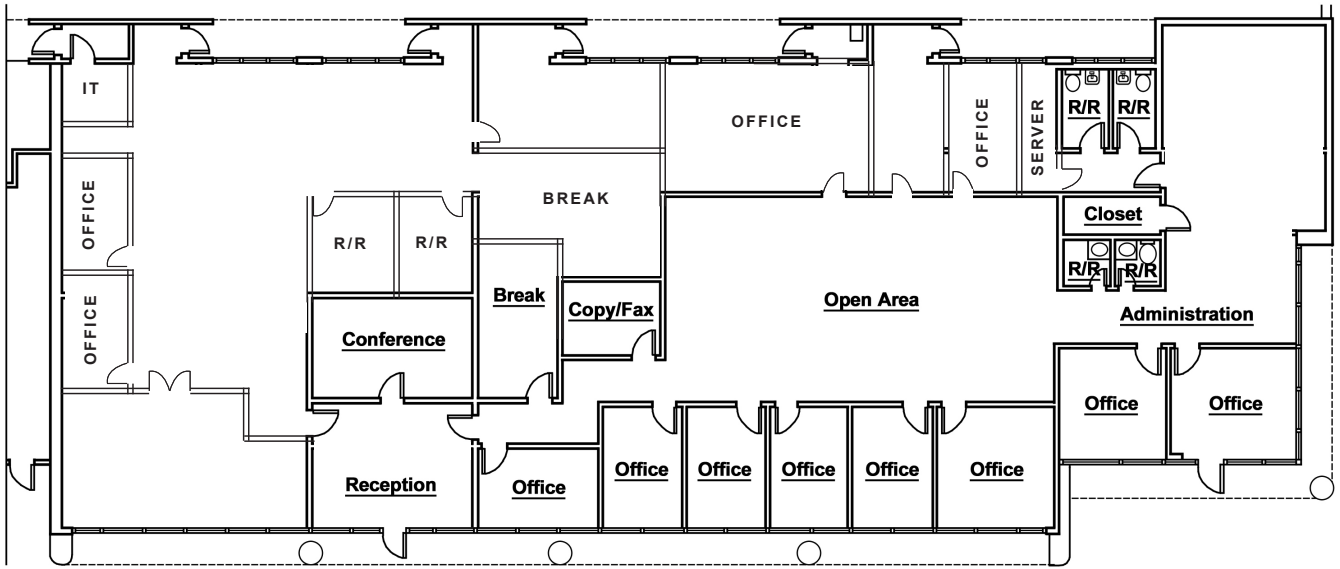


The information contained herein was obtained from sources believed reliable; however, InSite Realty Partners, L.P. makes no guarantees, warranties or representations as to the completeness or accuracy thereof. The presentation of this property is submitted subject to errors, omissions, change of price or conditions, prior sale or lease, or withdrawal without written notice.



# WEST LOOP BUSINESS PARK-SUITE 100

## FLOOR PLAN



**FOR MORE INFORMATION PLEASE CONTACT**

**LOGAN GREER • LGREER@INSITEREALTY.COM • 713.339.5363**

**DAYNE WUNDERLICH • DWUNDERLICH@INSITEREALTY.COM • 713.339.5329**

The information contained herein was obtained from sources believed reliable; however, InSite Realty Partners, L.P. makes no guarantees, warranties or representations as to the completeness or accuracy thereof. The presentation of this property is submitted subject to errors, omissions, change of price or conditions, prior sale or lease, or withdrawal without written notice.