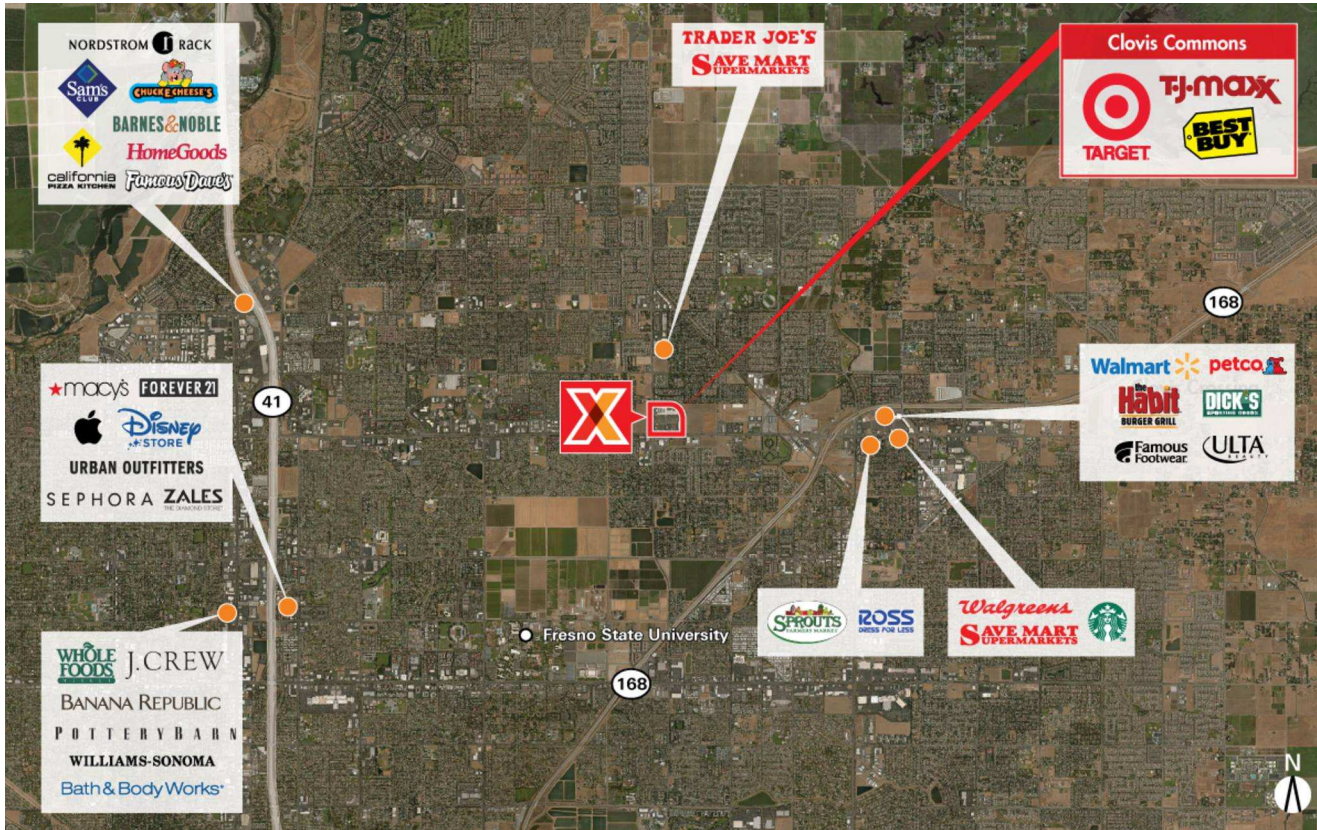


Fresno, CA

CLOVIS COMMONS

36.839200, -119.727000
695 W Herndon Ave | Clovis, CA 93612



CENTER SIZE: 174,990 SF



DEMOGRAPHICS	1 MILE	3 MILE	5 MILE
👤	12,850	130,897	284,093
🏠	4,559	47,992	101,987
💰	\$89,890	\$77,408	\$77,263

Situated at the major intersection of W Herndon Ave and N Willow Ave with 35,000+ VPD

Surrounded by affluent population of 130,000+ people with an average household income of \$77,000+ in 3 miles

Strong tenant mix of national retailers including Target, Best Buy, T.J. Maxx, Starbucks Coffee Company & PetSmart

Located in close proximity to California State University, Fresno with 20,000+ students

Fresno, CA

CLOVIS COMMONS

36.839200, -119.727000
695 W Herndon Ave | Clovis, CA 93612



N
1831 - 01.16.18

AVAILABLE SPACE

A800	2,400 SF
B100	3,200 SF
C200	4,953 SF
F104	1,700 SF

CURRENT RETAILERS

A200	Office Depot	20,500 SF
A300	T.J. Maxx	28,000 SF
A500	Best Buy	30,000 SF
A600	Brain Balanced Achievement Center	2,920 SF
B-500A	Nothing Bundt Cakes	2,093 SF
B-500B	Creamistry	1,407 SF
B200	Fantasy Nails & Spa	2,100 SF
B300	Kumon	1,305 SF
B400	Cool Cuts 4 Kids	1,050 SF
C300	Dollar Tree	9,074 SF
C400	PetSmart	27,366 SF
C500/501	JR's Sports Collectibles	2,470 SF
C502	Facelogic Essential Skin Care	1,235 SF
C503	Embroid - Me	1,235 SF
C504	Pete's Teriyaki Express	1,235 SF
C505	Massage Envy	3,266 SF
C507	Antonio's Mexican Resturant	1,739 SF
D100	Farmer Boys	1 SF
D200	The Broilers	1,820 SF
D210	The Sequoia Sandwich Company	3,000 SF
D250	The Mad Duck	2,080 SF
D300	Starbucks	1,700 SF
D301-A	FAB Looks	1,000 SF
D301-B	GNC	1,000 SF
D302	Nextel	1,800 SF
E100	Round Table Pizza	4,028 SF
E300	Subway	1,500 SF
E400	Jamba Juice	1,502 SF
F100	Chronic Tacos	2,488 SF
F101	Menchie's Frozen Yogurt	1,209 SF
F102	GameStop	1,485 SF
F103	Cost Cutters	1,155 SF
G100	El Pollo Loco	1 SF
N.A.P.	Target	