

# PRINCETON MEDICAL ARTS PAVILION

5 Plainsboro Road, Plainsboro, NJ



## BUILDING DETAILS

- The Princeton Medical Arts Pavilion on the campus of University Medical Center of Princeton at Plainsboro is a Class A building built simultaneously with the University Medical Center of Princeton and connects to the Center physically via corridors on the first and second floors allowing for access to clinical institutions and amenities such as café, gift shop, etc.
- LEED Certified, energy efficient building
- The medical office building is five stories and is designed to house functional space for an ambulatory center, diagnostics, radiology and offices for private physicians
- Covered patient drop-off and pick-up



## AVAILABILITY

- Floor 3 - 4,270 SF
- Floor 4 - 9,219 SF (*divisible by 2,500 SF*)
- Floor 5 - 8,725 SF (*divisible by 2,500 SF*)  
1,738 SF



For more information, contact:

Milt H. Charbonneau, SIOR  
Senior Vice President  
609 497 0090  
[milt.charbonneau@cushwake.com](mailto:milt.charbonneau@cushwake.com)



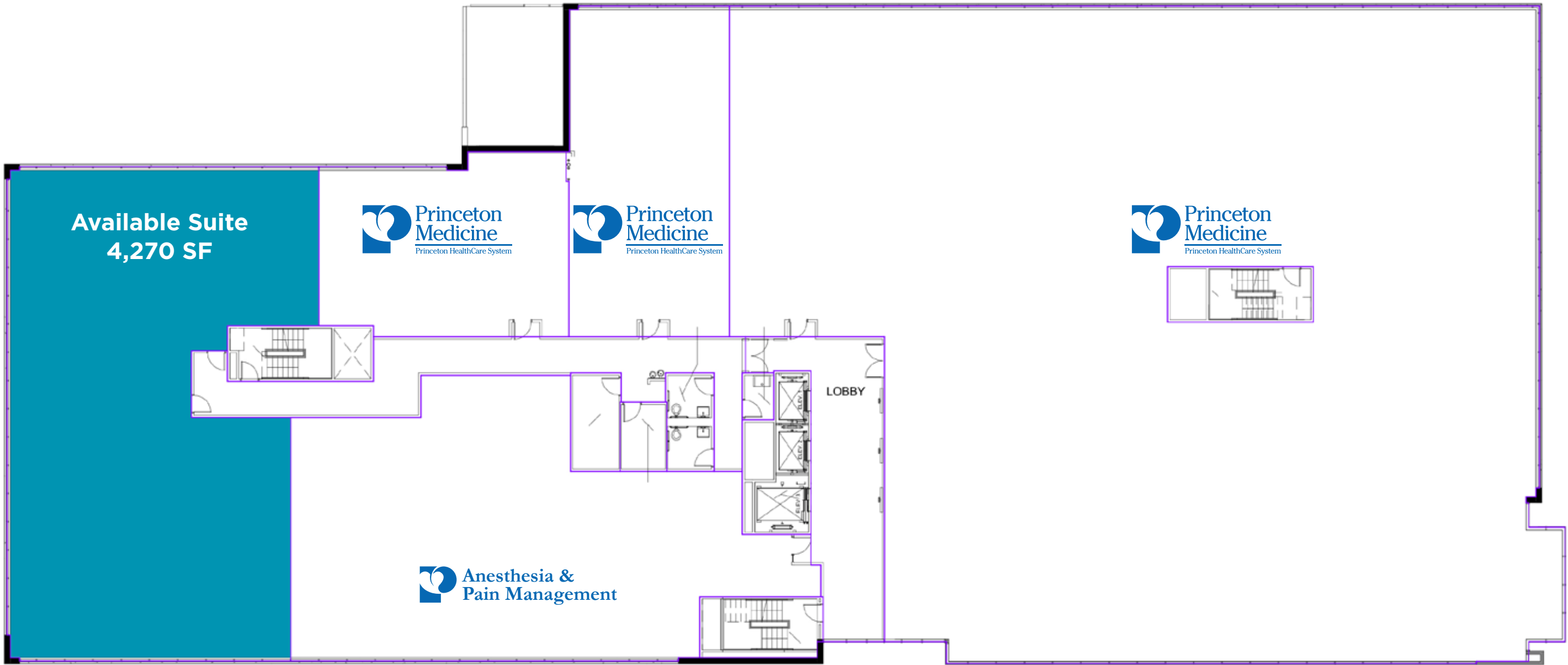


# PRINCETON MEDICAL ARTS PAVILION

5 Plainsboro Road, Plainsboro, NJ



## 3rd Floor

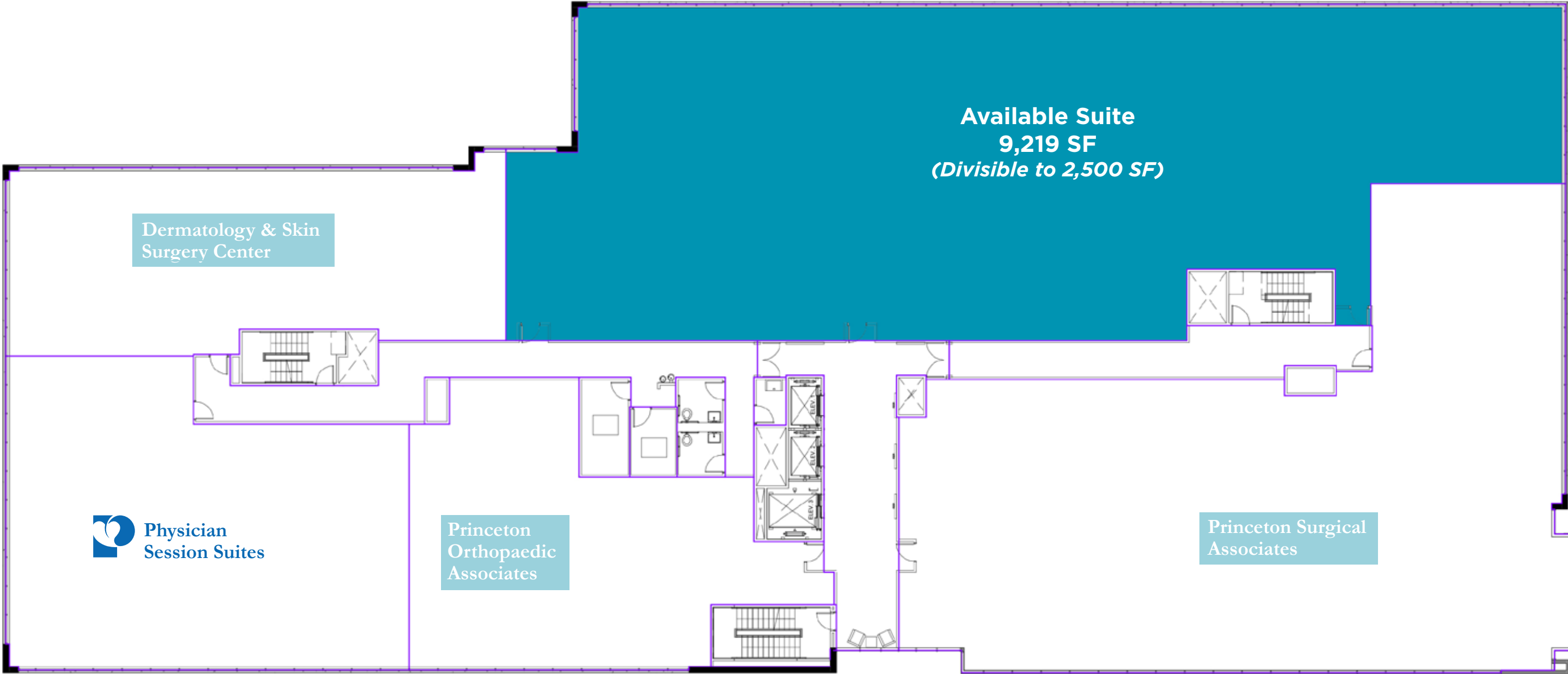


# PRINCETON MEDICAL ARTS PAVILION

5 Plainsboro Road, Plainsboro, NJ



## 4th Floor

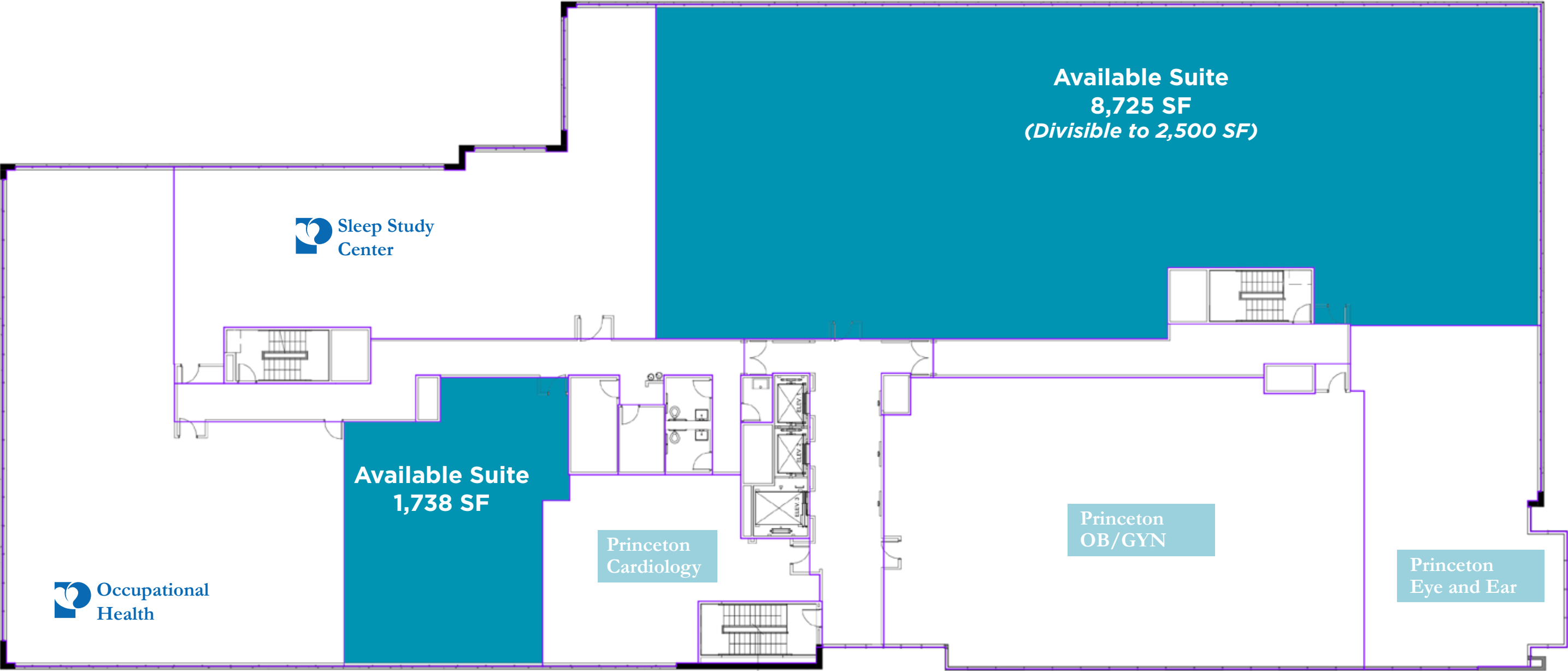


# PRINCETON MEDICAL ARTS PAVILION

5 Plainsboro Road, Plainsboro, NJ

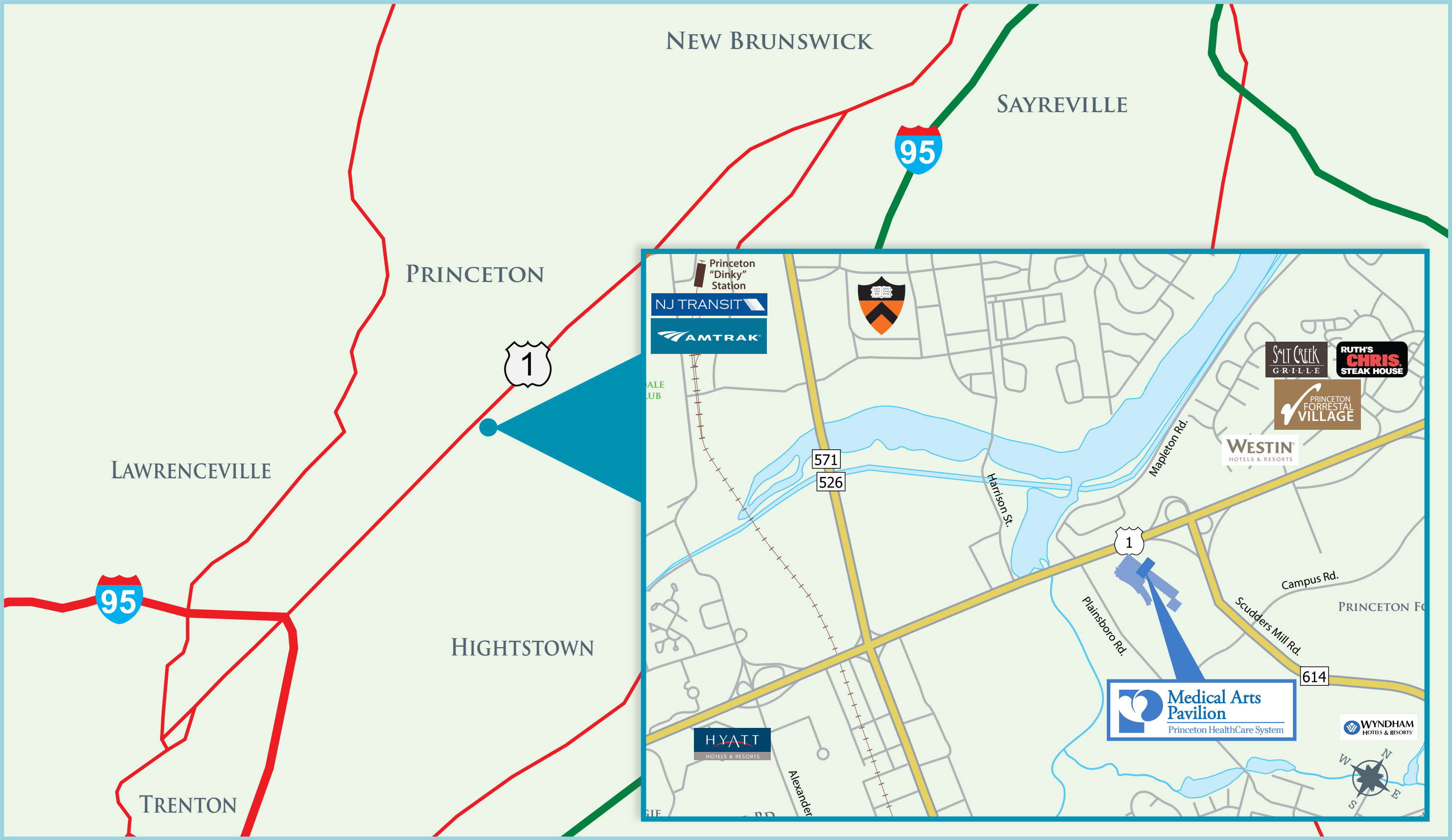


## 5th Floor



# PRINCETON MEDICAL ARTS PAVILION

5 Plainsboro Road, Plainsboro, NJ



# PRINCETON MEDICAL ARTS PAVILION

5 Plainsboro Road, Plainsboro, NJ



- A Atkinson Pavilion/Hospital:**
- Acute Care for the Elderly (ACE)
  - Acute Rehabilitation
  - Center for Eating Disorders Care
  - Center for Maternal & Newborn Care:
    - Labor & Delivery
    - Neonatal Intermediate Care Unit
    - Nursery
    - Mother-Baby Unit
  - Center for Neuroscience Care
  - Center for Testing & Treatment:
    - Blood Donor Program
  - Dialysis
  - Edward & Marie Matthews Center for Cancer Care
  - George & Estelle Sands Center for Cardiac & Pulmonary Care
  - Institute for Surgical Care:
    - Jim Craigie Center for Joint Replacement
    - Peri-Operative Unit
    - Post-Anesthesia Care Unit (Recovery)
    - Pre-Admission Testing
    - Surgical Care Unit
  - Llura & Gordon Gund Center for Critical Care
  - Medical/Neurology/Oncology/Psych
  - Regan Family Center for Pediatric Care:
    - UMCPP-CHOP: Partners in Pediatric Care
  - Telemetry Unit
- B Center for Emergency Care (Emergency Department)**
- Imaging
  - Interventional Suite/Operating Rooms
- C Medical Arts Pavilion (MAP):**
- Department of Medicine
  - Department of Surgery
  - Occupational Health
  - Outpatient Imaging Center
  - Outpatient Laboratory
  - Princeton Medicine
  - Sleep Center
  - Stephen & Roxanne Distler Center for Ambulatory Surgery
  - Women's Imaging & Penn Maternal Fetal Medicine at UMCPP
- D Education Building:**
- Administration
  - Bristol-Myers Squibb Community Health Center
  - Chapel of Light
  - Clinical Lab
  - Community Connection
  - Diabetes Management Program
  - Education Center
  - Human Resources
  - Information Systems
  - Medical Staff Services
  - Medical Records
  - Medical Library & Business Center
  - Performance Improvement & Infection Control
  - Respiratory Therapy
  - Security
  - Social Services
  - Switchboard Operator/Scheduling
  - Volunteer Services
- E Fitness & Wellness Center**
- Krogh Outpatient Rehabilitation
- F Power Plant**



# PRINCETON MEDICAL ARTS PAVILION

5 Plainsboro Road, Plainsboro, NJ

