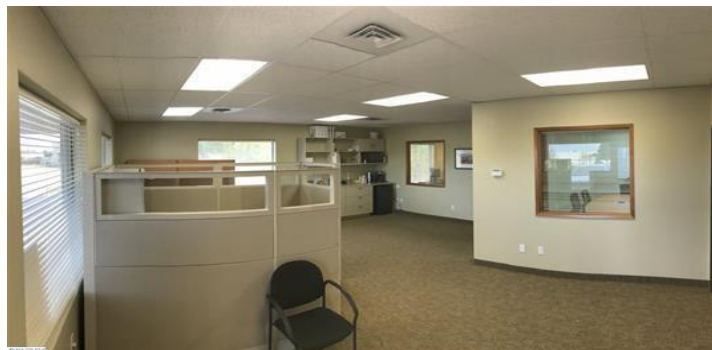


# SUB-LEASE

# NAI Tri-Cities

## 8033 W. Grandridge Blvd Ste A Kennewick, WA 99337



### Property Features

- 1,327 Sqft Private Office setting.
- Offering this 3 office's, conference room,
- large entrance with work station
- Parking is 10+ spaces.
- **Rent: \$1,800.00 Per Month**



**Todd Sternfeld**

[Todd@Naitcc.com](mailto:Todd@Naitcc.com)

509.539.3998 Cell

509.943.5200 Office

509.943.5244 Fax

# NAI Tri-Cities

Commercial Real Estate Services, Worldwide.

89 Gage Blvd

Richland, WA 99352

509-943-5200

[www.naitri-cities.com](http://www.naitri-cities.com)

**Jazmine Murillo**

[Jazmine@Naitcc.com](mailto:Jazmine@Naitcc.com)

509.792-0428 Cell

509.943.5200 Office

509.943.5244 Fax