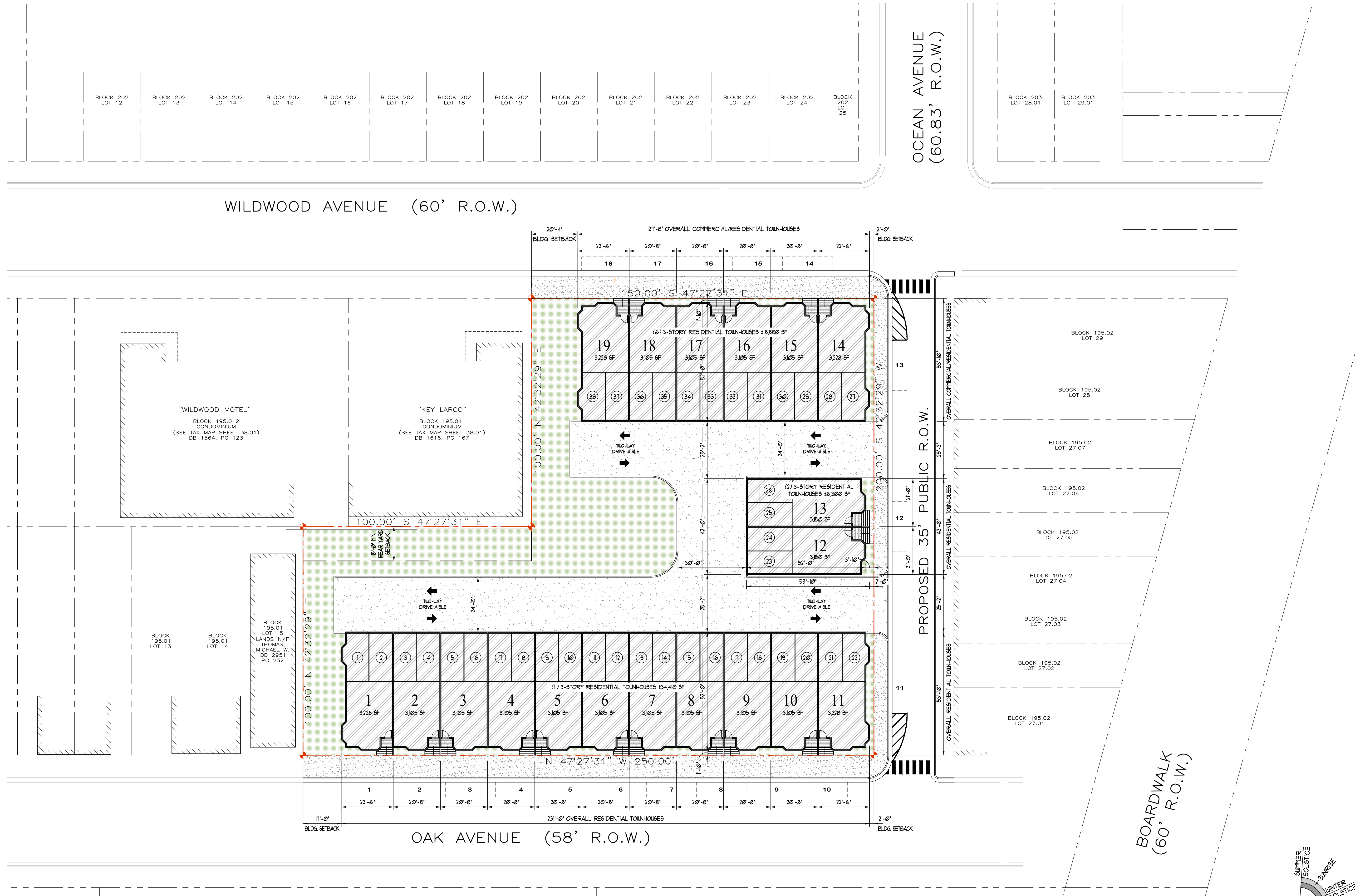


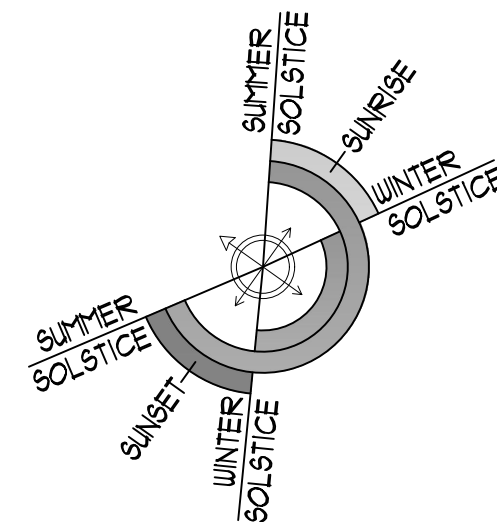
S:\osk\6-C2\1863-01 - Parkside Park Site Plan Concepts\1.dwg, BP=3, 4/2/2018 9:11:10 PM



1 PROPOSED SITE PLAN - SCHEME #3
SCALE: 1" = 20'-0"

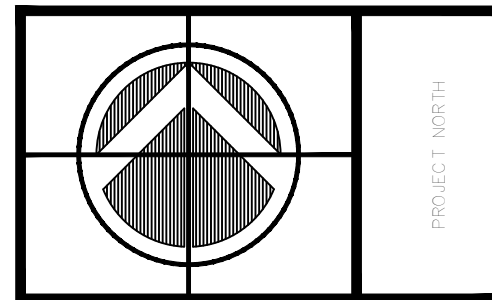
PROPOSED LOT AREA - 44,000 SF (1.01 ACRES)
PROPOSED BUILDING COVERAGE - 20,685 SF (47.0%)
PROPOSED LOT COVERAGE - 35,200 SF (80.0%)

PROPOSED ON-SITE RESIDENTIAL PARKING SPACES - (38) SPACES
PROPOSED OFF-SITE PARKING SPACES - (18) SPACES
TOTAL PARKING SPACES - (56) SPACES

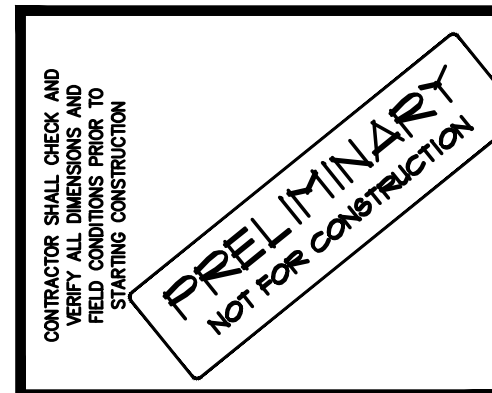


ALL DRAWINGS COPYRIGHT © OSK DESIGN PARTNERS, P.A. ALL RIGHTS RESERVED

OSK DESIGN PARTNERS, P.A.
ARCHITECTS AND LAND PLANNERS
www.oskdesignpartners.com
17 WEST KNIGHT AVENUE, SUITE 200,
COLLINGSWOOD, NEW JERSEY 08108
FOUNDER: JOHN J. OLIVERI (1956-1999)
PRINCIPAL: DANIEL A. SHOLSKY, AIA, PP, NCARB
PRINCIPAL: PAUL CALKINS, AIA, PP, NCARB
PARTNER: GERALD S. BLACKMAN, JR., AIA, PP, NCARB
ASSOCIATE: STEVEN J. BOLDINO, AIA, NCARB
ASSOCIATE: BRAD J. WAMER, AIA, NCARB, LEED AP
• MASSACHUSETTS • NEW JERSEY • NEW YORK • PENNSYLVANIA • VIRGINIA • WEST VIRGINIA • WISCONSIN



PROPOSED RESIDENTIAL DEVELOPMENT
OAK AVENUE & WILDWOOD AVENUE
CITY OF WILDWOOD, NEW JERSEY
PROJECT
DWG. TITLE
CONCEPTUAL SITE PLAN - SCHEME #3



REVISIONS:	DATE

DRAWN BY: BJW
CHECKED BY: JJB
DATE: 4-2-2018
SCALE:

JOB NO. 1863.01

SP = 3