

# 3464 NORTH LINCOLN AVENUE

lakeview / chicago, il



MID-AMERICA<sup>®</sup> URBAN

AVAILABLE NOW



# 3464 NORTH LINCOLN AVENUE

lakeview / chicago, il

## ADDRESS

3462 North Lincoln Avenue  
Southwest corner of Lincoln and Cornelia Avenues

## AVAILABILITY

2,214 SF

## DEMOGRAPHICS

	.5M	1M	1.5M
AVG HOUSEHOLD INCOME	\$166,455	\$156,720	\$129,521
POPULATION	17,908	65,246	148,492
DAYTIME POPULATION	11,823	42,086	103,513

## CO-TENANTS

Target, Whole Foods, PetSmart, XSport  
Fitness, Reverb, Chicago Music Exchange,  
Paulina Meat Market

## FEATURES

Prominent corner on ground floor of new boutique,  
designer apartment building

33' of frontage on Lincoln 40' of frontage on Cornelia

50'+ of depth and 15'+ ceilings

Prepped for black iron

Considerable new retail and residential development in  
immediate area

18 apartments above

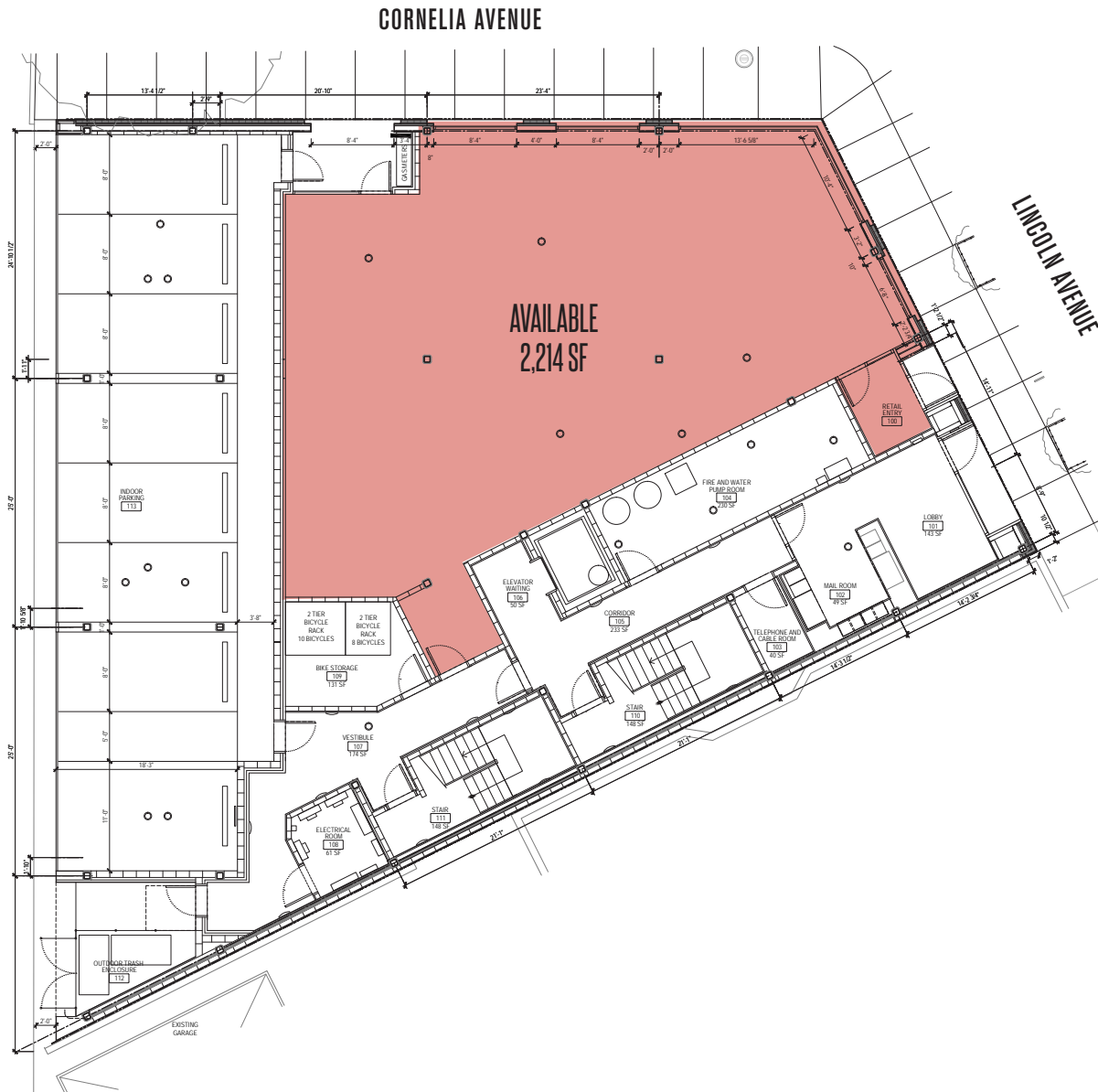
## SPACE DETAILS



# 3464 NORTH LINCOLN AVENUE

lakeview / chicago, il

FLOOR PLAN



SPACE DETAILS

2,214 SF



# 3464 NORTH LINCOLN AVENUE

lakeview / chicago, il

## AREA RETAIL MAP





let's talk. **BIG IDEAS?**

**PAUL BRYANT**  
Mid-America Real Estate Corporation  
630.954.7354  
PBryant@MidAmericaGrp.com

**ADAM BELTZMAN**  
Mid-America Real Estate Corporation  
630.481.4036  
ABeltzman@MidAmericaGrp.com

 **MID-AMERICA® URBAN**

