

# Build to Suit!



## 122 E. Ridgewood Avenue Paramus, NJ

### Property Features

- 15,000 SF building
- 2,224 SF medical office space on ground level
- Ample parking
- New sign & monument sign rights available
- On main thoroughfare between the Garden State and Route 17. Around the corner from The Valley Hospital
- Available immediately

### Across From



### For more information:

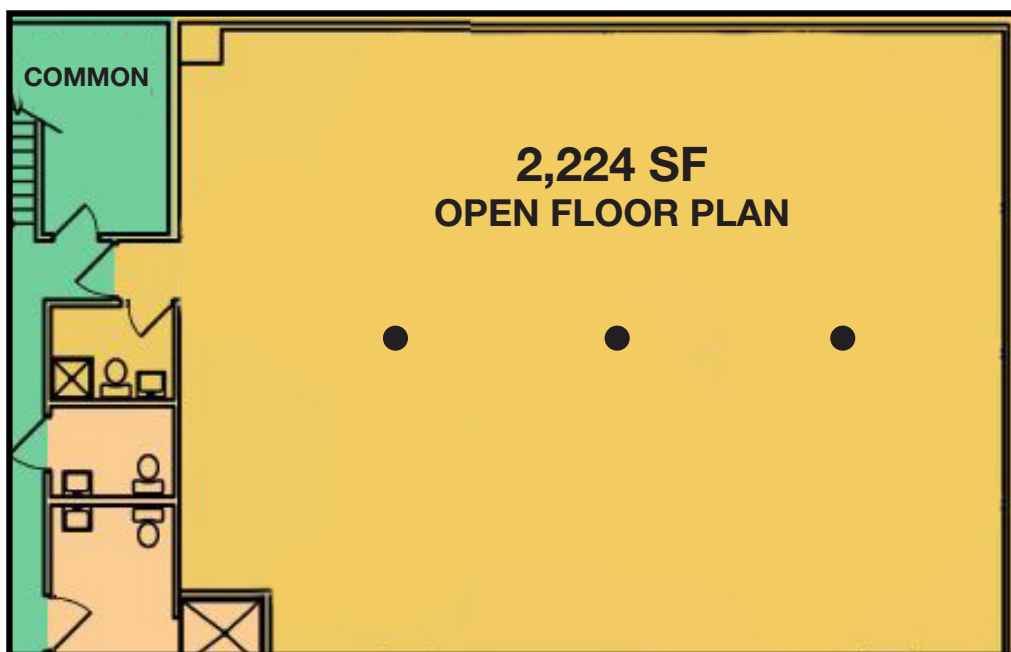
**Darren M. Lizzack, MSRE**  
Associate Vice President  
201 488 5800 x104  
dlizzack@naihanson.com

**Randy Horning, MSRE**  
Associate Vice President  
201 488 5800 x123  
rhorning@naihanson.com



# Newly Renovated Exterior & Floor Plan

122 E. Ridgewood Avenue  
Paramus, New Jersey



# Aerial & Highway Map

122 E. Ridgewood Avenue  
Paramus, New Jersey

